



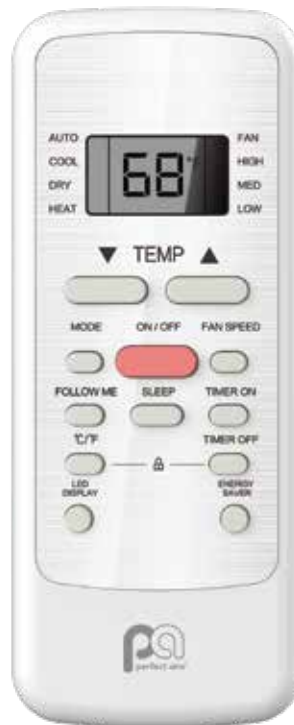
OWNER'S MANUAL

REMOTE CONTROL

WINDOW AIR CONDITIONER



Model RG51G(1)/CEFU1



Model RG51G(1)/EFU1

FOR WINDOW AC MODELS 4PNC6000, 4PNC8000, 4PNC10000, 4PNC12000, 3PNC18000, 3PASC10000, 5PAC5000, 5PAC6000, 5PAC8000, 6PAC10000, 6PAC12000, 5PAC15000, 5PAC18000, 5PAC25000, 3PACH8000, 3PACH12000, 3PACH18000, 3PACH25000, 1PAWFC8000, 1PAWFC10000, 1PAWFC12000, 1PAWFC14000

Supplier's Declaration of Conformity
47 CFR § 2.1077 Compliance Information

Unique Identifier: RG51G(1)/CEFU1

Responsible Party - U.S. Contact Information

Perfect Aire

5401 Dansher Rd.

Countryside, IL 60525

www.perfectaire.us

FCC Compliance Statement

This device complies with Part 15 of the FCC Rules. Operation is subject to the following two conditions: (1) This device may not cause harmful interference, and (2) this device must accept any interference received, including interference that may cause undesired operation.

IMPORTANT:

Thank you for your purchase. Please read this manual carefully before operating.
Make sure to save this manual for future reference.

TABLE OF CONTENTS

Remote Control Specifications 3

Handling the Remote Control 4

Remote Functions 6

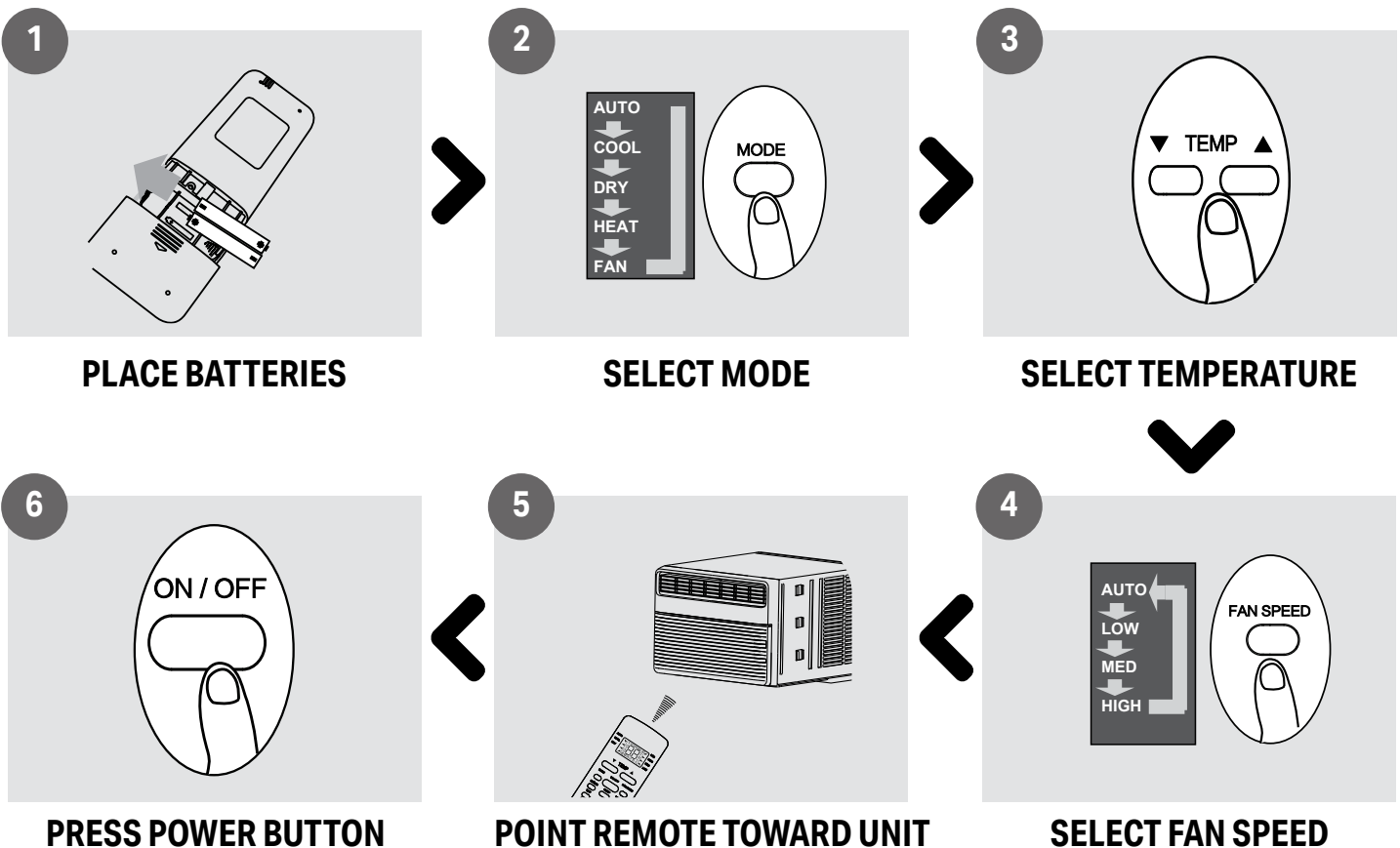
Remote Display Icons 7

Operating Instructions 8

REMOTE CONTROL SPECIFICATIONS

Model	RG51G(1)/EFU1/ RG51G(1)/CEFU1
Rated Voltage	3.0V (Dry Batteries R03/LR03×2)
Signal Receiving Range	26 Ft. (8 Metres)
Remote Operating Temperature	23°F-140°F (-5°C-60°C)

Quick Start Guide



! ATTENTION

Refer to **Operating Instructions** section of this manual for a detailed description of each setting.

NOTE

- Button designs on your unit may differ slightly from the example shown.
- If the indoor unit does not have a particular function, pressing that function's button on the remote control will have no effect.

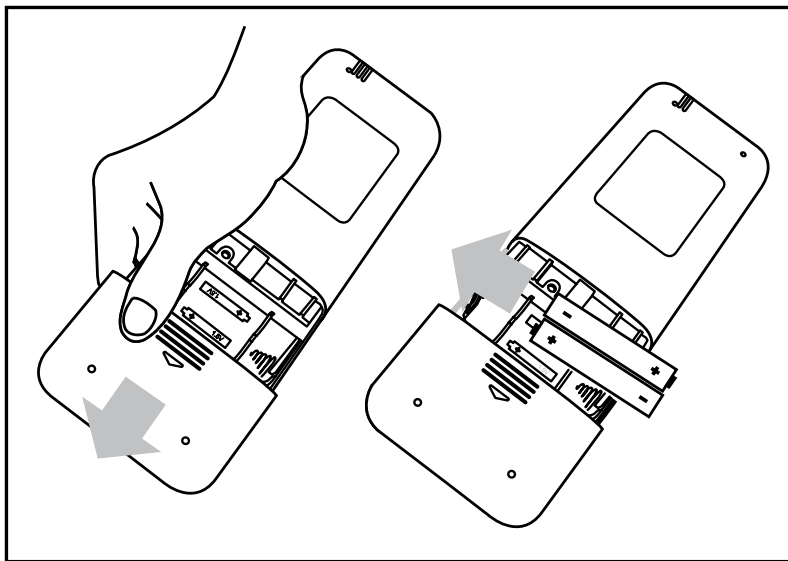
HANDLING THE REMOTE CONTROL

Inserting and Replacing Batteries

NOTE

- 2 AAA batteries are included.
- Remove batteries from packaging and place batteries into the remote.

1. To insert batteries, slide down back cover of the remote control to expose the battery compartment.
2. Insert batteries accordingly matching the (-) and (+) terminals of the battery.
3. Slide cover in the upward position to close battery compartment.



! ATTENTION

For optimum product performance:

- Do not mix old and new batteries, or batteries of different types.
- Do not leave batteries in the remote control if you don't plan on using the device for more than 2 months.

Battery Disposal

Do not dispose of batteries as unsorted municipal waste. Refer to local laws for proper disposal of batteries.

Tips

- The remote control must be within 26 ft (8m) of the unit.
- The unit will beep when remote signal is received.
- Curtains, direct sunlight, amongst other objects may interfere with the IR signal receiver, assure there are no objects between remote and unit.
- Remove batteries if the remote will not be used more than 2 months.



CAUTION

The device should comply with the local national regulations.

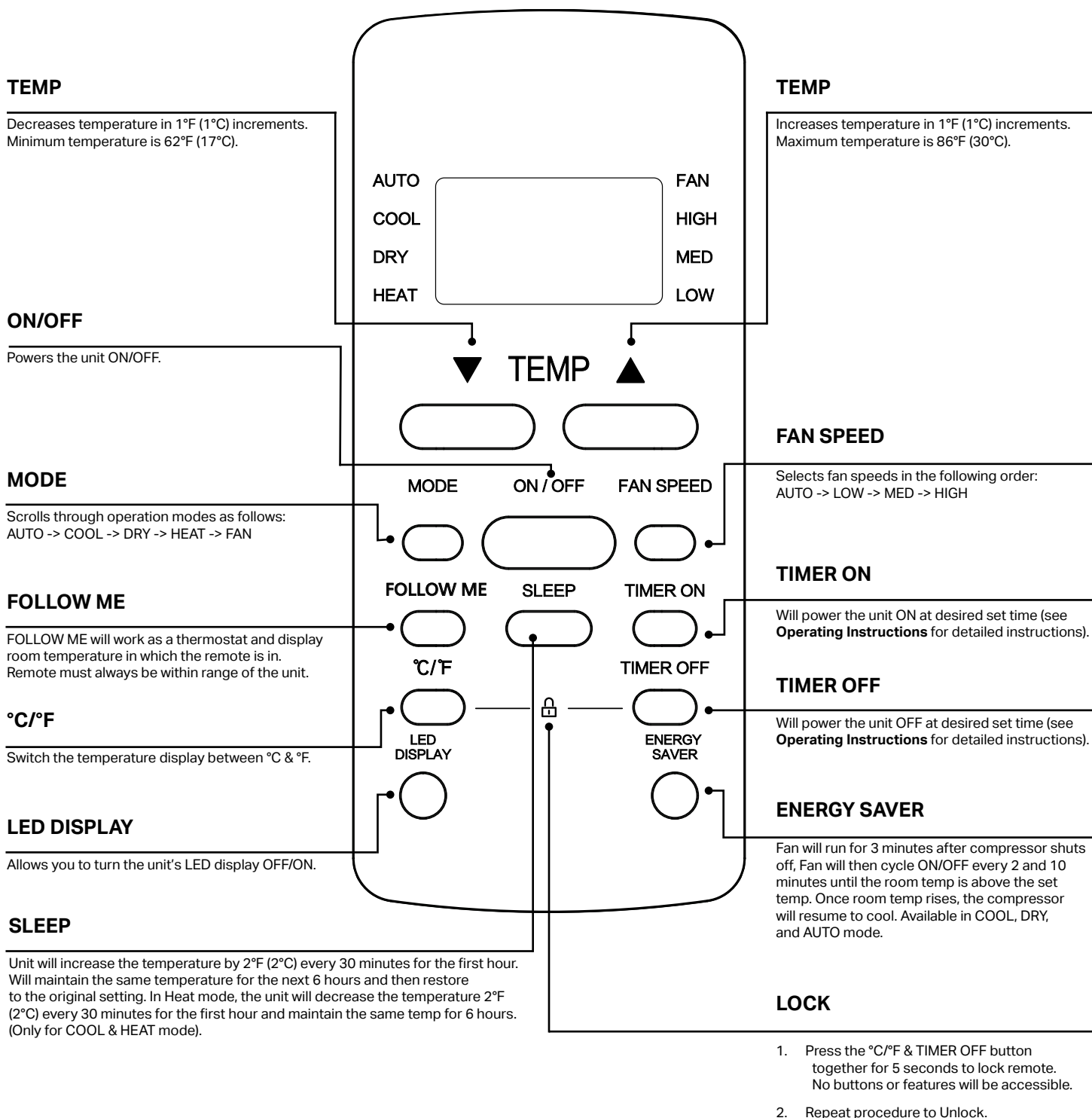
- In Canada, it should comply with CAN ICES-3(B) NMB-3(B).
- In USA, this device complies with part 15 of the FCC Rules. Operation is subject to the following two conditions:
 1. This device may not cause harmful interference, and
 2. This device may receive unwanted interference that may affect operation.

This equipment has been tested and found to comply with the limits for a Class B digital device, pursuant to part 15 of the FCC Rules. These limits are designed to provide reasonable protection against harmful interference in a residential installation. This equipment generates, uses and can radiate radio frequency energy and, if not installed and used in accordance with the instructions, may cause harmful interference to radio communications. However, there is no guarantee that interference will not occur in a particular installation. If this equipment does cause harmful interference to radio or television reception, which can be determined by turning the equipment off and on, the user is encouraged to try to correct the interference by one or more of the following measures:

- Reorient or relocate the receiving antenna. Increase the separation between the equipment and receiver.
- Connect the equipment into an outlet on a circuit different from that to which the receiver is connected.
- Consult the dealer or an experienced radio/TV technician for help.
- Changes or modifications not approved by the party responsible for compliance could void user's authority to operate the equipment.

REMOTE FUNCTIONS

Before you begin using your new air conditioner, make sure to familiarize yourself with its remote control. The following is a brief introduction to the remote control itself. For instructions on how to operate your air conditioner, refer to the **Operating Functions** section of this manual.



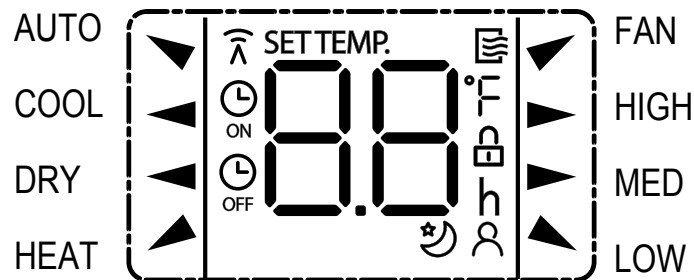
NOTE

- Model RG51G(1)/CEFU1 does not have a HEAT feature.

Model: RG51G(1)/CEFU1
RG51G(1)/EFU1

REMOTE DISPLAY ICONS

The following icons will appear upon powering the remote.



Mode Display

	AUTO
	COOL
	DRY
	HEAT
	FAN
	Displayed when signal is being transmitted
	Displayed when unit is turned ON
	Displayed when TIMER ON time is set
	Displayed when TIMER OFF time is set
	Will show set temperature, room temperature and TIMER ON/OFF desired time
	Displayed when the remote is locked
	Displayed when the FOLLOW ME feature is activated
	Displayed when SLEEP feature is activated

Fan Speed Indication

	HIGH - High speed
	MED - Medium speed
	LOW - Low speed
NO Arrow Displayed	Auto fan speed

NOTE

- All icons shown in the figure above are for visualization purposes only. During operation, only the selected icons will be displayed.

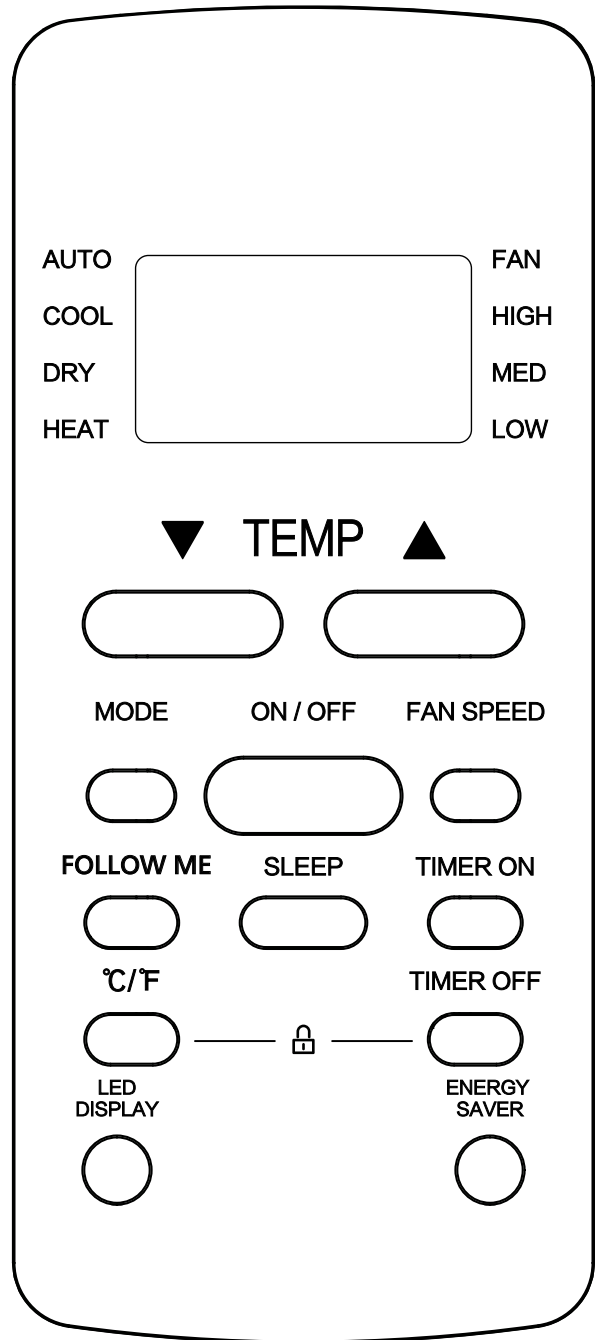
OPERATING INSTRUCTIONS

! ATTENTION

Before powering on, assure the unit is plugged in the correct outlet configuration.

COOL Mode

1. Press the **MODE** button to select **COOL** mode.
2. Set your desired temperature using the **TEMP ▲** or **TEMP ▼** button.
3. Press **FAN** button to select the fan speed: AUTO, LOW, MED or HIGH.
4. Press the **ON/OFF** button to start the unit.



Temperature Range

The operating temperature range for the unit is 62-86°F (17-30°C).

You can increase or decrease desirable temperature in 1°F (1°C) increments.

AUTO Mode

In AUTO mode, the unit will automatically select between COOL, FAN, DRY, and HEAT mode based on the room and set temperature.

1. Press the **MODE** button to select **AUTO** mode.
2. Set your desired temperature using the **TEMP ▲** or **TEMP ▼** button.
3. Press the **ON/OFF** button to start the unit.

NOTE

- **FAN SPEED** cannot be changed in **AUTO** mode.

FAN Mode

1. Press the **MODE** button to select **FAN** mode.
2. Press **FAN** button to select the fan speed: AUTO, LOW, MED or HIGH.
3. Press the **ON/OFF** button to start the unit.

NOTE

- When in FAN mode the set temperature cannot be changed. There will be no number displayed on the remote LCD screen.

DRY Mode (Dehumidifying)

1. Press the **MODE** button to select **DRY** mode.
2. Set your desired temperature using the **TEMP ▲** or **TEMP ▼** button.
3. Press the **ON/OFF** button to start the unit.

NOTE

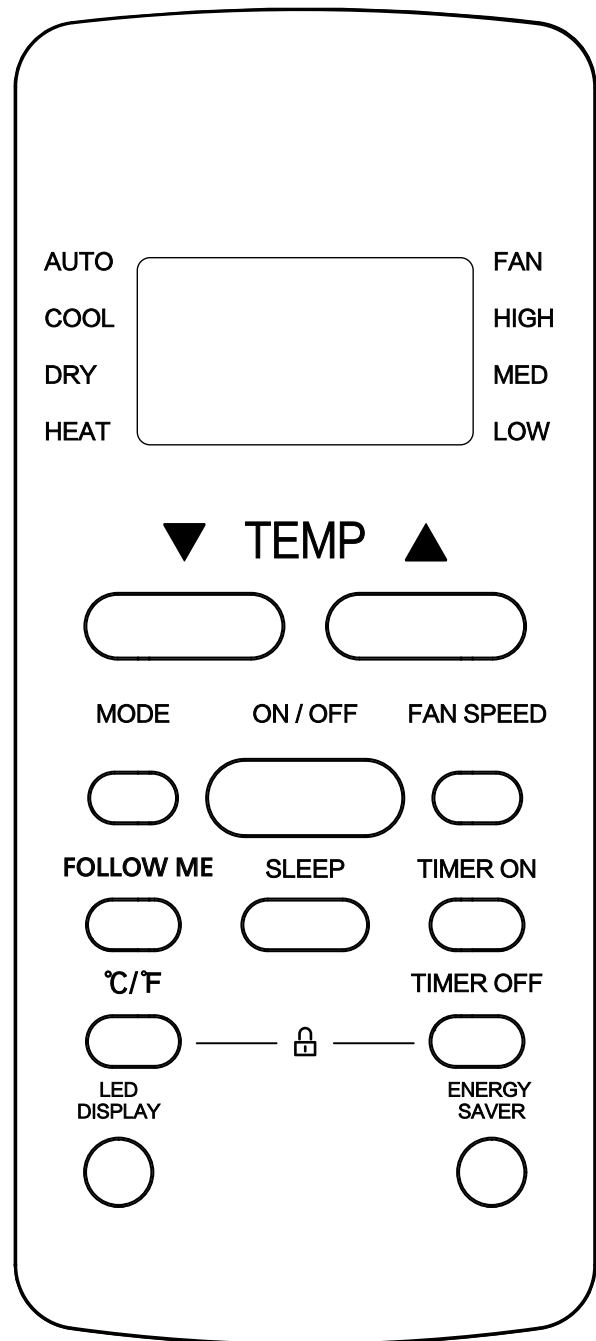
- **FAN SPEED** cannot be changed in **DRY** mode.

HEAT Mode (Select Models)

1. Press the **MODE** button to select **HEAT** mode.
2. Set your desired temperature using the **TEMP ▲** or **TEMP ▼** button.
3. Press **FAN** button to select the fan speed: AUTO, LOW, MED or HIGH.
4. Press the **ON/OFF** button to start the unit.

NOTE

- As outdoor temperature drops, the unit's heating efficiency will slowly decrease. In such instances, this unit should not to be used as a main source of heating.

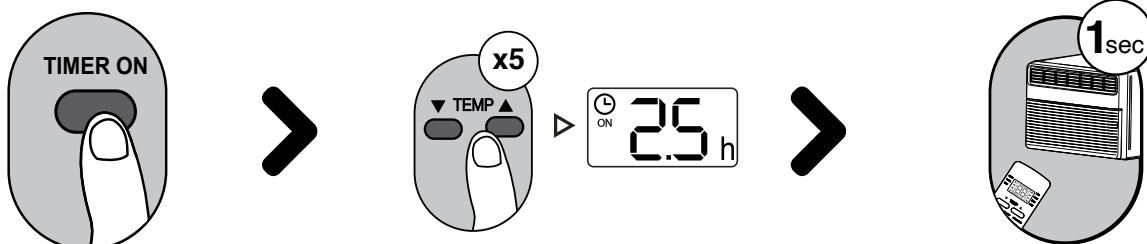


TIMER ON Setting

Press TIMER ON button to initiate the ON time sequence.

Use the TEMP UP and DOWN button to set desired time.

With the remote pointed at the unit, wait for 1 second until a beep is heard. This indicates the setting has been set.

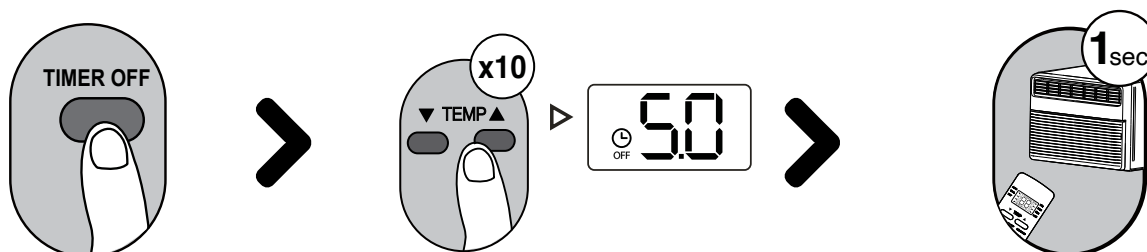


TIMER OFF Setting

Press TIMER OFF button to initiate the OFF time sequence.

Use the TEMP UP and DOWN button to set desired time.

With the remote pointed at the unit, wait for 1 second until a beep is heard. This indicates the setting has been set.

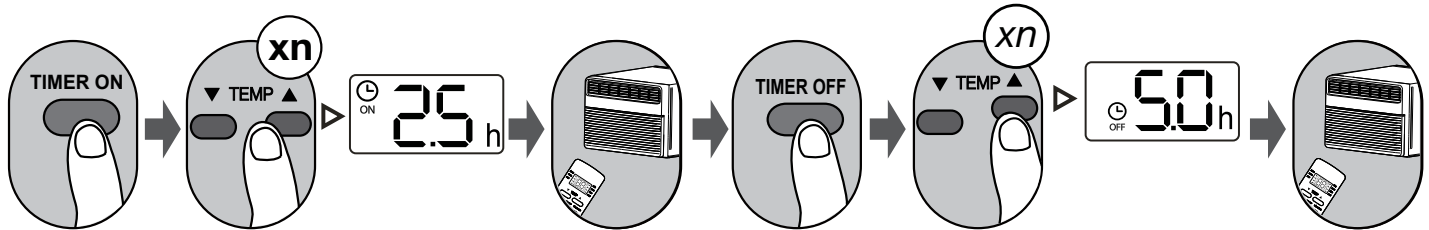


NOTE

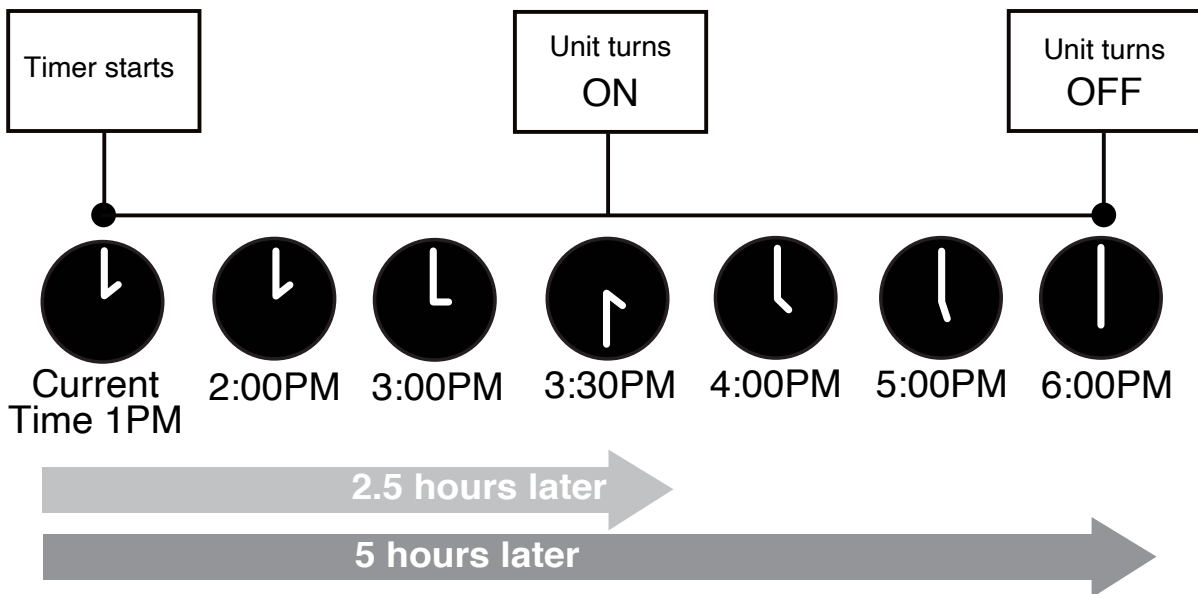
- The timer setting will allow you to set the unit with increments of 30 minutes up to 10 hours followed by hourly increments up to 24 hours for both the ON and OFF timer setting.
- To cancel the TIMER ON/OFF setting, while in the TIMER ON or OFF function use the DOWN or UP arrow to set the timer at 0.0 hours.

TIMER ON & OFF Setting (Example)

The Timer function can be programmed for both ON and OFF in current time as shown in the example below.



Ex. If current time is 1:00 PM and the TIMER ON is set to 2.5Hr, and TIMER OFF at 5.0Hrs, the unit will turn on at 3:30 PM and off at 6:00 PM.



The design and specifications are subject to change without prior notice for product improvement. Consult with the sales agency or manufacturer for details.

CR252-RG51G(1)
16117000002141
20200731



HOW-TO
VIDEO



REGISTER
YOUR PRODUCT



GET AN EXTENDED
WARRANTY



5401 Dansher Road
Countryside, IL 60525

844-4PA-AIRE | 844-472-2473 | support@perfectaire.us

CANADA SUPPORT 877-997-2473 | supportcanada@perfectaire.us

www.perfectaire.us