

LED LUMINAIRE PANELS INSTALLATION INSTRUCTIONS



Order Code	Description	Watts (W)	Volts (VAC)	Colour Temp. (K)	Operating Temp.	Size
63808	LED/PANEL/1X4/120-277V-DIM/40W/35K/STD	40	100-277	3500	- 20°C/ - 4°F to 50°C/122°F	1' (30.48 cm) x 4' (121.92 cm)
63752	LED/PANEL/1X4/120-277V-DIM/40W/40K/STD	40	100-277	4000	- 20°C/ - 4°F to 50°C/122°F	1' (30.48 cm) x 4' (121.92 cm)
63804	LED/PANEL/1X4/120-277V-DIM/40W/50K/STD	40	100-277	5000	- 20°C/ - 4°F to 50°C/122°F	1' (30.48 cm) x 4' (121.92 cm)
63809	LED/PANEL/2X2/120-277V-DIM/40W/35K/STD	40	100-277	3500	- 20°C/ - 4°F to 50°C/122°F	2' (60.96 cm) x 2' (60.96 cm)
63753	LED/PANEL/2X2/120-277V-DIM/40W/40K/STD	40	100-277	4000	- 20°C/ - 4°F to 50°C/122°F	2' (60.96 cm) x 2' (60.96 cm)
63805	LED/PANEL/2X2/120-277V-DIM/40W/50K/STD	40	100-277	5000	- 20°C/ - 4°F to 50°C/122°F	2' (60.96 cm) x 2' (60.96 cm)
63810	LED/PANEL/2X4/120-277V-DIM/50W/35K/STD	50	100-277	3500	- 20°C/ - 4°F to 50°C/122°F	2' (60.96 cm) x 4' (121.92 cm)
63754	LED/PANEL/2X4/120-277V-DIM/50W/40K/STD	50	100-277	4000	- 20°C/ - 4°F to 50°C/122°F	2' (60.96 cm) x 4' (121.92 cm)
63806	LED/PANEL/2X4/120-277V-DIM/50W/50K/STD	50	100-277	5000	- 20°C/ - 4°F to 50°C/122°F	2' (60.96 cm) x 4' (121.92 cm)
63811	LED/PANEL/2X2/347V-DIM/38W/35K/STD	38	347-480	3500	-40°C/ - 40°F to 70°C/158°F	2' (60.96 cm) x 2' (60.96 cm)
63755	LED/PANEL/2X2/347V-DIM/38W/40K/STD	38	347-480	4000	-40°C/ - 40°F to 70°C/158°F	2' (60.96 cm) x 2' (60.96 cm)
63807	LED/PANEL/2X2/347V-DIM/38W/50K/STD	38	347-480	5000	-40°C/ - 40°F to 70°C/158°F	2' (60.96 cm) x 2' (60.96 cm)

IMPORTANT - READ ALL INSTRUCTIONS BEFORE INSTALLATION

- Installation and maintenance must be performed by licensed electricians only.
- To avoid risk of electric shock, make sure to turn off main power switch prior to installation or maintenance.
- Must be installed in compliance with National Electrical Code (NEC) in the US or Canadian Electrical Code in Canada.
- Ensure input voltage and frequency is compatible with the fixture. Check product manual for power requirements prior to installation.

WARNING: Risk of Electric Shock. Suitable for damp and insulated locations

- Must be grounded
- Minimum 75 °C supply conductors
- Access above ceiling required
- Vapor barrier must be suitable for 75 °C
- Panels are normally set to work at extra low voltage below DC42V and constant current condition to ensure safety.
- Suitable for damp locations
- Designed for use in 100V-277V or 347V-480V,50-60Hz protected circuit. Apply class 2 supply.
- This product must be installed in accordance with the applicable installation code by a person familiar with the construction and operation of the product and the hazards involved.

ELECTRICAL COMPONENTS AND CHARACTERISTICS

- Integral, high efficiency driver and power supply
- Nominal Power Factor: 0.9
- Dimming: 0-10 V standard

INCLUDED IN THE BOX

- LED Panel
- Installation Instructions

1. Open J-Box (Figure 1)
2. Bend hang buckle by 90° positioning it vertical to the rear cover of panel (Figure 2A).
Bend top of hang buckles horizontally 90° (Figure 2 B).
3. Turn off power and remove ceiling panel
4. Place the panel into the ceiling and safeguard panel is stabilized on T-Bar (Figure 3).
5. Remove round knockout(s) from driver box and connect conduit to wiring box with proper connectors (s).
6. AC input line wire (black) connects to L. AC neutral wire (white) connects to N, the ground connect o the green wire (Figure 4)

Dimmer Connection:

This panel is compatible with 0-10V dimmers. Connect the driver: Use a cap connector to tie the dimmer purple wire to the driver purple wire. Use a second cap connector to tie the dimmer grey wire to the driver grey wire. (Figure 5). Incoming insulated dimming conductors shall have volatge rated at least equal to the branch voltage

7. Push all wires back into the junction box. Close junction box.

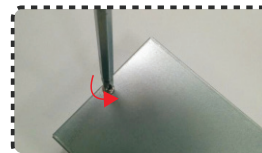


Figure1

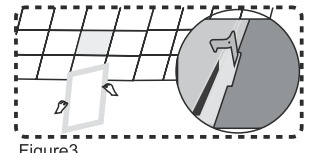


Figure3

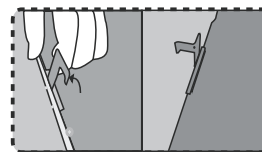


Figure2A

Figure2B

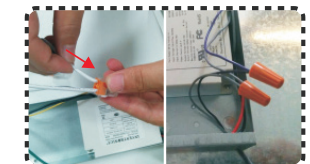


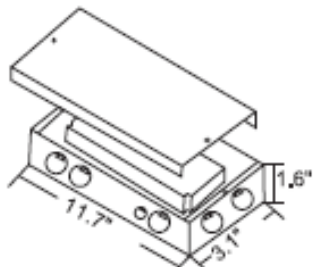
Figure4

Figure5

LED LUMINAIRE PANELS INSTALLATION INSTRUCTIONS



DRIVER DIMENSIONS

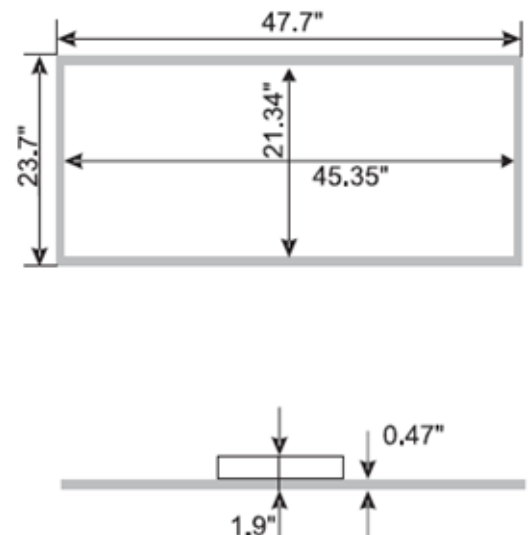
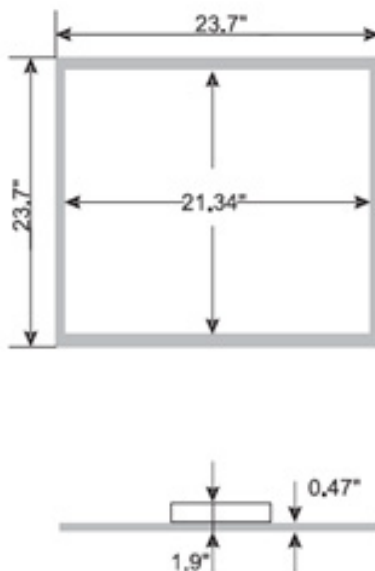
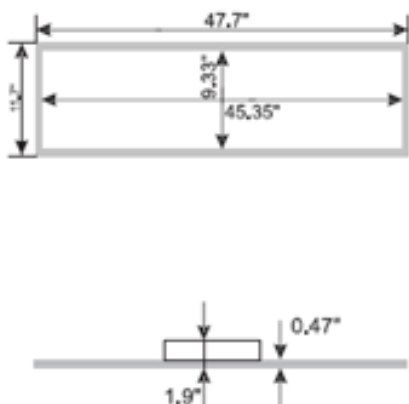


PANEL DIMENSIONS

63752
63808
63804

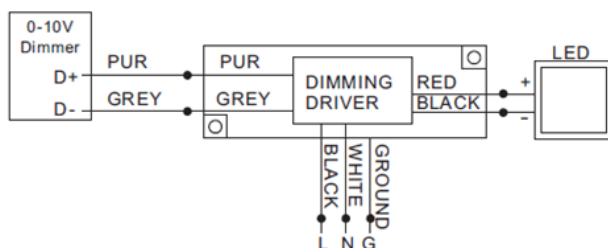
63753 63805
63755 63811
63809 63807

63754
63810
63806



WIRING DIAGRAM

Single luminaire



Multiple luminaires

