

BOH-L BOLLARD

The BOH-L is an LED bollard luminaire designed with high efficiency. The housing is made of die cast aluminum with a flush mounting base, polycarbonate lens, round top, and a powdercoat finish over a chromate conversion coating.

FEATURES AND SPECIFICATIONS

• Construction

Housing

This luminaire is constructed with aluminum die cast housing in bronze powder coating with anti-corrosive finish.

• Electrical

- The drivers allow input from 120-277 V and 347 V is reliable in the coldest of temperatures
- The BOH-L bollard is suitable for ambient temperature range of -40°C to +45°C. Available in 3 000, 4 000, 5 000 K color temperature with a lumen per watt ratio of 50 lm/W to 91 lm/W.

• Compliances

- Wet location
- IP65
- cETLus
- Meets requirements of ICES-005 for class B products

OVERVIEW

Light source	LED
Watts (W)	25, 35, 50
Lumen output (lm)	1 247 - 4 098
Efficiency (lm/W)	50 - 91
Color temperature (K)	3 000, 4 000, 5 000
CRI	70



QUICK SHIP AND TECHNICAL SPECIFICATION TABLE

Order code	Model number	Watts (W)	Volts (VAC)	Color temp. (K) ²	Lumen output (lm) ³	Efficiency (lm/W)	CRI	Finish	Dimming (Yes/No)	BUG	LED current (mA)	Power factor	THD (%)	Traditional equivalent (W) MH	HPS	Case qty (master)
65530	LBOL8/LOUV/25W/40K/120-277/RND/BZR/STD	25	120-277	4 000	1 355	53	70	Bronze	No	B1-U3-G1	430-230	0.9	20	60	70	1
65531	LBOL8/CONE/25W/40K/120-277/RND/BZR/STD	25	120-277	4 000	1 835	77	70	Bronze	No	B1-U3-G1	430-230	0.9	20	60	70	1

¹ **QUICK SHIP:** Product availability is subject to change without notice. Please contact your Stanpro customer service representative to confirm inventory levels at time of order.

² Typical color temperature range: +/- 5 %.

³ Lumen values are derived from photometric testing. Initial lumens range: +/- 10 %.

ORDERING GUIDE

BOH		L						/									
Series	Lamp type	Lumen package		Volts (V)		Color temp. (K)		Casting color		Style		Options					
BOH	L - LED	S1 -	Refer to the lumen chart table for details	W - 120-277 H - 347		30K - 3 000 40K - 4 000 50K - 5 000		BR - Bronze SP - Special color		C - Cone		T - Asymmetrical glareshield (180 degree) ¹					
		S2 -								L - Louver							
		S3 -	Refer to the lumen chart table for details														
		S1 -															
		S2 -															

¹ The finish is the same as the housing.

Note: The anchor bolt kits are not included with the fixture. Please order separately.

ACCESSORY (order separately)

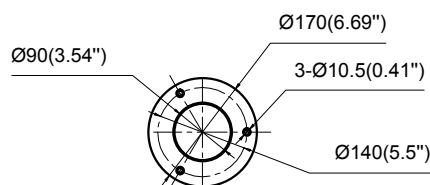
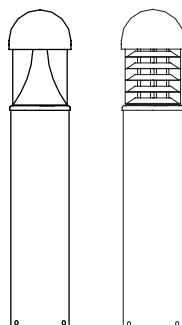
Order code	Description	Type
68462	ANCHOR BOLTS W/TRIANGLE KIT 8IN	Anchor bolt kit

TECHNICAL SPECIFICATION TABLE

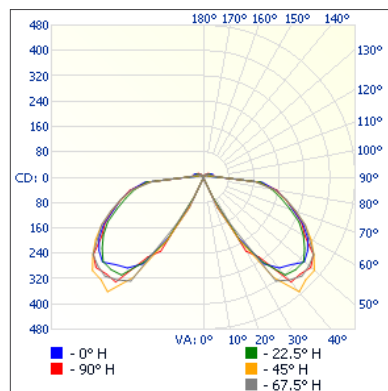
Lumen package	Style	Volts (V)	LED current (mA)	Watts (W)	3 000 K		4 000 K		5 000 K		CRI	Power factor	THD (%)	B.U.G.
					Lumens	lm/W	Lumens	lm/W	Lumens	lm/W				
S1	Louver	120-277	430 - 230	25	1 247	50	1 347	54	1 341	54	70	0.9	20	B1-U3-G1
		347	430 - 230	25	1 247	50	1 347	54	1 341	54	70	0.9	20	B1-U3-G1
	Cone	120-277	430 - 230	25	1 734	69	1 865	75	1 865	75	70	0.9	20	B1-U3-G1
		347	430 - 230	25	1 734	69	1 865	75	1 865	75	70	0.9	20	B1-U3-G1
S2	Louver	120-277	430 - 230	35	1 915	55	2 082	59	2 082	59	70	0.9	20	B1-U3-G1
		347	430 - 230	35	1 915	55	2 082	59	2 082	59	70	0.9	20	B1-U3-G1
	Cone	120-277	430 - 230	35	2 947	84	3 198	91	3 198	91	70	0.9	20	B1-U3-G1
		347	430 - 230	35	2 947	84	3 198	91	3 198	91	70	0.9	20	B1-U3-G1
S3	Cone	120-277	430 - 230	50	3 811	76	4 098	82	4 098	82	70	0.9	20	B1-U3-G1
		347	430 - 230	50	3 811	76	4 098	82	4 098	82	70	0.9	20	B1-U3-G1

DIMENSIONS

Length : 8.5" (215.5 mm)
Height : 42.4" (1 077 mm)
Width : 8.5" (215.5 mm)



Data is based upon tests performed in a controlled environment. Actual performance can vary depending on operating conditions.
All products are subject to change or may be discontinued any time without notice.

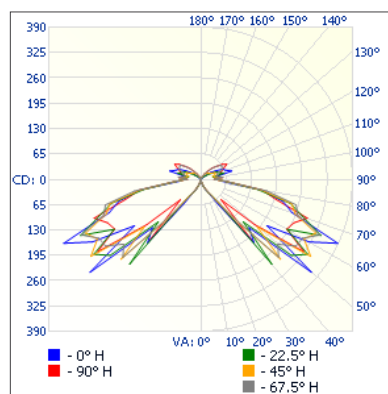
PHOTOMETRIC DATA¹
BOH-LS1-XX-40K-BR-C • 1 865 lm
Polar candela distribution

Zonal lumen summary

Zone	Lumens	% Fixture
0-30	49.9	2.7%
0-40	266.4	14.3%
0-60	967.2	51.8%
60-90	794.4	42.6%
70-100	492.3	26.4%
90-120	80.8	4.3%
0-90	1 761.6	94.4%
90-180	104.9	5.6%
0-180	1 866.6	100%

Illuminance at a distance

Center beam fc		Beam width	
17'	0	20.3'	25.1'
34'	0	40.6'	50.3'
51'	0	60.9'	75.4'
68'	0	81.2'	100.6'
85'	0	101.5'	125.7'
102'	0	121.8'	150.9'

■ Vert. spread: 61.7°
■ Horiz. spread: 73.0°

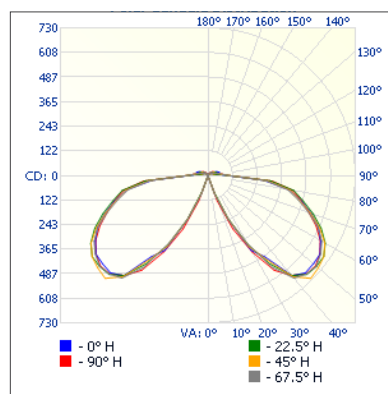
BOH-LS1-XX-40K-BR-L • 1 341 lm
Polar candela distribution

Zonal lumen summary

Zone	Lumens	% Fixture
0-30	16.0	1.2%
0-40	72.5	5.4%
0-60	503.6	37.5%
60-90	629.6	46.9%
70-100	374.3	27.9%
90-120	147.4	11%
0-90	1 133.1	84.4%
90-180	209.2	15.6%
0-180	1 342.3	100%

Illuminance at a distance

Center beam fc		Beam width	
17'	0	9.6'	64.1'
34'	0	19.2'	128.1'
51'	0	28.9'	192.2'
68'	0	38.5'	256.3'
85'	0	48.1'	320.3'
102'	0	57.7'	384.4'

■ Vert. spread: 31.6°
■ Horiz. spread: 124.1°

BOH-LS2-XX-40K-BR-C • 3 198 lm
Polar candela distribution

Zonal lumen summary

Zone	Lumens	% Fixture
0-30	130.0	4.1%
0-40	467.2	14.6%
0-60	1 613.2	50.4%
60-90	1 402.4	43.8%
70-100	879.7	27.5%
90-120	148.6	4.6%
0-90	3 015.6	94.2%
90-180	185.6	5.8%
0-180	3 201.3	100%

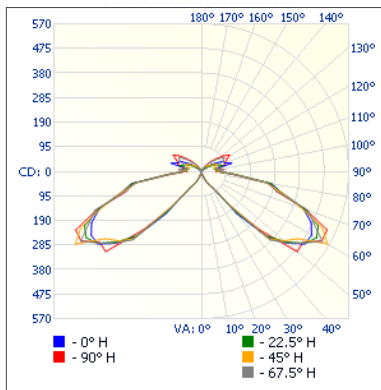
Illuminance at a distance

Center beam fc		Beam width	
17'	0	231.1'	222.2'
34'	0	462.1'	444.4'
51'	0	693.2'	666.5'
68'	0	924.2'	888.7'
85'	0	1 155.3'	1 110.9'
102'	0	1 386.4'	1 333.1'

■ Vert. spread: 163.3°
■ Horiz. spread: 162.6°

¹ Complete IES files available on our website.

Data is based upon tests performed in a controlled environment. Actual performance can vary depending on operating conditions. All products are subject to change or may be discontinued any time without notice.

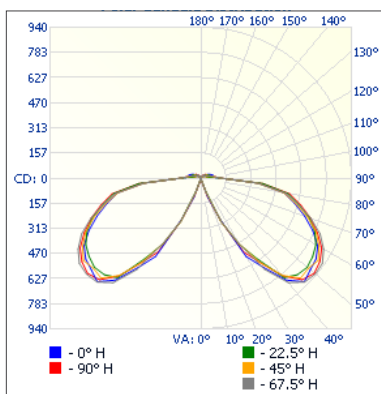
PHOTOMETRIC DATA¹
BOH-LS2-XX-40K-BR-L • 2 082 lm
Polar candela distribution

Zonal lumen summary

Zone	Lumens	% Fixture
0-30	23.5	1.1%
0-40	88.7	4.3%
0-60	782.3	37.5%
60-90	988.2	47.4%
70-100	576.2	27.7%
90-120	224.0	10.8%
0-90	1 770.5	85%
90-180	313.1	15%
0-180	2 083.7	100%

Illuminance at a distance

Center beam fc		Beam width	
17'	0	22.6'	106.9'
34'	0	45.1'	213.8'
51'	0	67.7'	320.6'
68'	0	90.2'	427.5'
85'	0	112.8'	534.4'
102'	0	135.3'	641.3'

■ Vert. spread: 67.1°
■ Horiz. spread: 144.7°

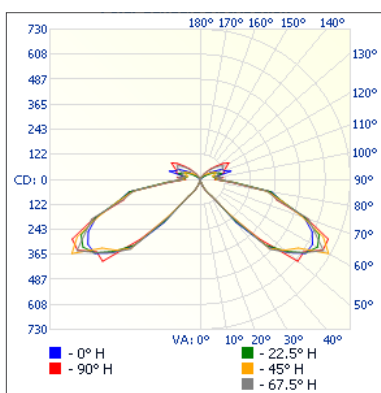
BOH-LS3-XX-40K-BR-C • 4 098 lm
Polar candela distribution

Zonal lumen summary

Zone	Lumens	% Fixture
0-30	152.8	3.7%
0-40	567.3	13.8%
0-60	2 035.0	49.6%
60-90	1 828.2	44.6%
70-100	1 139.3	27.8%
90-120	190.3	4.6%
0-90	3 863.2	94.2%
90-180	239.1	5.8%
0-180	4 102.3	100%

Illuminance at a distance

Center beam fc		Beam width	
17'	0	165.2'	21.7'
34'	0	330.5'	43.4'
51'	0	495.7'	65.1'
68'	0	661.0'	86.8'
85'	0	826.2'	108.5'
102'	0	991.5'	130.2'

■ Vert. spread: 156.7°
■ Horiz. spread: 65.1°

BOH-LS3-XX-40K-BR-L • 2 667 lm
Polar candela distribution

Zonal lumen summary

Zone	Lumens	% Fixture
0-30	30.1	1.1%
0-40	113.6	4.3%
0-60	1 002.2	37.5%
60-90	1 265.9	47.4%
70-100	738.1	27.7%
90-120	287.0	10.8%
0-90	2 268.0	85%
90-180	401.1	15%
0-180	2 669.2	100%

Illuminance at a distance

Center beam fc		Beam width	
17'	0	22.6'	106.9'
34'	0	45.1'	213.8'
51'	0	67.7'	320.6'
68'	0	90.2'	427.5'
85'	0	112.8'	534.4'
102'	0	135.3'	641.3'

■ Vert. spread: 67.1°
■ Horiz. spread: 144.7°

¹ Complete IES files available on our website.

Data is based upon tests performed in a controlled environment. Actual performance can vary depending on operating conditions. All products are subject to change or may be discontinued any time without notice.