

# LOLAND

## 21¼" SQUARE DROP-IN SINK

□ 4410BST	Single Hole
□ 4440BST	4" Center
□ 4480BST	8" Center

### PRODUCT SPECS

- Fine fireclay
- Front overflow hole
- Single hole, 4" or 8" faucet center
- Template supplied
- Faucet not included

### DIMENSIONS

540mm W x 460mm D x 180mm H

21¼" W x 18½" D x 7⅞" H

### COMPLIANCE CERTIFICATIONS

Meets or exceeds the following:

- IAPMO cUPC
- ASME A112.19.2 / CSA B45.1-2013
- ANSI A117.1 ADA Standard
- NBC and OBC Section 3.8 Barrier Free design and CSA B651 Standard

### SHIPPING

Cube 1.97

GW 21 lbs



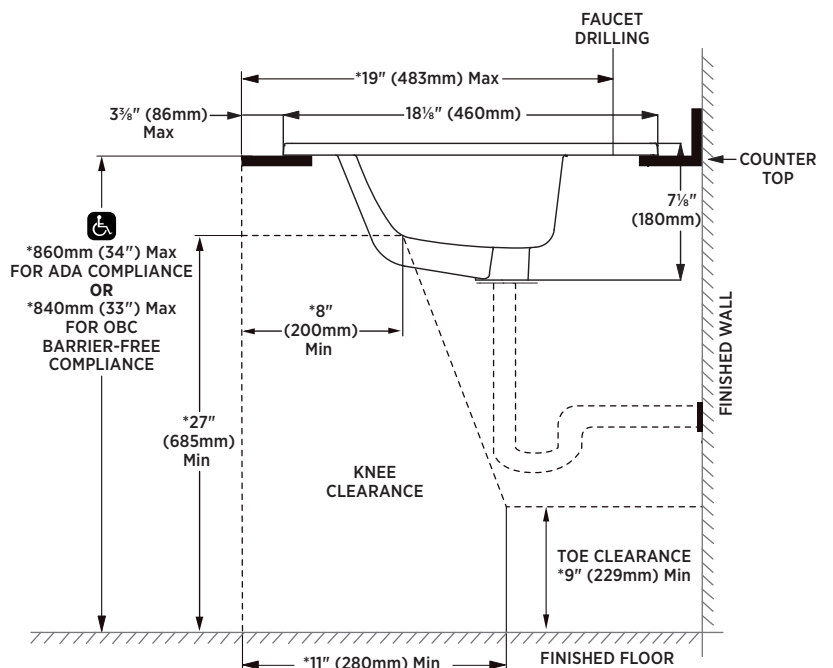
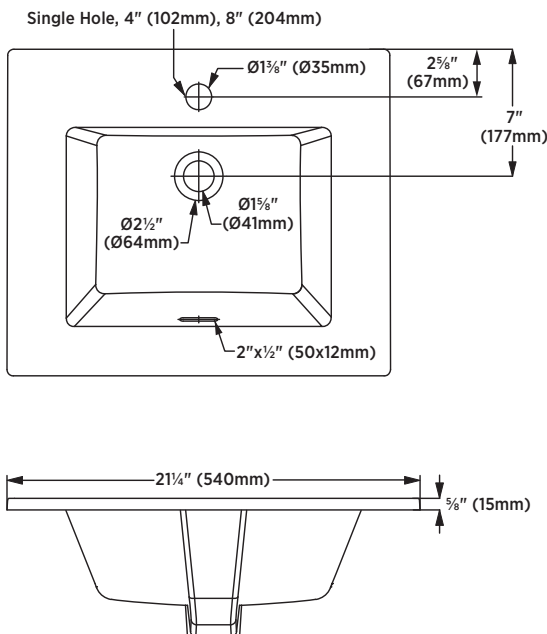
### TO BE SPECIFIED

Colour:

- Soft White

**NOTES:** Dimensions of fixtures are nominal and may vary within the range of tolerances established by ASME standard A112.19.2. These measurements are subject to change or cancellation. No responsibility is assumed for use of superseded or voided pages.

Products are designed to comply ADA/ANSI A117.1 Standard and OBC barrier-free requirements. It shall be the responsibility of the installer to comply with the local disability codes and standards prior to installing the product.



▲ NOTE: Starred measurements comply with ADA and OBC barrier free accessibility requirements.

**contrac**

CANADA  
USA

5970 CHEDWORTH WAY, UNIT B, MISSISSAUGA, ONTARIO, CANADA L5R 4G5 | CONTRAC.CA  
6241 NORTHWIND PARKWAY, HOBART, INDIANA, USA 46342 | CONTRAC.US

REVISED JUNE 2018