

## For Commercial and Industrial Applications

Job Name \_\_\_\_\_  
 Job Location \_\_\_\_\_  
 Engineer \_\_\_\_\_  
 Approval \_\_\_\_\_

Contractor \_\_\_\_\_  
 Approval \_\_\_\_\_  
 Contractor's P.O. No. \_\_\_\_\_  
 Representative \_\_\_\_\_

# Series HY42 Non-Freeze Wall Hydrants with Backflow Preventer

**For Wall Thickness: 2 1/2" - 18" (65 - 450mm)**

Series HY42 is an automatic draining, freezeless wall hydrant with vacuum breaker-backflow preventer protection to prevent backsiphonage. It is designed to blend with modern architecture for installation on restaurants, schools, office buildings, churches, apartments, motels, stores, shopping centers and industrial buildings.

## Features

- Threaded inlet connection 3/4" (20mm) female or 1" (25mm) male I.P.S.
- Tamper resistant Tee key operates hydrant.
- Permanent type brass valve body
- Replaceable EPDM seat surface
- One piece valve plunger which accurately controls both the flow and drainage with a minimum number of turns.
- Casing consists of rugged brass pipe.
- Exterior finish of chrome-plated brass.

## Standards

ASSE Standard 1019

## Pressure

Maximum Operating Pressure: 125psi (8.6 bar)

## Approvals

ASSE



Canadian Standards Association

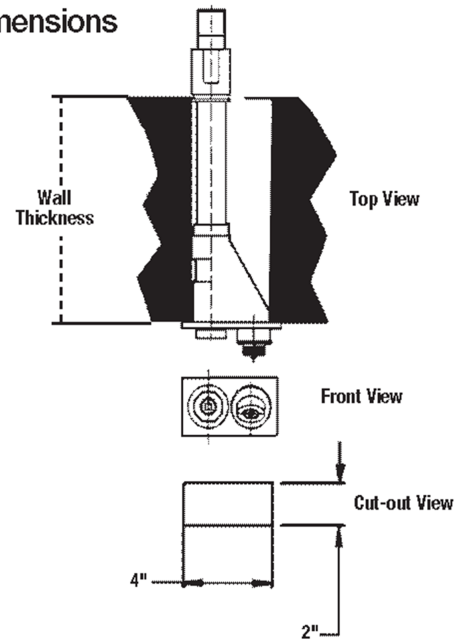
Listed by IAPMO

## Specifications

Wall hydrant shall be exposed-type Watts automatic draining Series HY42 with vacuum breaker-backflow preventer protection, 3/4" (20mm) hose thread nozzle, one piece valve plunger to control both flow and drain functions, rugged brass pipe construction, chrome-plated brass finish. Loose Tee key to be furnished with each hydrant. Complies with ASSE 1019.



## Rough-in Dimensions



## Dimensions – Weights

MODEL	WALL THICKNESS		WEIGHT	
	in	mm	lbs.	kgs.
HY42-025	2 1/2	64	3.5	1.6
HY42-04	4	100	4.5	2.0
HY42-06	6	150	4.9	2.2
HY42-08	8	200	5.3	2.4
HY42-10	10	250	5.7	2.6
HY42-12	12	305	6.1	2.8
HY42-14	14	356	6.5	2.9
HY42-16	16	406	6.9	3.1
HY42-18	18	457	7.3	3.3

Watts product specifications in U.S. customary units and metric are approximate and are provided for reference only. For precise measurements, please contact Watts Technical Service. Watts reserves the right to change or modify product design, construction, specifications, or materials without prior notice and without incurring any obligation to make such changes and modifications on Watts products previously or subsequently sold.

**WATTS®**

# Series HY42 (with Box)

## Non-Freeze Wall Hydrants with Backflow Preventer and Mounting Box

For Wall Thickness: 2½" - 18" (65 - 450mm)

Series HY42 is an automatic draining, freezeless wall hydrant with vacuum breaker-backflow preventer protection to prevent backsiphonage enclosed in a flush mounting wall box. It is designed to blend with modern architecture for installation on restaurants, schools, office buildings, churches, apartments, motels, stores, shopping centers and industrial buildings.

### Features

- Threaded inlet connection ¾" (20mm) female or 1" (25mm) male I.P.S.
- Tamper resistant Tee key operates hydrant
- Permanent type brass valve body
- Replaceable EPDM seat surface
- One piece valve plunger which accurately controls both the flow and drainage with a minimum number of turns
- Casing consists of rugged brass pipe
- Exterior finish of chrome on brass
- Box door hinges in the up position, locks in the open position allowing hose free access to either side
- Exterior finish on box and door of chrome-plated brass

### Standards

ASSE Standard 1019

### Pressure

Maximum Operating Pressure: 125psi (8.6 bar)

### Approvals

ASSE

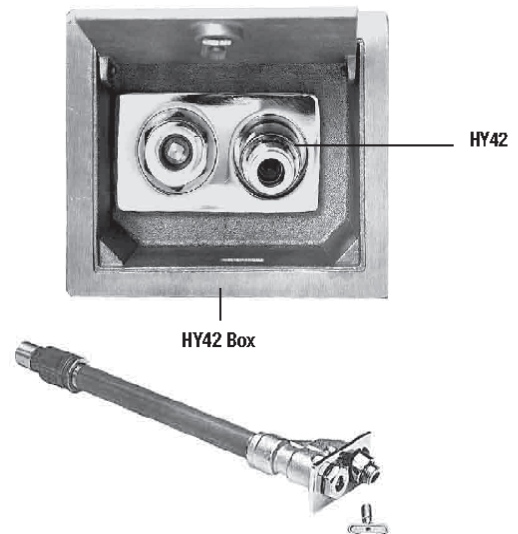


Listed by IAPMO

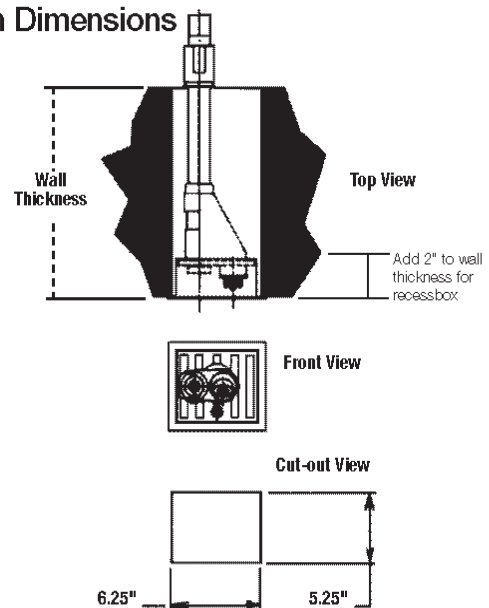
### Specifications

Wall hydrant shall be exposed-type Watts automatic draining Series HY42 with vacuum breaker-backflow preventer protection, ¾" (20mm) hose thread nozzle, one piece valve plunger to control both flow and drain functions, rugged brass pipe construction, locking chrome-plated brass box and hydrant. Mounting box locks in the up position allowing hose access to either side. Loose Tee key to be furnished with each hydrant. Complies with ASSE 1019.

Series HY42  
Front View with Box



### Rough-in Dimensions



MODEL	WALL THICKNESS		WEIGHT	
	in	mm	lbs.	kgs.
HY42-025	2½	64	3.5	1.6
HY42-04	4	102	4.5	2.0
HY42-06	6	152	4.9	2.2
HY42-08	8	203	5.3	2.4
HY42-10	10	254	5.7	2.6
HY42-12	12	305	6.1	2.8
HY42-14	14	356	6.5	2.9
HY42-16	16	406	6.9	3.1
HY42-18	18	457	7.3	3.3
HY42 Box			5.0	2.3
HY42 Tee-Key			1.0	0.5
HY42 Wall Clamp			2.0	0.9



A Watts Water Technologies Company



ISO 9001-2008  
CERTIFIED

USA: 815 Chestnut St., No. Andover, MA 01845-6098; [www.watts.com](http://www.watts.com)

Canada: 5435 North Service Rd., Burlington, ONT. L7L 5H7; [www.wattscanada.ca](http://www.wattscanada.ca)