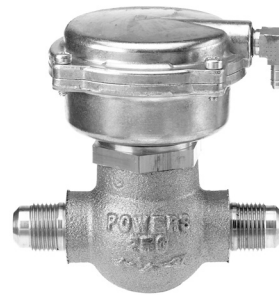


## Two-Way Valves

*1/2" Flared Type  
Normally Open or Normally Closed*



656 Powermite  
Two-Way Normally Open Valve.



656 Powermite  
Two-Way Normally Closed Valve.

### Description

Designed to control the flow of both water and steam, the Powermite 656 Series Powermite Two-way Valves are available with normally open or normally closed action.

### Features

- Modified equal percentage throttling characteristics
- Replaceable disc for tight shutoff
- Dual sealing feature for the valve stem
- Disassembly of the valve top, inspection, and upper packing replacement without system shutdown or valve body removal
- Actuator can be rotated to facilitate piping control air from different directions

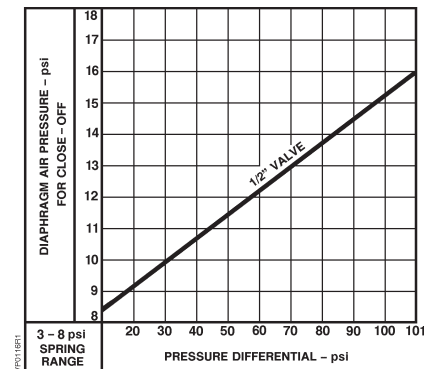
### Applications

The Powermite 656 Series Valves are recommended for use with hot or chilled water and steam for control of convectors, fan coil units, radiation, reheat coils, and similar terminal unit applications. The dual sealing packed design is excellent for applications for higher-pressure systems encountered in high rise buildings. The compact size is excellent for use when space is limited.

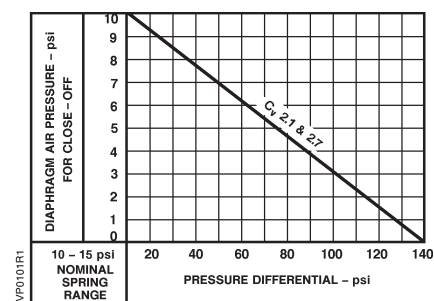
A-235

Valves

### Nominal Close-off Ratings



Normally Open.



Normally Closed.

# 656 Powermite Two-Way Specifications

|   |   |
|---|---|
| Valve Size .....  | 1/2" (15 mm)  |
| Valve Body Style .....  | Flared End  |
| Valve Action .....  | NO (Direct Action)/NC(Direct Action)                            |
| Stem Travel .....   | 1/4" (6 mm)   |
| Valve Body Rating .....   | ANSI Class 250  |
| <b>Actuator Standard Spring Ranges with 10 psi (69 kPa) <math>\Delta P</math></b> |   |
| Differential Pressure .....   | 10 to 15 psi (69 to 103 kPa) NC<br>3 to 8 psi (21 to 55 kPa) NO |
| Nominal Spring Span .....   | 5 psi (35 kPa)  |

|   |  |
|---|--|
| Effective Diaphragm Area .....                              | 3.4 in. <sup>2</sup> (22 cm <sup>2</sup> ) |
| Max. Diaphragm Pressure .....                               | 30 psi (207 kPa)                           |
| Air Connection .....  | 1/8" NPT                                   |
| Controlled Medium .....                                     | Water, Steam, Glycol Solution              |
| Maximum Medium Temperature .....                            | 250° F (121° C)                            |
| <b>Maximum Inlet Pressures</b>                              |  |
| Water.....  | Refer to Reference Section                 |
| Steam.....  | 15 psi (103 kPa)                           |
| <b>Maximum Differential Pressure for Modulating Service</b> |  |
| Water.....  | 20 psi (138 kPa)                           |
| Steam.....  | 15 psi (103 kPa)                           |

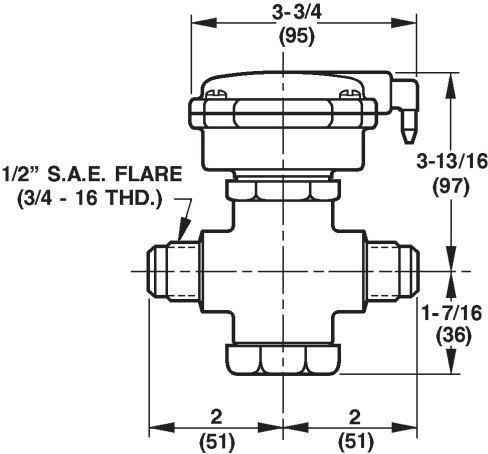
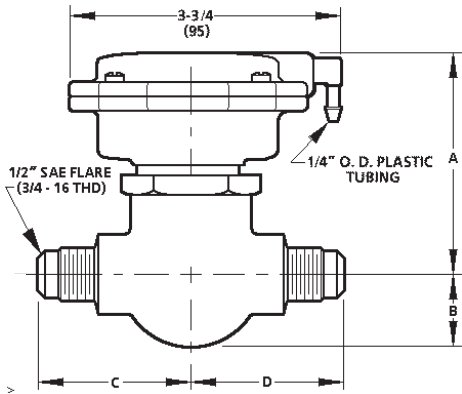
## 656 Powermite Two-Way Product Ordering

| Valve Size             | Cv  | Close-offs        | Spring Range                 | Part No.        |
|------------------------|-----|-------------------|------------------------------|-----------------|
| <b>Normally Open</b>   |     |                   |                              |                 |
| 1/2" (15 mm)           | 0.9 | 95 psi (655 kPa)  | 3 to 8 psi (21 to 55 kPa)    | <b>656-0004</b> |
| 1/2" (15 mm)           | 2.1 | 95 psi (655 kPa)  | 3 to 8 psi (21 to 55 kPa)    | <b>656-0002</b> |
| <b>Normally Closed</b> |     |                   |                              |                 |
| 1/2" (15 mm)           | 2.1 | 140 psi (965 kPa) | 10 to 15 psi (69 to 103 kPa) | <b>656-0012</b> |

A-236

## Dimensions and Weights

Valves



Dimensions shown in inches (mm).

| Valve Size | Valve Action    | Dimensions       |                 |            |            | Weight          |
|------------|-----------------|------------------|-----------------|------------|------------|-----------------|
|            |                 | A                | B               | C          | D          |                 |
| 1/2"       | Normally Open   | 3-3/16" (81 mm)  | 1" (25 mm)      | 2" (51 mm) | 2" (51 mm) | 2.2 lb.(1.0 kg) |
| 1/2"       | Normally Closed | 3-13/16" (97 mm) | 1-7/16" (36 mm) | 2" (51 mm) | 2" (51 mm) | 2.2 lb.(1.0 kg) |

Accessories & Service Kits

A-257