

Take Control[®] **ion** Technologies



Full Product Catalog

Pumps Controllers Packages Systems Accessories



37 Forestwood Dr., Romeoville, IL 60446 www.ionproducts.net [815] 886-9200

Table of Contents

Sump Pumps

Effluent Pumps

Sewage Ejector Pumps

High Head Sewage Ejector Pumps

High Flow Sewage Ejector Pumps

Special Application Pumps

Ion+ Sump Pumps

Ion+ Sewage Ejector Pumps

Controllers

Ion Endeavor Pump Packages

Battery Backup Systems

Accessories

Basin Packages

004

016

020

030

034

036

040

048

052

060

064

090

094



WC33i

Sump Pump

- Basement Sump
- Septic Tank Effluent
- Dewatering



37 Forestwood Dr., Romeoville, IL 60446 www.ionproducts.net (815) 886-9200

Patent No. 8,591,198

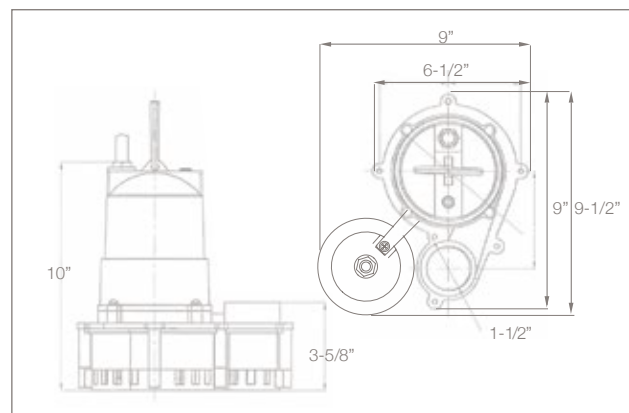
WC33i

Sump Pump

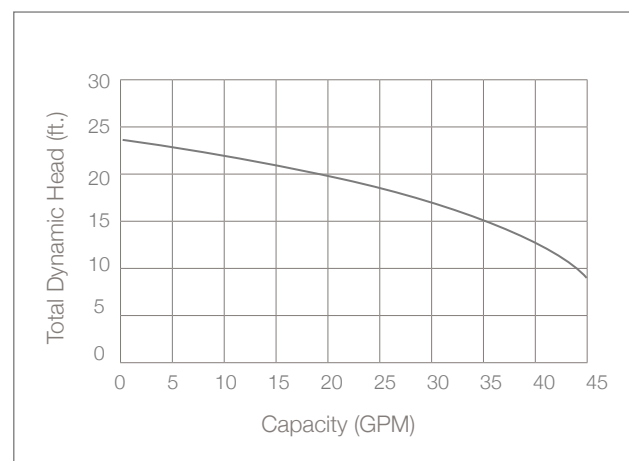
System Specifications

Typical Applications	<ul style="list-style-type: none"> • Basement sump • Dewatering • Septic tank effluent
Maximum Capacity	Up to 45 GPM
Maximum Head	Up to 24'
Electrical Data	115 V, 1 Ø, 4 FLA, 60 Hz
Motor Data	1/3 HP, 3450 RPM
Recommended Minimum Basin Size	18" x 24"
Automatic Operation	i: Ion Digital Level Control (standard)
Manual Operation	V: Vertical M: Manual
Materials of Construction	Cast iron & engineered thermoplastic
Power Cord	10' Standard
Discharge	1 1/2" NPT
Solids	1/2"

Pump Dimensions



Pump Performance



Features

- Carbon ceramic mechanical seal
- Oil-filled high efficiency PSC motor that uses half the AC power of most 1/3 HP pumps
- Piggyback Ion® digital level control switch has no moving parts (standard)
- Size allows 2 pumps in 18" basin
- 3 year warranty



SH30i

Sump Pump

- Basement Sump
- Septic Tank Effluent
- Dewatering



37 Forestwood Dr., Romeoville, IL 60446 www.ionproducts.net (815) 886-9200

Patent No. 8,591,198

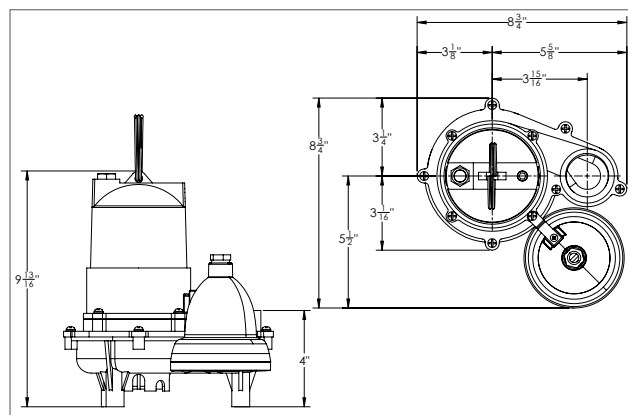
SH30i

Sump Pump

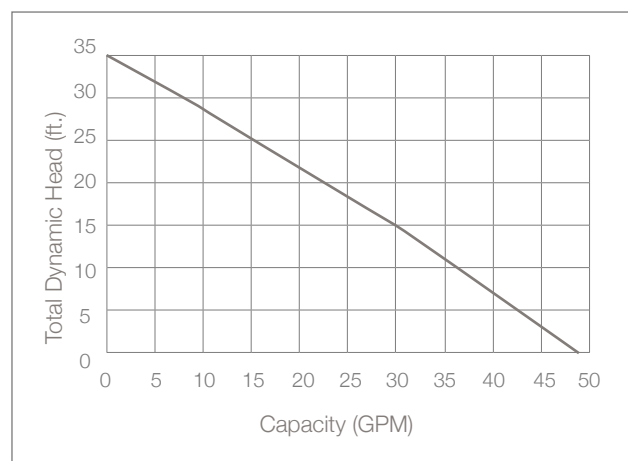
System Specifications

Typical Applications	<ul style="list-style-type: none"> Basement sump Dewatering Septic tank effluent
Maximum Capacity	Up to 47 GPM
Maximum Head	Up to 35'
Electrical Data	115 V, 1 Ø, 7.0 FLA, 60 Hz
Motor Data	3/10 HP, 3450 RPM
Recommended Minimum Basin Size	18" x 24"
Automatic Operation	i: Ion Digital Level Control (standard) W: Wide angle float V: Vertical float
Manual Operation	M: Manual
Materials of Construction	Cast iron
Impeller	Cast iron vortex
Power Cord	10' Standard
Discharge Size	1½" NPT
Solids Handling	¾"

Pump Dimensions



Pump Performance



Features

- Carbon ceramic mechanical seal
- Oil-filled motor with automatic reset thermal overload
- Uses single-row ball bearing construction
- Piggy back Ion® digital level control switch has no moving parts (standard)
- 3 year warranty



SH50i

Sump Pump

- Basement Sump
- Septic Tank Effluent
- Dewatering



37 Forestwood Dr., Romeoville, IL 60446 www.ionproducts.net (815) 886-9200

Patent No. 8,591,198

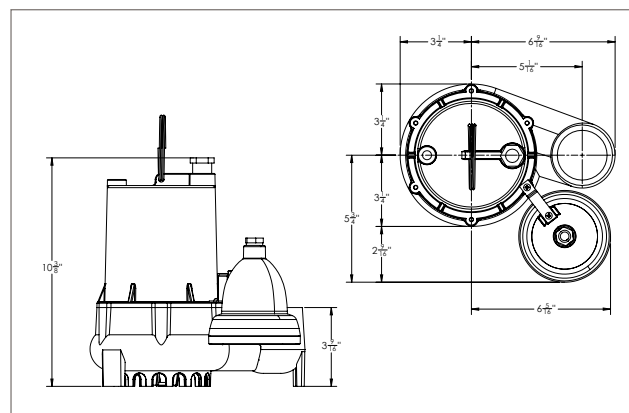
SH50i

Sump Pump

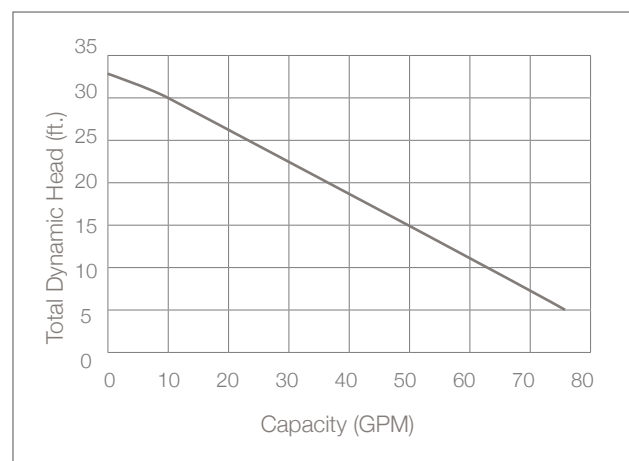
System Specifications

Typical Applications	<ul style="list-style-type: none"> Basement sump Dewatering Septic tank effluent
Maximum Capacity	Up to 74 GPM
Maximum Head	Up to 33'
Electrical Data	115 V, 1 Ø, 8.5 FLA, 60 Hz
Motor Data	1/2 HP, 3450 RPM
Recommended Minimum Basin Size	18" x 24"
Automatic Operation	i: Ion Digital Level Control (standard) W: Wide angle float V: Vertical float
Manual Operation	M: Manual
Materials of Construction	Cast iron
Impeller	Non-clog vortex
Power Cord	20' Standard
Discharge Size	2" NPT
Solids Handling	3/4"

Pump Dimensions



Pump Performance



Features

- Carbon ceramic mechanical seal
- Oil-filled motor with automatic reset thermal overload
- Uses single-row ball bearing construction
- Piggy back Ion® digital level control switch has no moving parts (standard)
- 3 year warranty



BA33i

Sump Pump

- Basement Sump
- Dewatering



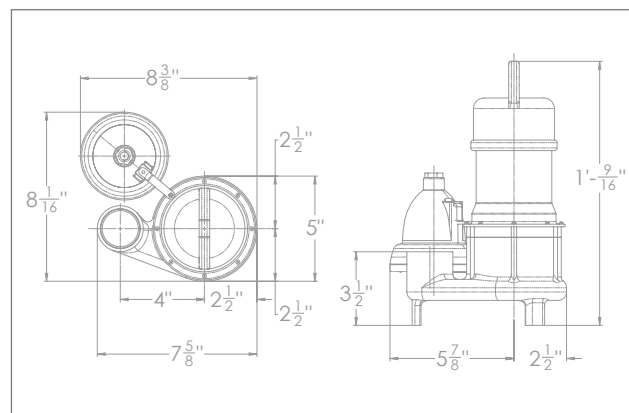
37 Forestwood Dr., Romeoville, IL 60446 www.ionproducts.net (815) 886-9200

Patent No. 8,591,198

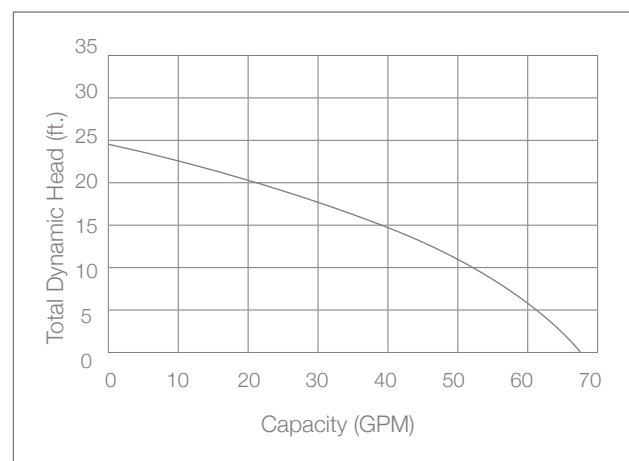
System Specifications

Typical Applications	<ul style="list-style-type: none"> Basement sump Dewatering
Maximum Capacity	Up to 68 GPM
Maximum Head	Up to 25'
Electrical Data	115 V, 1 Ø, 4.5 FLA, 60 Hz
Motor Data	1/3 HP, 3450 RPM
Recommended Minimum Basin Size	18" x 24"
Automatic Operation	i: Ion Digital Level Control (standard) SPL: Vertical float
Manual Operation	M: Manual
Materials of Construction	Cast iron & stainless steel
Impeller	Thermoplastic vortex
Power Cord	10' Standard
Discharge Size	1½" NPT
Solids Handling	½"

Pump Dimensions



Pump Performance



Features

- Energy efficient motor
- Carbon ceramic mechanical seal
- Thermal overload protection
- Piggy back Ion® digital level control switch has no moving parts (standard)
- Stainless steel screen prevents debris from entering the pump
- 3 year warranty



BA50i

Sump Pump

- Basement Sump
- Dewatering



37 Forestwood Dr., Romeoville, IL 60446 www.ionproducts.net (815) 886-9200

Patent No. 8,591,198

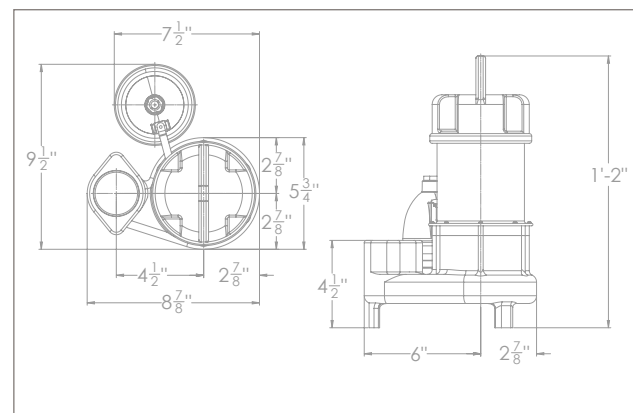
BA50i

Sump Pump

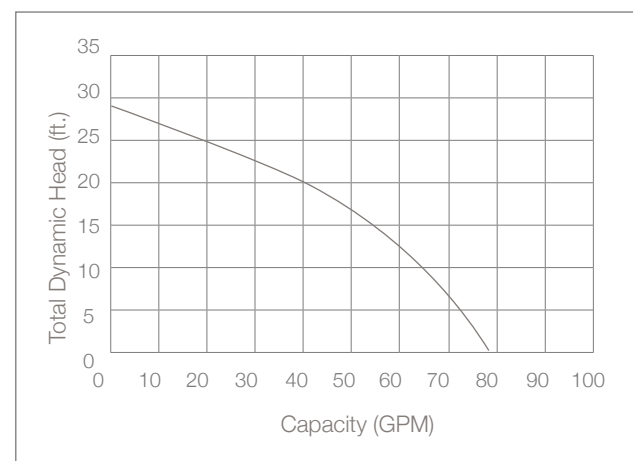
System Specifications

Typical Applications	<ul style="list-style-type: none"> Basement sump Dewatering
Maximum Capacity	Up to 78 GPM
Maximum Head	Up to 29'
Electrical Data	115 V, 1 Ø, 5.8 FLA, 60 Hz
Motor Data	½ HP, 3450 RPM
Recommended Minimum Basin Size	18" x 24"
Automatic Operation	i: Ion Digital Level Control (standard) SPI: Vertical float
Manual Operation	M: Manual
Materials of Construction	Cast iron & stainless steel
Impeller	Cast iron vortex
Power Cord	10' Standard (20' optional)
Discharge Size	2" NPT
Solids Handling	½"

Pump Dimensions



Pump Performance



Features

- Energy efficient motor
- Carbon ceramic mechanical seal
- Thermal overload protection
- Piggy back Ion® digital level control switch has no moving parts (standard)
- Stainless steel screen prevents debris from entering the pump
- 3 year warranty



BA75i

Sump Pump

- Basement Sump
- Dewatering



37 Forestwood Dr., Romeoville, IL 60446 www.ionproducts.net (815) 886-9200

Patent No. 8,591,198

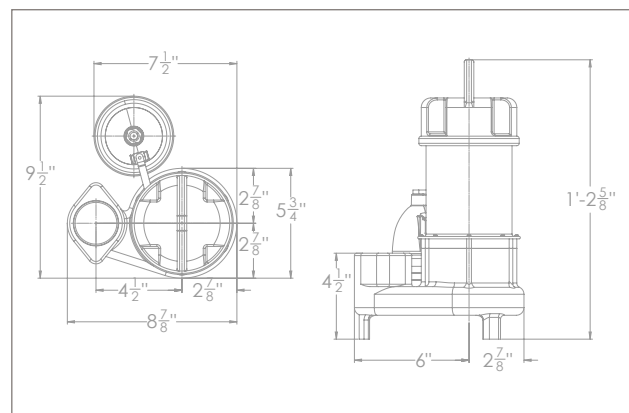
BA75i

Sump Pump

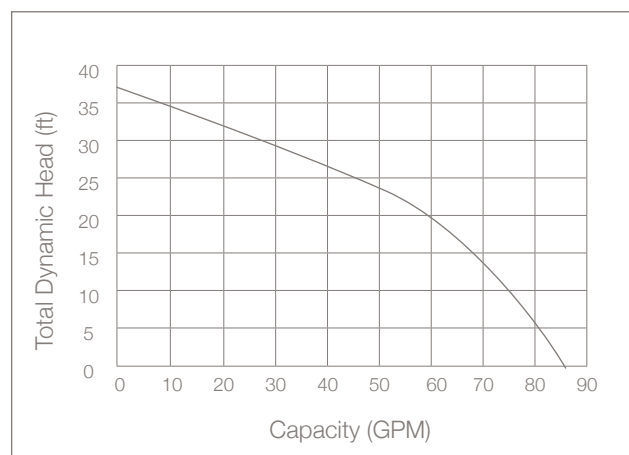
System Specifications

Typical Applications	<ul style="list-style-type: none"> • Basement sump • Dewatering
Maximum Capacity	Up to 85 GPM
Maximum Head	Up to 37'
Electrical Data	115 V, 1 Ø, 7.5 FLA, 60 Hz
Motor Data	¾ HP, 3450 RPM
Minimum Sump Diameter	18"
Automatic Operation	i: Ion Digital Level Control (standard) SPI: Vertical float
Manual Operation	M: Manual
Materials of Construction	Cast iron & stainless steel
Impeller	Cast iron vortex
Power Cord	20' Standard
Discharge Size	2" NPT
Solids Handling	½"

Pump Dimensions



Pump Performance



Features

- Energy efficient motor
- Carbon ceramic mechanical seal
- Thermal overload protection
- Piggy back Ion® digital level control switch has no moving parts (standard)
- Stainless steel screen prevents debris from entering the pump
- 3 year warranty



ES45

Effluent Pump

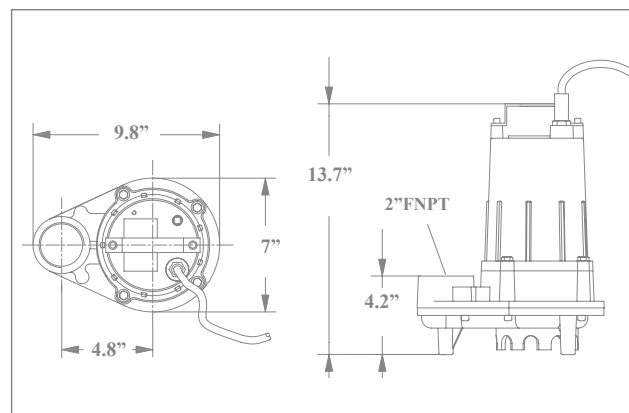
- Septic tank effluent
- Dewatering
- High head sump



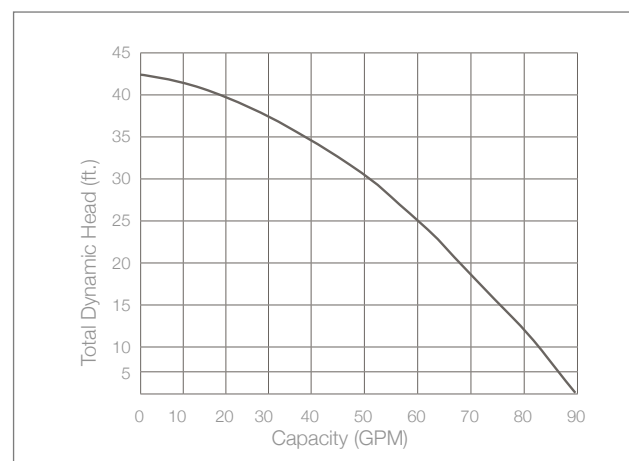
System Specifications

Typical Applications	<ul style="list-style-type: none"> • Septic tank effluent • Dewatering • High head sump
Maximum Capacity	Up to 90 GPM
Maximum Head	Up to 42'
Electrical Data	
• ES45M1	115 V, 1 Ø, 11 FLA, 60 Hz
• ES45M21	230 V, 1 Ø, 5.5 FLA, 60 Hz
Motor Data	½ HP, 3450 RPM
Intermittent Liquid Temperature	104° F
Recommended Minimum Basin Size	18" x 30"
Automatic Operation	i: Ion Digital Level Control (standard) W: Wide angle float M: Manual
Manual Operation	
Materials of Construction	Cast iron
Impeller	Cast iron vortex
Power Cord	SJTW 16/3C-20'
Discharge	2" NPT
Solids Handling	¾"

Pump Dimensions



Pump Performance



Features

- Carbon ceramic mechanical seal
- Automatic reset thermal overload for maximum protection
- Lower single-row ball-bearing construction
- Piggy back Ion® digital level control switch has no moving parts (standard)
- 3 year warranty



ES50-100

Effluent Pump

- Septic tank effluent
- Dewatering
- High head sump



System Specifications

Typical Applications	• Septic tank effluent
	• Dewatering
	• High head sump

Maximum Capacity	
• ES50	Up to 108 GPM
• ES100	Up to 135 GPM

Maximum Head	
• ES50	Up to 53'
• ES100	Up to 82'

Electrical Data	
• ES50M-1	115 V, 1 Ø, 12 FLA, 60 Hz
• ES50M-21	230 V, 1 Ø, 6 FLA, 60 Hz
• ES50M-03	208 V, 3 Ø, 3.5 FLA, 60 Hz
• ES50M-23	230 V, 3 Ø, 3.2 FLA, 60 Hz
• ES50M-43	460 V, 3 Ø, 1.6 FLA, 60 Hz
• ES100M-21	230 V, 1 Ø, 12 FLA, 60 Hz
• ES100M-03	208 V, 3 Ø, 6.6 FLA, 60 Hz
• ES100M-23	230 V, 3 Ø, 6.0 FLA, 60 Hz
• ES100M-43	460 V, 3 Ø, 3.0 FLA, 60 Hz

Motor Data	½-1 HP, 3450 RPM
------------	------------------

Intermittent Liquid Temperature	104° F
---------------------------------	--------

Recommended Minimum Basin Size	18" x 30"
--------------------------------	-----------

Automatic Operation	i: Ion Digital Level Control (standard) W: Wide angle float M: Manual
Manual Operation	

Materials of Construction	Cast iron
---------------------------	-----------

Impeller	Cast iron 2 vane closed
----------	-------------------------

Power Cord	
ES50/100 1Ø	16/3C-20'
ES50/100 3Ø	16/4C-20'

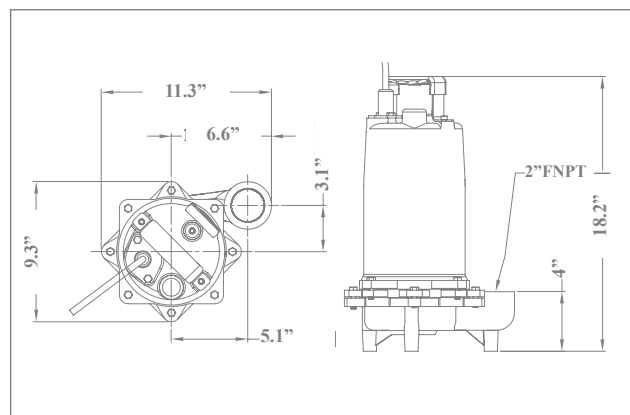
Discharge	2" NPT
-----------	--------

Solids Handling	¾"
-----------------	----

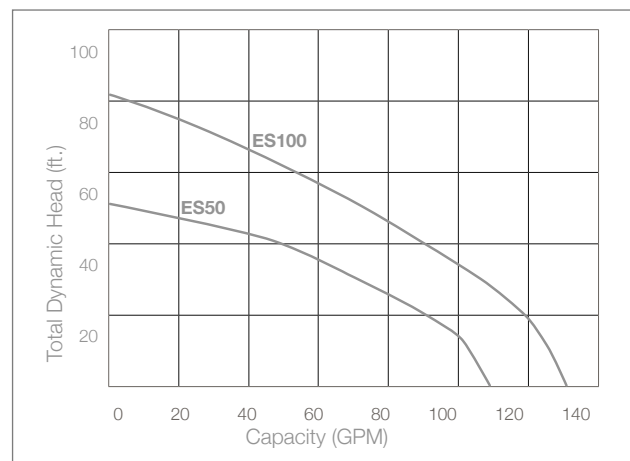
ES50-100

Effluent Pump

Pump Dimensions



Pump Performance



Features

- Carbon ceramic mechanical seal
- Automatic reset thermal overload for maximum protection
- Lower single-row ball-bearing construction
- 3 year warranty



X-ONEi

Submersible All In One Pump

- Basement Sump
- Septic Tank Effluent
- Sewage Ejector



37 Forestwood Dr., Romeoville, IL 60446 www.ionproducts.net (815) 886-9200

Patent No. 8,591,198

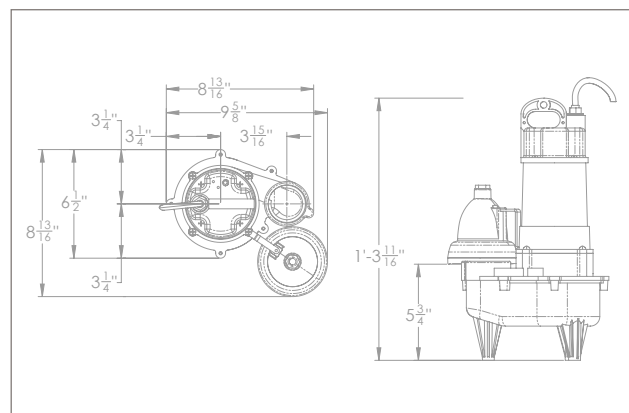
X-ONEi

Submersible All In One Pump

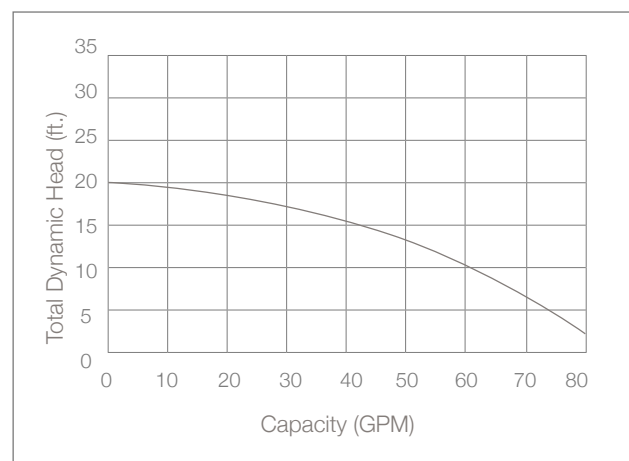
System Specifications

Typical Applications	<ul style="list-style-type: none"> • Basement sump • Sewage Ejector • Septic tank effluent
Maximum Capacity	Up to 80 GPM
Maximum Head	Up to 20'
Electrical Data	115 V, 1 Ø, 8.2 FLA, 60 Hz
Motor Data	1½ HP, 3450 RPM
Intermittent Liquid Temperature	120° F
Recommended Minimum Basin Size	18" x 24"
Automatic Operation	i: Ion Digital Level Control (standard)
Manual Operation	M: Manual
Materials of Construction	Cast iron & engineered thermoplastic
Power Cord	10' Standard
Discharge	2" with 1½" reducer
Solids	1½" to 2"

Pump Dimensions



Pump Performance



Features

- Carbon ceramic mechanical seal
- Oil-filled motor with automatic reset thermal overload protection
- Upper and lower single-row ball-bearing construction
- Piggyback Ion® digital level control switch has no moving parts (standard)
- 3 year warranty



SE40-60i

Sewage Pump

- Septic tank effluent
- High capacity sump
- Commercial sewage
- Residential sewage



SE40-60i

Sewage Pump

System Specifications

Typical Applications	• Septic tank effluent
	• High capacity sump
	• Commercial sewage
	• Residential sewage

Maximum Capacity	SE40: Up to 117 GPM
	SE60: Up to 174 GPM

Maximum Head	Up to 26'
--------------	-----------

Electrical Data	SE40M-1: 115 V, 1 Ø, 11 FLA, 60 Hz
	SE40M-21: 230 V, 1 Ø, 5.5 FLA, 60Hz
	SE60M-1: 115 V, 1 Ø, 12 FLA, 60 Hz
	SE60M-01: 208 V, 1 Ø, 7.5 FLA, 60Hz
	SE60M-21: 230 V, 1 Ø, 6.0 FLA, 60Hz
	SE60M-23: 230 V 3 Ø, 4.5 FLA, 60Hz
	SE60M-43: 460 V, 3 Ø, 2.3 FLA 60Hz,
	SE60M-03: 208 V, 3 Ø, 4.7 FLA, 60Hz

Motor Data	SE40: 4/10 HP, 1750 RPM
	SE60: 6/10 HP, 1750 RPM

Recommended Minimum Basin Size	18" x 30"
--------------------------------	-----------

Automatic Operation	i: Ion Digital Level Control (standard)
---------------------	---

Manual Operation	M: Manual
------------------	-----------

Materials of Construction	Cast iron
---------------------------	-----------

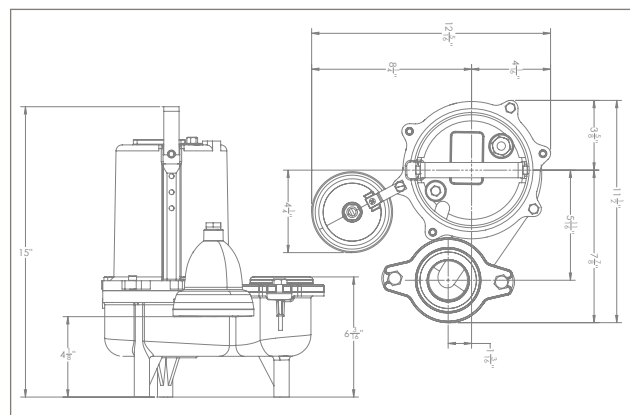
Impeller	Cast iron, 2-vane
----------	-------------------

Power Cord	20' Standard
------------	--------------

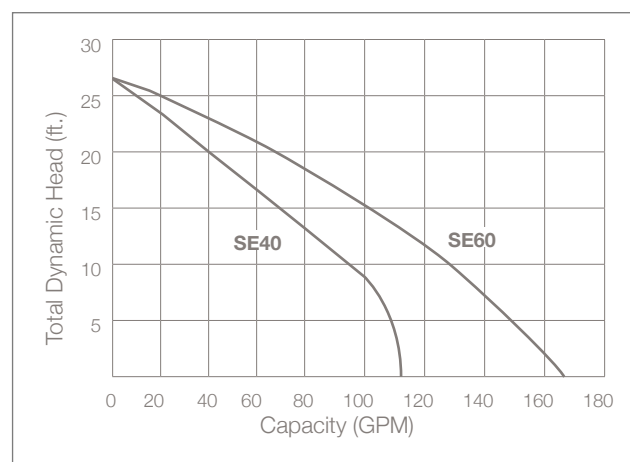
Discharge Size	2" NPT (3" NPT optional)
----------------	--------------------------

Solids Handling	2"
-----------------	----

Pump Dimensions



Pump Performance



Features

- Carbon ceramic mechanical seal
- Oil-filled high efficiency PSC motor
- Uses single-row ball-bearing construction
- Piggy back Ion® digital level control switch has no moving parts (standard)
- 3 year warranty



SHV40i

Sewage Pump

- Light commercial sewage
- Residential sewage
- High-capacity sump
- Septic tank effluent



37 Forestwood Dr., Romeoville, IL 60446 www.ionproducts.net (815) 886-9200

Patent No. 8,591,198

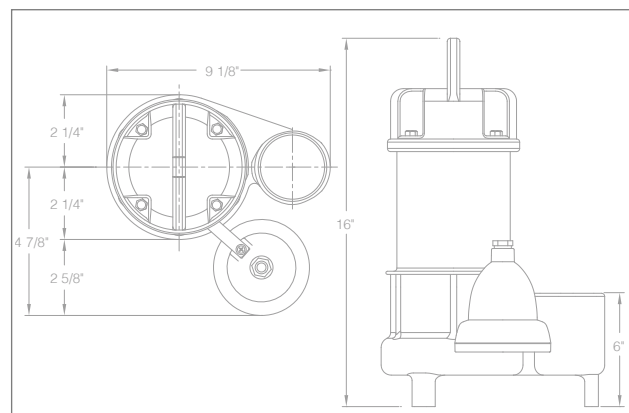
SHV40i

Sewage Pump

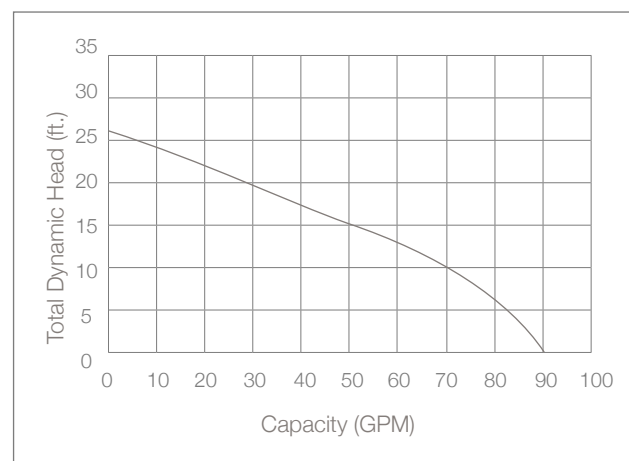
System Specifications

Typical Applications	<ul style="list-style-type: none"> • Light commercial sewage • Residential sewage • High-capacity sump • Septic tank effluent
Maximum Capacity	Up to 90 GPM
Maximum Head	Up to 25'
Electrical Data	<ul style="list-style-type: none"> • 115 V, 1 Ø, 8.5 FLA, 60 Hz • 230 V, 1 Ø, 4.3 FLA, 60 Hz
Motor Data	1/2 HP, 3450 RPM
Intermittent Liquid Temperature	130° F
Recommended Minimum Basin Size	18" x 30"
Automatic Operation	i: Ion Digital Level Control (standard)
Manual Operation	M: Manual
Materials of Construction	Cast iron and stainless steel
Impeller	Cast iron vortex
Power Cord	20' Standard
Discharge	2" NPT
Solids Handling	2"

Pump Dimensions



Pump Performance



Features

- Carbon ceramic mechanical seal
- Automatic reset thermal overload for maximum protection
- Lower single-row ball-bearing construction
- Piggy back Ion® digital level control switch has no moving parts (standard)
- 3 year warranty



SHV75i

Sewage Pump

- Light commercial sewage
- Residential sewage
- High-capacity sump
- Septic tank effluent



37 Forestwood Dr., Romeoville, IL 60446 www.ionproducts.net (815) 886-9200

Patent No. 8,591,198

SHV75i

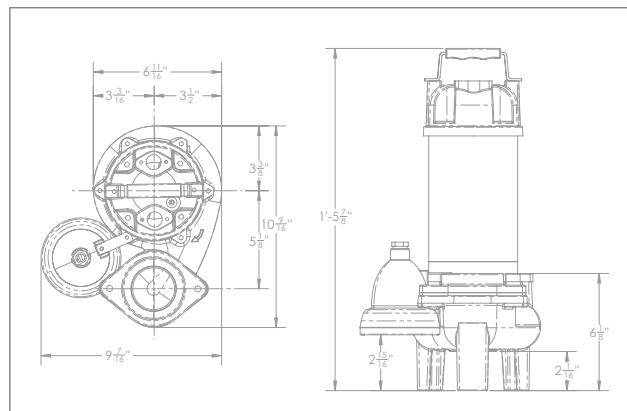
Sewage Pump

System Specifications

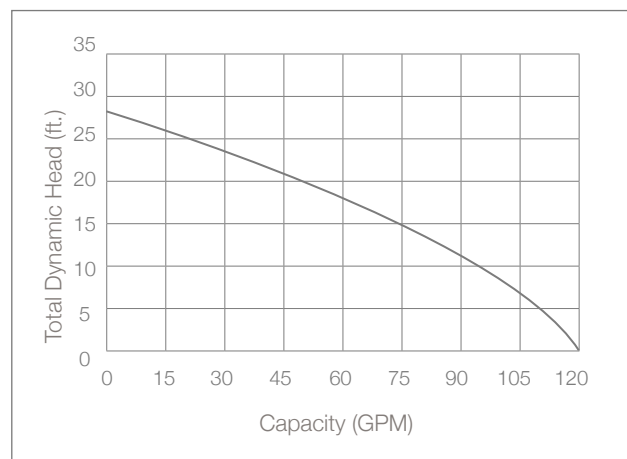
- Typical Applications
- Light commercial sewage
 - Residential sewage
 - High-capacity sump
 - Septic tank effluent

Maximum Capacity	Up to 120 GPM
Maximum Head	Up to 28'
Electrical Data	115 V, 1 Ø, 11.5 FLA, 60 Hz
Motor Data	3/4 HP, 3450 RPM
Intermittent Liquid Temperature	130° F
Recommended Minimum Basin Size	18" x 30"
Automatic Operation	i: Ion Digital Level Control
Manual Operation	M: Manual
Materials of Construction	Cast iron & stainless steel
Impeller	Cast iron vortex
Power Cord	10' Standard
Discharge	2" NPT, optional 3"
Solids Handling	2"

Pump Dimensions



Pump Performance



Features

- Carbon ceramic mechanical seal
- Automatic reset thermal overload for maximum protection
- Lower single-row ball-bearing construction
- Piggy back Ion® digital level control switch with no moving parts (standard)
- 3 year warranty



SHV100

Sewage Pump

- Light commercial sewage
- Residential sewage
- High-capacity sump
- Septic tank effluent



37 Forestwood Dr., Romeoville, IL 60446 www.ionproducts.net (815) 886-9200

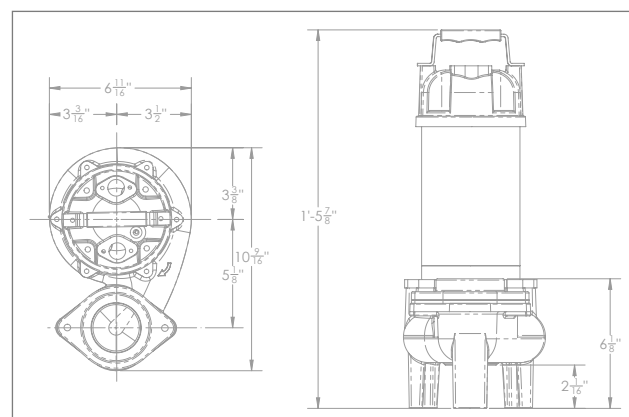
SHV100

Sewage Pump

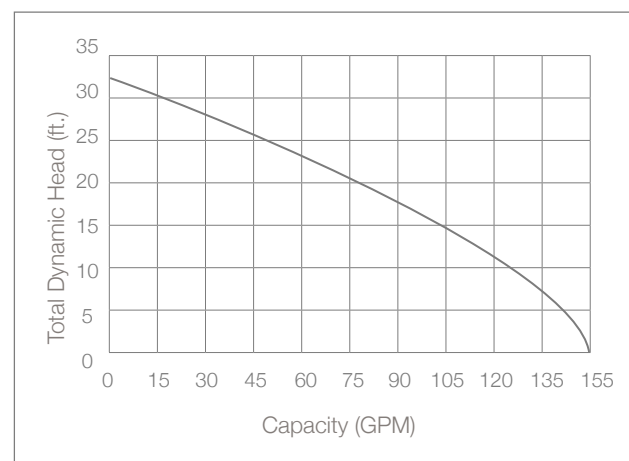
System Specifications

Typical Applications	<ul style="list-style-type: none"> • Light commercial sewage • Residential sewage • High-capacity sump • Septic tank effluent
Maximum Capacity	Up to 155 GPM
Maximum Head	Up to 32'
Electrical Data	115 V, 1 Ø, 14 FLA, 60 Hz 208-230 V, 1 Ø, 7.7-7 FLA, 60 Hz
Motor Data	1 HP, 3450 RPM
Intermittent Liquid Temperature	130° F
Recommended Minimum Basin Size	18" x 30"
Manual Operation	M: Manual (Standard)
Automatic Operation	i: Ion Digital Level Control (115 Volt Only) W: Wide Angle Switch (115 Volt or 230 Volt)
Materials of Construction	Cast iron and stainless steel
Impeller	Cast iron vortex
Power Cord	20' Standard
Discharge	2" NPT, optional 3"
Solids Handling	2"

Pump Dimensions



Pump Performance



Features

- Carbon ceramic mechanical seal
- Automatic reset thermal overload for maximum protection
- Lower single-row ball-bearing construction
- 3 year warranty



SHS50

Sewage Pump

- Septic tank effluent
- Commercial sewage
- Residential sewage
- High-capacity sump



37 Forestwood Dr., Romeoville, IL 60446 www.ionproducts.net [815] 886-9200

SHS50

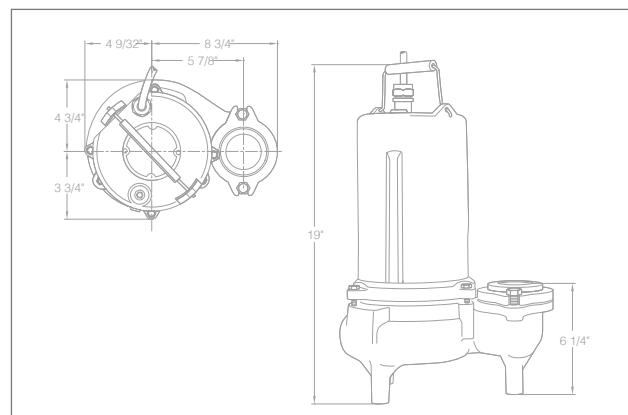
Sewage Pump

System Specifications

- Typical Applications
- Septic tank effluent
 - Commercial sewage
 - Residential sewage
 - High-capacity sump

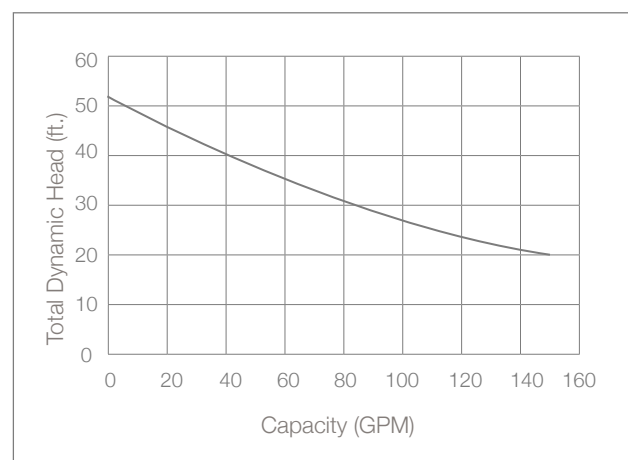
Maximum Capacity	Up to 150 GPM
Maximum Head	Up to 50'
Electrical Data	115 V, 1 Ø, 14.2 FLA, 60 Hz
Motor Data	½ HP, 3450 RPM
Intermittent Liquid Temperature	140° F
Recommended Minimum Basin Size	18" x 30"
Manual Operation	M: Manual (standard)
Automatic Operation	i: Ion Digital Level Control W: Wide angle switch
Materials of Construction	Cast iron
Impeller	Cast iron
Power Cord	20' Standard
Discharge	2" NPT (3" optional)
Solids Handling	2"

Pump Dimensions



High Head Sewage
Ejector Pumps

Pump Performance



Features

- Carbon ceramic mechanical seal
- Automatic reset thermal overload for maximum protection
- Lower single-row ball-bearing construction
- 3 year warranty



SEH50-SEH100-SEH200

Heavy Duty High Head Sewage Pump

- High capacity pump
- Commercial sewage
- Septic tank effluent
- Dewatering
- High head sump



37 Forestwood Dr., Romeoville, IL 60446 www.ionproducts.net [815] 886-9200

SEH50-SEH100-SEH200

Heavy Duty Sewage Pump

System Specifications

Typical Applications	• High capacity pump
	• Commercial sewage
	• Septic tank effluent
	• Dewatering
	• High head sump

Maximum Capacity	
• SEH50	114 GPM @ 10'
• SEH100	138 GPM @ 20'
• SEH200	180 GPM @ 25'

Maximum Head	
• SEH50	Up to 35'
• SEH100	Up to 58'
• SEH200	Up to 72'

Electrical Data	
• SEH50M-11	115 V, 1 Ø, 12.0 FLA, 60 Hz
• SEH50M-21	230 V, 1 Ø, 6.0 FLA, 60 Hz
• SEH50M-03	208 V, 3 Ø, 4.2 FLA, 60 Hz
• SEH50M-23	230 V, 3 Ø, 4.0 FLA, 60 Hz
• SEH50M-43	460 V, 3 Ø, 2.0 FLA, 60 Hz
• SEH100M-21	230 V, 1 Ø, 11.0 FLA, 60 Hz
• SEH100M-03	208 V, 3 Ø, 6.8 FLA, 60 Hz
• SEH100M-23	230 V, 3 Ø, 6.6 FLA, 60 Hz
• SEH100M-43	460 V, 3 Ø, 3.3 FLA, 60 Hz
• SEH200M-21	230 V, 1 Ø, 18.0 FLA, 60 Hz
• SEH200M-03	208 V, 3 Ø, 10.4 FLA, 60 Hz
• SEH200M-23	230 V, 3 Ø, 9.0 FLA, 60 Hz
• SEH200M-43	460 V, 3 Ø, 4.5 FLA, 60 Hz

Motor Data	½ & 1 & 2 HP, 3450 RPM
------------	------------------------

Intermittent Liquid Temperature	104° F
---------------------------------	--------

Recommended Minimum Basin Size	18" x 30"
--------------------------------	-----------

Manual Operation	W: Wide angle float M: Manual
------------------	----------------------------------

Materials of Construction	Cast iron
---------------------------	-----------

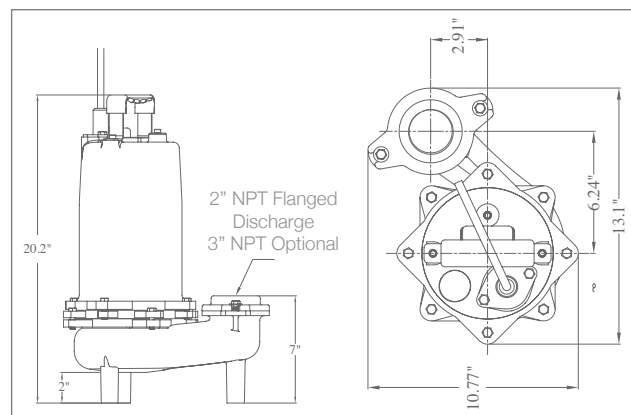
Impeller	Cast iron, vortex
----------	-------------------

Power Cord (20')	
• SEH50 1Ø	16AWG/3C
• SEH100 1Ø	16AWG/3C
• SEH200 1Ø	14AWG/3C
• SEH50 3Ø	16AWG/4C
• SEH100 3Ø	16AWG/4C
• SEH200 3Ø	16AWG/4C

Discharge	2" or 3" NPT optional
-----------	-----------------------

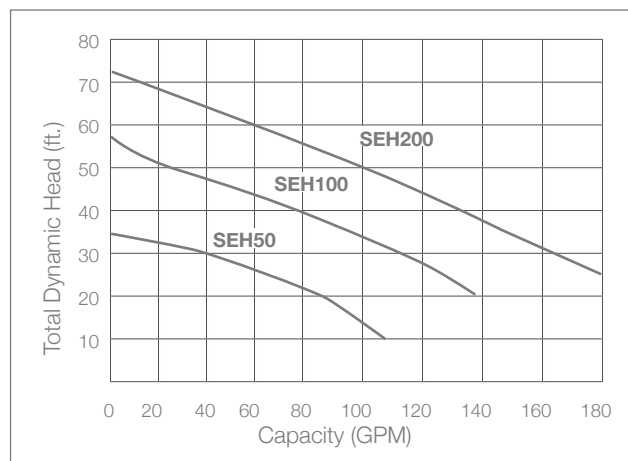
Solids Handling	2"
-----------------	----

Pump Dimensions



High Head Sewage
Ejector Pumps

Pump Performance



Features

- Carbon ceramic mechanical seal
- Automatic reset thermal overload for maximum protection
- Lower single-row ball-bearing construction
- 3 year warranty

Revised: 02.09.17 16:34



SEF100-SEF200

Heavy Duty Sewage Pump

- High capacity pump
- Commercial sewage
- Septic tank effluent
- Dewatering
- High head sump



37 Forestwood Dr., Romeoville, IL 60446 www.ionproducts.net [815] 886-9200

SEF100-SEF200

Heavy Duty Sewage Pump

System Specifications

Typical Applications	• High capacity pump
	• Commercial sewage
	• Septic tank effluent
	• Dewatering
	• High head sump

Maximum Capacity	
• SEF100	190 GPM @ 10'
• SEF200	245 GPM @ 10'

Maximum Head	
• SEF100	Up to 37'
• SEF200	Up to 49'

Electrical Data	
• SEF100M-21	230 V, 1 Ø, 10.8 FLA, 60 Hz
• SEF100M-23	230 V, 3 Ø, 8.0 FLA, 60 Hz
• SEF100M-03	208 V, 3 Ø, 8.5 FLA, 60 Hz
• SEF100M-43	460 V, 3 Ø, 4.0 FLA, 60 Hz
• SEF200M-21	230 V, 1 Ø, 16.7 FLA, 60 Hz
• SEF200M-23	230 V, 3 Ø, 11.0 FLA, 60 Hz
• SEF200M-03	208 V, 3 Ø, 11.5 FLA, 60 Hz
• SEF200M-43	460 V, 3 Ø, 5.5 FLA, 60 Hz

Motor Data	1 & 2 HP, 1750 RPM
------------	--------------------

Intermittent Liquid Temperature	104° F
---------------------------------	--------

Recommended Minimum Basin Size	18" x 30"
--------------------------------	-----------

Manual Operation	M: Manual
------------------	-----------

Materials of Construction	Cast iron
---------------------------	-----------

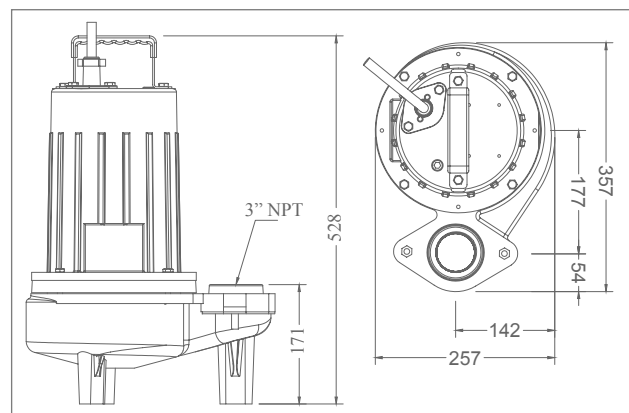
Impeller	Cast iron, vortex
----------	-------------------

Power Cord	
• SEF100M1Ø-20	14AWG/3C-20'
• SEF200M1Ø-20	12AWG/3C-20'
• SEF100M 3Ø-20	14AWG/4C-20'
• SEF200M 3Ø-20	14AWG/4C-20'

Discharge	2" or 3" NPT opt.
-----------	-------------------

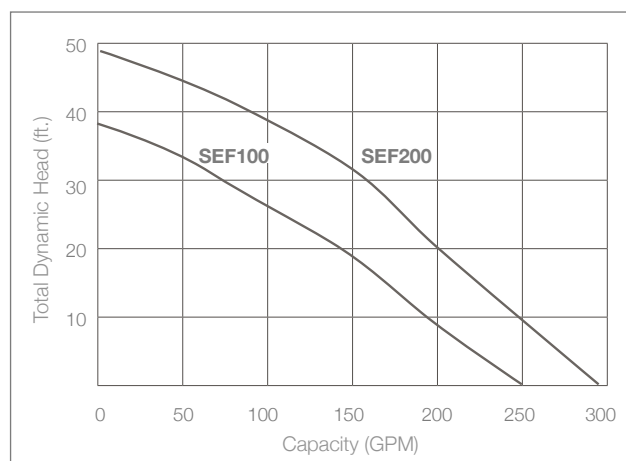
Solids Handling	2"
-----------------	----

Pump Dimensions



High Flow Sewage
Ejector Pumps

Pump Performance



Features

- Carbon ceramic mechanical seal
- Automatic reset thermal overload for maximum protection
- Lower single-row ball-bearing construction
- 3 year warranty



HT40

Submersible Sump Pump

- Boiler blow down
- Condensate pits
- Hot water transfer



HT40

Submersible Sump Pump

System Specifications

- Typical Applications
- Boiler blow down
 - Condensate pits
 - Hot water transfer

Maximum Capacity Up to 50 GPM

Maximum Head Up to 23'

Electrical Data 115 V, 1 Ø, 12 FLA, 60 Hz

Motor Data 1/3 HP, 1750 RPM

Intermittent Liquid Temperature 194° F

Recommended Minimum Basin Size 18" x 24"

Manual Operation M: Manual (standard)
Automatic Operation High temperature float

Materials of Construction Cast iron

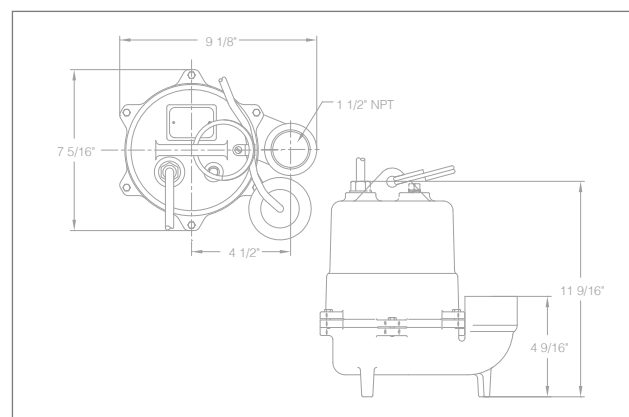
Impeller Thermoplastic vortex

Power Cord 20' Standard

Discharge 1 1/2" NPT

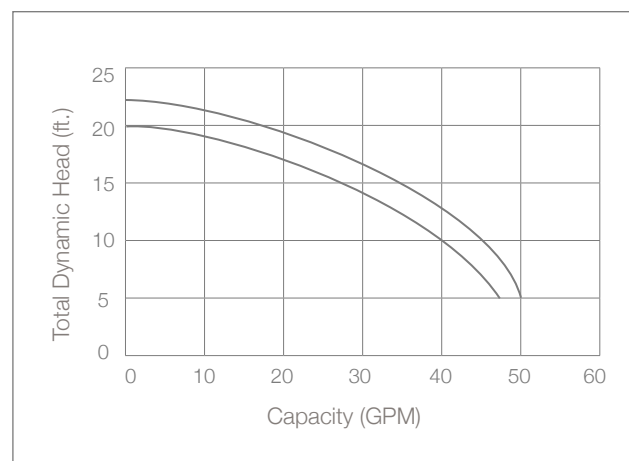
Solids Handling 3/4"

Pump Dimensions



Special Application Pumps

Pump Performance



Features

- Carbon ceramic mechanical seal
- Automatic reset thermal overload for maximum protection
- Piggy back models available
- 3 year warranty



EXP50

Explosion Proof Pump

- Service stations
- Car/truck washes
- Military bases
- Truck decks



37 Forestwood Dr., Romeoville, IL 60446 www.ionproducts.net [815] 886-9200

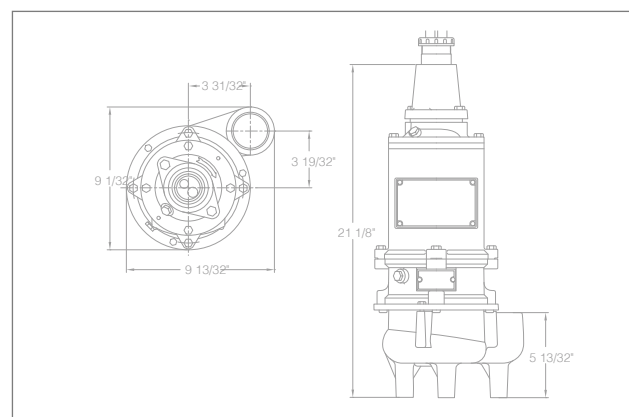
EXP50

Explosion Proof Pump

System Specifications

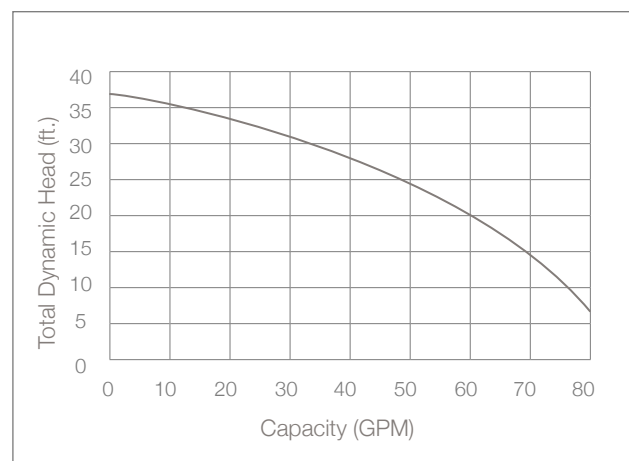
Typical Applications	<ul style="list-style-type: none"> • Service stations • Car/truck washes • Military bases • Truck decks
Maximum Capacity	Up to 80 GPM
Maximum Head	Up to 36'
Electrical Data	<ul style="list-style-type: none"> • 230 V, 1 Ø, 4.9 FLA, 60 Hz • 230 V, 3 Ø, 3.2 FLA, 60 Hz • 460 V, 3 Ø, 1.6 FLA, 60 Hz
Motor Data	½ HP, 1750 RPM
Intermittent Liquid Temperature	140° F
Recommended Minimum Basin Size	24" x 30"
Operation	Control Panel Required
Materials of Construction	Cast iron
Impeller	Cast iron
Power Cord	15' Standard
Discharge	1½" NPT
Solids Handling	¾"

Pump Dimensions



Special Application Pumps

Pump Performance



Pump Features

- Oil filled motor
- Upper & lower bearings
- Single row ball bearing construction
- Dual carbon/ceramic Type 21 mechanical shaft seal
- 3 year warranty
- NEMA 4X enclosure with inner door

Control Panel Features

- Separate pump and control circuit breaker
- Intrinsically safe module for floats
- H-O-A switch
- Run, seal leak, and alarm light
- Motor starter and capacitor
- UL 913

Take Control.
ion
Technologies



WC33i+

Sump Pump With Built-In High Water Alarm

- Basement Sump
- Septic Tank Effluent
- Dewatering



37 Forestwood Dr., Romeoville, IL 60446 www.ionproducts.net (815) 886-9200

Patent No. 8,591,198

WC33i+

Sump Pump With Built-In High Water Alarm

System Specifications

- Typical Applications
- Basement sump
 - Dewatering
 - Septic tank effluent

Maximum Capacity Up to 45 GPM

Maximum Head Up to 24'

Electrical Data 115 V, 1 Ø, 4 FLA, 60 Hz

Motor Data 1/3 HP, 3450 RPM

Recommended Minimum Basin Size 18" x 24"

Automatic Operation i+: Ion+ (standard)

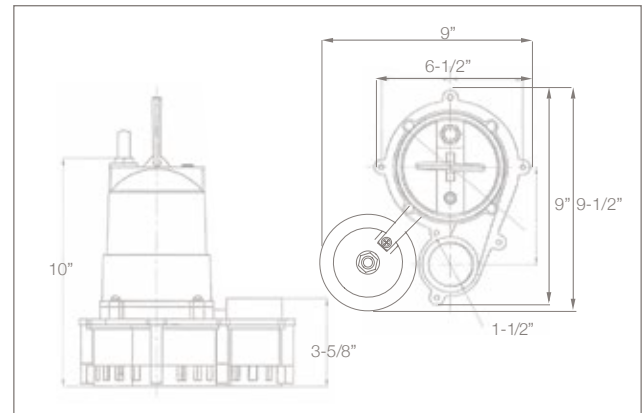
Materials of Construction Cast iron & engineered thermoplastic

Power Cord 10' Standard

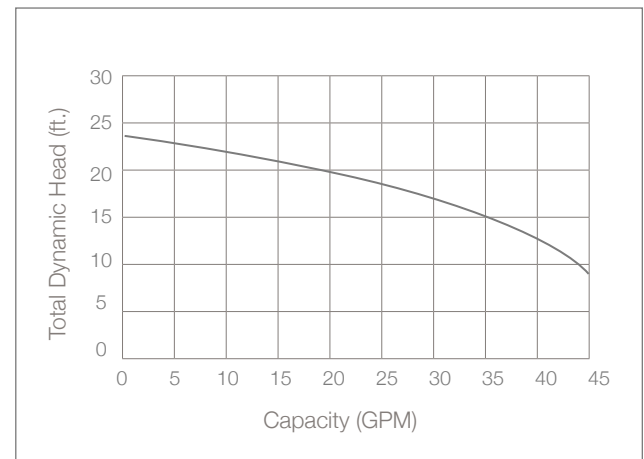
Discharge 1 1/2" NPT

Solids 1/2"

Pump Dimensions



Pump Performance



Ion+ Sump Pumps

Features

- Carbon ceramic mechanical seal
- Oil-filled high efficiency PSC motor that uses half the AC power of most 1/3 HP pumps
- Piggyback Ion+® digital level control switch with alarm has no moving parts (standard)
- 3 year warranty



BA33i+

Sump Pump With Built-In High Water Alarm

- Basement Sump
- Dewatering



37 Forestwood Dr., Romeoville, IL 60446 www.ionproducts.net (815) 886-9200

Patent No. 8,591,198

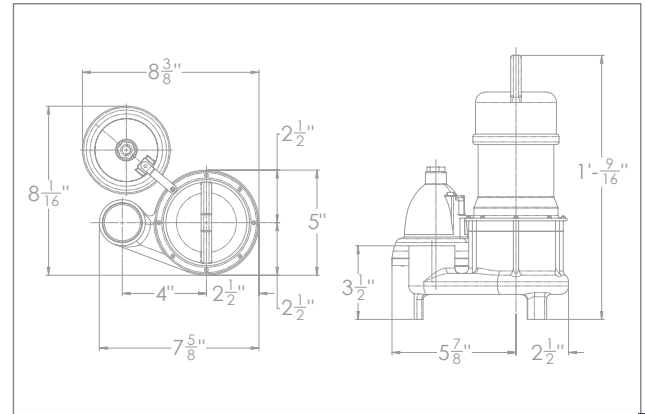
BA33i+

Sump Pump With Built-In High Water Alarm

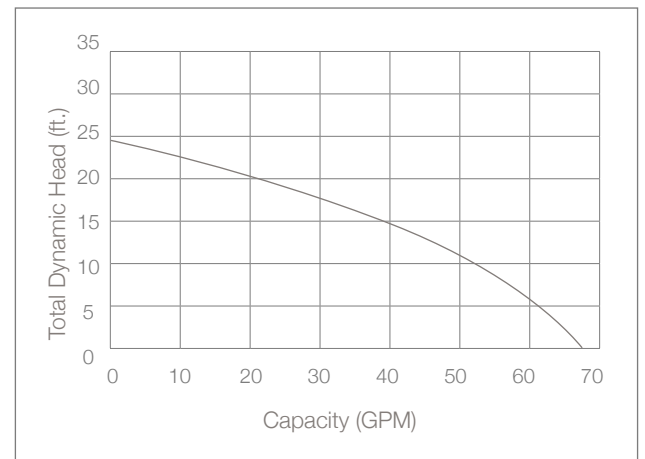
System Specifications

Typical Applications	<ul style="list-style-type: none"> Basement sump Dewatering
Maximum Capacity	Up to 68 GPM
Maximum Head	Up to 25'
Electrical Data	115 V, 1 Ø, 4.5 FLA, 60 Hz
Motor Data	1/3 HP, 3450 RPM
Recommended Minimum Basin Size	18" x 24"
Automatic Operation	i+: Ion+ (standard)
Materials of Construction	Cast iron & stainless steel
Impeller	Thermoplastic vortex
Power Cord	10' Standard
Discharge Size	1½" NPT
Solids Handling	½"

Pump Dimensions



Pump Performance



Features

- Energy efficient motor
- Carbon ceramic mechanical seal
- Thermal overload protection
- Piggyback Ion+® digital level control switch with alarm has no moving parts (standard)
- Stainless steel screen prevents debris from entering the pump
- 3 year warranty



BA50i+

Sump Pump With Built-In High Water Alarm

- Basement Sump
- Dewatering



37 Forestwood Dr., Romeoville, IL 60446 www.ionproducts.net (815) 886-9200

Patent No. 8,591,198

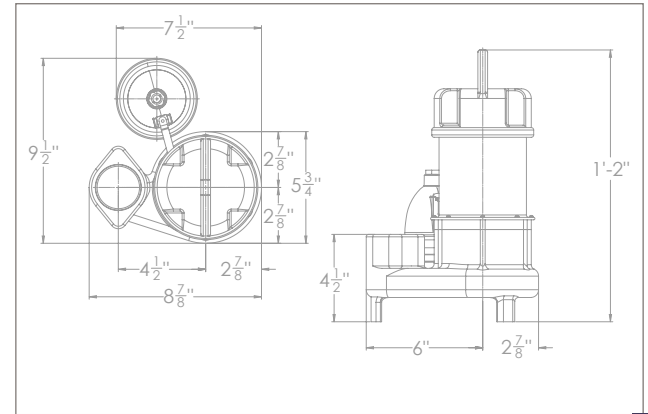
BA50i+

Sump Pump With Built-In High Water Alarm

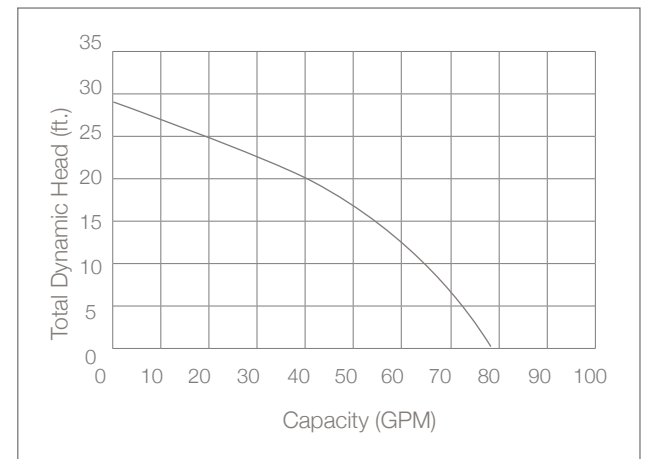
System Specifications

Typical Applications	<ul style="list-style-type: none"> • Basement sump • Dewatering
Maximum Capacity	Up to 78 GPM
Maximum Head	Up to 29'
Electrical Data	115 V, 1 Ø, 5.8 FLA, 60 Hz
Motor Data	½ HP, 3450 RPM
Recommended Minimum Basin Size	18" x 24"
Automatic Operation	i+: Ion+ (standard)
Materials of Construction	Cast iron & stainless steel
Impeller	Cast iron vortex
Power Cord	10' Standard
Discharge Size	2" NPT
Solids Handling	½"

Pump Dimensions



Pump Performance



Features

- Energy efficient motor
- Carbon ceramic mechanical seal
- Thermal overload protection
- Piggyback Ion+® digital level control switch with alarm has no moving parts (standard)
- Stainless steel screen prevents debris from entering the pump
- 3 year warranty



BA75i+

Sump Pump With Built-In High Water Alarm

- Basement Sump
- Dewatering



37 Forestwood Dr., Romeoville, IL 60446 www.ionproducts.net (815) 886-9200

Patent No. 8,591,198

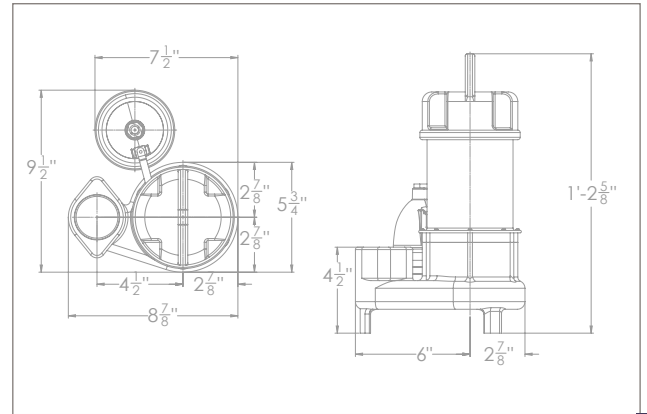
BA75i+

Sump Pump With Built-In High Water Alarm

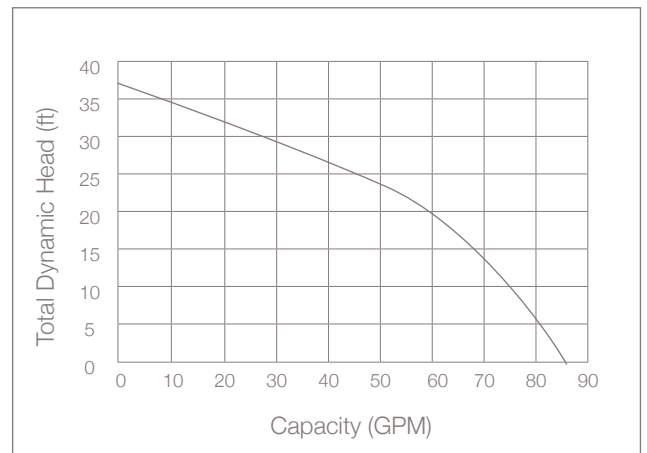
System Specifications

Typical Applications	<ul style="list-style-type: none"> • Basement sump • Dewatering
Maximum Capacity	Up to 85 GPM
Maximum Head	Up to 37'
Electrical Data	115 V, 1 Ø, 7.5 FLA, 60 Hz
Motor Data	¾ HP, 3450 RPM
Minimum Sump Diameter	18"
Automatic Operation	i+: Ion+ (standard)
Materials of Construction	Cast iron & stainless steel
Impeller	Cast iron vortex
Power Cord	10' Standard
Discharge Size	2" NPT
Solids Handling	½"

Pump Dimensions



Pump Performance



Features

- Energy efficient motor
- Carbon ceramic mechanical seal
- Thermal overload protection
- Piggyback Ion+® digital level control switch with alarm has no moving parts (standard)
- Stainless steel screen prevents debris from entering the pump
- 3 year warranty

Take Control.
ion
Technologies



X-ONEi+

Submersible All In One Pump With Built-In High Water Alarm

- Basement Sump
- Septic Tank Effluent
- Sewage Ejector



37 Forestwood Dr., Romeoville, IL 60446 www.ionproducts.net (815) 886-9200

Patent No. 8,591,198

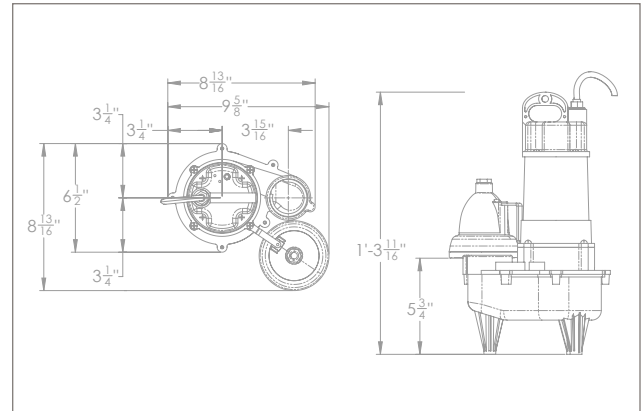
X-ONEi+

Submersible All In One Pump With Built-In High Water Alarm

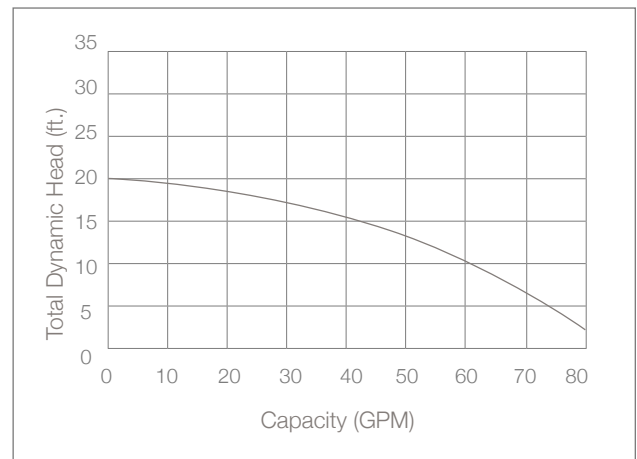
System Specifications

Typical Applications	<ul style="list-style-type: none"> • Basement sump • Sewage Ejector • Septic tank effluent
Maximum Capacity	Up to 80 GPM
Maximum Head	Up to 20'
Electrical Data	115 V, 1 Ø, 8.2 FLA, 60 Hz
Motor Data	½ HP, 3450 RPM
Intermittent Liquid Temperature	120° F
Recommended Minimum Basin Size	18" x 24"
Automatic Operation	i+: Ion+ (standard)
Materials of Construction	Cast iron & engineered thermoplastic
Power Cord	10' Standard
Discharge	2" with 1½" reducer
Solids	1½" to 2"

Pump Dimensions



Pump Performance



Ion+ Sewage Pumps

Features

- Carbon ceramic mechanical seal
- Oil-filled high efficiency PSC motor that uses half the AC power of most ½ HP pumps
- Upper and lower single-row ball-bearing construction
- Piggyback Ion+® digital level control switch with alarm has no moving parts (standard)
- 3 year warranty



SHV40i+

Sewage Pump With Built-In High Water Alarm

- Light commercial sewage
- Residential sewage
- High-capacity sump
- Septic tank effluent



37 Forestwood Dr., Romeoville, IL 60446 www.ionproducts.net (815) 886-9200

Patent No. 8,591,198

SHV40i+

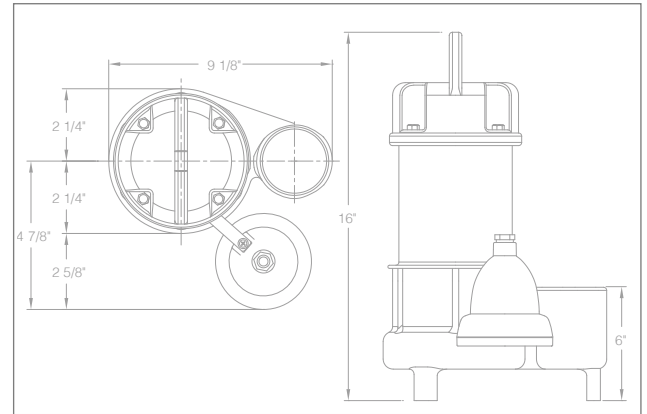
Sewage Pump With Built-In High Water Alarm

System Specifications

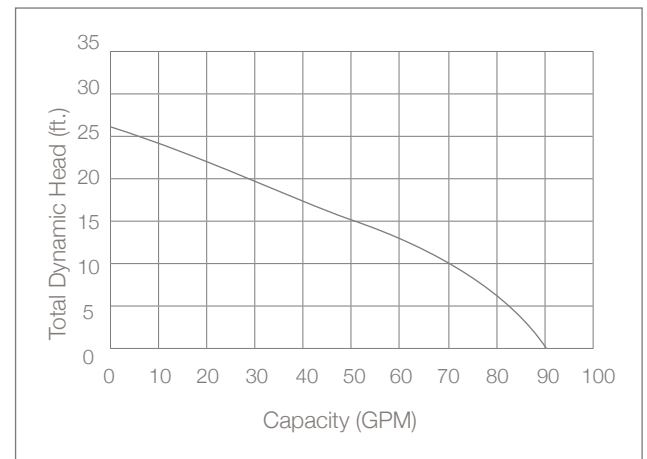
- Typical Applications
- Light commercial sewage
 - Residential sewage
 - High-capacity sump
 - Septic tank effluent

Maximum Capacity	Up to 90 GPM
Maximum Head	Up to 25'
Electrical Data	115 V, 1 Ø, 8.5 FLA, 60 Hz
Motor Data	1/2 HP, 3450 RPM
Intermittent Liquid Temperature	130° F
Recommended Minimum Basin Size	18" x 30"
Automatic Operation	i+: Ion+ (standard)
Materials of Construction	Cast iron and stainless steel
Impeller	Cast iron vortex
Power Cord	20' Standard
Discharge	2" NPT
Solids Handling	2"

Pump Dimensions



Pump Performance



Ion+ Sewage Pumps

Features

- Carbon ceramic mechanical seal
- Automatic reset thermal overload for maximum protection
- Lower single-row ball-bearing construction
- Piggyback Ion+® digital level control switch with alarm has no moving parts (standard)
- 3 year warranty



Ion®

Digital Level Control Switch

- Rated for use in both sump and sewage pump applications
- Will work with any 115 volt pump up to 15 amps
- Solid state sensing technology with no moving parts to wear or fail
- Designed to operate for over 2 million cycles
- Longer pumping differential means it will pump more water less frequently
- 10 and 20 foot cord options are available

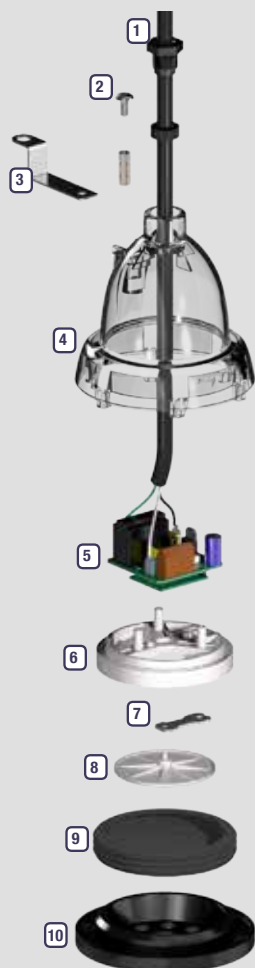


37 Forestwood Dr., Romeoville, IL 60446 www.ionproducts.net [815] 886-9200

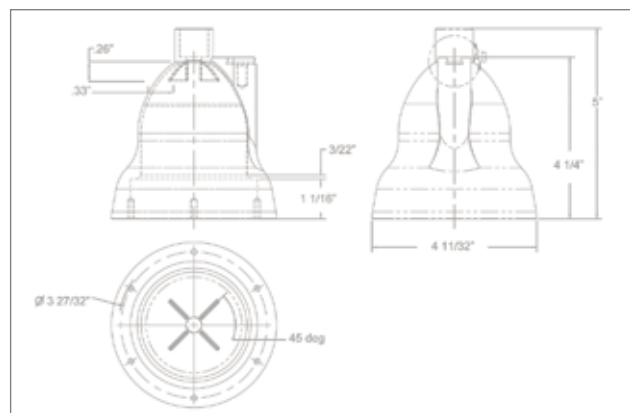
Patent No. 8,591,198

Assembly View

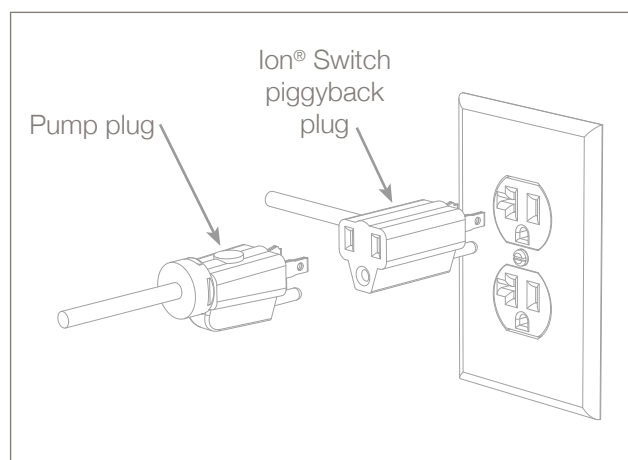
1. Cord strain relief follower
2. Mounting arm screw
3. Switch mounting arm
4. Top housing
5. Control and logic boards
6. Switch bracket
7. Strain gauge
8. Pressure plate
9. Diaphragm with integrated o-ring gasket
10. Diaphragm guard



Switch Dimensions



Piggyback Plug Illustration



System Specifications

- Type of Application: Sump and sewage
- Voltage: 115 volt
- Amp Rating: 13 FLA, 15 amp max
- Power Cord: 10' or 20'
- Pump Range: 6" or 8.5"
- 3 year warranty



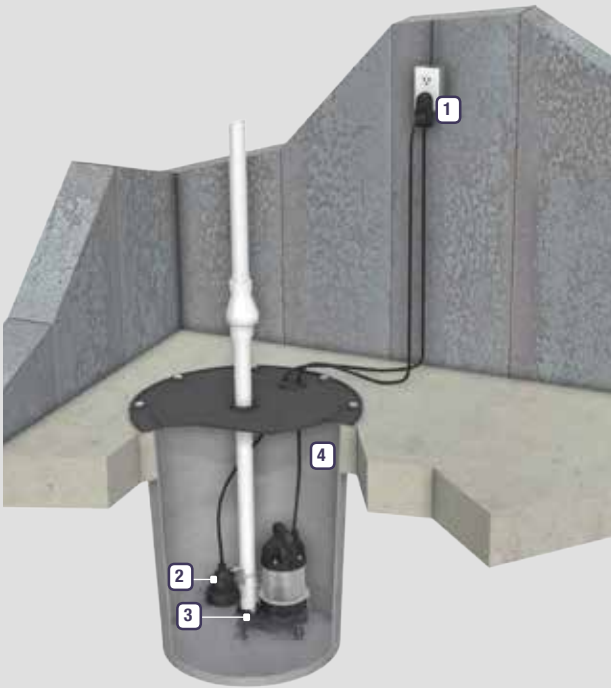
Ion+[®]

Digital Level Control with High Water Alarm

- World's first digital piggyback style sump & sewage pump level control sensor with integrated alarms
- Provides alarm notification via an audible buzzer, LED indicators, and dry alarm contact
- Device can be connected to external alarm notification systems such as our Ion Gateway[®] or MetroMail[™] systems, for real-time notification capability
- Ion[®] digital level control technology provides superior performance and reliability when compared to industry standard mechanical pump switches

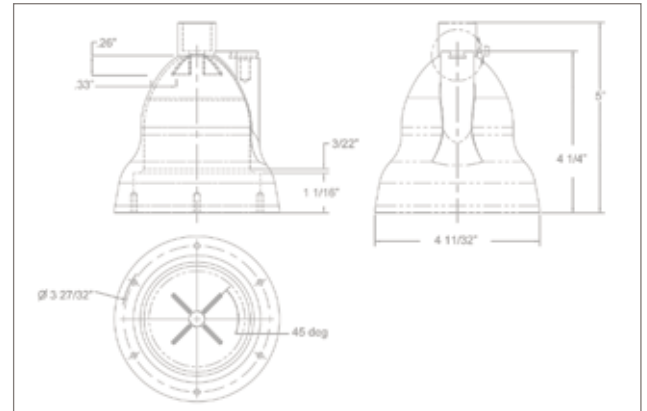


Typical Installation

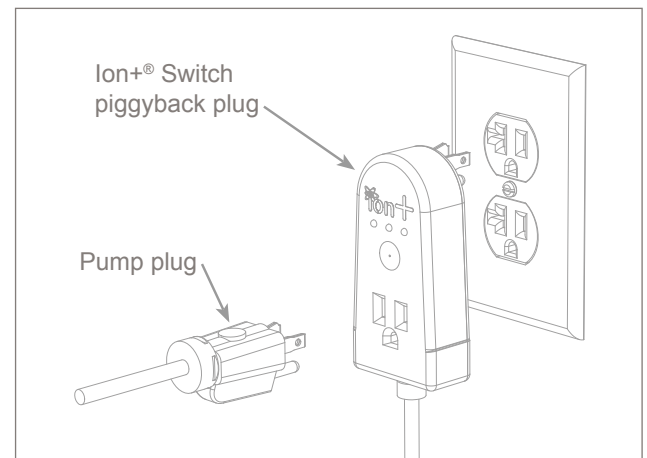


1. Ion+® piggyback plug with audible alarm and visual status LEDs
2. Ion+® digital level control sensor
3. Standard Ion® StormPro® pump (not included)
4. Basin (not included)

Switch Dimensions



Piggyback Plug Illustration



System Specifications

- Built in alarm and monitoring system
- Power, system and high water LEDs indicate system status
- Audible alarm buzzer
- Dry contact
- Remote alarm port - type RJ11
- First of a kind solid-state sensing technology with no moving parts
- Starts and stops pump via the piggyback pump power receptacle
- Multipoint sealing mechanism that supersedes single surface seals
- Inverter rated for use with most battery backup systems
- No contact points
- 3 year warranty



Ion Genesis®

Smart Controller and Sensors



The Ion Genesis® is a first of a kind digital pump controller that is designed to operate one or two pumps, alternating or simultaneously, with combined amp draws of 12 amps. The Ion® digital level sensors are used in place of standard float switches and allow for an adjustable on level from 2.5" to 72" in 0.5" increments. The Ion Genesis® controller incorporates smart sensing technology that utilizes critical system information such as pump amp draw, how long the pump operates, water level, and many more features.

You can collect and analyze system data never before possible with the level sensor controllers. Any change or variation in your system performance will sound an alarm or alert of possible equipment failure before flooding occurs. This new technology allows you to adjust the turn on level of your system without removing the system cover.

Patent No. 8,591,198 & 8,907,789 B2

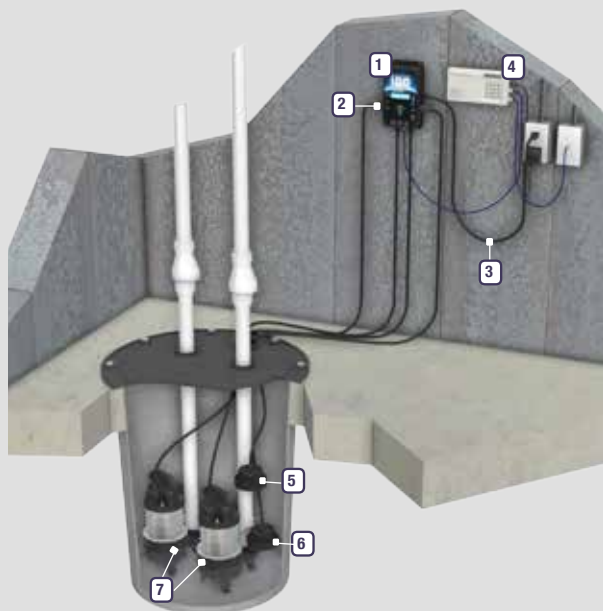


37 Forestwood Dr., Romeoville, IL 60446 www.ionproducts.net (815) 886-9200

Ion Genesis®

Smart Controller and Sensors

Typical Installation Diagram



1. Ion Genesis®
2. Pump outlets
3. Power cord
4. Dialer (optional)
5. High water sensor
6. Digital level sensor
7. Pumps (optional)

System Features



1. LED Lights: Indicate when the pump or pumps are running, system power, and alarm mode.
2. LCD Screen: Displays vital equipment data and alarm notifications.
3. Plug & Play Outlets: Pump(s) plug directly into controller just as they would a wall outlet.
4. Ion® Digital Level Sensor: Communicates system levels to the Ion Genesis® controller.
5. Ion® Digital High Water Sensor: Detects high water and also acts as a secondary switch in case the primary Ion® sensor fails.
6. Remote Alarm Contact: Connects to optional dialer or existing security system for remote monitoring when you're away.
7. Reset/Test Button: Allows user to manually test system without having to access basin.
8. On Level: Manually adjust the pumping turn on level from 2.5" to 72" in 0.5" increments.

System Specifications

- Featuring Ion® digital level sensors
 - First of its kind solid-state sensing technology with no moving parts
 - Multipoint sealing mechanism that supersedes single surface seals
 - Rated at 2 million cycles, it will last 4 times longer than a standard pump switch
- Voltage: 120 VAC, 60 Hz
- Output Capacity (per outlet): ½ HP, 12 FLA, 15 amp max, 72 LRA
- Remote Alarm Contacts: Normally closed (open during alarm state) 30 V/DC @ 1 amp max
- Temperature Range: 32° F to 104° F (0° C to 40° C)
- Audible Alarm: 80 dB @ 10 ft.
- Enclosure: NEMA-1 UL94V-0 ABS
- Mounting Hardware (controller): (4) #10 Screws (not included)
- Mounting Dimensions (controller): 8.25" X 3.5"
- 3 year warranty



Now available
with optional
factory installed
Ethernet Module.



Ion® Endeavor

Smart Controller and Sensors



- Three model options
- First of a kind 115 or 230 volt standard plug in receptacle, dual pump run and alternating controller for residential and commercial applications
- Ion® sensors communicate with controller to provide controller based turn on level adjustment from 2.5" to 72" for optimal pump operation
- Track critical information through the panel based display, including switch failure, pump amp draw, water level, and more
- Wide range of communication options available

Patent No. 8,591,198 & 8,907,789 B2

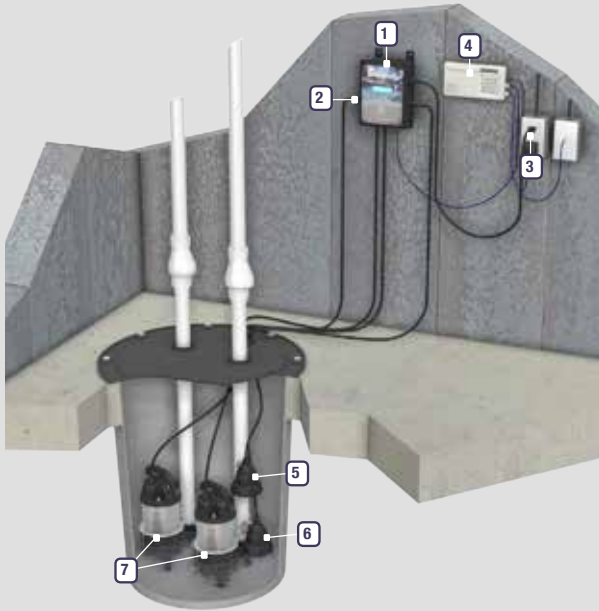


37 Forestwood Dr., Romeoville, IL 60446 www.ionproducts.net [815] 886-9200

Ion® Endeavor

Smart Controller and Sensors

Typical Installation Diagram



1. Ion® Endeavor
2. Pump outlets
3. Power cord
4. Dialer (optional)
5. High water sensor
6. Digital level sensor
7. Pumps (optional)

Controller Options

	Endeavor Power Plug Configuration	Dedicated Supporting Wall Receptacle Needed
Model 100-15 operates two (2) 120 VAC, single-phase pumps, up to 12 amps total	 115 V, 15 A	 115 V, 15 A
Model 100-20 operates two (2) 120 VAC, single-phase pumps, up to 16 amps total	 115 V, 20 A	 115 V, 20 A
Model 200-15 operates two (2) 208-240 VAC single-phase pumps, up to 12 amps total	 230 V, 15 A	 230 V, 15 A

System Specifications

- Featuring Ion® digital level sensors
 - First of its kind solid-state sensing technology with no moving parts
 - Multipoint sealing mechanism that supersedes single surface seals
 - Rated at 2 million cycles, it will last 4 times longer than a standard pump switch
- Simultaneously operates two (2) single-phase plug in pumps together when required
- Automatic pump alternation based on duty cycle and/or pump availability
- Clean & safe operation
- Microprocessor based process controls continually monitor system
- Dry digital contact for common alarm, allows remote monitoring
- Metropolitan's variety of optional com-devices allow many communications possibilities:
 - Ethernet Module: system status via web page and email or text message alerts
 - Ion Gateway®: Cellular based unit sends email or text message alerts
 - Telephone Dialer: Phone line unit sends voice message alerts
- 3 year warranty

Now available
 with optional
 factory installed
 Ethernet Module.



Ion® Endeavor BA33

All parts included to install a smart controller with sensors & pump



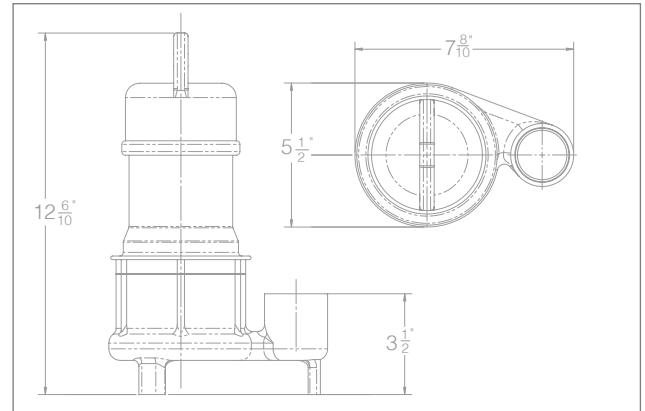
- First of a kind 115 volt standard plug in receptacle, dual pump run and alternating controller for residential and commercial applications
- Ion® sensors communicate with controller to provide controller based turn on level adjustment from 2.5" to 72" for optimal pump operation
- Track critical information through the panel based display, including switch failure, pump amp draw, water level and more
- Wide range of communication options available

Ion® Endeavor BA33

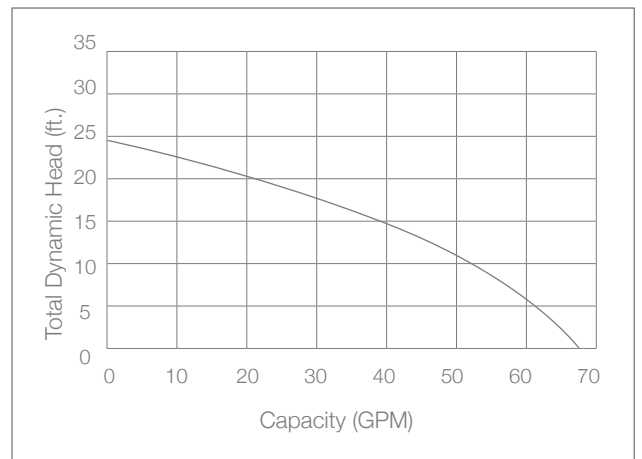
System Specifications

Typical Applications	<ul style="list-style-type: none"> • Basement sump • Dewatering
Maximum Capacity	Up to 68 GPM
Maximum Head	Up to 25'
Electrical Data	115 V, 1 Ø, 4.5 FLA, 60 Hz
Motor Data	1/3 HP, 3450 RPM
Recommended Minimum Basin Size	18" x 24"
Manual Operation	M: Manual
Materials of Construction	Cast iron & stainless steel
Impeller	Thermoplastic vortex
Power Cord	10' Standard
Discharge Size	1½" NPT
Solids Handling	½"

BA33 Sump Pump Dimensions



BA33 Sump Pump Performance



Features

- Energy efficient motor
- Carbon ceramic mechanical seal
- Thermal overload protection
- Ion® digital level control sensor has no moving parts (standard)
- Stainless steel screen prevents debris from entering the pump
- 3 year warranty

Now available
with optional
factory installed
Ethernet Module.



Ion® Endeavor BA50

All parts included to install a smart controller with sensors & pump



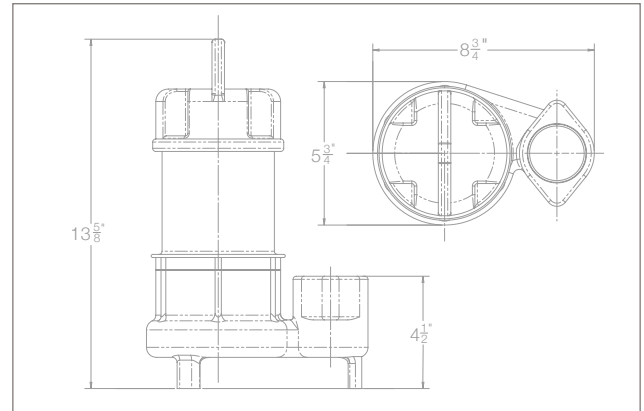
- First of a kind 115 volt standard plug in receptacle, dual pump run and alternating controller for residential and commercial applications
- Ion® sensors communicate with controller to provide controller based turn on level adjustment from 2.5" to 72" for optimal pump operation
- Track critical information through the panel based display, including switch failure, pump amp draw, water level and more
- Wide range of communication options available

Ion® Endeavor BA50

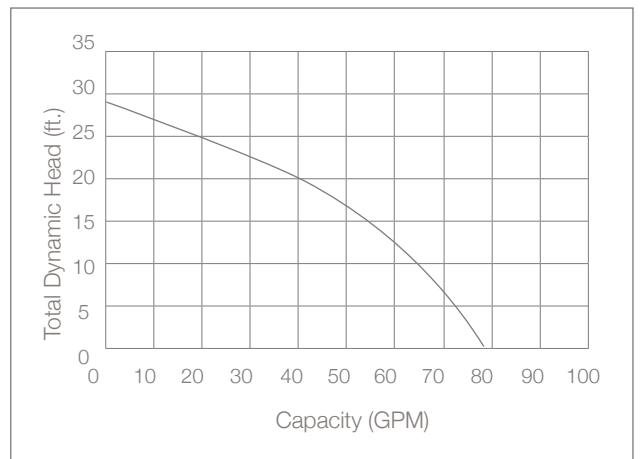
System Specifications

Typical Applications	<ul style="list-style-type: none"> • Basement sump • Dewatering
Maximum Capacity	Up to 78 GPM
Maximum Head	Up to 29'
Electrical Data	115 V, 1 Ø, 5.8 FLA, 60 Hz
Motor Data	½ HP, 3450 RPM
Recommended Minimum Basin Size	18" x 24"
Manual Operation	M: Manual
Materials of Construction	Cast iron & stainless steel
Impeller	Cast iron vortex
Power Cord	10' Standard (20' optional)
Discharge Size	2" NPT
Solids Handling	½"

BA50 Sump Pump Dimensions



BA50 Sump Pump Performance



Features

- Energy efficient motor
- Carbon ceramic mechanical seal
- Thermal overload protection
- Ion® digital level control sensor has no moving parts (standard)
- Stainless steel screen prevents debris from entering the pump
- 3 year warranty



StormPro 2100DC

Battery Backup System

- High quality DC pump capable of pumping over 2,100 gallons per hour
- Heavy duty adjustable vertical float switch for maximum reliability
- High output 8 amp charger unit with 5 charging stages
- Safe for use with AGM maintenance free batteries
- Built-in audible alarm and indicator lights for added protection
- Pump base keeps the pump off the bottom of the basin to avoid clogging from debris
- UL listings ensure reliability

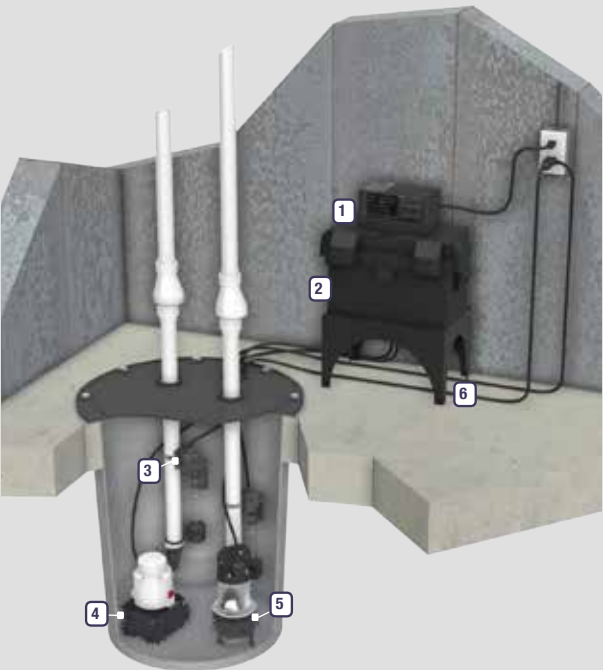


37 Forestwood Dr., Romeoville, IL 60446 www.ionproducts.net (815) 886-9200

StormPro® 2100DC

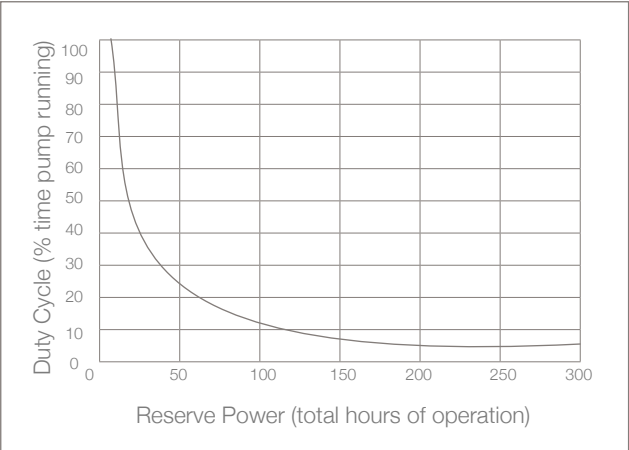
Battery Backup System

Typical Installation Diagram



1. 8 amp charger unit
2. Battery box
3. Backup switch
4. 12 volt backup pump
5. Primary sump pump (not included)
6. Stand (optional)

System Performance



System Specifications

- Includes
- 12 volt DC pump • Pump base
 - Battery box • Heavy duty float switch
 - 8 amp charger with built-in audible alarm and status lights

Input Voltage	AC
Output Voltage	DC
Pump Type	12 volt DC submersible
Capacity	35 GPM / 2,100 GPH @ 10'
Installation	Floor mount
Options	Stand, battery add-on kit
Warranty	3 years



30ACi+

Battery Backup System

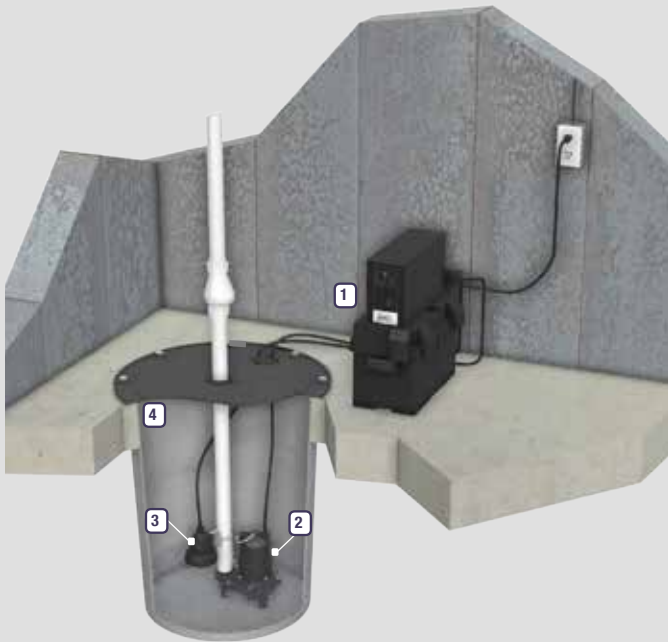
- Fully automatic auxiliary power source
- Backup system runs on AC or DC power
- Runs the same 1/3 HP pump in AC or DC mode
- Ion+® digital level control sensor with integrated alarms



30ACi+

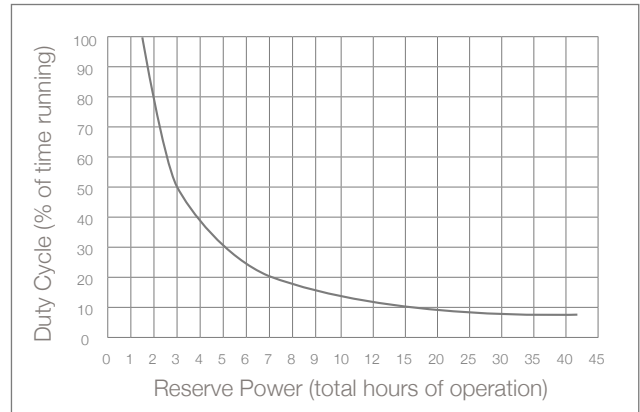
Battery Backup System

Typical Installation Diagram

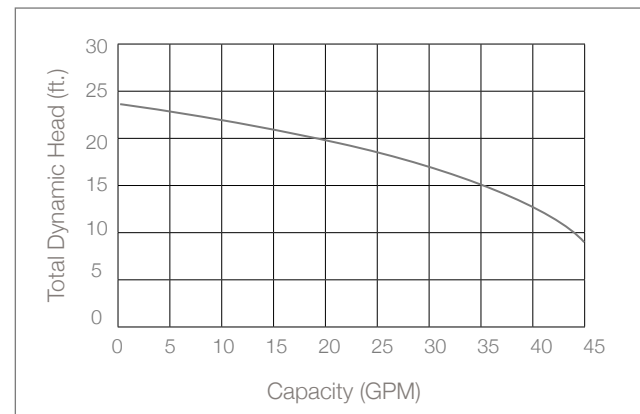


1. Battery box with inverter
2. 1/3 HP Ion® StormPro® WC33 sump pump
3. Ion+® digital level control/alarm sensor
4. Recommended minimum basin size: 18" x 24" (not included)

System Performance



Pump Performance



System Specifications

- 1/3 HP pump with PSC, energy efficient motor: 4.0 amps
- Up to 45 GPM
- Fully automatic, converts 12 volt DC to 120 volt AC when utility power is lost
- Runs 1/3 HP pump on AC or DC power
- Inverter has digital display, tells status of system at all times
- Requires one 12 volt deep cycle AGM battery (battery is NOT included)
- Non-corrosive battery enclosure
- Includes piggyback Ion+® digital level control/alarm sensor with no moving parts
 - Built-in alarm and monitoring system with Power, System and High Water LEDs and audible alarm
 - Dry contacts to connect to a monitoring device via an RJ11 connection
 - Rated at 2 million cycles, it will last 4 times longer than a standard pump switch
- Quick and easy installation
- 3 year warranty

Revised: 1.12.17 14:19



30ACi Deluxe

Battery Backup System

- Fully automatic auxiliary power source
- Backup system runs on AC or DC power
- Runs the same 1/3 HP pump with power on or off
- Ion Genesis® controller monitors all pump activity
- Full digital display on inverter and controller
- Ion® digital level sensors have no moving parts



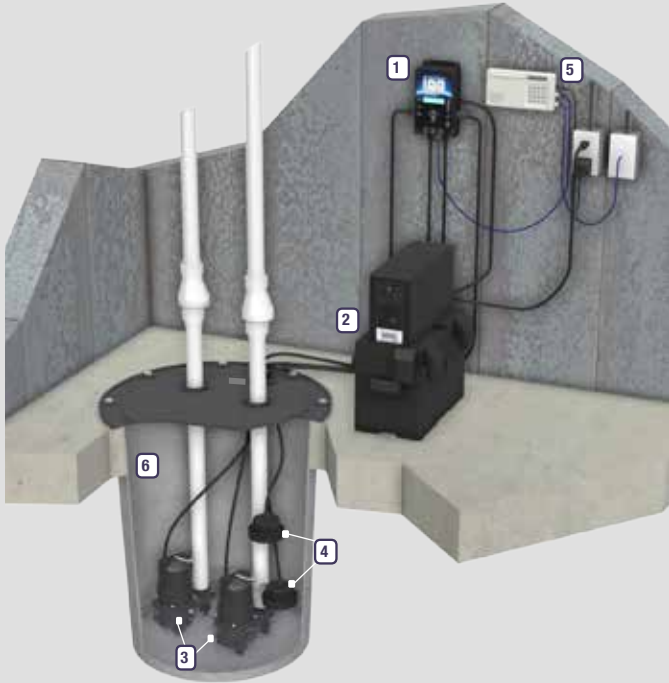
37 Forestwood Dr., Romeoville, IL 60446 www.ionproducts.net (815) 886-9200

Patents Pending, Patent No. 8,591,198

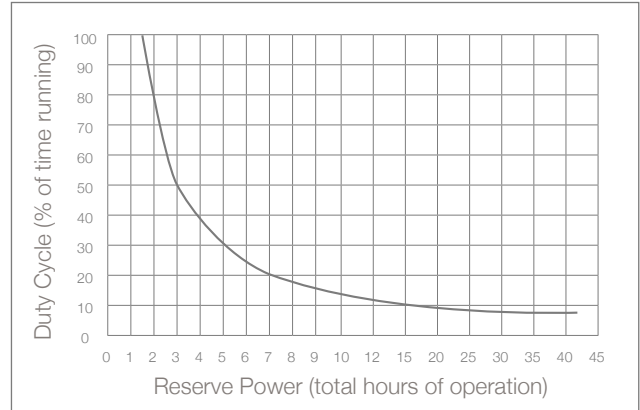
30ACi Deluxe

Battery Backup System

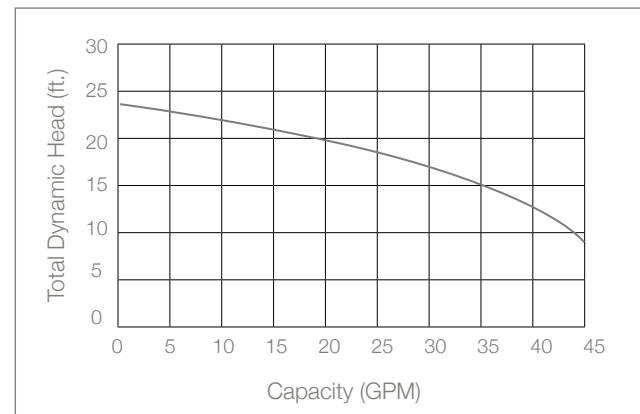
Typical Installation Diagram



System Performance



Pump Performance



System Specifications

- 1/3 HP pump with PSC, energy efficient motor: 4.0 amps
- Up to 45 GPM
- Fully automatic, converts 12 volt DC to 120 volt AC when power is off
- Ion Genesis® controller alternates each pump and alarms
- Runs 1/3 HP pump on AC or DC power
- Inverter has digital display, tells status of system at all times
- Uses one 12 volt deep cycle AGM battery (battery is NOT included)
- Non-corrosive battery enclosure
- Includes piggyback Ion® digital level control sensors with no moving parts
 - First of its kind solid-state sensing technology with no moving parts
 - Multipoint sealing mechanism that supersedes single surface seals
 - Rated at 2 million cycles, it will last 4 times longer than a standard pump switch
- Quick and easy installation
- 3 year warranty



35ACi+

Battery Backup System

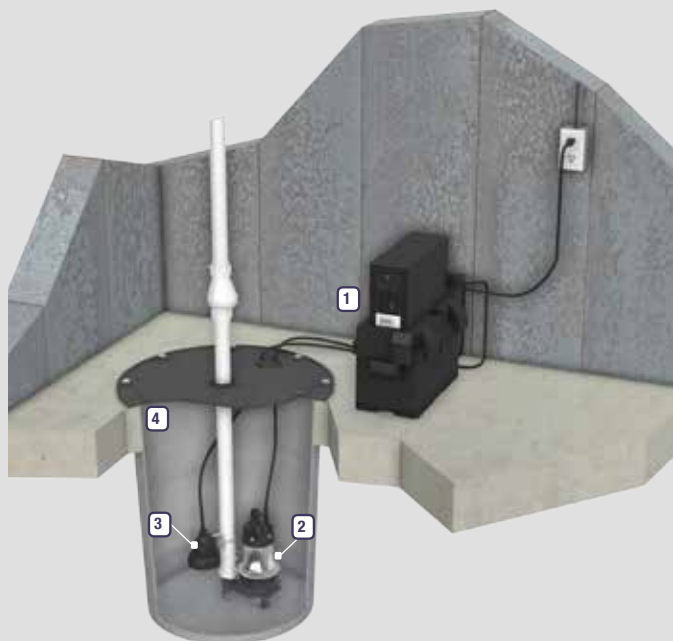
- Fully automatic auxiliary power source
- Backup system runs on AC or DC power
- Runs the same 1/3 HP pump in AC or DC mode
- Ion+® digital level control sensor with integrated alarms



35ACi+

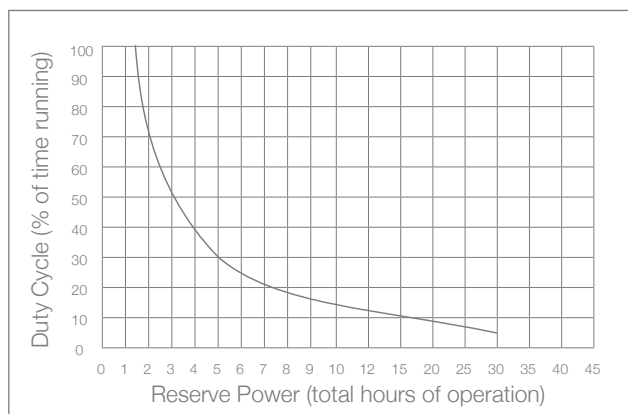
Battery Backup System

Typical Installation Diagram

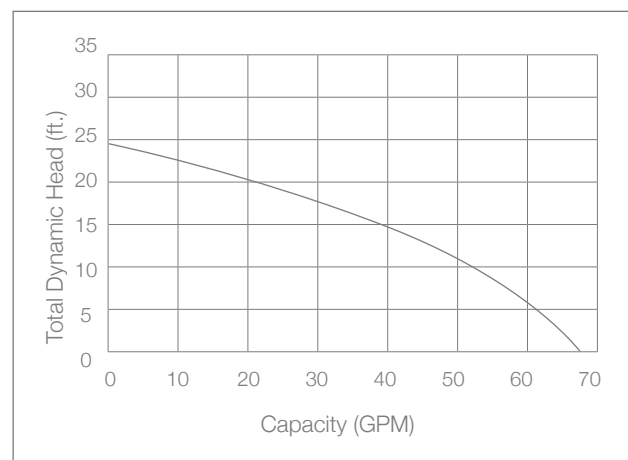


1. Battery box with inverter
2. Ion® StormPro® sump pump
3. Ion+® digital level control/alarm sensor
4. Recommended minimum basin size: 18" x 24" (not included)

System Performance



Pump Performance



System Specifications

- 1/3 HP pump with PSC, energy efficient motor: 4.5 amps
- Up to 68 GPM
- Fully automatic, converts 12 volt DC to 120 volt AC when utility power is lost
- Runs 1/3 HP pump on AC or DC power
- Inverter has digital display, tells status of system at all times
- Requires one 12 volt deep cycle AGM battery (battery NOT included)
- Non-corrosive battery enclosure
- Includes piggyback Ion+® digital level control/alarm sensor with no moving parts
 - Built-in alarm and monitoring system with Power, System and High Water LEDs and audible alarm
 - Dry contacts to connect to a monitoring device via an RJ11 connection
 - Rated at 2 million cycles, it will last 4 times longer than a standard pump switch
- Quick and easy installation
- 3 year warranty

Revised: 02.14.17 13:33



35ACi Deluxe

Battery Backup System

- Fully automatic auxiliary power source
- Backup system runs on AC or DC power
- Runs the same 1/3 HP pump with power on or off
- Ion Genesis® controller monitors all pump activity
- Full digital display
- Ion® digital level sensors have no moving parts



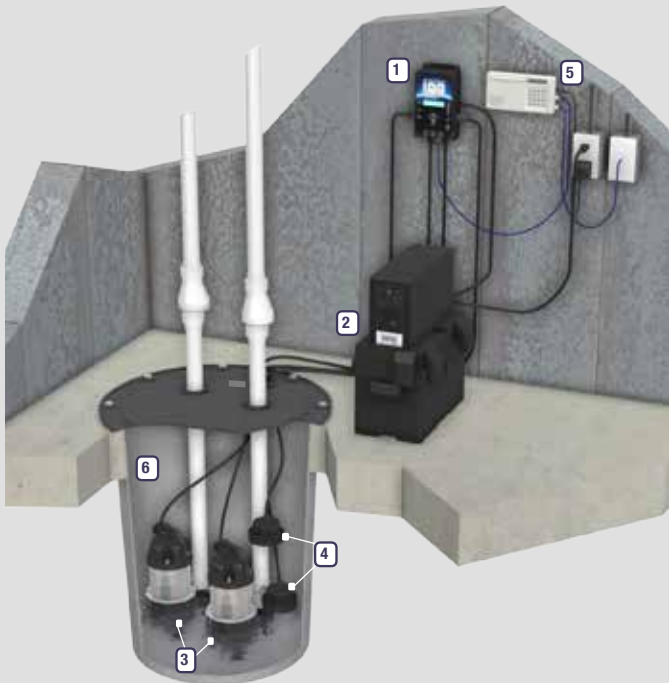
37 Forestwood Dr., Romeoville, IL 60446 www.ionproducts.net [815] 886-9200

Patents Pending, Patent No. 8,591,198

35ACi Deluxe

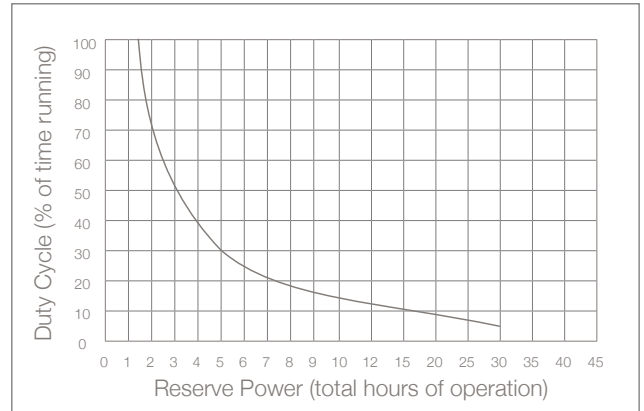
Battery Backup System

Typical Installation Diagram

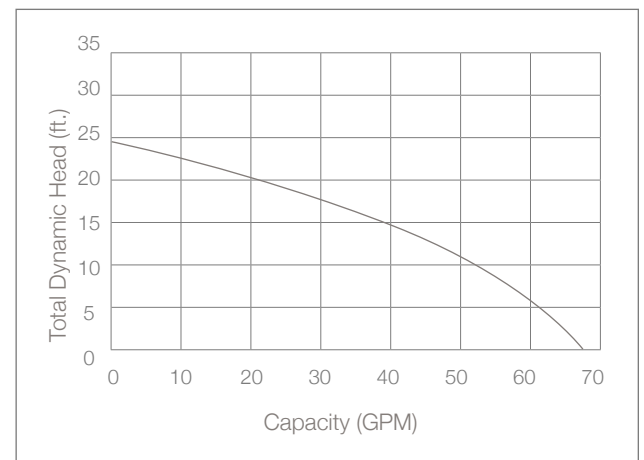


1. Ion Genesis® controller
2. Battery box with inverter
3. Ion® StormPro® sump pumps
4. Ion® digital level control sensors
5. Phone dialer (optional)
6. Recommended minimum basin size:
18" x 24" (not included)

System Performance



Pump Performance



System Specifications

- 1/3 HP pump with PSC, energy efficient motor: 4.5 amps
- Up to 68 GPM
- Fully automatic, converts 12 volt DC to 120 volt AC when power is off
- Runs 1/3 HP pump on AC or DC power
- Inverter has digital display, tells status of system at all times
- Uses one 12 volt deep cycle AGM battery (battery NOT included)
- Non-corrosive battery enclosure
- Includes piggyback Ion® digital level control switch with no moving parts
- Quick and easy installation
- 3 year warranty

Revised: 02.14.17



55ACi+

Battery Backup System

- Fully automatic auxiliary power source
- Backup system runs on AC or DC power
- Runs the same ½ HP pump in AC or DC mode
- Ion+® digital level control sensor with integrated alarms



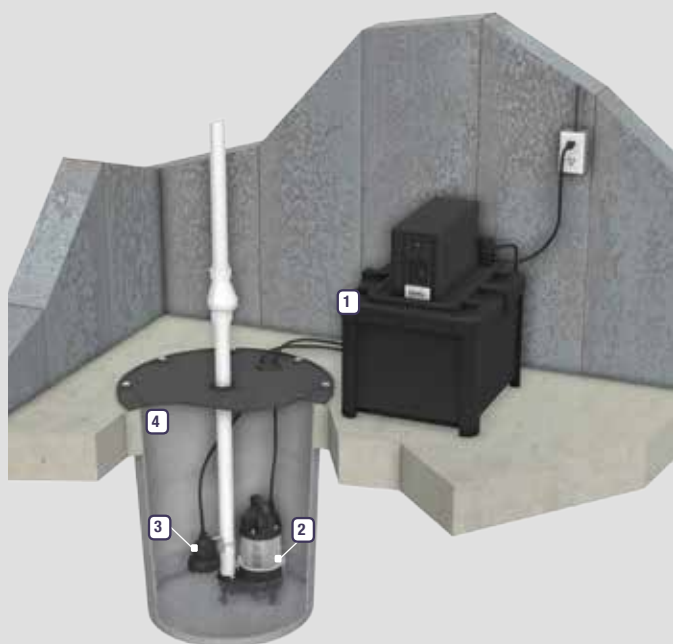
37 Forestwood Dr., Romeoville, IL 60446 www.ionproducts.net [815] 886-9200

Patents Pending, Patent No. 8,591,198

55ACi+

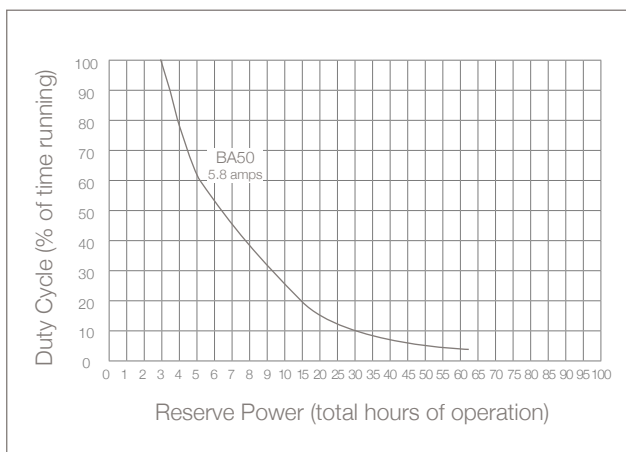
Battery Backup System

Typical Installation Diagram

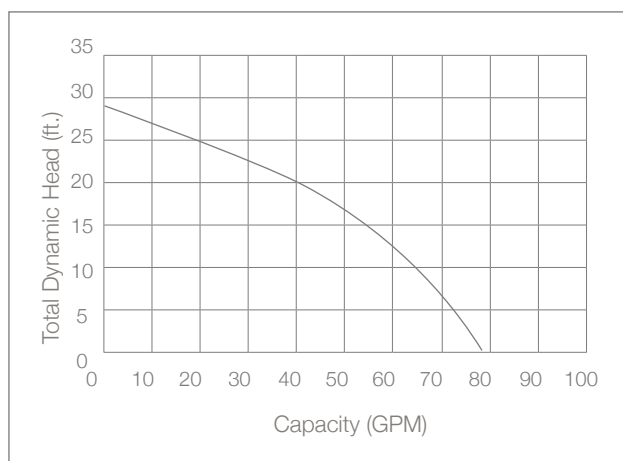


1. Battery box with inverter
2. Ion® StormPro® sump pump
3. Ion+® digital level control/alarm sensor
4. Recommended minimum basin size:
18" x 24" (not included)

System Performance



Pump Performance



System Specifications

- ½ HP pump with PSC, energy efficient motor: 5.8 amps
- Up to 78 GPM
- Fully automatic, converts 24 volt DC to 120 volt AC when utility power is lost
- Runs ½ HP pump on AC or DC power
- Inverter has digital display, tells status of system at all times
- Requires two 12 volt deep cycle AGM batteries (batteries are NOT included)
- Non-corrosive battery enclosure
- Includes piggyback Ion+® digital level control/alarm sensor with no moving parts
 - Built-in alarm and monitoring system with Power, System and High Water LEDs and audible alarm
 - Dry contacts to connect to a monitoring device via an RJ11 connection
 - Rated at 2 million cycles, it will last 4 times longer than a standard pump switch
- Quick and easy installation
- 3 year warranty



55ACi Deluxe

Battery Backup System

- Fully automatic auxiliary power source
- Backup system runs on AC or DC power
- Runs the same pump with power on or off
- Ion Genesis® controller monitors all pump activity
- Full digital display
- Ion® digital level sensors have no moving parts



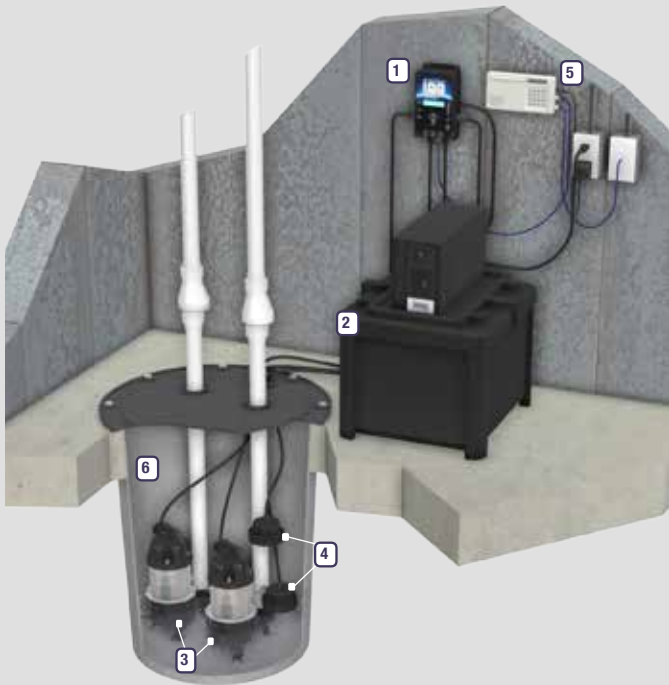
37 Forestwood Dr., Romeoville, IL 60446 www.ionproducts.net [815] 886-9200

Patents Pending, Patent No. 8,591,198

55ACi Deluxe

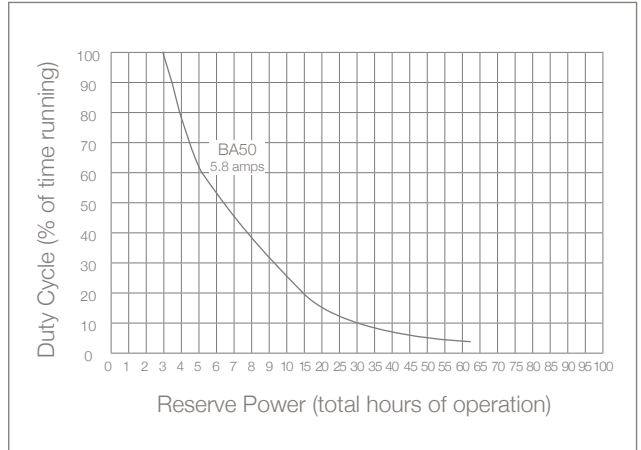
Battery Backup System

Typical Installation Diagram

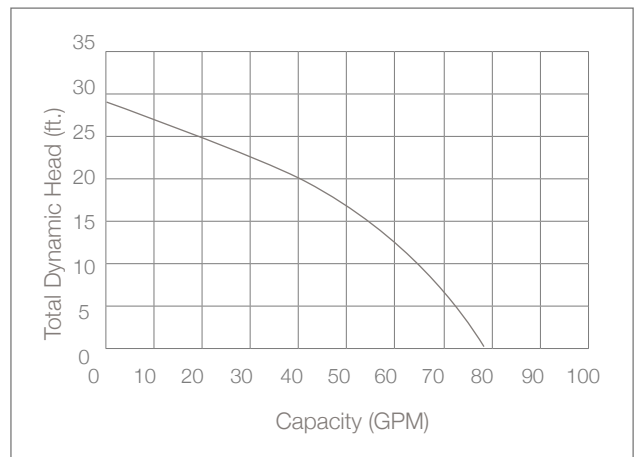


1. Ion Genesis® controller
2. Battery box with inverter
3. Ion® StormPro® sump pumps
4. Ion® digital level control sensors
5. Phone dialer (optional)
6. Recommended minimum basin size:
18" x 24" (not included)

System Performance



Pump Performance



System Specifications

- Fully automatic, converts 24 volt DC to 120 volt AC when power is off
- Runs pump on AC or DC power
- Inverter has digital display, tells status of system at all times
- Requires two 12 volt deep cycle AGM batteries (batteries are NOT included)
- Non-corrosive battery enclosure
- Ion Genesis® controller alternates each pump and alarms
- Ion Genesis® includes piggyback Ion® digital level control sensors with no moving parts
 - First of its kind solid-state sensing technology with no moving parts
 - Multipoint sealing mechanism that supersedes single surface seals
 - Rated at 2 million cycles, it will last 4 times longer than a standard pump switch
- Quick and easy installation
- 3 year warranty



Sumpro®

Battery Backup System

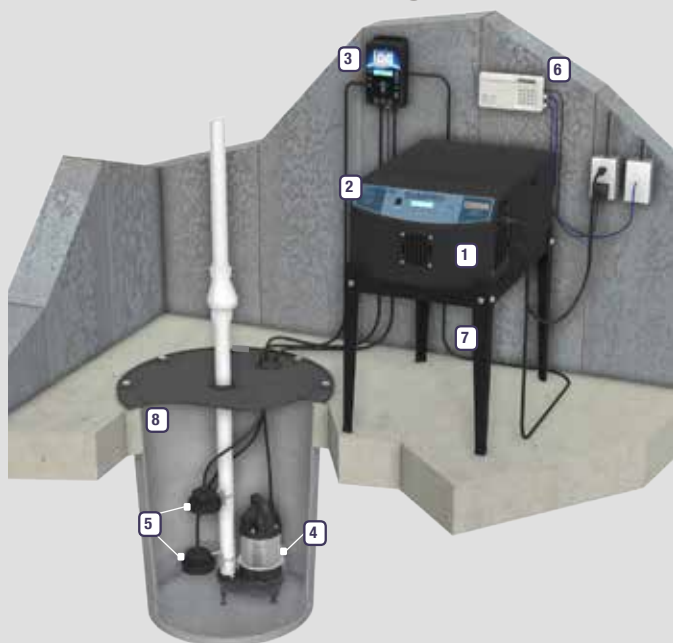


- Smaller footprint & lighter than original Sumpro® with quieter operation
- Easy to read LCD screen for real time monitoring
- Alarm contact for remote monitoring and notification
- Solar & wind inputs for battery charging
- Improved charging circuit
- High inrush capability

Sumpro®

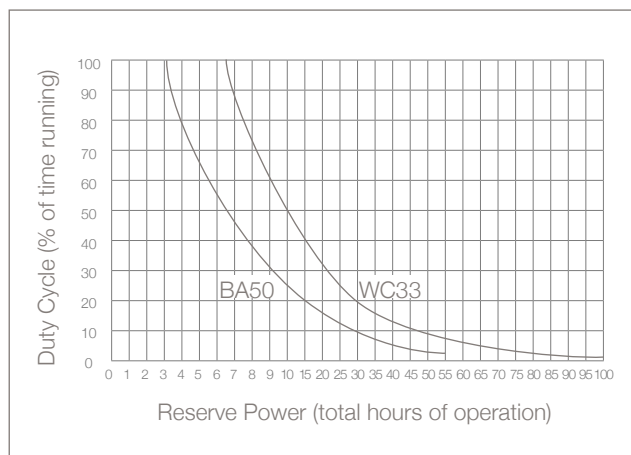
Battery Backup System

Typical Installation Diagram



1. Sumpro®
2. Wind & solar inputs
3. Ion Genesis® (optional)
4. Sump pump (optional)
5. Ion Genesis® sensors (optional)
6. Phone dialer (optional)
7. Stand (optional)
8. Recommended minimum basin size:
18" x 24" (not included)

System Performance



Performance curve results using a 1/3 and 1/2 HP pump with (2) fully charged Power+ 100 amp hour batteries.

Dimensions



System Specifications

System Model	Sumpro® Model 100
Includes	<ul style="list-style-type: none"> • 15 amp inverter with status lights • Dual battery box with fuse bar
Input Voltage	120 VAC/24VDC (2 batteries, sold separately), 60 Hz, 12 amp
Output Voltage	120 VAC, 12 amp
Pump Type	Any 115 volt pump up to 12 amps (not included)
Options	Stand, battery add-on kit, Ion Genesis®
Weight	60 lbs
Warranty	3 years



Sumpro® Platinum

Battery Backup System

- Runs on either AC or DC power
- Supplied with two ¾ HP, 115 volt sump pumps
- Ion Genesis® controller monitors all pump activity, including pump running current, pump trending, and self testing without having to access the basin
- Ion Genesis® sensors have no moving parts or pieces to fail and will far outlast common switch types
- Can be installed as a backup or primary pump

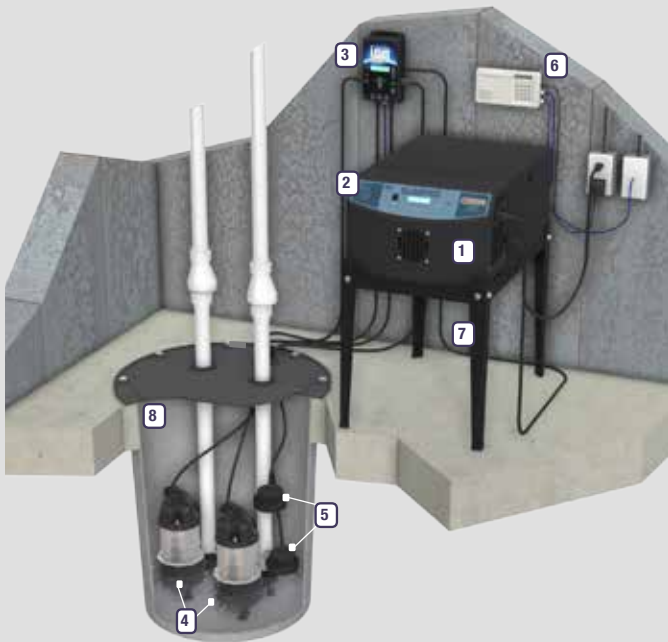


Patents Pending, Patent No. 5,508,905 & 8,591,198
37 Forestwood Dr., Romeoville, IL 60446 www.ionproducts.net [815] 886-9200

Sumpro® Platinum

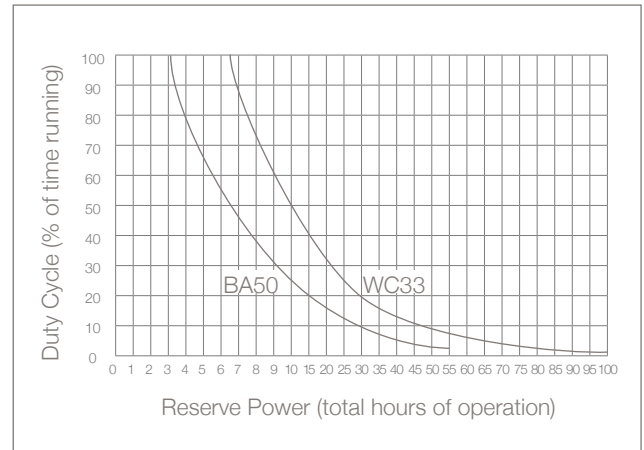
Battery Backup System

Typical Installation Diagram



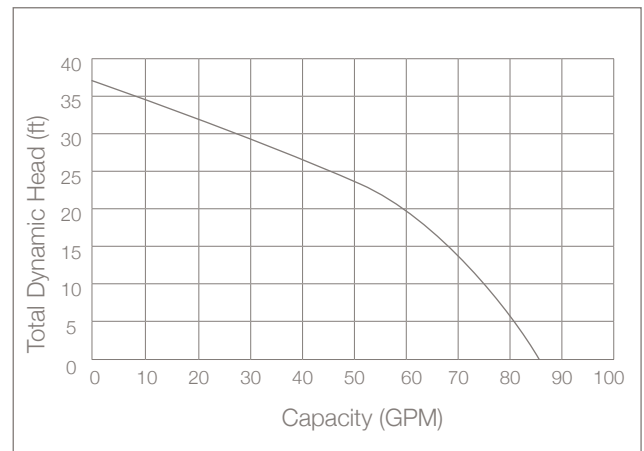
1. Sumpro®
2. Wind & solar inputs
3. Ion Genesis®
4. Dual ¼ HP pumps
5. Ion Genesis® sensors
6. Phone dialer (optional)
7. Stand (optional)
8. Recommended minimum basin size: 18" x 24" (not included)

System Performance



Performance curve results using a 1/3 and 1/2 HP pump with (2) fully charged Power+ 100 amp hour batteries.

Pump Performance



System Specifications

- Sumpro® Model 100 inverter rated for 15 amps
- Input Voltage: AC
- Output Voltage: DC / AC
- Includes (2) ¼ HP pumps, rated up to 85 GPM each, and an Ion Genesis® controller
- Options: Stand, battery add-on kit, automatic phone dialer
- 3 year warranty



JSP11

Preassembled Sump & Battery Backup System

- All-in-one system with primary and backup pump
- Comes completely assembled with pumps and valves pre-plumbed
- Simply drop into your existing basin and make one discharge connection
- 3 year warranty



Preassembled Sump & Battery Backup System

Primary Pump Specifications

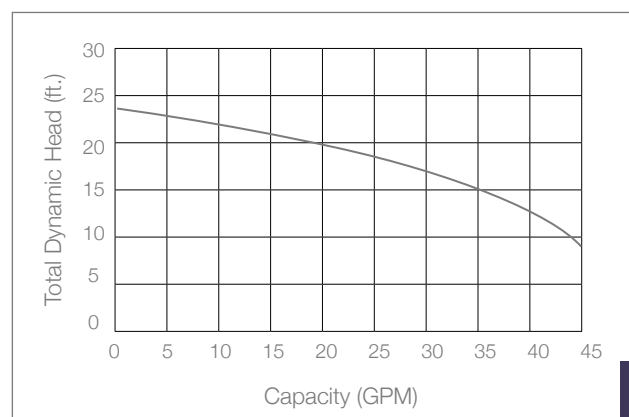
Typical Applications	<ul style="list-style-type: none"> • Residential sump • Dewatering
Maximum Capacity	Up to 45 GPM
Maximum Head	Up to 24'
Electrical Data	115 V, 1 Ø, 4 FLA, 60 Hz
Motor Data	1/3 HP, PSC, high efficiency motor with thermal overload protection, 3450 RPM
Recommended Minimum Basin Size	18" x 24"
Automatic Operation	i: Ion Digital Level Control
Materials of Construction	Cast iron and engineered thermoplastic
Impeller	Thermoplastic vortex
Power Cord	10' Standard
Discharge	1½" NPT
Solids Handling	½"

Typical Installation Diagram



1. Battery box with DC charger
2. 1/3 HP primary pump
3. Ion® digital level control switch
4. Backup pump
5. Backup vertical switch
6. Stand (optional)

Pump Performance



Battery Backup System Features

- Primary pump with high efficiency oil filled motor that uses half the power of most 1/3 HP pumps
- Piggyback Ion digital level control primary switch with no moving parts
- High quality 2100DC battery backup pump rated for 2,100 GPH
- Backup pump base keeps the pump off the bottom of the basin to avoid clogging from debris
- Heavy duty adjustable vertical backup float switch for maximum reliability
- Solid state 8 amp charger unit with 5 charging stages automatically switches to DC mode when power is out
- Built-in audible alarm and indicator lights on charger for added protection
- Uses one 12 volt deep cycle AGM battery (battery is NOT included)
- 1½" Sch. 40 PVC piping
- Check valve on each pump
- 3 year warranty



JSP III

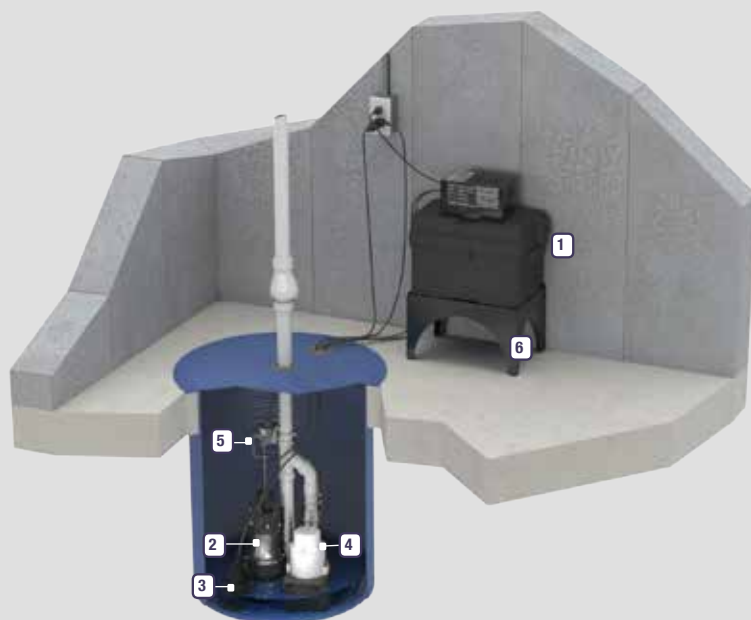
Preassembled Sump & Battery Backup System

- All-in-one system with primary and backup pump
- Comes completely assembled with pumps and valves pre-plumbed
- Simply drop into your existing basin and make one discharge connection
- 3 year warranty



Preassembled Sump & Battery Backup System

Typical Installation Diagram

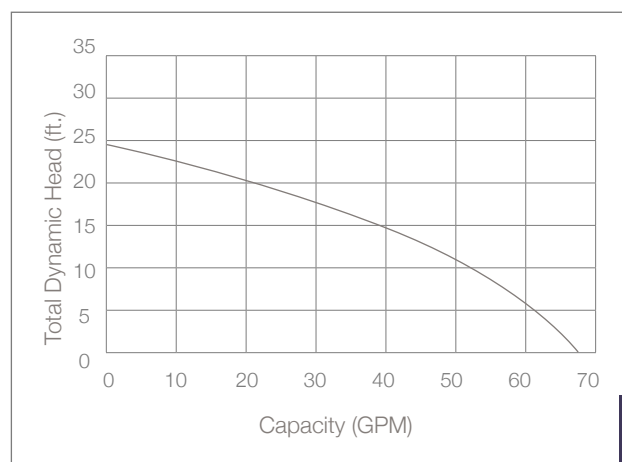


1. Battery box with DC charger
2. 1/3 HP primary pump
3. Ion® digital level control switch
4. Backup pump
5. Backup vertical switch
6. Stand (optional)

Primary Pump Specifications

Typical Applications	<ul style="list-style-type: none"> • Basement sump • Dewatering
Maximum Capacity	Up to 68 GPM
Maximum Head	Up to 25'
Electrical Data	115 V, 1 Ø, 4.5 FLA, 60 Hz
Motor Data	1/3 HP, 3450 RPM
Recommended Minimum Basin Size	18" x 24"
Automatic Operation	i: Ion Digital Level Control
Materials of Construction	Cast iron & stainless steel
Impeller	Thermoplastic vortex
Power Cord	10' Standard
Discharge Size	1½" NPT
Solids Handling	½"

Primary Pump Performance



Battery Backup System Features

- Primary pump with high efficiency oil filled motor that uses half the power of most 1/3 HP pumps
- Piggyback Ion digital level control primary switch with no moving parts
- High quality 2100DC battery backup pump rated for 2,100 GPH
- Backup pump base keeps the pump off the bottom of the basin to avoid clogging from debris
- Heavy duty adjustable vertical backup float switch for maximum reliability
- Solid state 8 amp charger unit with 5 charging stages automatically switches to DC mode when power is out
- Built-in audible alarm and indicator lights on charger for added protection
- Uses one 12 volt deep cycle AGM battery (battery is NOT included)
- 1½" Sch. 40 PVC piping
- Check valve on each pump
- 3 year warranty



MPPII

Power Pac System

- (2) 1/3 HP pumps with PSC motor
- Recommended minimum basin size: 18 x 24"
- Includes Ion Genesis® controller, 1 1/2" check valve and 1 1/2" Sch. 40 PVC piping
- Every cycle alternates to the other pump
- Low amp draw pumps 4 amps
- Each pump rated up to 2700 GPH
- Factory built; easy and quick to install
- Built-in alarm system
- 3 year warranty



37 Forestwood Dr., Romeoville, IL 60446 www.ionproducts.net [815] 886-9200

System Specifications

- Typical Applications
- Basement sump
 - Dewatering
 - Septic tank effluent

Maximum Capacity Up to 45 GPM

Maximum Head Up to 24'

Electrical Data 115 V, 1 Ø, 4 FLA, 60 Hz

Motor Data 1/3 HP, 3450 RPM

Recommended Minimum Basin Size 18" x 24"

Manual Operation M: Manual

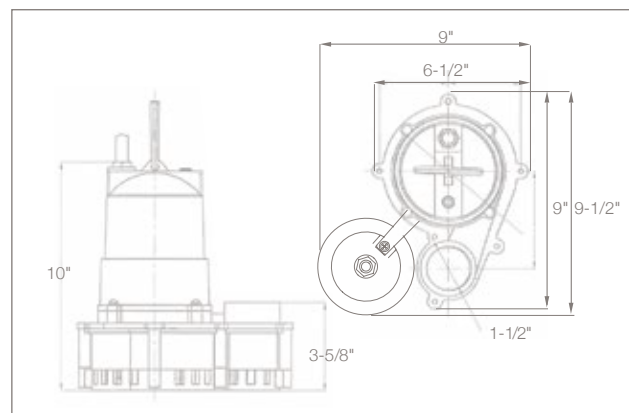
Materials of Construction Cast iron & engineered thermoplastic

Power Cord 10' Standard

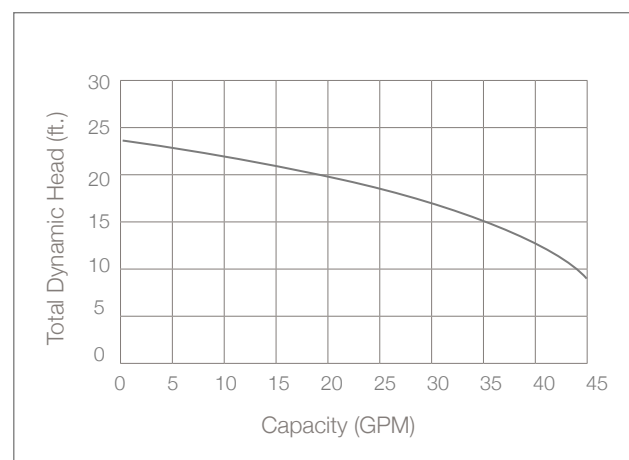
Discharge 1 1/2" NPT

Solids 1/2"

WC33 Sump Pump Dimensions



WC33 Sump Pump Performance



Features

- Carbon ceramic mechanical seal
- Oil-filled high efficiency PSC motor that uses half the AC power of most 1/3 HP pumps
- Ion® digital level control sensors have no moving parts (standard)
- 3 year warranty



MPPIII

Power Pac System For Sumps

- (2) 1/3 HP pumps with PSC motor
- Recommended minimum basin size: 18 x 24"
- Includes Ion Genesis® controller, 1 1/2" check valve and 1 1/2" Sch. 40 PVC piping
- Every cycle alternates to the other pump
- Low amp draw pumps 4.5 amps
- Each pump rated up to 3180 GPH
- Factory built; easy and quick to install
- Built-in alarm system
- 3 year warranty



37 Forestwood Dr., Romeoville, IL 60446 www.ionproducts.net [815] 886-9200

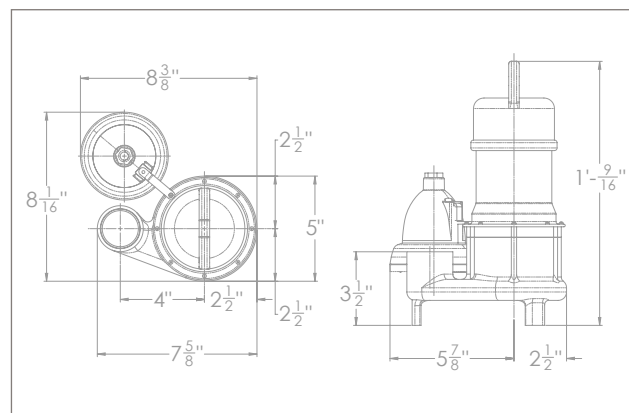
MPPIII

BA33 Sump Pumps

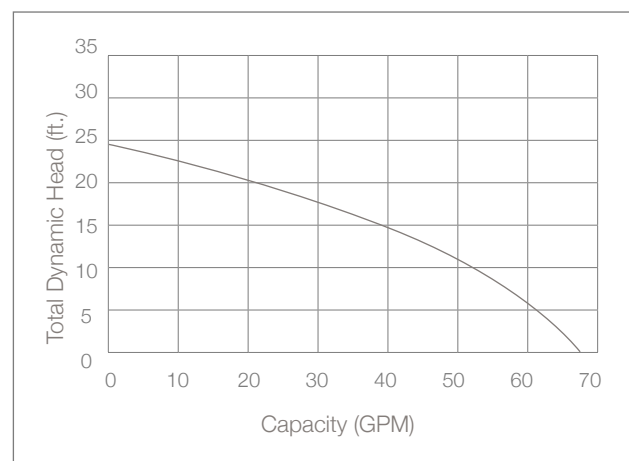
System Specifications

Typical Applications	<ul style="list-style-type: none"> Basement sump Dewatering
Maximum Capacity	Up to 68 GPM
Maximum Head	Up to 25'
Electrical Data	115 V, 1 Ø, 4.5 FLA, 60 Hz
Motor Data	1/3 HP, 3450 RPM
Recommended Minimum Basin Size	18" x 24"
Materials of Construction	Cast iron & stainless steel
Impeller	Thermoplastic vortex
Power Cord	10' Standard
Discharge Size	1½" NPT
Solids Handling	½"

Pump Dimensions



Pump Performance



Features

- Thermal overload protection
- Energy efficient motor
- Carbon ceramic mechanical seal
- Stainless steel screen prevents debris from entering the pump
- 3 year warranty



Power+

Maintenance Free AGM Battery

Power+ maintenance free batteries are revolutionizing the way we power our backup systems. Simply connect a battery or batteries to your backup system without having to perform monthly maintenance. The Power+ battery is completely sealed and spill-proof with no risk of exposure to hazardous chemicals. It is safe for standard shipping anywhere in the U.S.



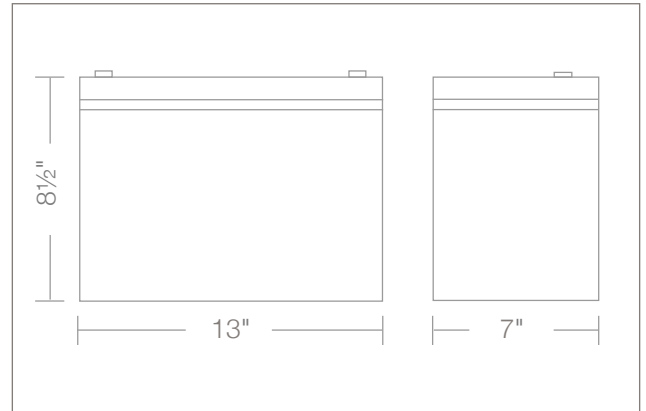
Power+

Maintenance Free AGM Battery

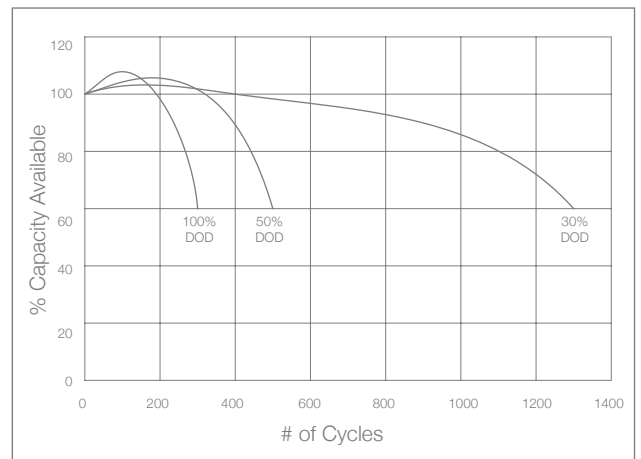
System Specifications

Item Number	P20397
Nominal Voltage	12 Volt
10 Hr Rate Ah	120 Ah
Model	31P-36
Size L x W x H	13" X 7" X 8½"
Weight	70 lbs
Terminal	Type B threaded copper
Bolt Size	M6 bolt

Dimensions



Power+ Performance



Features

- Maintenance free
- Lasts twice as long as typical batteries
- Completely sealed and spill-proof with no exposure to hazardous chemicals
- Safe for standard shipping in the USA
- Works with virtually all types of backup systems
- Performs up to 35% better than standard deep cycle batteries
- 3 year warranty

Battery Add On Kits

12 Volt Kit

- Can be used with any 12 volt battery backup system
- Adding a second battery doubles run time
- Includes 12 volt group 27 or 31 single battery box with lid and 8 AWG (+) Positive and (-) Negative battery cables



24 Volt Kit

- Can be used with any 24 volt battery backup system
- Adding a second bank of batteries doubles run time
- Heavy duty plastic enclosure
- Includes 24 volt group 27 and 31 double battery box with lid, 8 AWG (+) Positive and (-) Negative battery cables, and 80 Amp fuse link



Automatic Dialer

Alarm Alert System

- Designed to be connected to our Ion Genesis® controller or home security system
- Easily set to call up to 9 different numbers to alert you to an alarm condition



Stands

12 Volt

- Keeps battery backup systems and batteries safe by elevating off the ground
- Heavy duty epoxy coated steel construction for durability
- For use with 12 volt group 27 and 31 battery boxes
- Works with almost all types of battery backup systems

Sumpro®

- Designed specifically for Sumpro®, and Sumpro® Platinum battery backup systems
- Heavy duty epoxy coated construction for durability
- Keeps Sumpro® and batteries safe by elevating off the ground
- Rubber feet avoid surface scratching



Take Control.
ion
Packages



Under Sink Basin Package

All parts included to install an under sink sump system

Ordering PN: MPK20293

1. WC33V With Vertical Switch
2. 1½" Check Valve
3. 1½" x 12" Sch. 40 PVC
Discharge Pipe
4. Poly Water Box With Cover



37 Forestwood Dr., Romeoville, IL 60446 www.ionproducts.net [815] 886-9200

WC33V

Sump Pump

System Specifications

- Typical Applications
- Basement sump
 - Dewatering
 - Septic tank effluent

Maximum Capacity Up to 45 GPM

Maximum Head Up to 24'

Electrical Data 115 V, 1 Ø, 4 FLA, 60 Hz

Motor Data 1/3 HP, 3450 RPM

Automatic Operation V: Vertical switch

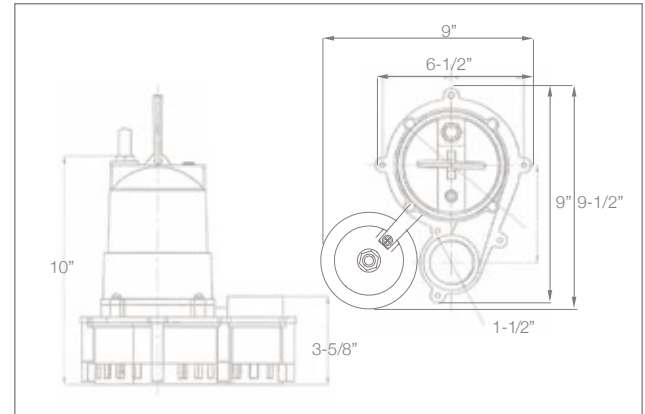
Materials of Construction Cast iron & engineered thermoplastic

Power Cord 10' Standard

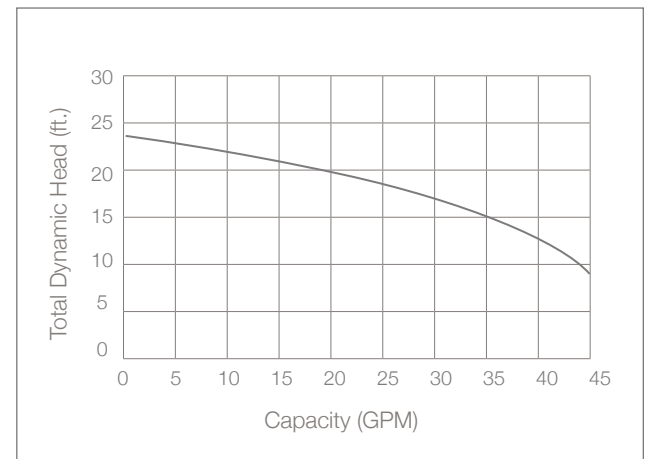
Discharge 1 1/2" NPT

Solids 1/2"

Pump Dimensions



Pump Performance



Features

- Carbon ceramic mechanical seal
- Oil-filled high efficiency PSC motor that uses half the AC power of most 1/3 HP pumps
- 3 year warranty

Take Control.
ion
Packages



Triple Poly Basin System 18" X 39"

Ordering PNs:

North Side Vents: TB1839TN

South Side Vents: TB1839TS

Designed to help garage areas and other facilities handle volatile wastes that they generate. Separates volatile wastes as they pass through the system of baffles and rise to the surface (meeting IL code). Includes three black epoxy-coated solid steel covers, cast iron inlet and discharge.

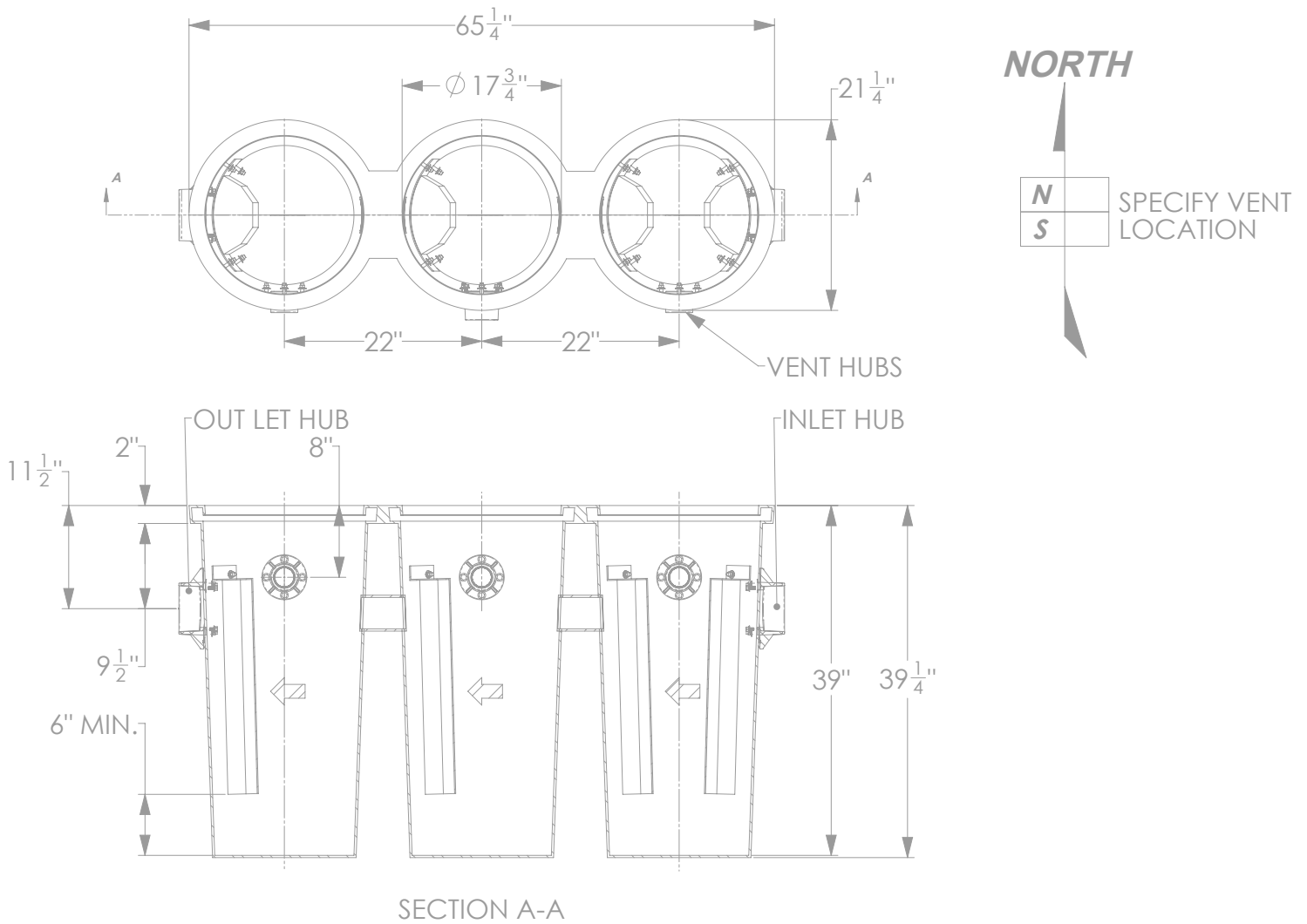
Larger sizes available in fiberglass. Please contact your Salesperson for more information.



37 Forestwood Dr., Romeoville, IL 60446 www.ionproducts.net [815] 886-9200

Triple Poly Basin System

18" X 39"



Features

- System of baffles
- Meets IL code
- Black epoxy-coated solid steel covers
- Cast iron inlet and discharge
- Larger sizes available in fiberglass
- 3 year warranty

 **Take Control.®**

ION®

Technologies

37 Forestwood Dr. Romeoville, IL 60446
www.ionproducts.net ■ (815) 886 - 9200