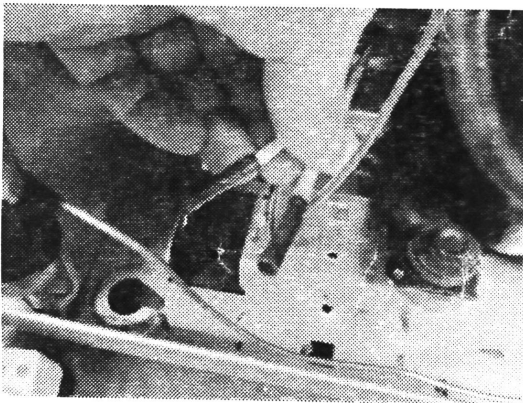


Instructions for Installing the Compressor Harness Adapter

Purpose: To be used on units which possess a machine harness mating to a compressor using discreet electrical components or an older combo device being replaced by a compressor with start package electrical type components requiring a molex type connector.

1. Locate the harness adapter, butt connectors and heat shrink tubing that is included in the compressor kit.
2. Cut the existing connectors off of the unit's compressor wires and install the butt terminals provided. *(see below)*

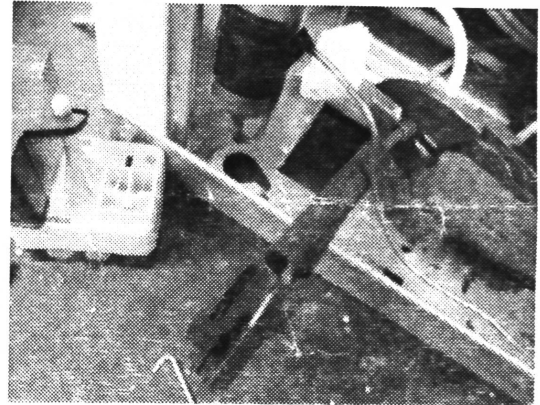


3. Locate the harness adapter provided with the compressor kit and slip the provided heat shrink tubing over the wires of the harness adapter prior to installing.

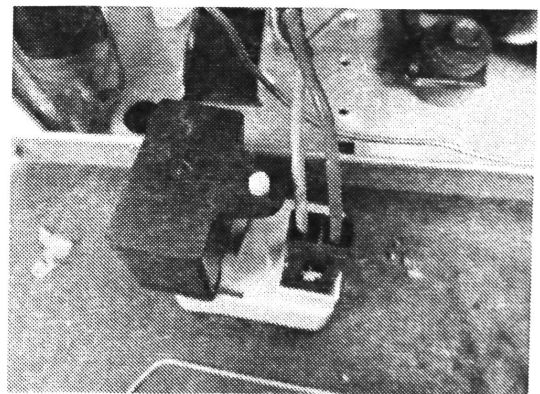
Instruction Sheet 5304491945 rev
May 28 2013

(Harness Adapter 297177300) (Heat Shrink Sleeves- 242158501)-2ea. (Butt Connectors- K1167951)-2ea.

4. Insert the wires of the harness adapter into the butt connectors and crimp with tool. *(see below)*
(On 115v units the red and blue wires of the unit should match the red and blue wires of the harness adapter)



5. Connect the molex connector to the compressor controller making sure the tab snaps into place.



Instructions for Installing the Compressor Harness Adapter

6. Install the controller on the compressor making sure that the compressor clip is in place. *(see below)*

