

MODELSOIF4-140OIF5-190

Description

- For residential and light commercial application
- Painted cold-rolled steel housing
- 100% speed controllable
- High static pressure applications
- Easy installation
- High performance external rotor, motor/impellar, energy efficient and quiet operation
- Permanently lubricated ball bearings, maintenance free
- This Fan contains a positive pressure sensing switch which recognizes dryer operation and activates the booster fan from an independent electrical circuit.



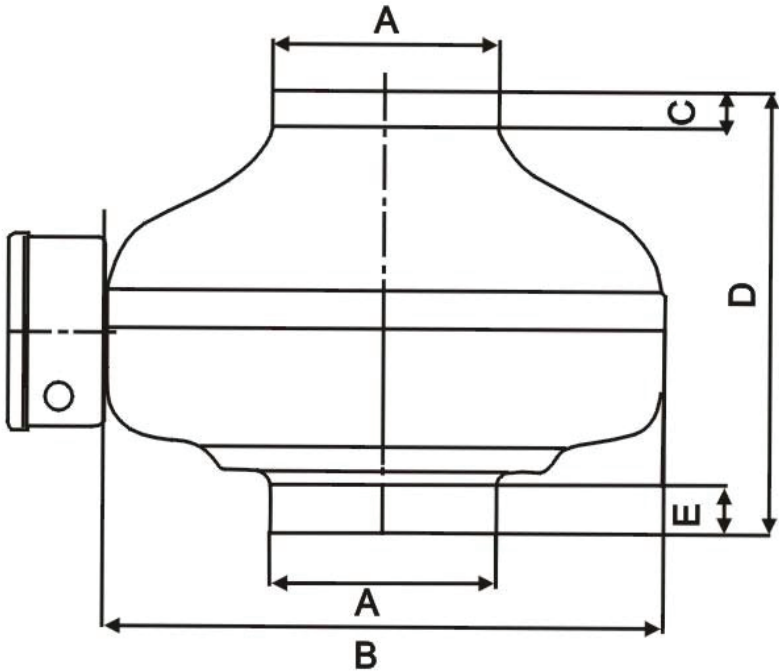
- Kit includes:**
- Dryer Booster Fan
 - Fan mounting Hardware
 - Tubing & 2 “ probe
 - 6 foot cord with 3 prong plug
 - Mounted pressure sensing switch

Technical Information

- Mounting Position : Vertical
- Pressure switch operates with a Recycling Delay Timer with 10 min. ON, 15 sec, OFF Cycle

Model	Current (amp)	Power (Watt)	RPM (Nominal)	Electrical Rating	Room Size Capacity
OIF4-140	0.80	92	2450	120V/60Hz	100-150 sq. ft.
OIF5-190	0.86	102	2420	120V/60Hz	150-200 sq. ft.

Model	Duct (A)	Overall Dia. (B)	Collar Length-Outlet (C)	Overall Height (D)	Collar Length-Inlet (E)
OIF4-140	4”	9.52”	0.78”	7.32”	0.59”
OIF5-190	5”	9.56”	0.98”	7.44”	0.86”



CERTIFICATIONS



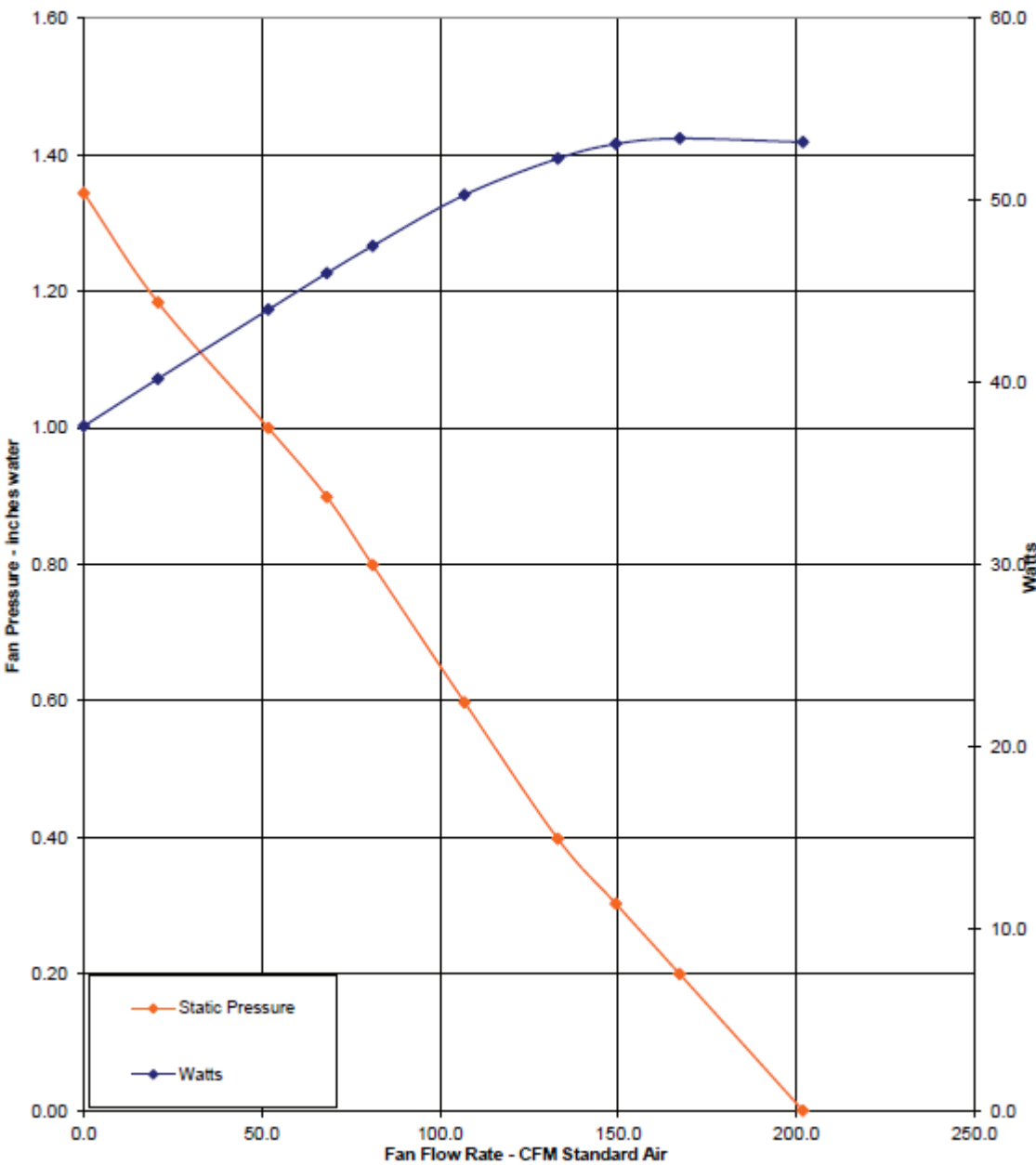
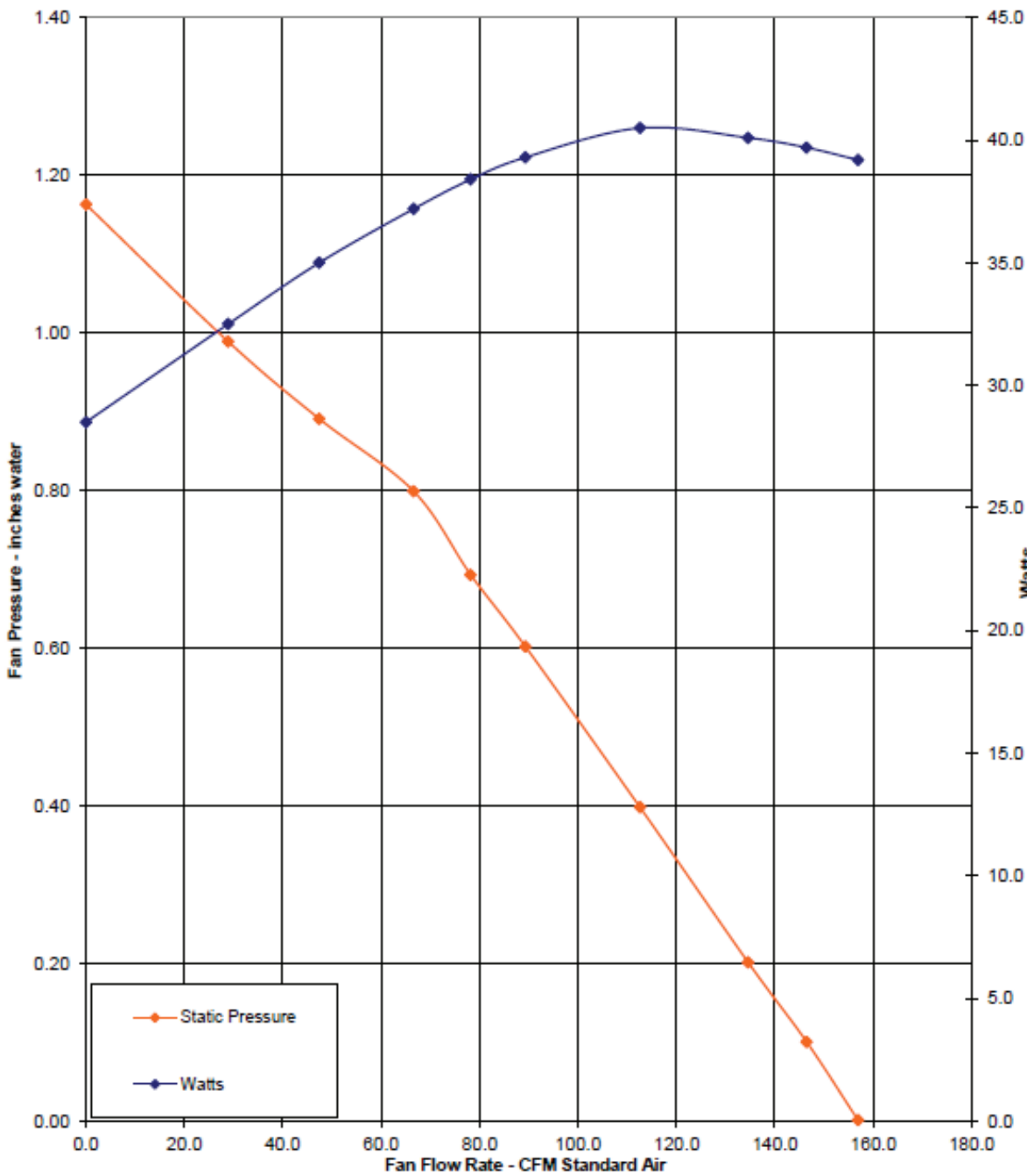
ORTECH

DRYER BOOSTER FAN KIT

Ultimate Ventilation Solutions

Specification Data

Model	0"	0.1"	0.25"	0.2"	0.3"	0.4"	0.5"	0.6"	0.7"	0.8"	0.9"	1.0"	1.2"	1.4"	1.5"	1.6"	2.0"	2.5"
OIF4-140	152	147	144	135	132	123	120	111	108	100	94	88	73	70	43	26	/	/
OIF5-190	214	200	188	182	176	164	155	141	129	120	105	100	79	61	47	32	/	/



Ordering Information

- This is a Kit product. In order to have the pressure switch and 6 Feet cord mounted on the dryer booster fan, please order equal quantity of the following:
 - Fan: OIF4-140 or OIF5-190
 - Switch: SDS-10
 - Cord: Cord 6 Feet

Reference	QTY.	Remarks	Project:
			Location:
			Architect:
			Engineer:
			Contractor:
			Submitted by:
			Date:

ORTECH INDUSTRIES INC.

13376 Comber Way,
Surrey, BC, V3W 8V4
Canada
Phone: 1-888-543-6473

CERTIFICATIONS



www.ortechindustries.com