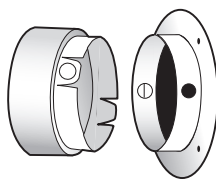


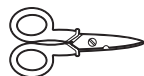
# Use and Care Guide



## Dryer Duct to Wall Connector



### TOOLS REQUIRED



Scissors



Phillips screwdriver

### HARDWARE REQUIRED (NOT INCLUDED)

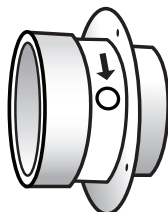


Screws (4)

### Installation

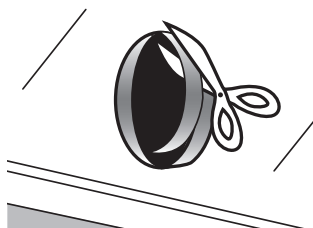
#### 1 SEPARATING THE CONNECTOR PIECES

- Separate the female wall connector from the male duct connector by pressing the two buttons on the sides and pulling the two pieces apart.



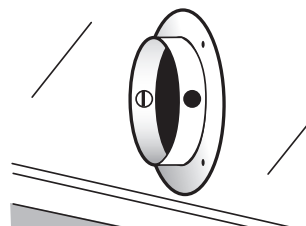
#### 2 TRIMMING THE DUCT

- Use scissors or tin snips to cut the duct coming out of your wall so that it is flush with the wall surface.



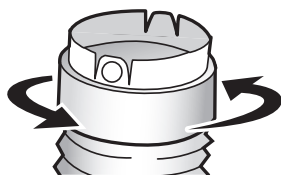
#### 3 SECURING THE CONNECTOR TO THE WALL

- Insert the female wall connector into the duct, and secure the connector to the wall with the appropriate screws depending on your wall material.



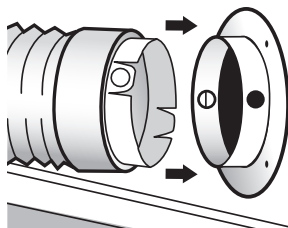
#### 4 SECURING THE CONNECTOR TO THE DUCT

- Secure the end of the male duct connector onto the flexible duct coming from your dryer by turning the male duct connector counter-clockwise until it grips the duct firmly.



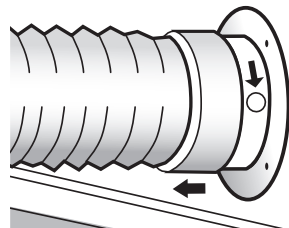
#### 5 JOINING THE TWO CONNECTOR PIECES

- To complete the installation, push the male duct connector into the female wall connector until the buttons pop back into place.



#### 6 SEPARATING THE CONNECTORS

- When access is needed to clean and maintain the ductwork, separate the connectors as in step 1.



### Important Information

This product can be used with aluminum foil or semi rigid aluminum ducts.

### Warranty

#### WHAT IS COVERED

All merchandise is warranted to be free from defects in workmanship and material for one year from the date of purchase. This includes normal wear and performance failure on items. The manufacturer will replace or repair at their option.

#### WHAT IS NOT COVERED

This warranty only covers normal wear and performance failure. It does not cover any malfunction, performance failure, or defect arising from the misuse, abuse, neglect, or modification of the product. Any damage or malfunction inflicted upon the product by the user or other external sources, or any failure to comply with the warnings and instructions, is not covered.

For further assistance visit [www.DundasJafine.com](http://www.DundasJafine.com).