

## ME8200 Non Spring Return FLP Modulating Wireless RF433MHz Actuator

The ME8200 wireless actuator utilizes a brushless, reversible synchronous A/C motor with constant torque and constant speed for accurate positioning over the full span of the valve travel with a unique,

patented, non spring return movement (having five robust moving parts) and has a life expectancy in excess of five hundred thousand cycles.

### General Actuator Specifications

- Supply voltage: 24Vac, 60/50Hz, +/- 10%, 45mA, 1 Va
- Control signal: Wireless RF433.92MHz (USA/Europe Standard) from Spartan TE8200/TE8300 room thermostat.
- Designed for unlicensed operation under FCC part 15.
- Ambient Temperature: 40°F-120°F (5°C-50°C) non condensing
- Cover: White ABS
- Output Force: 48Lbs (214N)
- Travel: 0.177" (4.5mm)
- Diagnostic LED's: Red LED power status is on Green LED signal is received

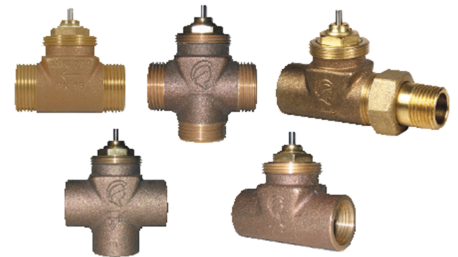
- Enclosure: IP51
- Mounting: M30 x 1.5
- Approval: Meets CE and ROHS requirements, low voltage class II, 24Vac device as per UL & CSA
- Address Setting: The nine dip switches under the actuators cover are to select the address that has to match the address setting on the thermostat, with the exact physical 'up and down' positions. The actuator will ignore the message which is sent by the transmitter with a different address setting. Possibility of 512 address combinations. The last dip switch, no 10, is factory set in down position (direct acting) for heating - for cooling set dip switch to up position (reverse acting).

**IMPORTANT - To validate a new address setting, the unit must be repowered.**

Spartan's innovative Wireless Actuator is based on a RF433.92MHz signal



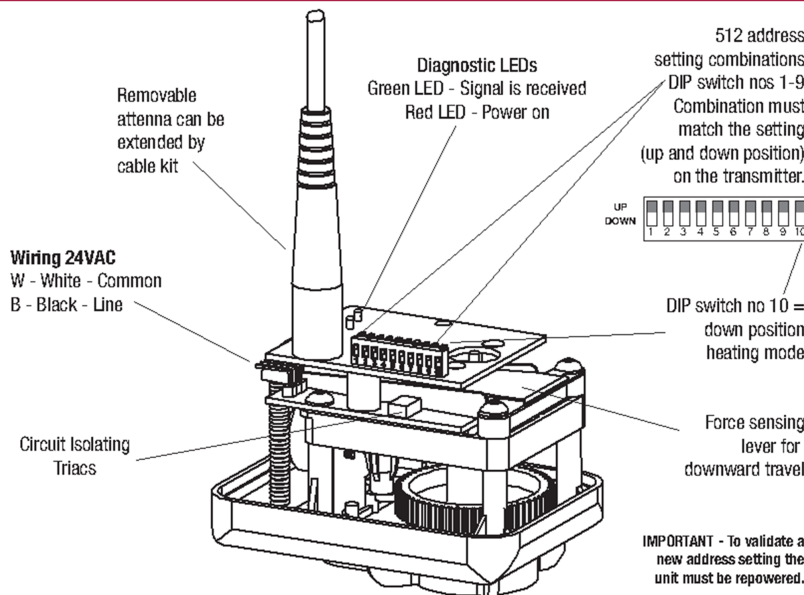
Interchangeable with all Spartan valve bodies



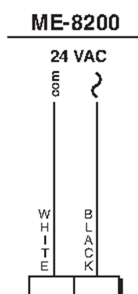
Spartan Peripheral Devices ME8200 wireless synchube actuator can be installed on a multitude of Spartan 2 way and 3 way zone control valve bodies with different type of connections, female x female threads in 1/2", 3/4" and 1" sizes, single male union in 1/2" and 3/4" sizes and direct solder in 1/2" and 3/4" sizes.

The commercial type valve bodies are designed for use on hot or chilled water up to 50% glycol mix or low pressure steam. The valve bodies all utilize low zinc anti-dezincification bronze casting and are coupled with long life replaceable and interchangeable internals. Choose from V240, V241, V243, V245, V246-12F, V243-12I, V320, V321, V323, V325, V420 series of zone valve bodies, see data sheet Zone Valve Bodies Data Sheet.

### ME8200 Features



### Wiring Diagram



### Cable Kit

**AM-PP-82**  
26" (66cms) Optional Cable Kit for situations where signal strength may be limited. This kit moves the antenna out from the actuator, or out of metal cabinets, to improve the signal range.



**AM-ANT-03**  
7" Antenna Omni-directional

### Dimensions

