

Installation Instructions for Side Mount Bracket Kit Part Number 1548066 01/02 Frigidaire 24" Under-counter Model Dishwashers

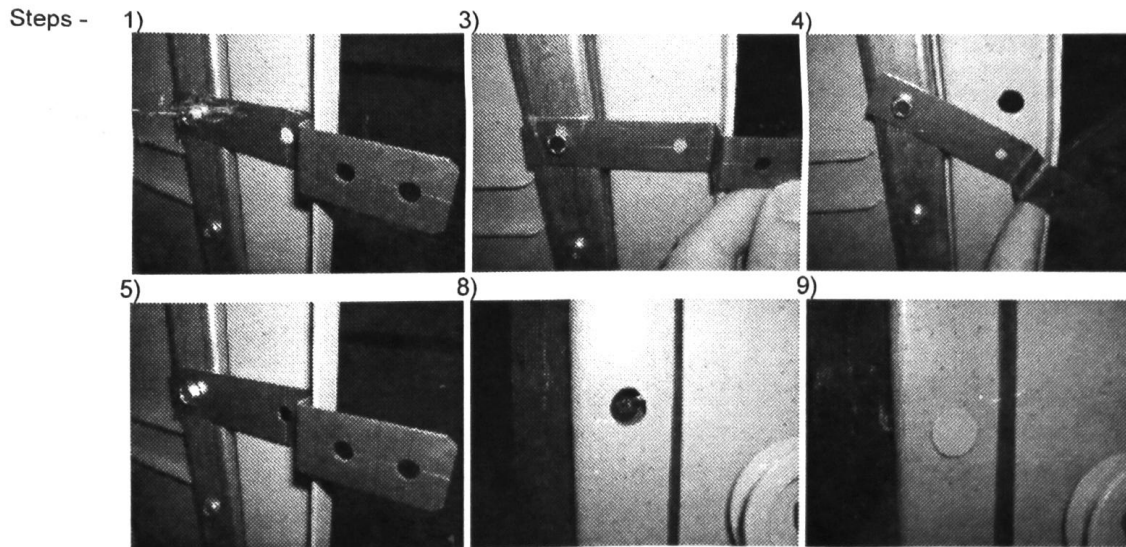
This kit is intended to mount dishwasher under a counter where the top mounting brackets can-not be used.
(This Kit is intended for use on Models Manufactured after April 2011 – Additional drilling into the steel frame may be required on earlier models and is recommended to be installed by a trained service technician)

NOTE: Used to Supplement Installation Instructions Provided with Unit.

Parts List:	Tools needed to install:	
2 – 154794101 Brackets (Left and Right)	Pliers	Power Drill
2 – 154825401 Screws for Steel Frame	Phillips Screwdriver	
2 – 154333301 Wood Screws for Cabinet	1/4" Nut Driver	
2 – 1547940 (01 white or 02 gray) Plastic Caps	3/8" Drill Bit	

- 1) Position Side Mount Brackets onto side of front frame (top hole on side) and attach with hex head screws with 1/4" Nut Driver (socket).
- 2) Dry fit tub into cabinet to determine which hole depth is required (if no drilling is required skip steps 3 – 7).
- 3) With Brackets perpendicular to tub front / frame and mark tub for location to drill hole.
- 4) Loosen Brackets then using a 0.375" (3/8") drill bit – drill hole through outer plastic tub flange.
- 5) Align Side Mount Bracket to tub hole (just drilled) and re-tighten into position on frame.
- 6) Repeat same sequence for other side of tub.
- 7) Bend and Break Bracket to appropriate length then slide tub into cabinet.
- 8) Using wood screw, fasten side mount bracket to inside cabinet (see note below). Bending of the bracket to fit to inside cabinet may be necessary.
- 9) Once cabinet screw is secure, snap plastic plug into hole (if hole was needed).
- 10) Repeat same for opposite side.

Note: Provided Side Mount Brackets have three positions (holes) for varying depth locations of tub to inside cabinets.
Side Mount Brackets also have two bend and break points to allow custom fit to cabinets.



Note: Alternate Depth positions:

