

# INSTALLATION INSTRUCTIONS FOR REPLACEMENT WASH MOTOR

This motor kit will replace a number of different motors. When replacing the wash motor always replace the o-rings. This kit also provides a replacement disconnect plug if needed to properly install this replacement motor. See Steps 8 through 11 for instructions to install the disconnect plug.

1. Remove sump from dishwasher.
2. Remove volute cover from sump by removing three (3) Torx head screws and remove ball.
3. Remove the motor mounting bracket two (2) screws from bottom of sump, slide off back of pump.
4. Before installing motor into sump install new o-rings onto motor and pump assembly.
5. With a small amount of liquid soap or rinse aid cover the o-ring. Slide the o-ring into the rear channel making sure o-ring does not get twisted. See Figure 2
6. First install rear o-ring, farthest from the wash impeller, this is the larger of the two seals. See Figure 1

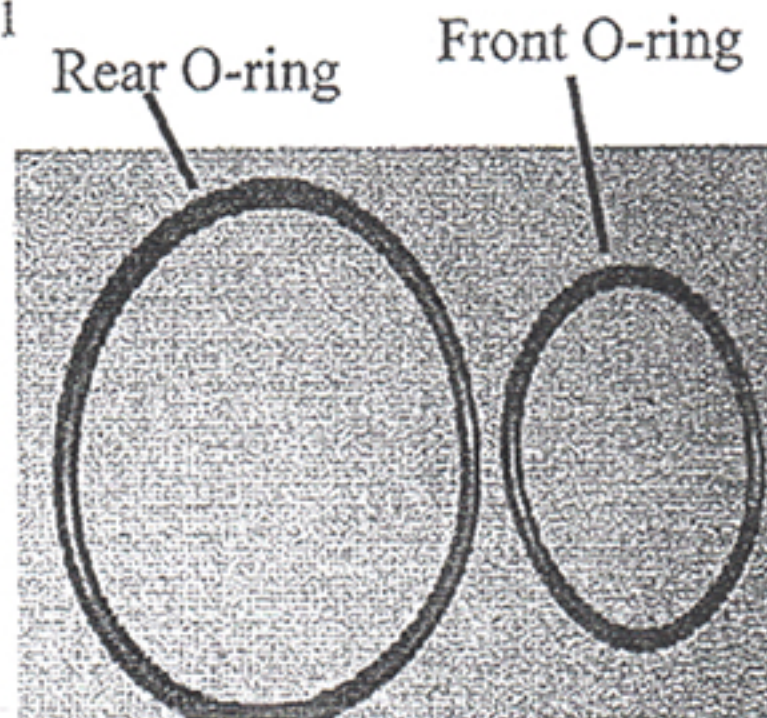


Figure 1.

7. Install front o-ring, closest to the wash impeller, this is the smaller of the two. See Figure 1 This o-ring will be installed the same as the rear only in the front channel of the pump housing. See Figure 2

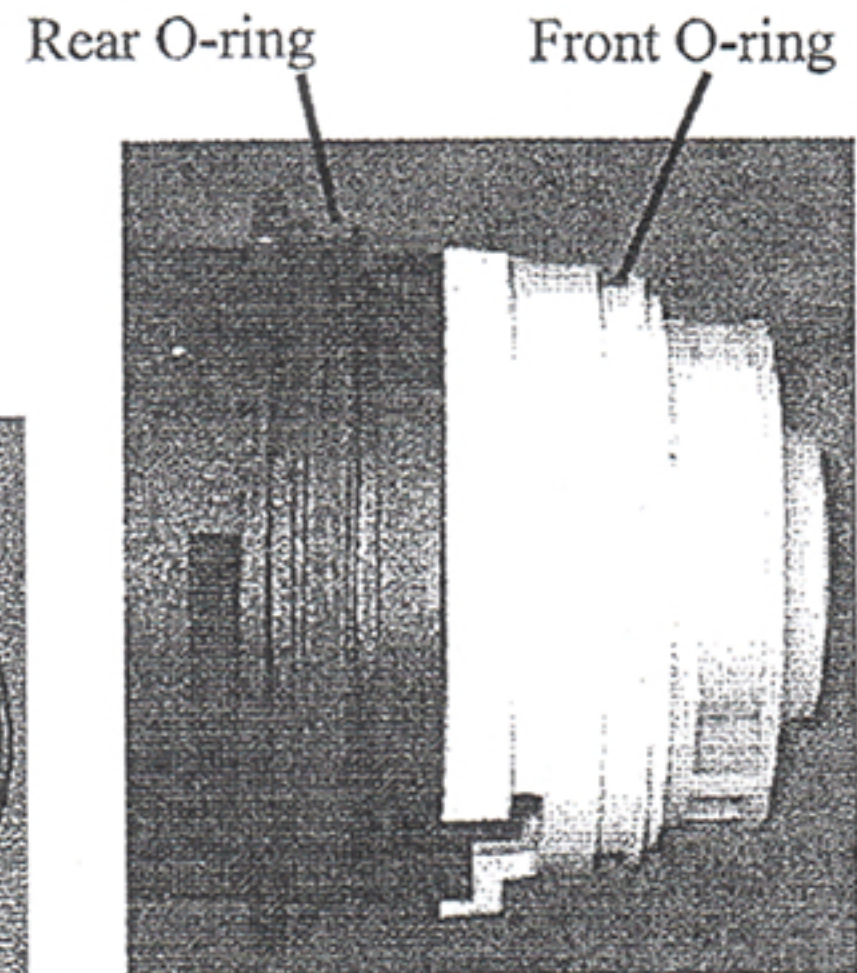


Figure 2.

Clean opening in sump, apply a small amount of liquid soap or rinse aid into the opening before inserting motor. **Do not twist the motor when installing it into sump, because this can dislocate and or damage the o-rings.** Push motor all the way into the opening before installing motor mounting bracket.

If you find the disconnect plug for the new motor is not the same as on the dishwasher you will need to follow the following instructions for replacing the disconnect plug.

8. Connect the new jumper to the blue and white wires with the connectors and shrink tape supplied in kit. Strip the wire insulation back ¼" from blue wire and attach one (1) piece of shrink tape onto wire. See Figure 3

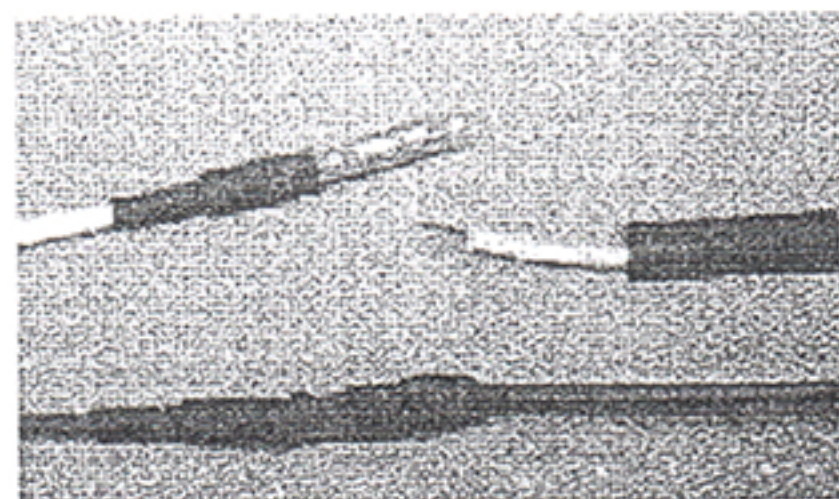


Figure 3.

9. Install the connector to the blue wire and the blue wire from the new disconnect and crimp the connector tightly. See Figure 4

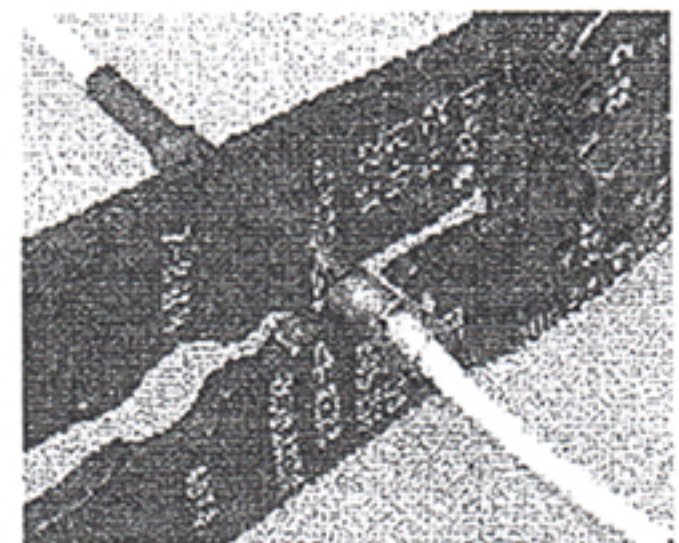


Figure 4.

10. Pull the shrink tape over the connection and heat with heat gun or hair dryer. See Figure 5

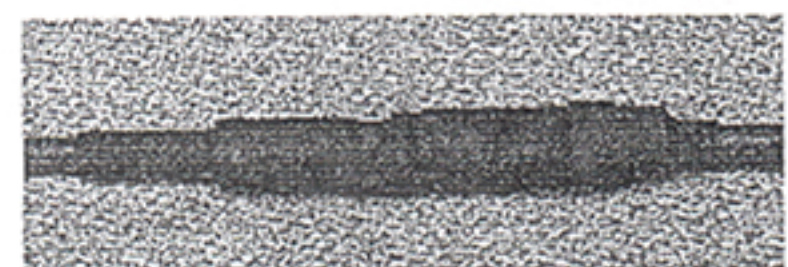


Figure 5.

11. Repeat steps 8 through 10 for the white wire from the disconnect.