

WARNING—Shock or Injury Hazard

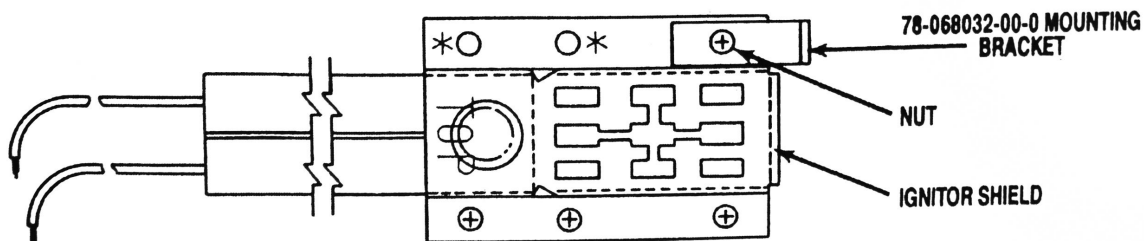
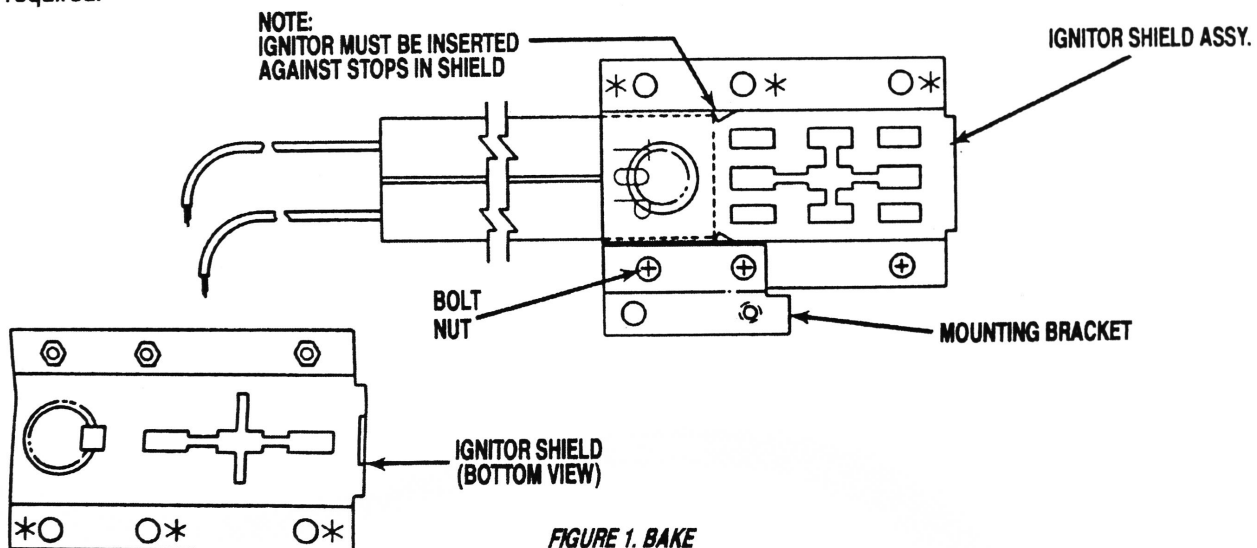
BEFORE DOING ANY SERVICE,
BE SURE TO DISCONNECT
UNIT FROM POWER SUPPLY

INSTALLATION INSTRUCTIONS for Flat Ignitor

This flat ignitor is used as a direct replacement for ignitor with 5-1/4" white ceramic base. For the same size ignitor with shield, the shield must be transferred as follows:

1. Remove ignitor assembly from burner and disconnect wires.
2. Loosen the screws on shield and slide the old ignitor out of shield.
3. Remove cardboard tube from new ignitor.
4. Slide new ignitor into the old shield, all the way to the stops, as shown in *Figure 1*.
5. Tighten the screws (if used) on shield. If the burner mounting bracket had to be removed from shield, install exactly as shown in the following figures.
6. Connect wires and install ignitor on burner.
7. Check ignitor operation and burner ignition.

Use the following diagrams for part identification if new ignitor shield, mounting bracket, or fasteners are required.



(Continued)

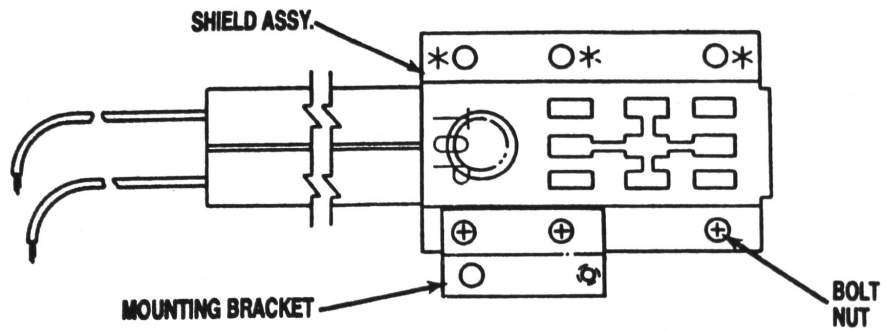


FIGURE 3. UPPER OVEN

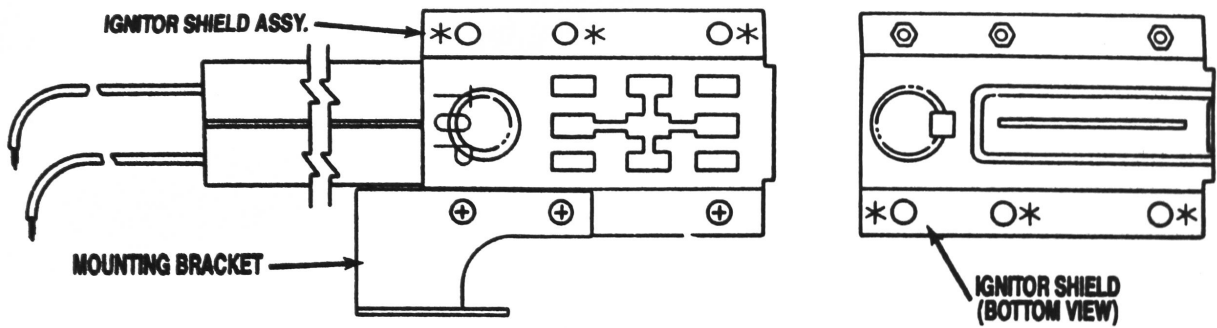


FIGURE 4

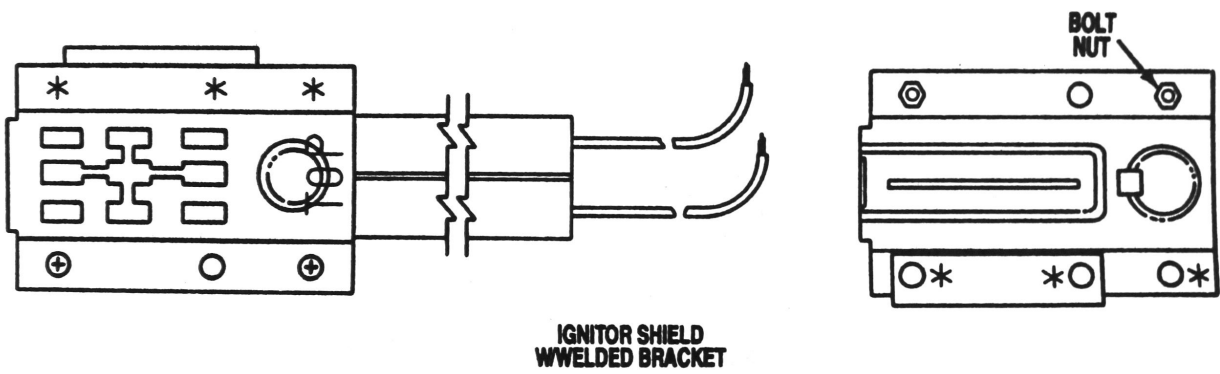


FIGURE 5. BROIL

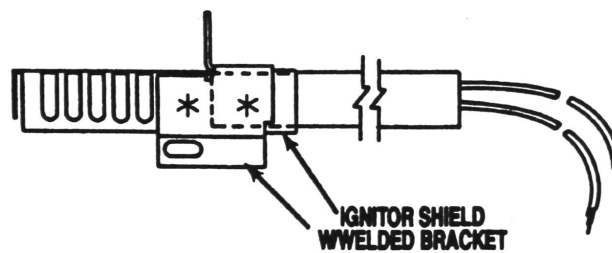


FIGURE 6. BAKE