

LED CENTER BASKET LUMINAIRE INSTALLATION INSTRUCTIONS



	Order code	Description	Watts (W)	Volts (V)	Colour temp. (K)	Initial lumens (lm)	CRI
1' X 4'	64082	LRCB/1X4/120-277V-DIM/36W/35K/STD	36	120-277	3 500	3 440.6	80
	64083	LRCB/1X4/120-277V-DIM/36W/40K/STD	36	120-277	4 000	3 510.1	84
	64084	LRCB/1X4/120-277V-DIM/36W/50K/STD	36	120-277	5 000	3 701.5	84
2' X 2'	64085	LRCB/2X2/120-277V-DIM/36W/35K/STD	36	120-277	3 500	3 440.6	84
	64086	LRCB/2X2/120-277V-DIM/36W/40K/STD	36	120-277	4 000	3 510.1	84
	64087	LRCB/2X2/120-277V-DIM/36W/50K/STD	36	120-277	5 000	3 563.3	84
2' X 4'	64088	LRCB/2X4/120-277V-DIM/42W/35K/STD	42	120-277	3 500	4 389.3	84
	64089	LRCB/2X4/120-277V-DIM/42W/40K/STD	42	120-277	4 000	4 410.4	84
	64090	LRCB/2X4/120-277V-DIM/42W/50K/STD	42	120-277	5 000	4 504.8	84
	64091	LRCB/2X4/120-277V-DIM/68W/35K/STD	68	120-277	3 500	6 630.1	84
	64092	LRCB/2X4/120-277V-DIM/68W/40K/STD	68	120-277	4 000	6 303.7	84
	64093	LRCB/2X4/120-277V-DIM/68W/50K/STD	68	120-277	5 000	7 072.8	84

*Operating temperature: -20~60°C (-4~140°F)

IMPORTANT - READ ALL INSTRUCTIONS BEFORE INSTALLATION

- Installation and maintenance must be performed by licensed electricians only.
- To avoid risk of electric shock, make sure to turn off main power switch prior to installation or maintenance.
- Must be installed in compliance with National Electrical Code (NEC) in the US or Canadian Electrical Code in Canada.
- Ensure input voltage and frequency are compatible with the luminaire. Check product manual for power requirements prior to installation.

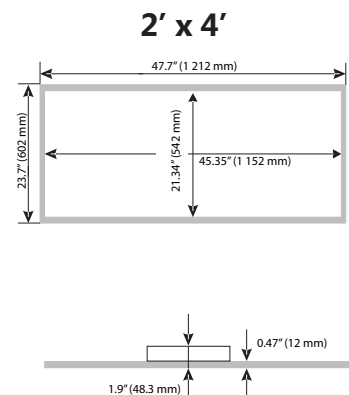
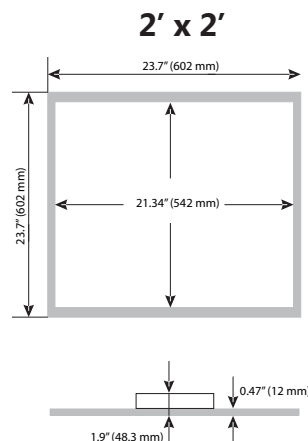
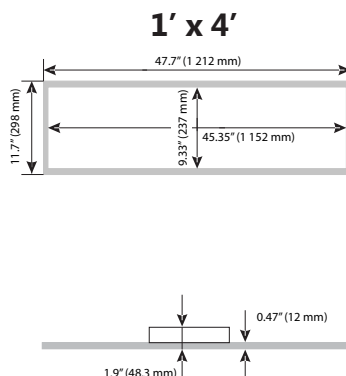
WARNING: Risk of Electric Shock. Suitable for dry and damp locations.

- Must be grounded
- Minimum 90 °C supply conductors
- Access above ceiling required
- Panels are normally set to work at extra low voltage below DC42V and constant current condition to ensure safety.
- Suitable for damp locations
- Designed for use in 120 V - 277 V, 50-60Hz protected circuit. Apply class 2 supply.
- This product must be installed in accordance with the applicable installation code by a person familiar with the construction and operation of the product and the hazards involved.

ELECTRICAL COMPONENTS AND CHARACTERISTICS

- Integral, high efficiency driver and power supply
- Nominal Power Factor: 0.9
- Dimming: 0-10 V standard

DIMENSIONS

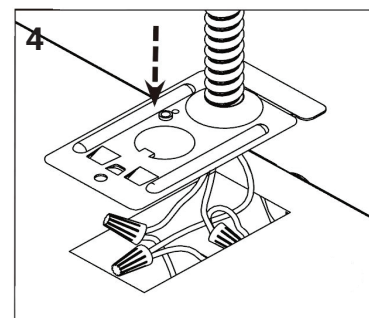
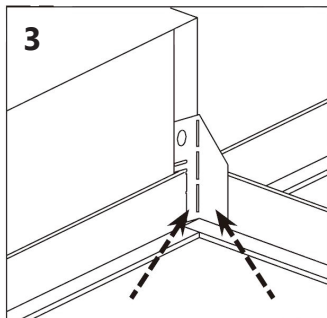
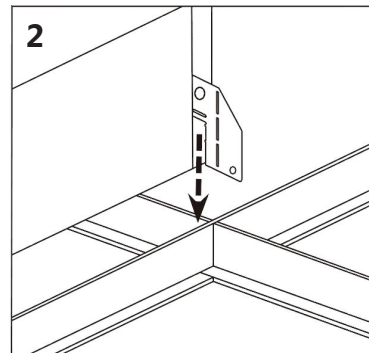
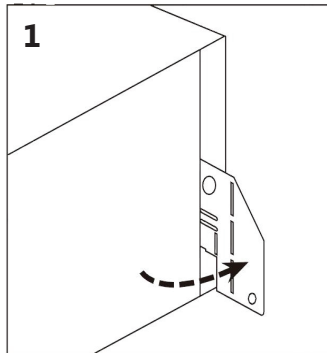


LED CENTER BASKET LUMINAIRE INSTALLATION INSTRUCTIONS

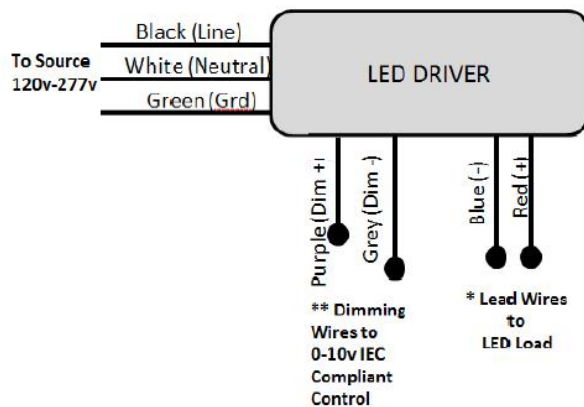


HOW TO INSTALL (MOUNTING & ELECTRICAL)

1. Bend out mounting tab 90 degrees on each corner.
2. Lay the fixture into T-grid grid.
3. Bend tabs flush against T-grid in order to clear corner for ceiling tile.
4. Ensure that the wiring of the last luminaire in the row is properly terminated. Then make all electrical connections to the luminaire. Attach the wiring access cover plate.



WIRING DIAGRAM



COMPATIBLE DIMMER LIST

LEVITON: IPL710-DL
LUTRON: NFTV, NTFTV
STANDARD: 61989 Transceiver

Although this product is compatible with most common residential type dimmers, dimming performance varies from dimmer to dimmer. Dimmer settings (for dimmers with brightness range adjustments) and the number of LED modules installed on the circuit can affect dimming performance.

Some dimmers may produce a reduced dimming range or exhibit a start-up flash.