

# LED MINI CEILING LUMINAIRE 6 & 8 INCH INSTALLATION INSTRUCTIONS



Order Code	Description	Watts (W)	Volts (V)	Colour Temp. (K)	Shape	Size in. (mm)
64154	LED/CL6/10W/30K/FM/RND/STD	10	120	3 000	Circle	5.80" (147 mm)
64155	LED/CL6/10W/40K/FM/RND/STD	10	120	4 000	Circle	5.80" (147 mm)
64156	LED/CL8/12W/30K/FM/RND/STD	12	120	3 000	Circle	8.26" (210 mm)
64157	LED/CL8/12W/40K/FM/RND/STD	12	120	4 000	Circle	8.26" (210 mm)

Operating temperature: -20°~45°C (-13°~113°F)

## COMPATIBLE DIMMERS

Order Code	COOPER	LEGRAND	LEVITON	LUTRON
64154	SLC03P, AAL06	HCL453P	IPL06, 6674, DSM10-1LZ	DVCL-153P, CTCL-153P, AYCL-253P, DVCL-253P
64155	SLC03P, AAL06	HCL453P	IPL06, 6674, DSM10-1LZ	DVCL-153P, CTCL-153P, AYCL-253P, DVCL-253P
64156	-	-	-	AYCL-253P, DVCL-253P, DSM10-1LZ
64157	SLC03P, AAL06	HCL453P	IPL06, 6674, DSM10-1LZ	DVCL-153P, CTCL-153P, AYCL-253P, DVCL-253P

## IMPORTANT - READ ALL INSTRUCTIONS BEFORE INSTALLATION

- Installation and maintenance must be performed by licensed electricians only.
- To avoid risk of electric shock, make sure to turn off main power switch prior to installation or maintenance.
- Must be installed in compliance with National Electrical Code (NEC) in the US or Canadian Electrical Code in Canada.
- Ensure input voltage and frequencies are compatible with the luminaire. Check product manual for power requirements prior to installation.

## WARNING: Risk of electric shock. Suitable for damp locations.

- Must be grounded
- Minimum 90 °C supply conductors
- Surface mounted
- This product must be installed in accordance with the applicable installation code by a person familiar with the construction and operation of the product and the hazards involved.

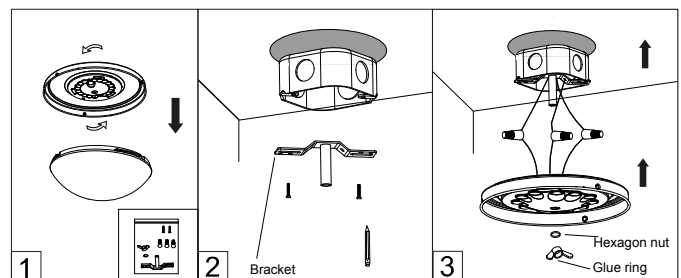
## ELECTRICAL COMPONENTS AND CHARACTERISTICS

- Integral, high efficiency driver and power supply
- Universal AC input voltage (120 V)
- Nominal power factor: 0.95
- Dimming: Yes (see dimmer list)

## HOW TO INSTALL (MOUNTING AND ELECTRICAL)

Turn off the electricity supply before installation.

1. Remove the diffuser by twisting counter-clockwise (fig.1)
2. Install the bracket on the junction box.
3. Connect the black and white wires of the luminaire with two wires of the same color from the junction box with wire caps. Connect the grounding wire of the luminaire with the one from the junction box with wire cap. Then tight the glue ring and hexagon nut.
4. Replace the diffuser by gently turning clockwise.



## MAINTENANCE

1. Clean and maintain the luminaire regularly
2. When cleaning, use a soft cloth with non-abrasive detergent and wipe dry with a clean soft cloth
3. Do not use any cleaners that contain alcohol, harsh chemicals or pesticides
4. When cleaning inside the luminaire, turn off the power, and do not spray liquid cleaner directly on the LEDs, LED driver or wiring.