



Honeywell

Owner's Guide

Guide du propriétaire

Guía del usuario

HVC0001 / HVC0002

Programmable Bath Fan Control

Contrôleur de ventilateur programmable

Controlador de ventilador programable



69-2316EFS-03

Read and save these instructions.

® U.S. Registered Trademark. Patents pending.
© 2009 Honeywell International Inc. All rights reserved.

À lire et conserver en lieu sûr.

® Marque de commerce enregistrée aux États-Unis. Brevets en instance.
© 2009 Honeywell International Inc. Tous droits réservés.

Estas instrucciones deben leerse y conservarse

® Marca registrada en los EE. UU. Patentes en trámite.
© 2009, Honeywell International Inc. Todos los derechos reservados.

Table of contents

Overview

About your programmable bath fan control.....	2
Quick reference	3

Installation

2-wire installation.....	4
4-wire installation.....	5

Setup

Ventilation Mode parameters.....	6
Time and date	7
Backlight mode.....	8
Daylight saving time	9

Modes of Operation





Ventilation mode	10
Customized cycle mode.....	12
Daily On/Off mode	14
Manual mode	16
Countdown mode	17


Appendices

Product specifications.....	18
Customer assistance	19
5-year limited warranty	20

About your programmable bath fan control

The bath fan control has been designed to control a single-speed bath fan. To suit your lifestyle, it can be programmed in any of the following modes of operation:

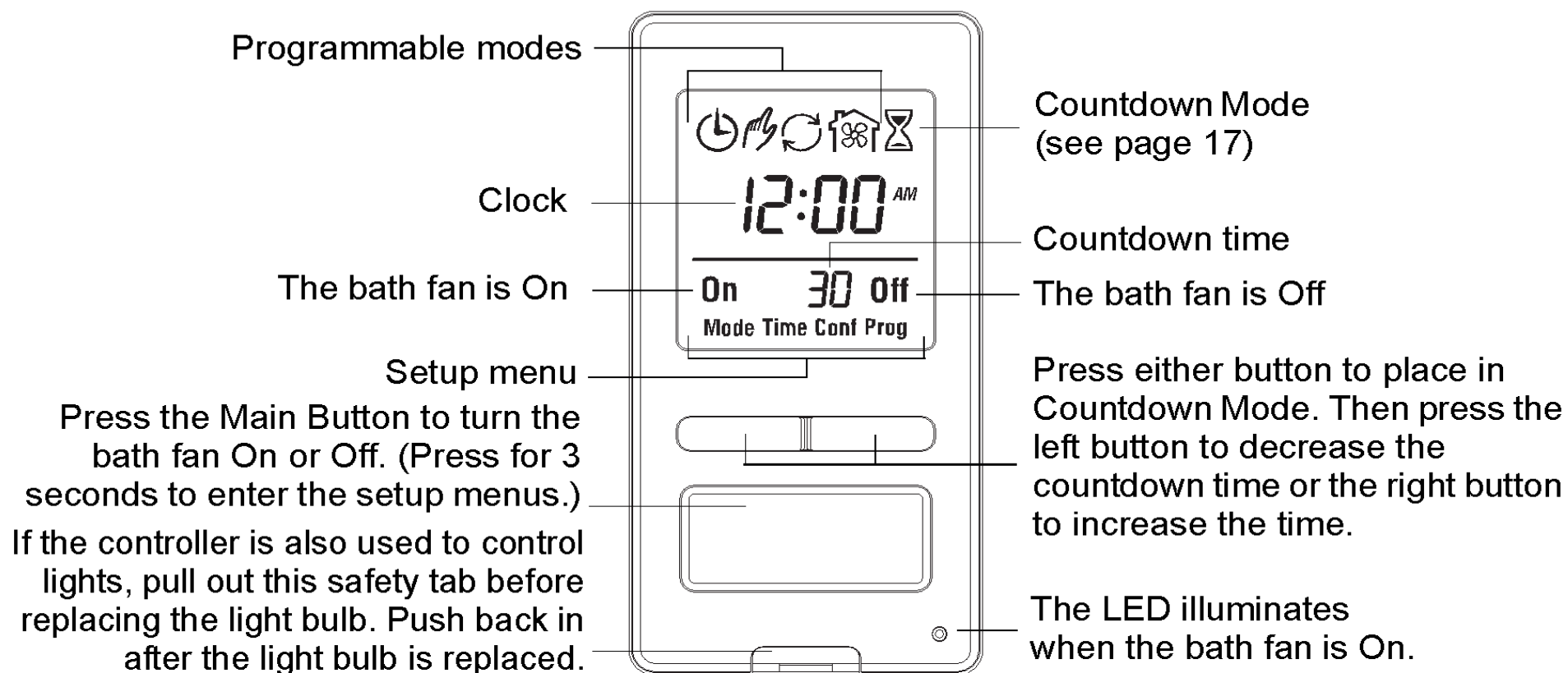
- Ventilation Mode  (see page 10)
- Customized Cycle Mode  (see page 12)
- Daily On/Off Mode  (see page 14)
- Manual Mode  (see page 16)

Unlike the four programmable modes mentioned above, the Countdown Mode  can easily be activated by simply pressing a button (see page 17). In this mode, the fan is on until the end of the programmed countdown time when the controller returns to the programmed mode.



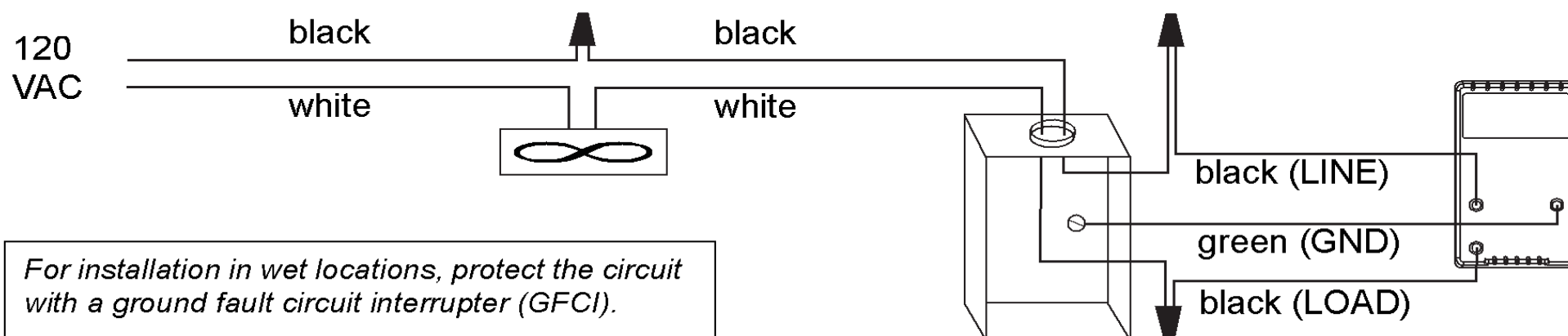
This controller cannot be used with a load lower than 0.1 A or higher than 2.5 A. The controller can be used to control a bath fan's built-in light or a separate light fixture connected to the bath fan control circuit. However, the light cannot be independently controlled and will turn On or Off at the same time as the fan.

Quick reference



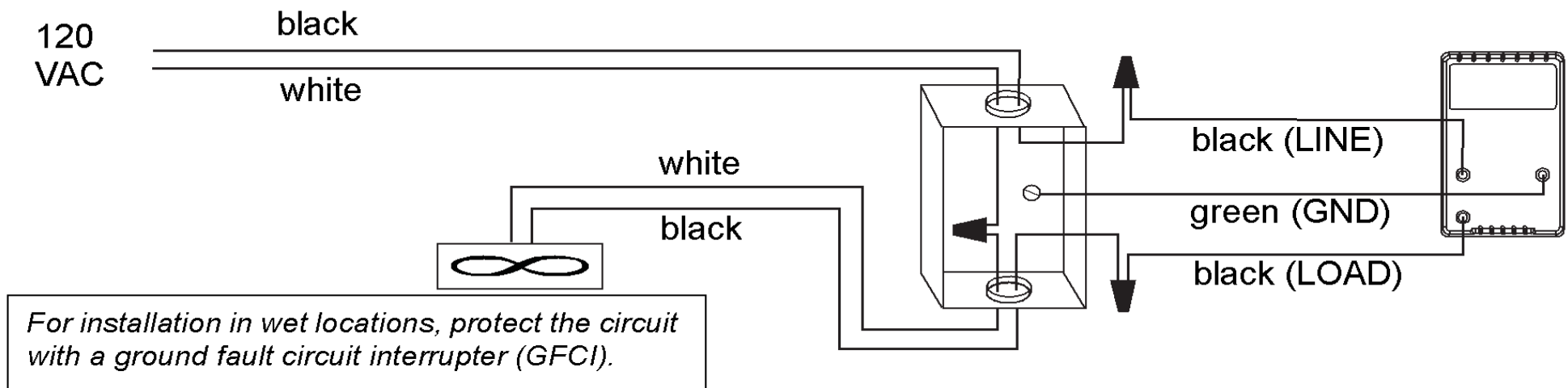
2-wire installation

- 1 Cut power at the main electrical panel to avoid electric shock.
- 2 Remove the existing switch if applicable.
- 3 Install the bath fan controller.
- 4 Apply power at the circuit breaker.



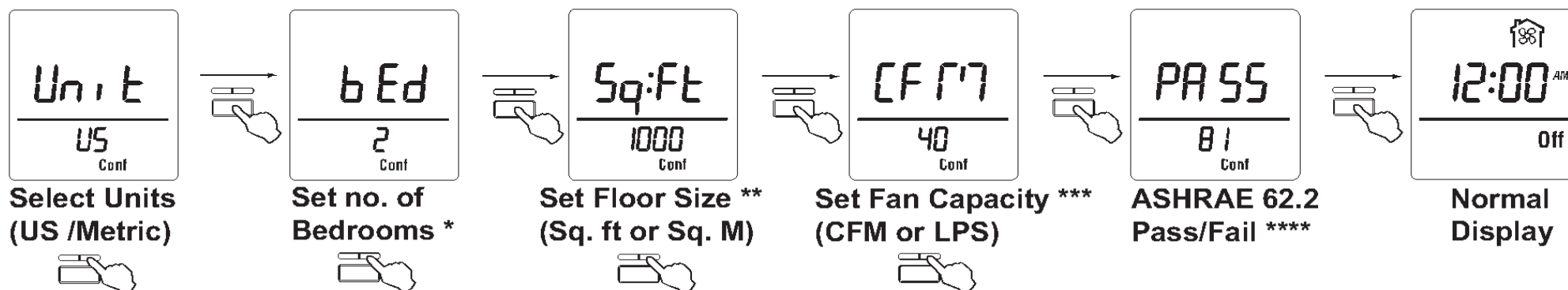
4-wire installation

- ❶ Cut power at the main electrical panel to avoid electric shock.
- ❷ Remove the existing switch if applicable.
- ❸ Install the bath fan controller.
- ❹ Apply power at the circuit breaker.



Set the Ventilation Mode parameters

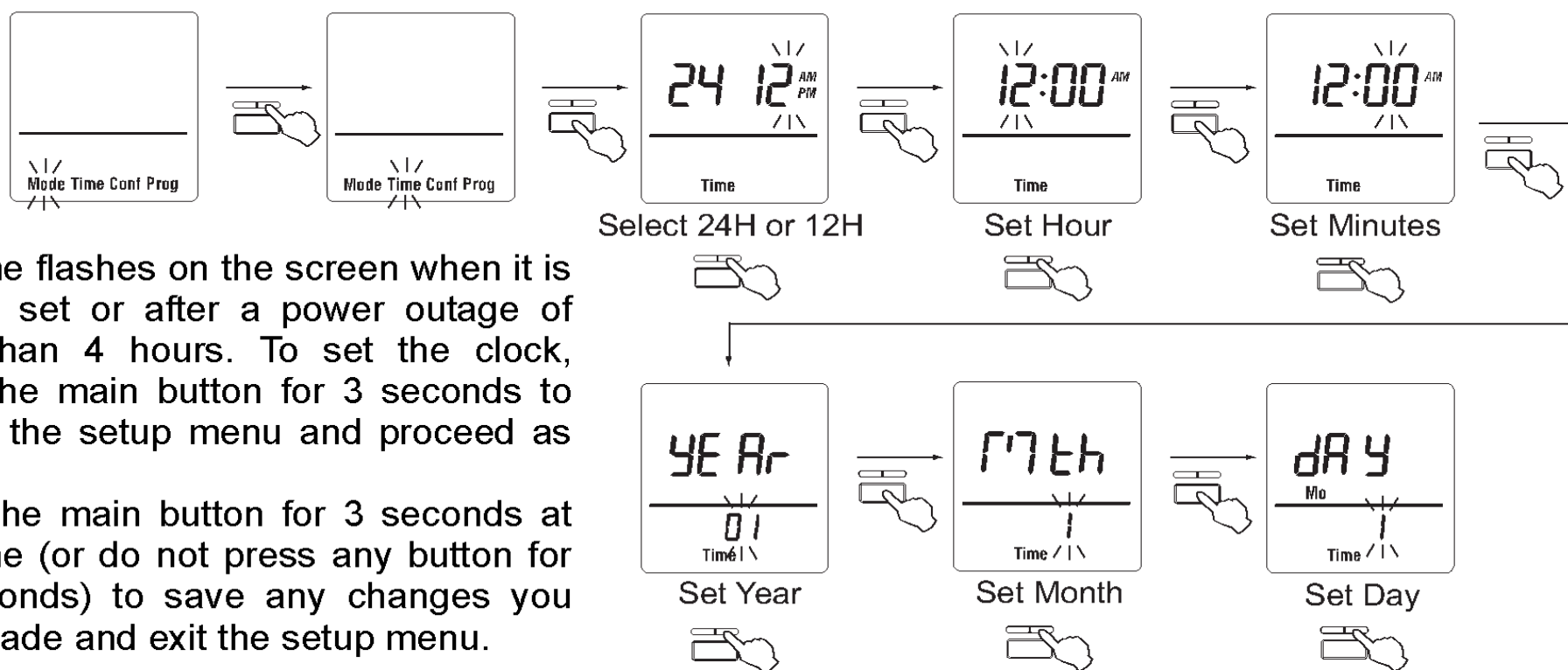
At first power-up, you will be prompted to set the following parameters:



If you press the main button for 3 seconds or do not press any button for 60 seconds, the controller will go to normal display. If the parameters are not set, you will again be prompted the next time the controller is powered up, for example, after a power outage. The parameters can be set at any time (see page 10).

- * No. of bedrooms (1, 2, ..., 6)
- ** Floor space (1000, 1100, ..., 5000 sq. ft. or 100, 110, ..., 500 m²)
- *** Fan capacity (30, 40, ..., 200 CFM or 15, 20, ..., 100 LPS)
- **** The controller shows whether you pass or fail ASHRAE Standard 62.2 for ventilation and the percentage of time the fan will run every hour. If the controller indicates Fail; this usually means the fan capacity is insufficient for your house.

Set the time and date



The time flashes on the screen when it is not yet set or after a power outage of more than 4 hours. To set the clock, press the main button for 3 seconds to display the setup menu and proceed as shown.

Press the main button for 3 seconds at any time (or do not press any button for 60 seconds) to save any changes you have made and exit the setup menu.

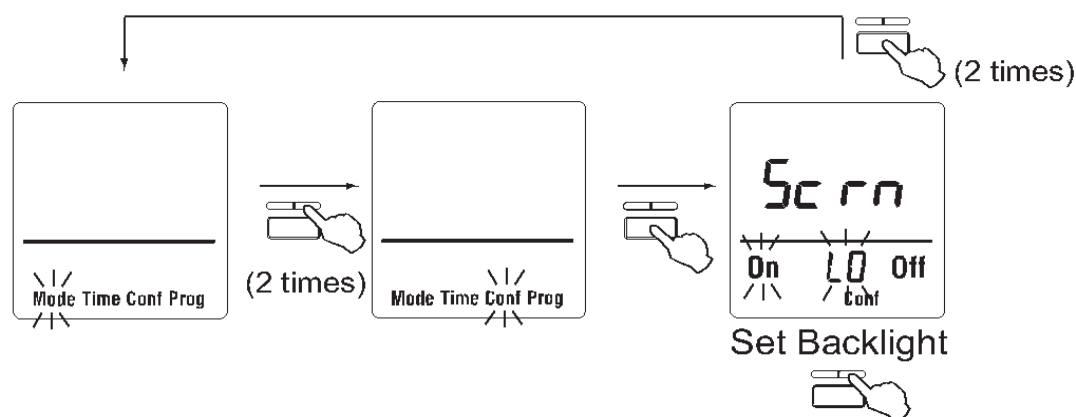
Set the Backlight mode

The controller provides 3 backlight modes. Depending on the mode selected, the screen behaves as follows:

- **Scrn Off:** The screen is not lit (the backlight is off).
- **Scrn On HI:** The screen is lit at high intensity.
- **Scrn On LO:** The screen is lit at low intensity (default mode).

When you press any button, the screen is lit at high intensity for 8 seconds.

To set the backlight mode, press the main button for 3 seconds to display the setup menu and proceed as shown:

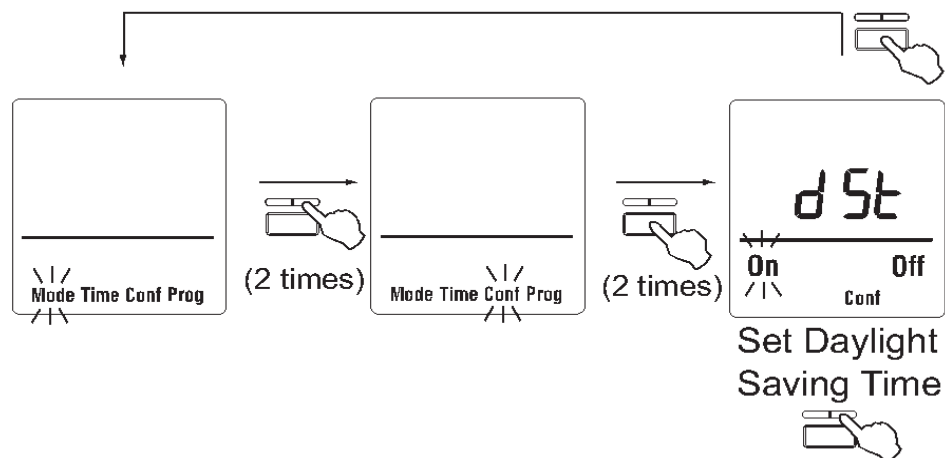


Press the main button for 3 seconds at any time (or do not press any button for 60 seconds) to save any changes you have made and exit the setup menu.

Set the Automatic Daylight Savings Time Changeover

When Automatic Daylight Savings Time changeover is enabled (DST On), the controller automatically switches to daylight savings time (summer time) at 2:00 am on the second Sunday of March and back to standard time (winter time) at 2:00 am on the first Sunday of November. This function is enabled by default.

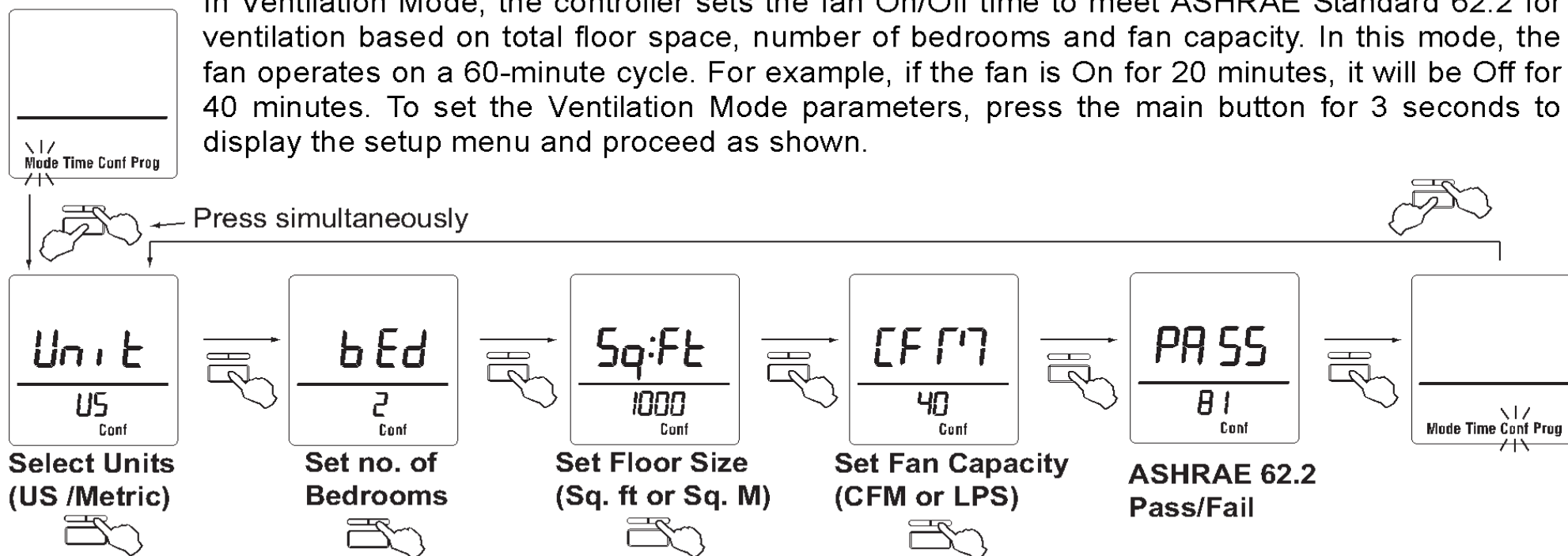
To set the Automatic Daylight Savings Time Changeover, press the main button for 3 seconds to display the setup menu and proceed as shown:



Press the main button for 3 seconds at any time (or do not press any button for 60 seconds) to save any changes you have made and exit the setup menu.

Ventilation Mode

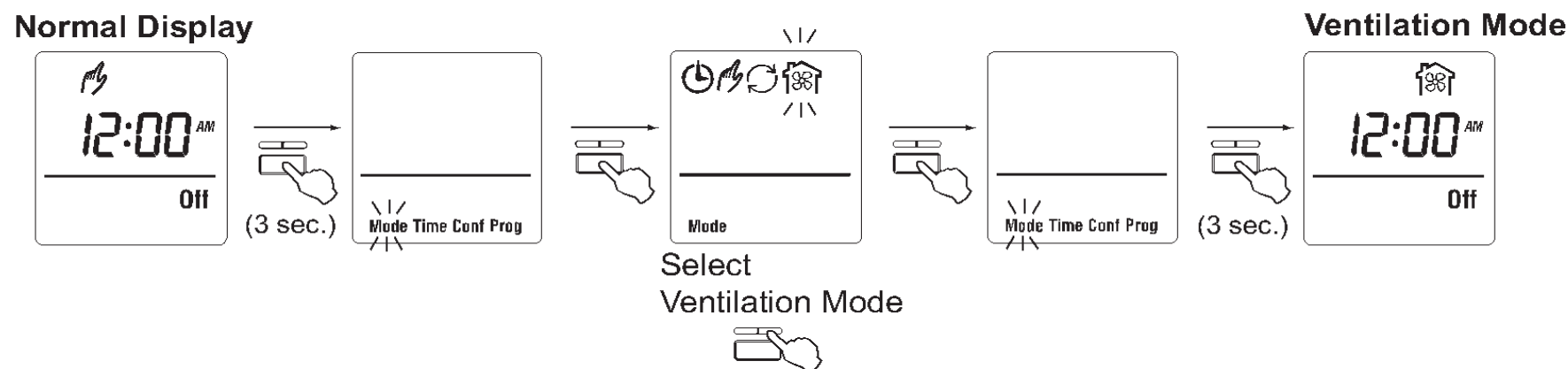
In Ventilation Mode, the controller sets the fan On/Off time to meet ASHRAE Standard 62.2 for ventilation based on total floor space, number of bedrooms and fan capacity. In this mode, the fan operates on a 60-minute cycle. For example, if the fan is On for 20 minutes, it will be Off for 40 minutes. To set the Ventilation Mode parameters, press the main button for 3 seconds to display the setup menu and proceed as shown.



Press the main button for 3 seconds at any time (or do not press any button for 60 seconds) to save any changes you have made and exit the setup menu.

Ventilation Mode (cont'd)

To place the controller in Ventilation Mode, proceed as shown:



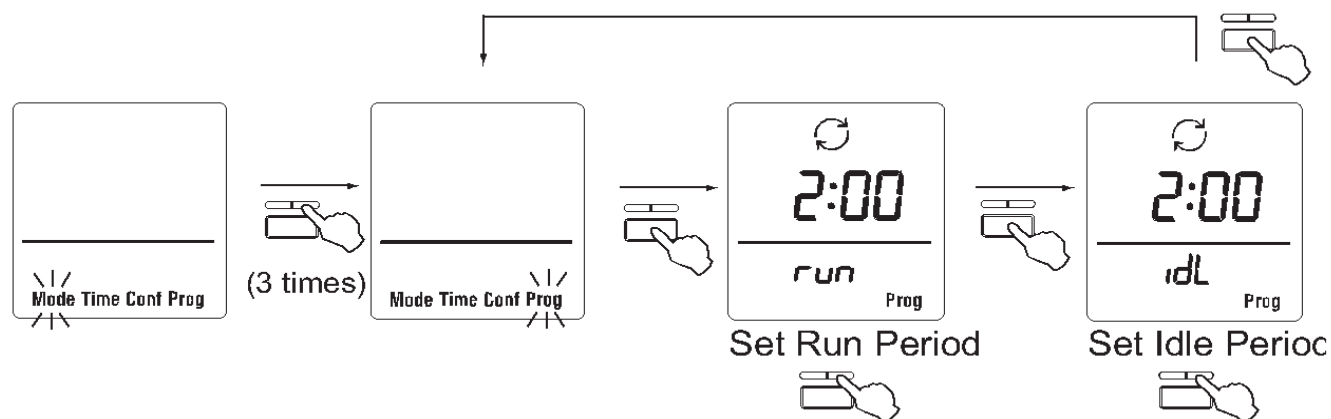
Temporary override

Press the main button to temporarily turn the fan On or Off. For example, if you press the main button to turn the fan On during the idle period, the fan will remain On until the beginning of the next idle period or until you press the main button again.

Customized Cycle Mode

In Customized Cycle Mode, you set the amount of time the fan is On (Run Period) or Off (Idle Period). Each period can be set between 10 minutes and 120 minutes in increments of 5 minutes. The controller will cycle between the two periods. For example, if you set the Run Period to 10 minutes and the Idle Period to 20 minutes, you have established a cycle of 30 minutes. During every cycle, the fan will turn On for 10 minutes and Off for 20 minutes.

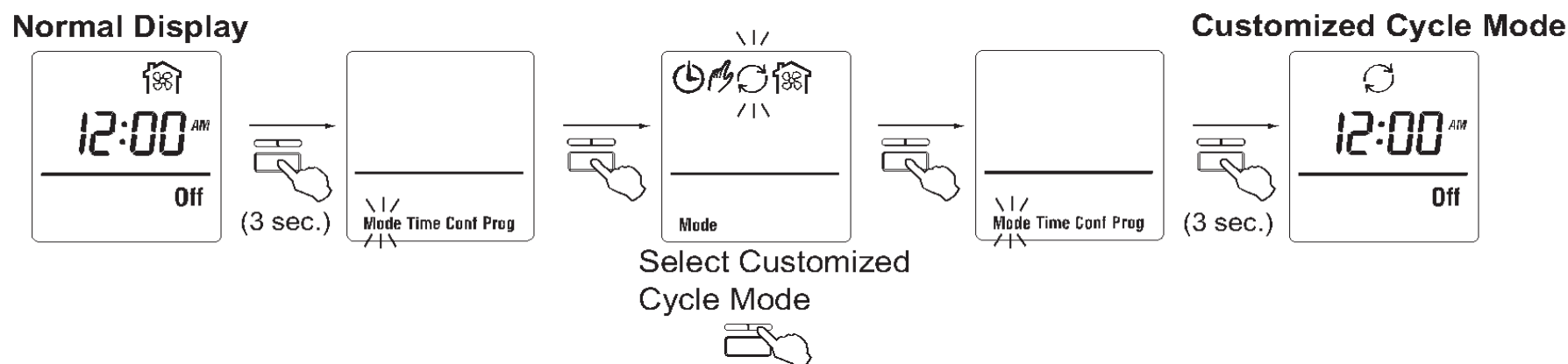
The Run Period and Idle Period are available only if the controller is in Customized Cycle Mode (see opposite page). To set the periods, press the main button for 3 seconds to display the setup menu and proceed as shown:



Press the main button for 3 seconds at any time (or do not press any button for 60 seconds) to save any changes you have made and exit the setup menu.

Customized Cycle Mode (cont'd)

To place the controller in Customized Cycle Mode, proceed as shown:



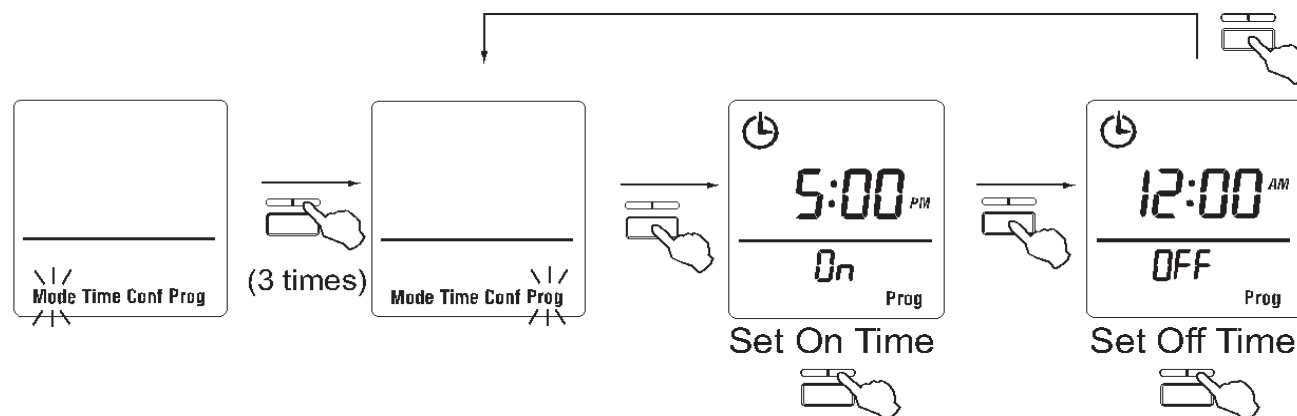
Temporary override

Press the main button to temporarily turn the fan On or Off. For example, if you press the main button to turn the fan On during the idle period, the fan will remain On until the beginning of the next idle period or until you press the main button again.

Daily On/Off Mode

In Daily On/Off Mode, the fan turns On and Off once a day according to the programmed On Time and Off Time.

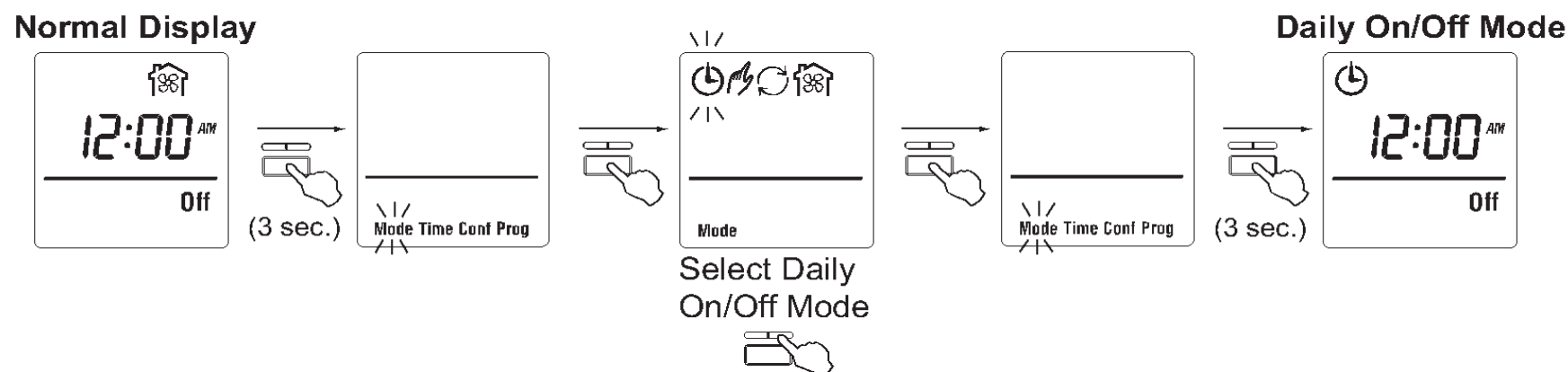
The On Time and Off Time are available only if the controller is in Daily On/Off Mode (see opposite page). To set the On Time and Off Time, press the main button for 3 seconds to display the setup menu and proceed as shown:



Press the main button for 3 seconds at any time (or do not press any button for 60 seconds) to save any changes you have made and exit the setup menu.

Daily On/Off Mode (cont'd)

To place the controller in Daily On/Off Mode, proceed as shown:



Temporary override

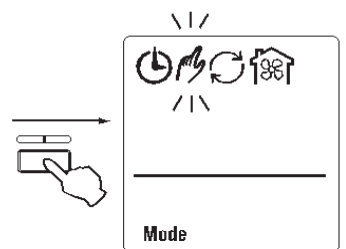
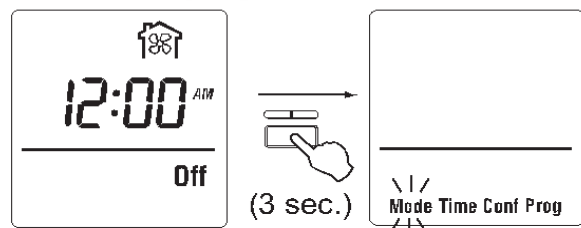
Press the main button to temporarily turn the fan On or Off. For example, if you press the main button to turn the fan On, it will remain On until the programmed Off time or until you press the main button again.

Manual Mode

In Manual Mode, the controller operates like a regular switch. In this mode, simply press the main button to turn the fan On or Off.

To place the controller in Manual Mode, proceed as shown:

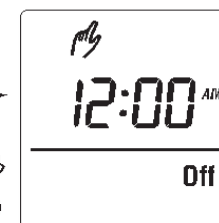
Normal Display



Select
Manual Mode



Manual Mode

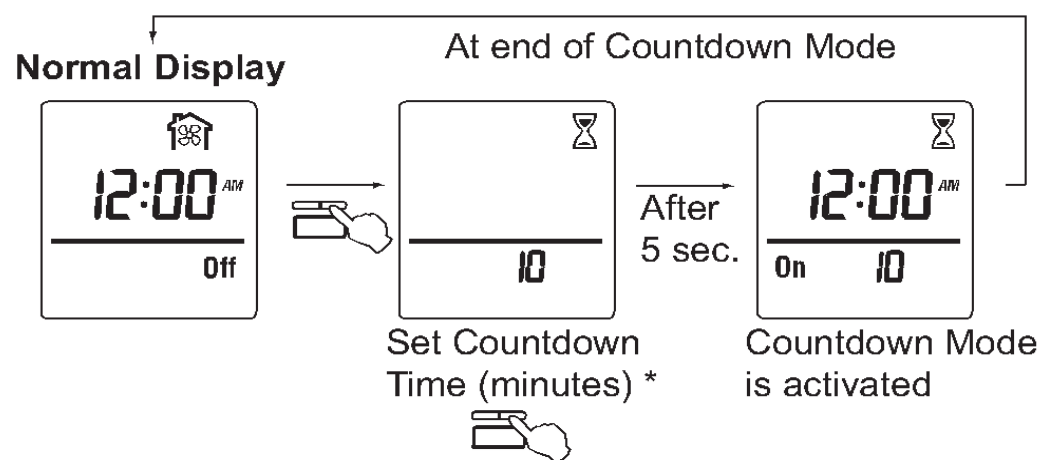


Countdown Mode

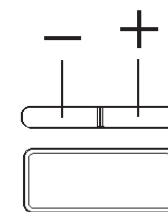
Place the controller in Countdown Mode to run the fan for 10-60 minutes. The fan turns On when the controller is in this mode. At the end of the countdown time, the controller returns to its programmed mode and the fan turns Off. (**NOTE:** The fan might stay On if the controller has been set to turn the fan On at that given time in the programmed mode.)

You can cancel the Countdown Mode and return to the programmed mode at any time by pressing the main button.

To place the controller in Countdown Mode, proceed as shown:



* Press the left or right button once to use the same countdown time as the one used the last time. Press the left (-) or right (+) button more than once to decrease or increase the countdown time (in increments of 5 minutes).



Product Specifications

HVC0001:	white
HVC0002:	biscuit
Voltage:	120 VAC - 15%, + 10%
Frequency:	60 Hz \pm 5%
Minimum Load:	0.1 A (12 W)
Maximum Load:	2.5 A (300 W)
Minimum Power Factor:	0.60
Operating Temperature Range:	-15°C to 50°C (5°F to 122°F)
Storage Temperature Range:	-40°C to 60°C (-40°F to 140°F)



Customer Assistance

For assistance with this product, please visit <http://yourhome.honeywell.com> or call Honeywell Customer Care toll-free at 1-800-468-1502.

5-year limited warranty

Honeywell warrants this product, excluding battery, to be free from defects in the workmanship or materials, under normal use and service, for a period of five (5) years from the date of purchase by the consumer. If at any time during the warranty period the product is determined to be defective or malfunctions, Honeywell shall repair or replace it (at Honeywell's option).

If the product is defective,

- (i) return it, with a bill of sale or other dated proof of purchase, to the place from which you purchased it; or
- (ii) call Honeywell Customer Care at 1-800-468-1502. Customer Care will make the determination whether the product should be returned to the following address: Honeywell Return Goods, Dock 4 MN10-3860, 1885 Douglas Dr. N., Golden Valley, MN 55422, or whether a replacement product can be sent to you.

This warranty does not cover removal or reinstallation costs. This warranty shall not apply if it is shown by Honeywell that the defect or malfunction was caused by damage which occurred while the product was in the possession of a consumer.

Honeywell's sole responsibility shall be to repair or replace the product within the terms stated above. HONEYWELL SHALL NOT BE LIABLE FOR ANY LOSS OR DAMAGE OF ANY KIND, INCLUDING ANY INCIDENTAL OR CONSEQUENTIAL DAMAGES RESULTING, DIRECTLY OR INDIRECTLY, FROM ANY BREACH OF ANY WARRANTY, EXPRESS OR IMPLIED, OR ANY OTHER FAILURE OF THIS PRODUCT. Some states do not allow the exclusion or limitation of incidental or consequential damages, so this limitation may not apply to you.

THIS WARRANTY IS THE ONLY EXPRESS WARRANTY HONEYWELL MAKES ON THIS PRODUCT. THE DURATION OF ANY IMPLIED WARRANTIES, INCLUDING THE WARRANTIES OF MERCHANTABILITY AND FITNESS FOR A PARTICULAR PURPOSE, IS HEREBY LIMITED TO THE FIVE-YEAR DURATION OF THIS WARRANTY.

Some states do not allow limitations on how long an implied warranty lasts, so the above limitation may not apply to you. This warranty gives you specific legal rights, and you may have other rights which vary from state to state.

If you have any questions concerning this warranty, please write to Honeywell Customer Relations, 1985 Douglas Dr, Golden Valley, MN 55422 or call 1-800-468-1502. In Canada, write to Retail Products ON15-02H, Honeywell Limited/Honeywell Limitée, 35 Dynamic Drive, Scarborough, Ontario M1V 4Z9.