

Wiring for Damper Actuators and Control Valves

Proportional, Non-Spring Return, Electronic Fail-Safe, 24V



W333-11

| | | | | | | |
|-------------------|---------------|------------|---------------|---------------|-----------|-----------------|
| Actuators: | LMB24-SR (-T) | NMB24-SR | LMX24-SR (-T) | NMX24-SR (-T) | LRB24-SR | TR24-SR (-T) US |
| | AMB24-SR | GMB24-SR | AMX24-SR (-T) | GMX24-SR | ARB24-SR | LRX24-SR |
| | CMB24-SR-L | CMB24-SR-R | GKB24-SR | GKX24-SR | NKQB24-SR | NKQX24-SR |

Hazard Identification

Warnings and Cautions appear at appropriate sections throughout this manual. Read these carefully.

CAUTION

Indicates a potentially hazardous situation which, if not avoided, may result in minor or moderate injury. It may also be used to alert against unsafe practices.

- Equipment damage!**
Up to four actuators may be connected in parallel if not mechanically linked. Power consumption and input impedance must be observed.

WARNING

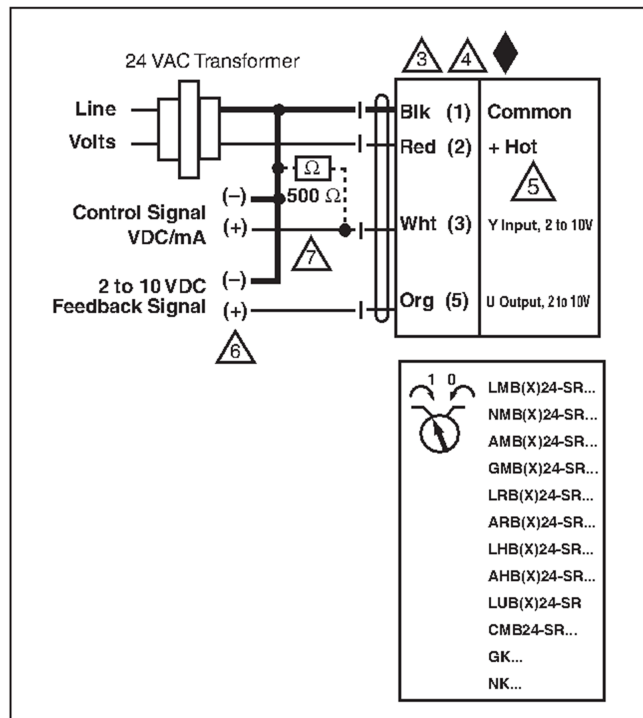
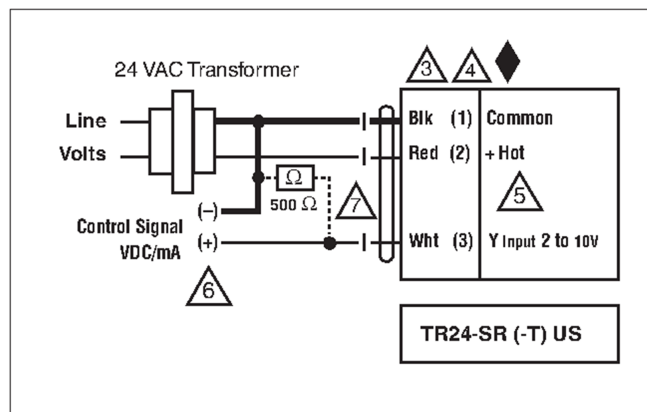
Live Electrical Components!
During installation, testing, servicing and troubleshooting of this product, it may be necessary to work with live electrical components. Have a qualified licensed electrician or other individual who has been properly trained in handling live electrical components perform these tasks. Failure to follow all electrical safety precautions when exposed to live electrical components could result in death or serious injury.

INSTALLATION NOTES

- Actuators may also be powered by 24 VDC.
- Actuators with plenum rated cable do not have numbers on wires; use color codes instead. Actuators with appliance cables are numbered.
- Only connect common to neg. (-) leg of control circuits. Terminal models (-T) have no-feedback.

APPLICATION NOTES

- Meets cULus requirements without the need of an electrical ground connection.
- A 500 Ω resistor converts the 4 to 20 mA control signal to 2 to 10 VDC.



N40067 - 7/11 - Subject to change. © Belimo Aircontrols (USA), Inc.