

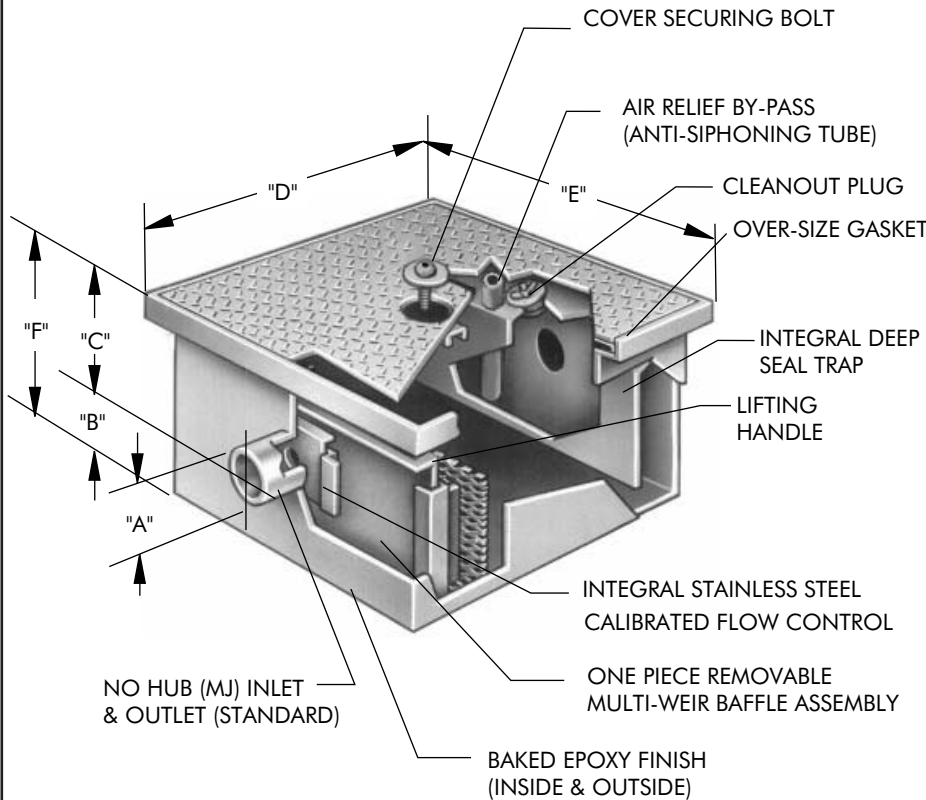


GI-100-L

Tag: _____

Grease Interceptor on Floor Low Rough-in

SPECIFICATION: Watts Drainage Products GI-100-L epoxy coated inside and outside fabricated steel grease interceptor with flow rating of 20 to 50 GPM and grease capacity of 40 to 100 LBS. Unit shall include one piece removable multi-weir baffle assembly, code approved deep seal trap, cover securing bolt(s), stainless steel calibrated orifice plate and recessed "non-skid" rectangular cover.



Order Code: GI- - L - -

Ex. GI-120-L-B

Flow Rate (Select One)		
Suffix	Description	
120	20 GPM	<input type="checkbox"/>
135	35 GPM	<input type="checkbox"/>
150	50 GPM	<input type="checkbox"/>

Options (Select One or More)		
Suffix	Description	
-B	Lift Out Bucket	<input type="checkbox"/>
-DI	Dual Inlet	<input type="checkbox"/>
-E	Initial Supply of Biomix Powder 2 lbs	<input type="checkbox"/>
-F	Flange	<input type="checkbox"/>
-FC	Flange w/ Mem. Clamp	<input type="checkbox"/>
-HDC	Heavy Duty Cover	<input type="checkbox"/>
-IP	Injection Port (specify location)	<input type="checkbox"/>
-O	Inlet & Outlet other than standard	<input type="checkbox"/>
-SS	Stainless Steel	<input type="checkbox"/>
-T	Threaded Connections	<input type="checkbox"/>

Optional Inlet/Outlet Sizes (When -O is selected above)		
Suffix	Description	
-2	2"(51) Inlet/Outlet	<input type="checkbox"/>
-3	3"(76) Inlet/Outlet	<input type="checkbox"/>
-4	4"(102) Inlet/Outlet	<input type="checkbox"/>
-6	6"(152) Inlet/Outlet	<input type="checkbox"/>

Cubic Capacity of Fixtures in Inches	Interceptor Catalog Number	Grease Capacity Lbs	Flow Rate GPM	A	B	C	D	E	F
				Inlet & Outlet	Base to Center	Top to Center	Length	Width	Height
up to 6150	GI-120-L	40	20	3"(76)	7-5/8"(194)	4-1/4"(108)	34-7/8"(886)	22-7/8"(581)	11-7/8"(302)
6151 to 10750	GI-135-L	70	35	4"(102)	7"(178)	4-7/8"(124)	40-7/8"(1038)	32-7/8"(835)	11-7/8"(302)
10751 to 15400	GI-150-L	100	50	4"(102)	8-1/2"(216)	5-3/8"(137)	54-7/8"(1394)	32-7/8"(835)	13-7/8"(352)

Job Name _____ Contractor _____

Job Location _____ Contractor's P.O. No. _____

Engineer _____ Representative _____

WATTS Drainage reserves the right to modify or change product design or construction without prior notice and without incurring any obligation to make similar changes and modifications to products previously or subsequently sold. See your WATTS Drainage representative for any clarification. Dimensions are subject to manufacturing tolerances.



CANADA: 5435 North Service Road, Burlington, ON, L7L 5H7 TEL: 905-332-6718 TOLL-FREE: 1-888-208-8927 Website: www.wattsdrainage.ca

