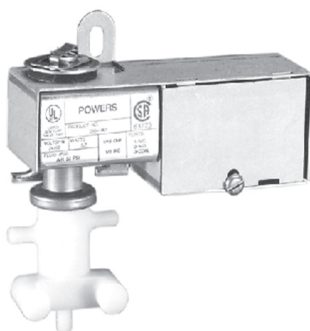


Three-way EP Valves



265-1001 Three-way
EP Valve-Junction Box Type.



265-1007 Three-way
EP Valve-Open Frame Type.

Description

A general purpose, electrically-operated, two-position three-way valve designed to control air flow, the 265 Three-Way Valve can be used for interlock between an electrical system and a pneumatic control system; available in open frame (yoke) and junction box (splice box) types.

Features

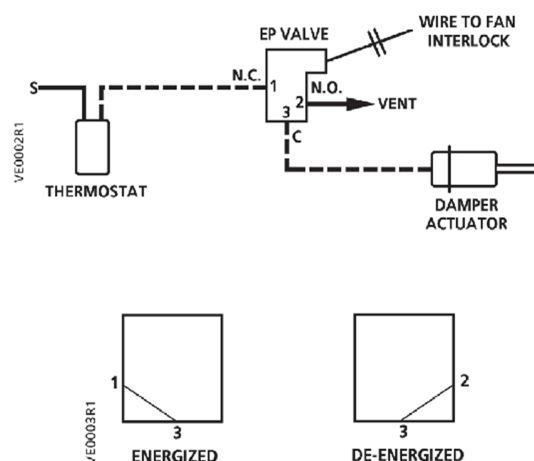
- UL and CSA approved for general purpose
- Valve may be mounted in any position
- Universal replacement for many competitive models
- Mounting holes provided in the yoke
- Wide selection of AC voltages

Applications

The 265 EP Three-way Valves are commonly-used to alternately apply pressure to and exhaust pressure from pneumatically-controlled devices, such as valves and damper actuators, by an electrical input energizing or de-energizing the solenoid of the valve.

A standard method is shown in the Application Drawings below. The input air is connected to port 1 (normally closed) and the output is connected to port 3 (common). Thus when the solenoid is energized, port 1 connects to port 3 permitting the thermostat to control the damper actuator. When the solenoid is de-energized, port 2 (normally open) is connected to port 3, exhausting air from the actuator permitting it to return to its normal position.

Application Drawings



G-15

Switches & Relays

Specifications/Product Ordering

Ambient Temperature	
Junction Box Type	0 to 100°F (0 to 38°C)
Open Frame Type	0 to 110°F (0 to 43°C)
Controlled Medium	Air only
Maximum Air Pressure	30 psig (207 kPa)
Air Flow Capacity	
Inlet Pressure	20 psig (138 kPa)
Differential Pressure	1 psi (7 kPa)
Air Flow	600 scim (164 cm³/s)
Cv Flow Factor	0.06

265	AC Voltage		Part No.	Junction Box
	60 Hz	50 Hz		
	24	—	265-1001	
	120	110	265-1002	
	208	—	265-1003	
	240	220	265-1004	
	277	—	265-1005	
	480	440	265-1006	
	24	—	265-1007	Open Frame
	120	110	265-1008	



Electrical Ratings	
Voltages	24 to 480 Vac
Power Consumption	5.7 Watts
Current Drain	
Inrush	17.3 VA
Holding	9.2 VA
Mounting Bracket	1 oval and open-ended hole; part of the yoke.
Junction Box	NEMA 1 Enclosure
Air Connections	Barbed fittings for 1/4" (6 mm) OD tubing

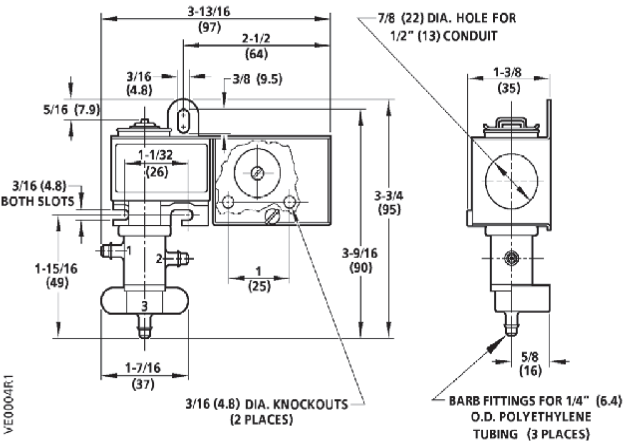
Materials	
Body	Celcon Plastic
Internal	Buna N, Copper, Stainless Steel
Shipping Weight	
Open Frame Type	0.37 lb. (0.17 kg)
Junction Box Type	0.54 lb. (0.24 kg)

Accessories
& Service Kits

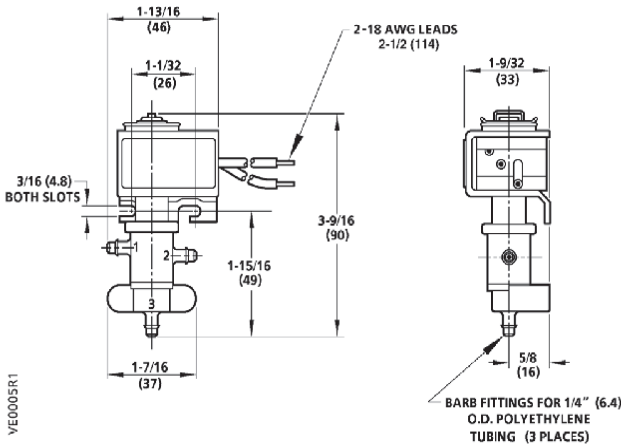
G-39

Dimensions

265-1001 to 1006
Junction Box Type



265-1007 to 1008
Open Frame Type



Dimensions shown in inches (mm).



Part No. in black box Ships same day when requested through Rapid Response™ shipping. See page 1 for details.

SIEMENS