

The Robertshaw® S-86 single and N-86 dual Water Valve Series are automatic icemaker valves for residential refrigerator icemakers. Both valve models feature an inlet fitting which connects directly to ¼" (6.35mm) tubing without an additional adaptor. The N-86 valve allows individual control of water flow through two outlets by using a single inlet for water to the door and for water to fill the icemaker.

Features and Benefits

- Direct acting armature provides high flow capacity with minimum power requirements
- Encapsulated coil provides high mechanical and dielectric strength, and is moisture resistant
- Unique armature and seat design reduce unwanted particles from entering the armature area
- Armature is designed with clearances which minimize the possibility of jamming due to foreign materials
- Bodies are made of polypro which provides high resistance to corrosion and mineral deposits
- Suitable for applications using water at temperatures up to 160°F (71°C)

REPLACEMENT INFORMATION

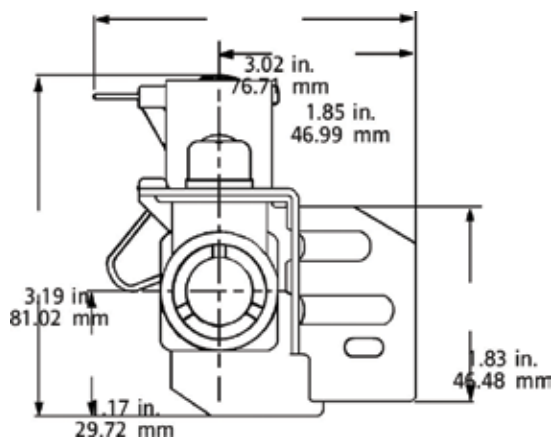
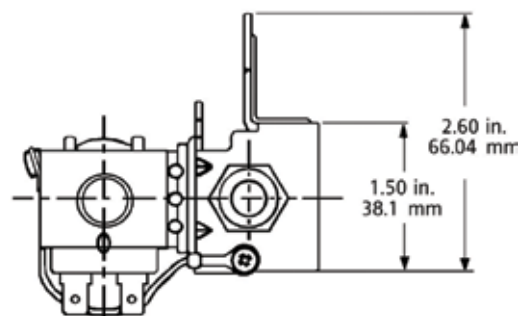
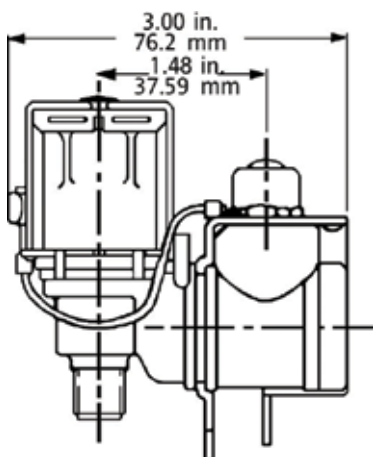
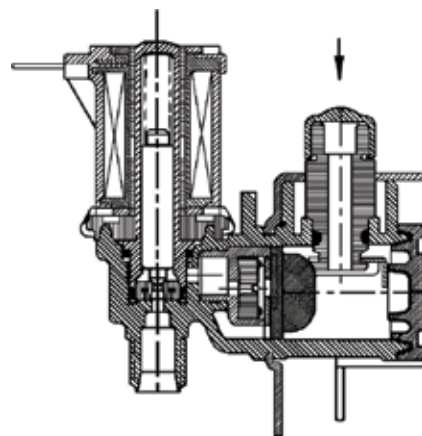
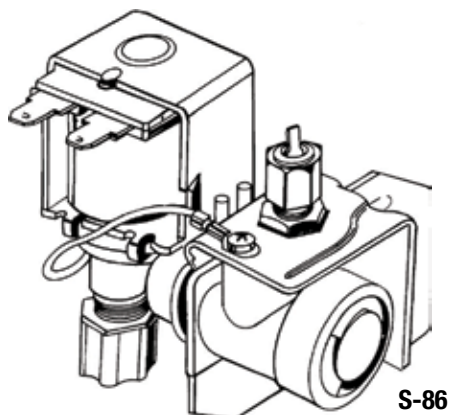
Part Numbers	Replaces	Factory Number
IMV-494	Whirlpool 2210494	K-75973
IMV-576	Whirlpool 2315576	K-78186
IMV-708	Whirlpool 2188708	K-75717

Robertshaw®

**S-86
N-86
SERIES**

**WATER
VALVES**

PRODUCT DRAWINGS

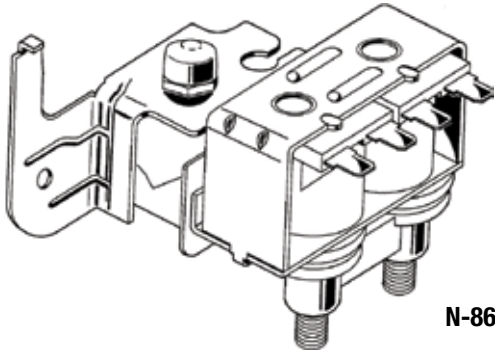


Robertshaw®

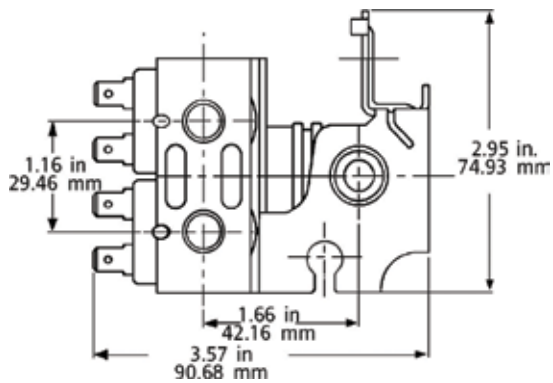
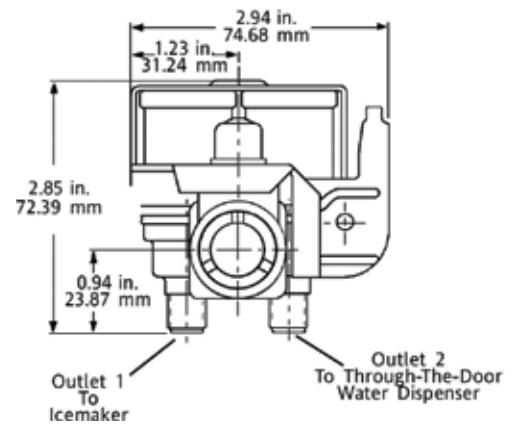
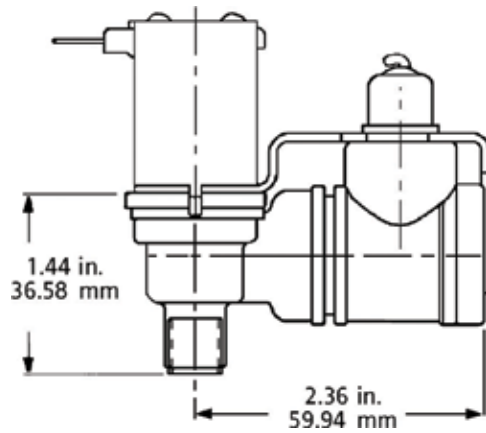
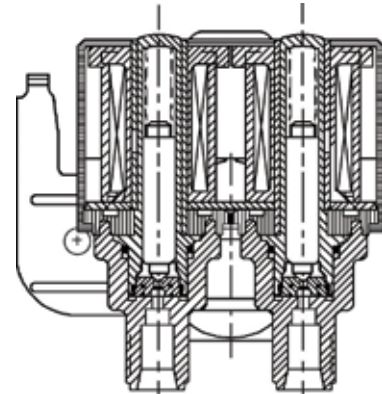
**S-86
N-86
SERIES**

**WATER
VALVES**

PRODUCT DRAWINGS



N-86





S-86 N-86 SERIES

WATER VALVES

SPECIFICATIONS

Part Numbers	Description	Flow Rate	Inlet	Outlet	Operating Pressure	Terminals	Body Material	Electrical Rating	Power
IMV-494	Residential Ice Machine Water Valve S-86	0.06 GPM to 0.60 GPM	1/4" flare, loxit or compression	7/16" 20 UNF	20 PSI to 120 PSI	1/4" Male	Polypro	120V AC 60 Hz	35 Watts
IMV-576	Residential Ice Machine Water Valve S-86	0.06 GPM to 0.60 GPM	1/4" flare, loxit or compression	7/16" 20 UNF	20 PSI to 120 PSI	1/4" Male	Polypro	120V AC 60 Hz	35 Watts
IMV-708	Residential Ice Machine Water Valve N-86 Dual	130 CC in 7.5 seconds, 22-38 CC per second	1/4" flare, loxit or compression	7/16" 20 UNF, 1/2" 20 UNF	20 PSI to 120 PSI	1/4" Male, 3/16" Male	Polypro	120V AC 50/60 Hz	35 Watts, 20 Watts

UNI-LINE®

191 E. North Avenue
Carol Stream Illinois 60188 USA
Customer Service Telephone 1.800.304.6563
Customer Service Facsimile 1.800.426.0804
HVACCustomerService@Invensys.com

For Technical Service
Telephone 1.800.445.8299
Facsimile 1.630.260.7294
TechnicalService@Invensys.com

Uni-Line® and Robertshaw® are trademarks of Robertshaw Controls Co. its subsidiaries and/or affiliated companies. All other brands mentioned may be the trademarks of their respective owners.

www.Uni-Line.com
www.InvensysControls.com
©2014 Robertshaw Controls Co.
03/14 – 150-2437