

**LUMARK**



Sustainab**LED**esign™

## Crosstour LED

Wall Mount/Floodlight Luminaire

**COOPER** Lighting



# CROSSTOUR™

**LED Wall Pack  
or Floodlight**



**Wall or Inverted Mount**



**Post or Bollard Mount**



**Pathway or Stairs**



**Floodlight**



## A New Revolution in Outdoor Lighting

Pioneered with an industry-first, universal “all-in-one” product platform, the Crosstour LED Wall Pack Series delivers energy-efficient optical control, low-profile form, universal installation and tool-less features. With a pure innovative design, Crosstour LED Wall Pack integrates super-bright LED technology while taking advantage of a stylish, slim profile and rugged die-cast aluminum design. Ultimate versatility in application allows wall or surface, post or bollard, inverted, low-level or floodlight installations.

## Superior Performance

Forward throw, optimized reflector efficiency is the driving force behind reducing operating cost while maximizing fixture spacing. Offered in small and large housing configurations, with brilliant white 5000K or neutral warm 3500K CCT, Crosstour LED Wall Pack incorporates a series of five high-performance, energy-efficient LED lumen packages. With up to 90% energy savings, compared to traditional HID products, the super-efficient 30W Crosstour LED Wall Pack system delivers up to 2650 lumens. The advanced 20W system provides up to 1430 lumens while the essential 10W system distributes an impressive 720 lumens.

## Industry-First Design

Refined quality and safety is ensured with the Crosstour LED Wall Pack universal back box and secure lock hinge. The industry's first universal back box easily adapts to virtually all standard junction boxes, without the use of adaptor plates or loose hardware. The interface hinge locks the door in place, allowing precise and stable handling when making the tool-less electrical connections.

**First-class, energy-efficient optical control, easy universal installation, low-profile design, five lumen selections and enhanced safety features confirm the Crosstour LED Wall Pack Series as the absolute choice for outdoor illumination.**



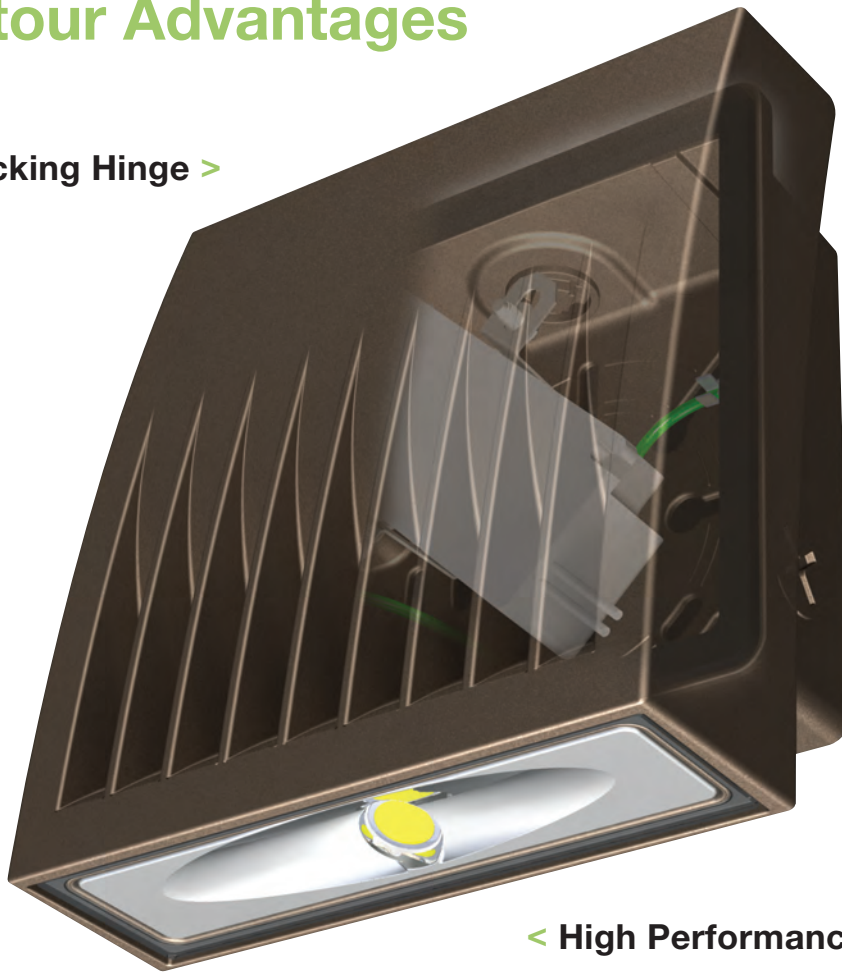
Patent Pending



Knuckle Floodlight

# Crosstour Advantages

**Secure Locking Hinge >**



**< Universal Back Box**

**< High Performance LED**

## High Performance LED

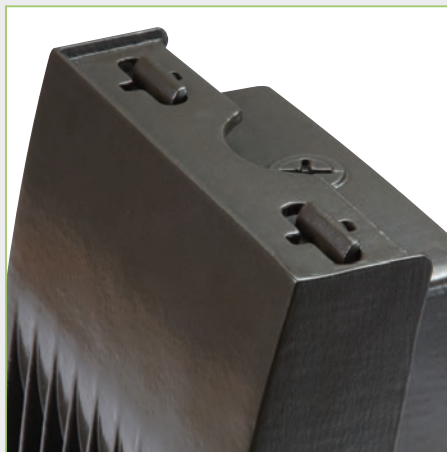
High quality LEDs coupled with effective thermal management and superior optical design provide long-lasting, energy-efficient performance. Select from 10W, 20W or 30W models.

## Door Locking Hinge

Secure lock interface hinge design allows the door to safely seat on top of the back box while making the tool-less electrical connections with supplied lever-lock connectors. Single-point captive screw secures door.

## Universal Back Box

Universal back box mounts to standard 3-1/2" to 4" round and octagonal, 4" square, single gang and masonry junction boxes. Three conduit openings allow for thru-branch wiring.



# Floodlighting Features



< Visor and Vandal Shield

< Mounts to Universal Back Box

Fully Adjustable >



Trunnion Floodlight

## Fully Adjustable

Visual 15° adjustment indicators allow for 180° field rotation of the floodlight assembly. The knuckle base is supplied with a tooth-lock adjustment and the trunnion base utilizes an interlocking slide adjustment.



Knuckle Base



Trunnion Base

## Visor and Vandal Shield

Heavy-duty steel top visors control glare and spill light. 1/8" thick UV stabilized impact guard shields glass lens when mounted at low levels.



## Direct Mount Flood Base

Floodlight accessory kits attach directly to the 10W, 20W and 30W Crosstour LED back box converting the unit from a wall mount to a floodlight luminaire suitable for ground or wall mount applications.





# Design Performance Features

## Construction

- Slim, low-profile design extends 4" from surface.
- Rugged die-cast aluminum construction. Hinged removable door with single-point stainless captive screw.
- Universal back box mounts to standard 3-1/2" to 4" round and octagonal, 4" square, single gang and masonry junction boxes.



- Key hole gasket adapts to junction box or wall. Back box includes three 1/2" NPT threaded conduit entry points.
- UL listed for wet location and ground mount; IP66 rated.
- Super durable TGIC carbon bronze or summit white polyester powder coat paint.



Carbon Bronze



Summit White

## Floodlight Kit

- Sturdy die-cast aluminum knuckle or steel trunnion base.
- Mounts directly to the Crosstour LED back box.
- Knuckle base includes tooth-lock adjustment and locking nut.
- Trunnion base includes interlocking slide adjustment and a 12" SOOW wet location rated cord.
- Fully adjustable base allows for 180° field rotation. Includes visual 15° adjustment indicators.
- Top visors, impact shields and hardware included.
- Knuckle and trunnion configurations are 2G vibration rated.

## Electrical

- 10W models: -40°C to 40°C, 120V, 50/60 Hz.
- 20W and 30W models: -30°C to 40°C, 120-277V, 347V, 50/60 Hz.
- LED driver mounts to housing for optimal heat sinking.
- Integral electronic LED driver incorporates surge protection.
- Back box is suitable as an electrical wiring compartment.
- Three 1/2" conduit entry points allow for thru-branch wiring.
- LED maintains >70% of initial light output after 50,000 hours.
- Optional high ambient 50°C temperature rated models available.

## Optical

- Silicone sealed LED optical chamber with impact-resistant tempered glass.
- Custom-engineered, mirrored anodized reflector.
- Thermally optimized LED in 5000K or 3500K CCT.

## Warranty

- Five-year limited warranty.

## Design Benefits



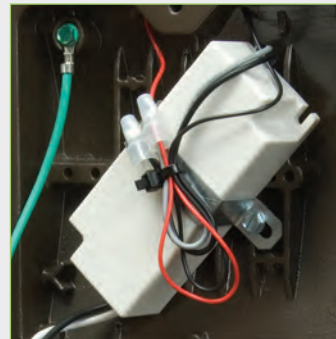
### Advanced Thermal Cooling

Cooling fins dissipate heat while quickly shedding water and debris. Sealed optical chamber prohibits contaminants from entering the light source.



### ADA Compliant Low-Profile Design

Engineered to install in multiple applications. Incorporates ADA specifications when mounted at low levels without compromising illumination.



### Energy-Efficient LED Driver

Configured with the most efficient LED driver to minimize energy consumption while maximizing fixture life.



### IP66 Ingress Protection Rated

Gasketed to seal out contaminants while allowing precise installation to junction box or wall surface.

# Three-Step Installation

## Wall Mount



### Step 1

Open fixture, mount back box to junction box or lag to wall.



### Step 2

Seat door into lock hinges and make electrical connection.



### Step 3

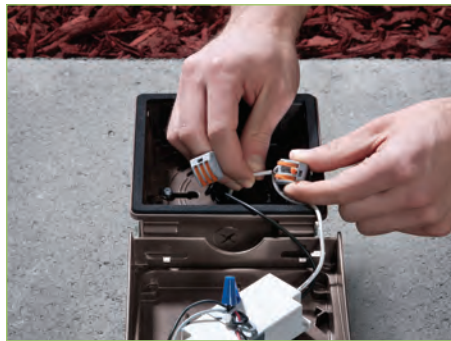
Close door and tighten captive screw.

## Floodlight (Trunnion or Knuckle Mount)



### Step 1

Install flood base and make electrical connections. Attach back box to flood base.



### Step 2

Make electrical connections inside back box.



### Step 3

Close door and install optional visor and shield. Aim and tighten.



Wall Mount

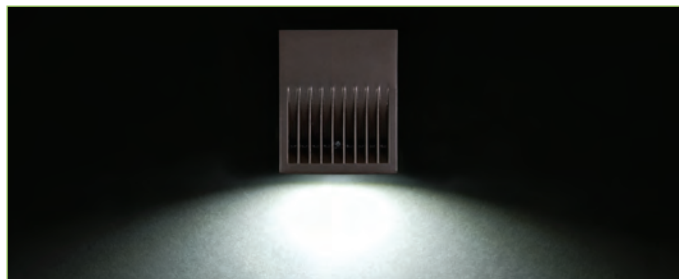


Floodlight

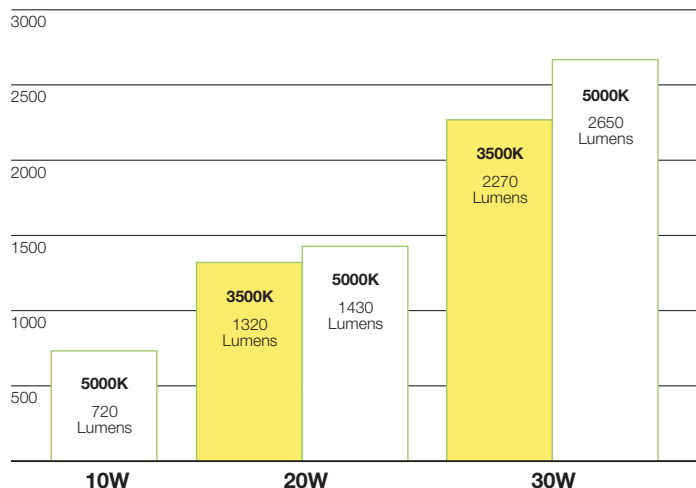
# Scalable Illumination

## Dark Sky Compliant Illumination

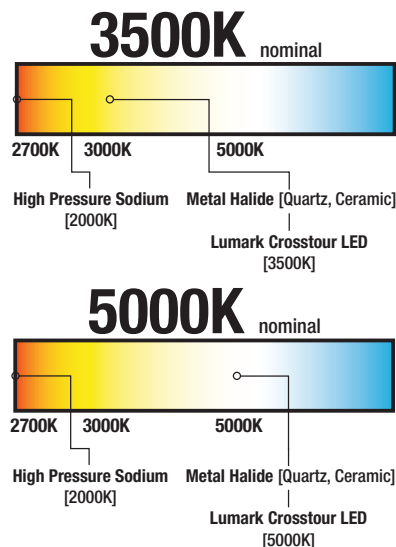
Patent pending, highly polished, mirrored optical reflector is optimized to project the light in a forward throw direction. When installed in a downlight orientation, the full cutoff door provides focused illumination with zero uplight and minimal high angle illumination while retaining superior uniformity.



## Delivered Lumens

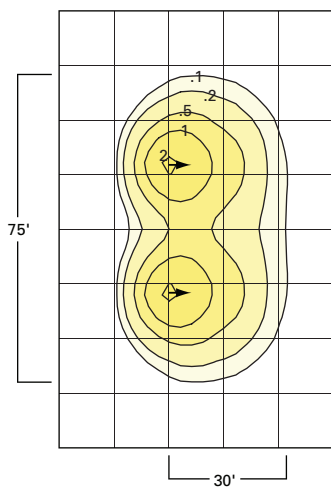


**NOTE:** Delivered lumens are estimated. See IES photometric files.



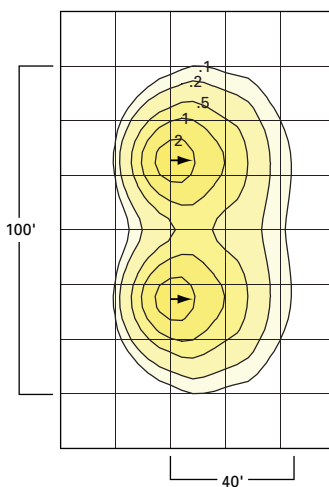
## Optical Excellence

Crosstour LED Wall Pack luminaires deliver up to 2650 lumens. Brilliant white 5000K or warm 3500K CCT color temperature LEDs provide uniform white light similar to traditional metal halide light sources. Excellent color rendering with superior thermal management and optimized reflector technology make the Crosstour LED Wall Pack Series a superior performer.



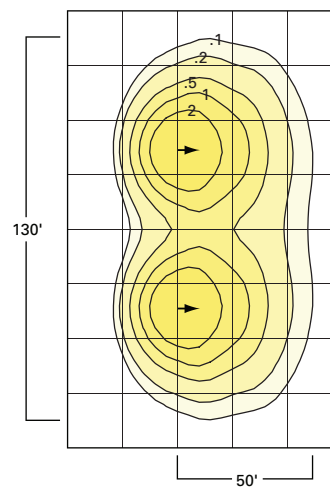
### 10W Model Typical Application

- 720 lumens
- 75' illumination distribution pattern
- 30' forward throw; 8' - 12' mounting height
- 71% street side illumination
- B.U.G. rating: B0-U0-G0
- Replaces up to 70W metal halide



### 20W Model Typical Application

- 1430 lumens
- 100' illumination distribution pattern
- 40' forward throw; 8' - 25' mounting height
- 71% street side illumination
- B.U.G. rating: B1-U0-G0
- Replaces up to 150W metal halide



### 30W Model Typical Application

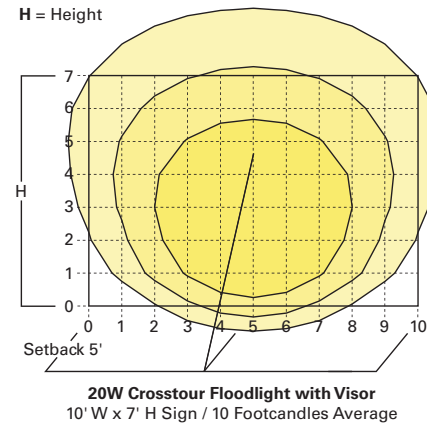
- 2650 lumens
- 130' illumination distribution pattern
- 50' forward throw; 8' - 25' mounting height
- 70% street side illumination
- B.U.G. rating: B1-U0-G0
- Replaces up to 175W metal halide



# Floodlighting Made Easy

## Floodlighting Design Guide

The Crosstour floodlight provides general area and architectural floodlighting, which is ideal for security, accent, signage, monument, statues, flag poles or for enhancing building façade architecture. Achieving effective outdoor floodlighting incorporates multiple design criteria, including proper spacing, set-back from the illuminated surface and articulated aiming.



## Signage

The recommended setback for sign illumination is a distance equal to 3/4 of the sign height. The 20W Crosstour floodlight luminaire setback for a 10' W x 7' H sign is 5'. The center aiming point is positioned to 2/3 of the sign height or at 4.6' and spacing multiple fixtures is half of the height of the sign or 4.5' on center between luminaires. Installing the top visor will control glare and spill light in all directions and will limit light travel above the intended sign.



## Façade

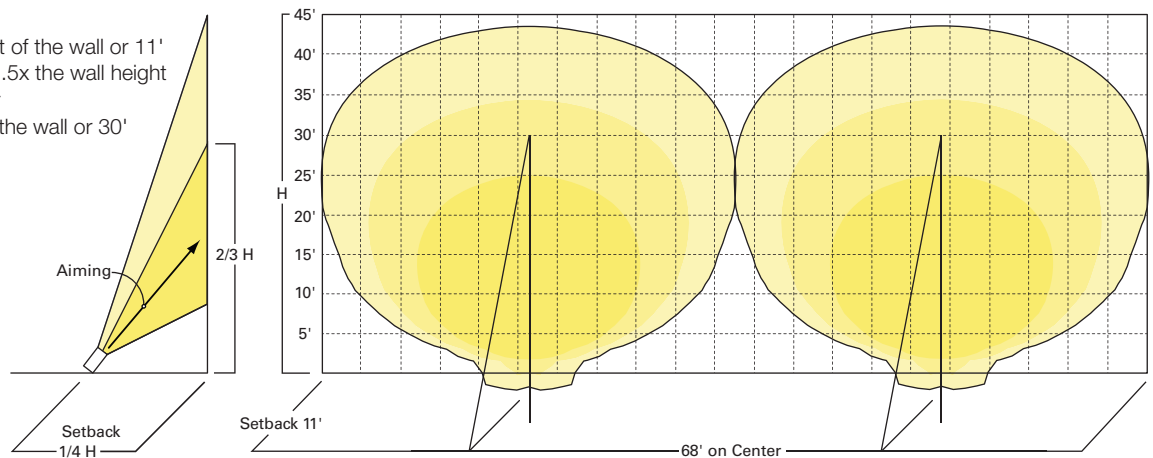
The industry standard practice setback for façade floodlighting illumination is typically positioned at 1/4 of the height of the wall. Two 30W Crosstour floodlight luminaires are setback 11' from the wall surface on a 45' building height. Spacing between fixtures should not exceed 1.5x the wall height or 68' on center. Aiming floodlighting luminaires is critical to achieving a soft wall grazing effect. Position the center beam of the Crosstour floodlight at 2/3 of the height of the wall or 30' (55° - 65° without visors and 60° to 75° with installed visors) for effective façade wall grazing.

### Typical Application

**Setback**=1/4 of the height of the wall or 11'

**Spacing**=Not to exceed 1.5x the wall height or 68' on center

**Aiming**=2/3 the height of the wall or 30'



# Energy Savings and Cross Reference

## Uniform Illumination

The patent pending LED light engine is optimized for energy-efficient performance. With effective thermal management, precise positioning of the LED package assembly and a highly reflective anodized aluminum reflector, Crosstour LED Wall Pack provides uniform illumination, enhanced safety and a comfortable visual experience.

## LED and Metal Halide Light Distribution Comparison



**NOTE:** Typical mounting heights are 8'-12' (10W model) and 8'-25' (20W and 30W models). Simulation rendering using AGi32 software.

## Reduced Energy Consumption

Operating and maintenance costs of a lighting system are dramatically impacted by the specified lamp source and electrical system. Total system input watts and fixture operating life should be the driving considerations when addressing energy consumption and total cost of ownership. Energy savings increase when energy consumption is reduced and maintenance intervals are extended.

### Annualized Energy Savings/Cost Comparison

Fixture	Hours Day / Year	Life (Hours)	Wattage	Cost / Year at \$ 0.10 kWh*	Relamp / Fixture*	Total Energy Cost / Fixture	Savings per Fixture	% Savings
10W Crosstour LED Wall Pack	9 / 3,285	50,000	13W	\$4.27	\$0	\$4.27	\$83.57	95%
70W Metal Halide Wall Pack		12,000	90W	\$29.57	\$58.28	\$87.85		
20W Crosstour LED Wall Pack	9 / 3,285	50,000	20W	\$6.57	\$0	\$6.57	\$139.88	95%
150W Metal Halide Wall Pack		7,500	190W	\$62.42	\$84.03	\$146.45		
30W Crosstour LED Wall Pack	9 / 3,285	50,000	30W	\$9.86	\$0	\$9.86	#163.91	94%
175W Metal Halide Wall Pack		6,000	210W	\$68.99	\$104.78	\$173.77		

**NOTE:** \* Cost = (Watts x 10 Hours Per Day x 365 Days per Year) / 1000 = Daily Kilowatt hour (kWh). kWh x .10 cents/kWh = Cost/year at .10 kWh. Relamp is once per every 2.5 years.

### Energy Savings/Equivalency/Cross Reference Guide

Crosstour Series	Replacement Scale	HID Equivalency	Lamp System	HID Wattage	HID Rated Average Life (Hours)	Crosstour LED Wattage <sup>2</sup>	Crosstour LED Life (Hours) <sup>3</sup>	Energy Savings
XTOR1A	35W - 100W HID 32W CFL	Up to 70W MH	35W High Pressure Sodium	46W	16,000	13W	> 50,000	72%
			50W Pulse Start Metal Halide	62W	10,000			79%
			70W Pulse Start Metal Halide	95W	12,000			86%
			32W Compact Fluorescent	36W	16,000			64%
XTOR2A	100W - 175W HID 57W CFL	Up to 150W MH	100W Pulse Start Metal Halide	115W	9,000	20W	> 50,000	83%
			150W Pulse Start Metal Halide	190W	7,500			90%
			57W Compact Fluorescent	61W	12,000			69%
XTOR3A	150W - 200W HID (2) 32W CFL	Up to 175W MH	175W Probe Start Metal Halide	210W	7,500	30W	> 50,000	86%
			(2) 32W Compact Fluorescent	68W	16,000			56%

**NOTE:** 1 Nominal lumens prior to optical and configuration losses based on 5000K CCT at 25°C ambient. 1A = 720 Lumens, 2A = 1430 Lumens, 3A = 2650 Lumens.

2 LED Wattage varies by Crosstour configuration and Kelvin CCT Color. 3 Hours of life based on 70% lumen maintenance.



# Ordering Information

**Sample Number:** XTOR2A-N-WT-PC1

Series	LED Kelvin Color <sup>2</sup>	Housing Color	Options (Specify Voltage) <sup>3</sup>	Accessories (Order Separately)
<b>XTOR1A</b> =Small Door, 10W <sup>1</sup> <b>XTOR2A</b> =Small Door, 20W <sup>2</sup> <b>XTOR3A</b> =Large Door, 30W <sup>2</sup>	___=Bright White (Standard), 5000K <b>N</b> =Neutral Warm White, 3500K	___=Carbon Bronze (Standard) <b>WT</b> =Summit White	<b>347V</b> =347V <b>PC1</b> =Photocontrol 120V <b>PC2</b> =Photocontrol 208-277V <sup>4,5</sup> <b>HA</b> =50°C High Ambient <sup>6</sup>	<b>WG/XTOR</b> =Wire Guard

**NOTES:** <sup>1</sup> 120V only. XTOR1A not available in 3500K. <sup>2</sup> Design Lights Consortium™ qualified (down mount only). Consult Design Lights Consortium website. <sup>3</sup> Photocontrols are factory installed. PC2 not available on XTOR1A models. <sup>4</sup> PC2 only available in 20W and 30W models. <sup>5</sup> Order PC2 for 347V models. <sup>6</sup> Thru-branch wiring not available with HA option or with 347V. HA models are made to order.

## Stock Ordering Information<sup>1</sup>

10W Series	20W Series	30W Series
<b>XTOR1A</b> =10W, 5000K, Carbon Bronze <b>XTOR1A-WT</b> =10W, 5000K, Summit White <b>XTOR1A-PC1</b> =10W, 5000K, Carbon Bronze, 120V PC	<b>XTOR2A</b> =20W, 5000K, Carbon Bronze <b>XTOR2A-N</b> =20W, 3500K, Carbon Bronze <b>XTOR2A-WT</b> =20W, 5000K, Summit White <b>XTOR2A-PC1</b> =20W, 5000K, Carbon Bronze, 120V PC	<b>XTOR3A</b> =30W, 5000K, Carbon Bronze <b>XTOR3A-N</b> =30W, 3500K, Carbon Bronze <b>XTOR3A-WT</b> =30W, 5000K, Summit White <b>XTOR3A-PC1</b> =30W, 5000K, Carbon Bronze, 120V PC

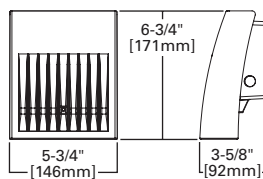
**NOTES:** <sup>1</sup> Five-day quick ship models available. See specification sheet or stock guide for a complete listing.

## Stock Ordering Information (Floodlight Accessory Kit)

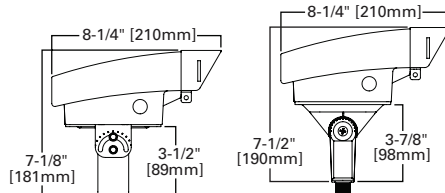
Knuckle Mount Base	Trunnion Mount Base
<b>XTORFLD-KNC</b> =Carbon Bronze Knuckle Base with Locking Nut, Small and Large Top Visors and Impact Shields <b>XTORFLD-KNC-WT</b> =Summit White Knuckle Base with Locking Nut, Small and Large Visors and Impact Shields	<b>XTORFLD-TRN</b> =Carbon Bronze Trunnion Base with 12" Wet Location SOOW Cord, Small and Large Top Visors and Impact Shields <b>XTORFLD-TRN-WT</b> =Summit White Trunnion Base with 12" Wet Location SOOW Cord, Small and Large Top Visors and Impact Shields

## Dimensions

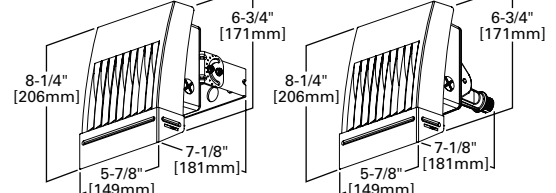
### SMALL (10W and 20W)



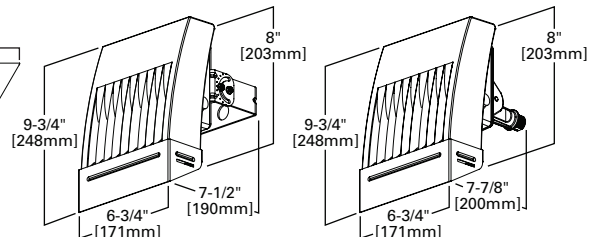
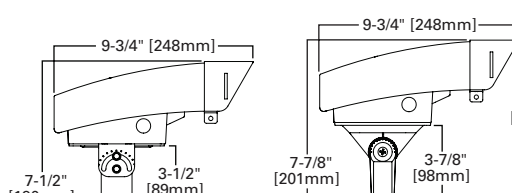
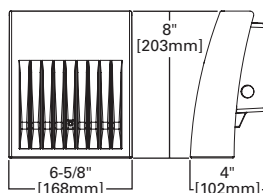
### GROUND MOUNT



### WALL MOUNT



### LARGE (30W)



## Additional Information

Compliances	Technical Data (Electronic Driver)	Shipping Data (Approximate Net Weight)
UL and cUL Wet Location Listed IP66 Ingress Protection Rated LM79 / LM80 Compliant DLC Qualified Models	ARRA Compliant ADA Compliant RoHS Compliant 40°C Ambient Temperature Rating External Supply Wiring 90°C Minimum Optional 50°C (HA) Ambient Temperature Rating	-40°C / -30°C Minimum Temperature 120V or 120-277V, 50/60 Hz 347V, 50/60 Hz 10W and 20W - 3.7 lbs. (1.7 kgs.) 30W - 5.2 lbs. (2.36 kgs.) <b>Floodlight Kits</b> 1.2 - 1.9 lbs. (0.5 - 0.9 kgs.)



Scan this QR Code to learn more about  
Crosstour LED Wall Pack / Floodlight Luminaire.



**Cooper Lighting**

Headquarters  
1121 Highway 74 South  
Peachtree City, GA 30269

P: 770-486-4800  
[www.cooperlighting.com](http://www.cooperlighting.com)

**International Sales**

Cooper Lighting  
1121 Highway 74 South  
Peachtree City, GA 30269  
P: 770-486-4800  
F: 770-486-4801

**Canada Sales**

Cooper Lighting  
5925 McLaughlin Road  
Mississauga, Ontario L5R 1B8  
P: 905-501-3000  
F: 905-501-3172

**The Cooper Lighting Family**

Halo  
Halo Commercial  
Portfolio  
IRiS  
RSA  
Metalux  
Corelite  
Neo-Ray  
Fail-Safe  
MWS  
Ametrix  
Shaper  
io  
Lumark  
McGraw-Edison  
Invue  
Lumière  
Streetworks  
AtLite  
Sure-Lites

**Domestic Distribution Facilities**

Cranbury, New Jersey  
Elk Grove Village, Illinois  
Irving, Texas  
Bloomington, California  
Peachtree City, Georgia

**Canadian Distribution Facilities**

Calgary, Alberta T2E 7V9  
Mississauga, Ontario L5R 1B8

**The Cooper Controls Family**

Greengate  
iLumin  
Zero 88  
Fifth Light Technology  
iLight (International Only)



25% PCRF

Cooper Lighting, Lumark, Crosstour and SustainabLEDdesign are valuable trademarks of Cooper Industries in the United States and other countries. You are not permitted to use the Cooper Trademarks without the prior written consent of Cooper Industries.

**Cooper Industries plc**  
600 Travis, Ste. 5600  
Houston, TX 77002-1001  
P: 713-209-8400  
[www.cooperindustries.com](http://www.cooperindustries.com)