

TECHNICAL INFORMATION BULLETIN

CIRCLINE

Ordering Information

Order code: 58986
Description: FC12T9/CW/RS/4P/STD
UPC: 69549589865
Case quantity:



Performance Data

Initial lumens (lm): 2 300
Mean lumens (lm): 1 880
Nominal efficiency (lm/W): 72
Wattage (W): 32
Colour temperature (K): 4 100
CRI: 82
Average life (hrs): 10 000

¹ The life rating indicated is based on 3 hour burning cycles under specified conditions and with ballast meeting ANSI specifications.

Lamp Characteristics

Shape: T9 Circline
Base: G10q-4
Diameter: 1 3/16 in. (30 mm)
Nominal length: 12 in. (305 mm)
Starting method: Rapid Start
TCLP compliant: Yes
Phosphor composition: Triphosphor
Cathode guard: Yes
Nominal lamp operating frequency (Hz): 60
² Minimum starting temperature (°C): -10
Operate on electronic or magnetic ballasts

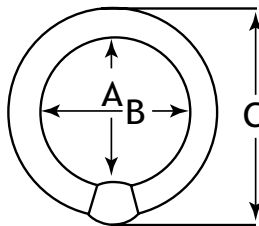
Benefits

One system Lamp/Ballast Warranty.
Extended lamp warranty from 2 to 3 years and ballast warranty from 3 to 5 years.



² The minimum starting temperature is a function of the ballast. The minimum starting temperature is based on a STANDARD brand T9 Instant Start ballast.

Dimensions



A Max
Inner diameter
from base to tube

B Min/B Max
Inner diameter from
tube to tube

C Max
Outer overall diameter from
base to tube

32 watts

9.64 in.
245.0 mm

9.42 in./ 9.54 in.
237.5 mm/ 242.5 mm

11.83 in./ 300.5 mm

Spectral distribution

