

TECHNICAL INFORMATION BULLETIN

CIRCLINE

Ordering Information

Order code: 58983
Description: FC8T9/CW/RS/4P/STD
UPC: 69549589834
Case quantity:



Performance Data

Initial lumens (lm): 1 350
Mean lumens (lm): 1 110
Nominal efficiency (lm/W): 61
Wattage (W): 22
Colour temperature (K): 4 100
CRI: 82
Average life (hrs): 10 000

1 The life rating indicated is based on 3 hour burning cycles under specified conditions and with ballast meeting ANSI specifications.

Lamp Characteristics

Shape: T9 Circline
Base: G10q-4
Diameter: 1 ³/₁₆ in. (30 mm)
Nominal length: 8 ⁹/₃₂ in. (210 mm)
Starting method: Rapid Start
TCLP compliant: Yes
Phosphor composition: Triphosphor
Cathode guard: Yes
Nominal lamp operating frequency (Hz): 60
² Minimum starting temperature (°C): -10
Operate on electronic or magnetic ballasts

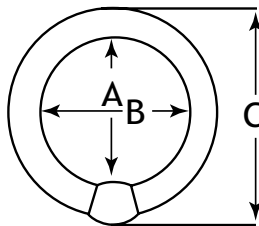
Benefits

One system Lamp/Ballast Warranty.
Extended lamp warranty from 2 to 3 years and ballast warranty from 3 to 5 years.



2 The minimum starting temperature is a function of the ballast. The minimum starting temperature is based on a STANDARD brand T9 Instant Start ballast.

Dimensions



A Max
Inner diameter
from base to tube

B Min/B Max
Inner diameter from
tube to tube

C Max
Outer overall diameter from
base to tube

22 watts

6.06 in.
154.0 mm

5.82 in./ 11.91 in.
148.0 mm/ 153.0 mm

8.28 in./ 210.5 mm

Spectral distribution

