



# Water Coolers



## BARRIER-FREE VERSACOOLER® II Energy and Water Conservation Technology

### PG8SBF (PG8AC VersaFiller® Combination)

#### Suggested Specification

PG8SBF shall deliver 8.0 gph of 50° F degree water at 90° F ambient and 80° F inlet water. Model P8SBF shall include P8AC and the VersaFiller Sports Bottle Filler with independent manual activation; lower unit must have front and side push pads to activate the manual flow of water for the cooler. VersaFiller alcove and activation button contain Freshield, WHICH UTILIZES a silver-based antimicrobial compound that reduces the growth of micro-organisms and mildew to protect the surfaces from discoloration, odors and degradation. Basin shall be designed to eliminate splashing and standing water. Water Saver Bubbler shall reduce waste water by 50%. Bubbler shall be a Low Flow, one piece construction with flexible guard and operate between 20 and 120 PSI. VersaFiller cabinet finish is Brushed Stainless Steel. P8AC cabinet finish shall be Sandstone Powder Coated paint on galvanized steel or brushed stainless steel. Cooling system shall use R-134a refrigerant. Shall comply with ANSI A117.1 and ADA. Shall be listed by Underwriters' Laboratories to U.S. and Canadian standards. Shall comply with ANSI/NSF 61G.

Water Cooler delivers 8.0 gallons of chilled drinking water per hour. These models satisfy CABO/ANSI A117.1 and these water coolers comply with ADA requirements when properly installed. Units also meet guidelines for children's accessibility providing the floor to orifice height is 30 inches and proper clear floor space is provided for frontal approach.

#### Standard Features

- > Built-in 100 micron strainer stops particles before they enter the waterway
- > Waterways are Lead-Free in Materials & Construction
- > Flexible, one-piece Water Saver Bubbler guard
- > Heavy Duty Galvanized Steel Frame
- > High Efficiency Cooling Tank and Coil
- > Refrigerant R-134a
- > Product Certified to NSF/ANSI Standard 61, Annex G (AB1953)
- > Four Push Pad Manual Activation on lower water cooler
- > External Stream Height Adjustment on Lower Unit
- > Independent Mechanical Activation VersaFiller

#### Finishes

- > VersaFiller Cabinet Finish is Brushed Stainless Steel
- > Standard Versacooler (bottom unit) Cabinet Finish: Sandstone Powder Coated Paint on Galvanized Steel
- > Optional finishes (at additional cost): Brushed Stainless Steel

VersaFiller alcove is tall enough to accommodate most sizes of refillable water bottles on the market.



Energy & Water Conservation Model

#### Options (at additional cost)

- > One-Piece Vandal Resistant Bubbler
- > Oasis Green Filtration System

#### Installation

- > Prior to roughing consult with local, state, and federal codes for proper mounting height.
- > Shipped with complete instructions and wall mounting brackets.
- > Removable side and front panels provide easy access for installation



ADA Compliant when properly installed.



Components in this fountain are lead free as defined by the Safe Drinking Water Act Amendments of 1986, and the Lead Contamination Control Act of 1988.

**Powder Coated Finish Warranty** (Continental limits of the United States and Canada): Three years on the powder coat finish provided that the water cooler has not been subjected to abuse, misuse, or alteration.

**Limited 5-Year Warranty** (Continental limits of the United States and Canada): Five years on the sealed refrigeration system and most component parts. Detailed warranty certificate enclosed with each water cooler; sample available upon request.

**Export Warranty:** One year on component parts. Detailed warranty certificate enclosed with each drinking fountain; sample copy available upon request.

Product Certified to NSF/ANSI Standard 61, Annex G (weighted average lead content of  $\leq 0.25\%$ ) and is in compliance with California's Health & Safety Code Section 116875 (commonly known as AB1953). Models covered by this specification comply with all known Plumbing Codes. Listed by Underwriters' Laboratories to U.S. and Canadian standards.

See other side for a complete list of other Oasis VersaFiller Combinations



Model	50° F Drinking Water 90° F Ambient Air Temp*			Hot 'N Cold™ Model	115 Volts, 60 HZ			Glass Filler Acc. Option	Cabinet Color Finish	Net Wt. Approx.
	Rated Capacity GPH	Base Rate GPH	Pre-Cooler		Compr. HP	Full Load Amps	Rated Watts			
PG8SBF	8.0	8.0	No	No	1/4	4.6	460	No	Yes	59 Lbs.

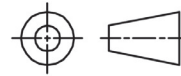
\* Industry Standard Rating Condition 80° F inlet water temperature.

Specifications subject to change without notice

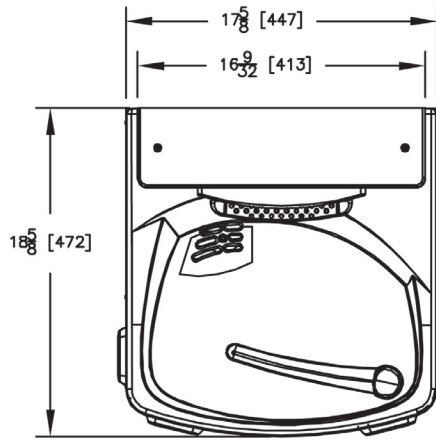
# OASIS® PG8SBF: Versacooler® II Model PG8AC with VersaFiller®

High Efficient positive start compressor and cooling system with Water Saver Bubbler

THIRD ANGLE PROJECTION

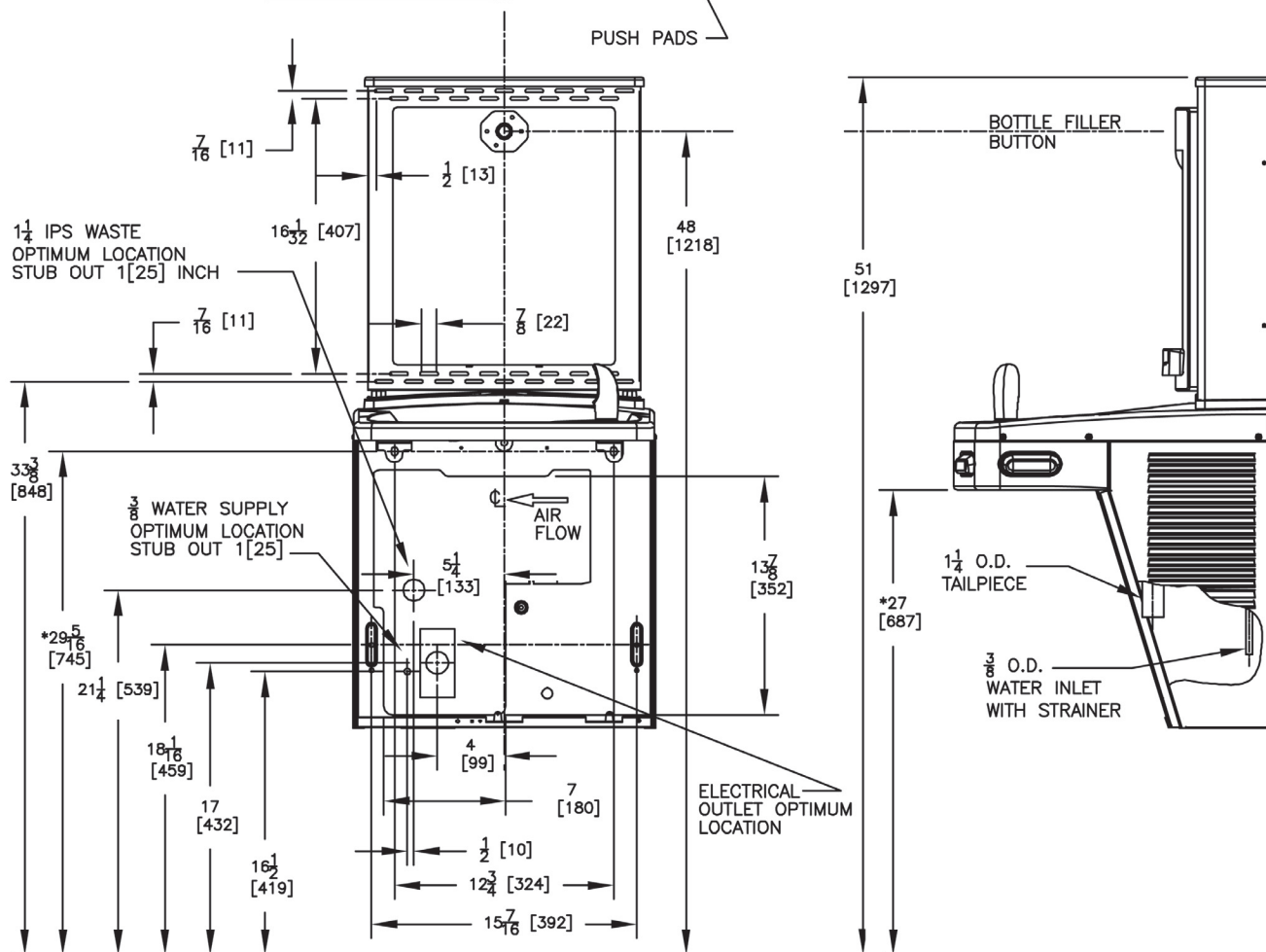


ROUGHING-IN  
AND  
DIMENSIONAL DRAWING



## NOTES:

1. TRAP, STOP VALVE AND ELECTRICAL OUTLET NOT FURNISHED.
2. ALLOW 4 INCHES [102 MM] MIN. PER SIDE FOR VENTILATION.
- \*3. RECOMMENDED ADULT BARRIER FREE HEIGHT INSTALLATION SHOWN. REDUCE HEIGHT BY 3 INCHES FOR INSTALLATIONS USED PRIMARILY BY CHILDREN AGES 12 AND YOUNGER. UNIT SHALL ALSO HAVE A MINIMUM CLEAR FLOOR SPACE 30[760] BY 48[1220]. ADJUST VERTICAL DIMENSIONS AS REQ'D TO COMPLY WITH FEDERAL, STATE, AND LOCAL CODES.
4. ALL DIMENSIONS ARE IN INCHES. DIMENSIONS IN BRACKETS [ ] ARE IN MILLIMETERS.



## Available Oasis Versacooler® II Models with VersaFiller Combination

P8AC with VersaFiller.....P8SBF  
P8ACSL with VersaFiller .....P8SBFSL  
PG8AC with VersaFiller.....PG8SBF  
PG8ACSL with VersaFiller.....PG8SBFSL  
PF8AC with VersaFiller.....PF8SBF

PF8ACSL with VersaFiller .... PF8SBFSL  
PV8AC with VersaFiller ..... PV8SBF  
PV8ACSL with VersaFiller .... PV8SBFSL  
PAC with VersaFiller ..... PSBF  
PACSL with VersaFiller..... PSBFSL

PGAC with VersaFiller..... PGSBF  
PGACSL with VersaFiller.... PGSBFSL  
PFAC with VersaFiller..... PFSBF  
PFACSL with VersaFiller .... PFSBFSL  
PVAC with VersaFiller..... PVSBF  
PVACSL with VersaFiller .... PVSBFSL

Models listed above are Sandstone powder coated paint on galvanized steel. Stainless steel models are available at extra cost.