

Actuators: EFB24-SR(-S) EFX24-SR(-S) AFB24-SR(-S) AFX24-SR(-S) AF24-SR US AFA24-SR US
NFB24-SR(-S) NFX24-SR(-S) LF24-SR(-S) US TF24-SR(-S) US

Hazard Identification

Warnings and Cautions appear at appropriate sections throughout this manual. Read these carefully.

CAUTION

Indicates a potentially hazardous situation which, if not avoided, may result in minor or moderate injury. It may also be used to alert against unsafe practices.



Equipment damage!

Up to four actuators may be connected in parallel if not mechanically linked. Power consumption and input impedance must be observed.



WARNING

Live Electrical Components!

During installation, testing, servicing and troubleshooting of this product, it may be necessary to work with live electrical components. Have a qualified licensed electrician or other individual who has been properly trained in handling live electrical components perform these tasks. Failure to follow all electrical safety precautions when exposed to live electrical components could result in death or serious injury.



INSTALLATION NOTES



Actuators may also be powered by 24 VDC.



Actuators with plenum rated cable do not have numbers on wires; use color codes instead. Actuators with appliance cables are numbered.



Only connect common to neg. (-) leg of control circuits.



APPLICATION NOTES



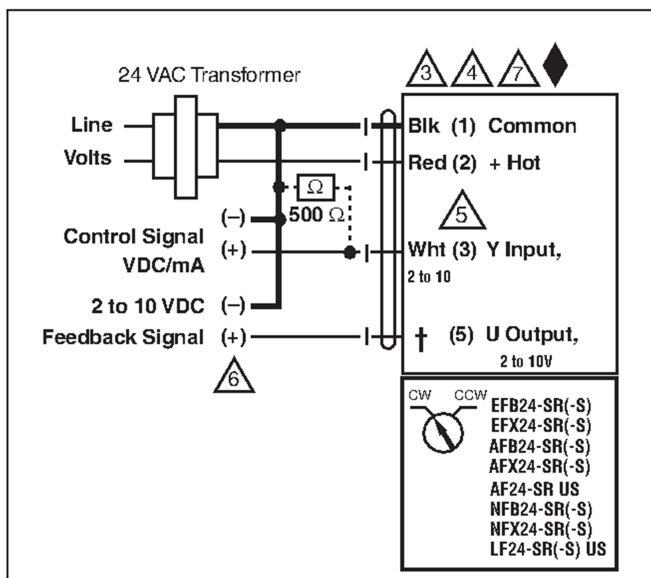
Meets cULus requirements without the need of an electrical ground connection.



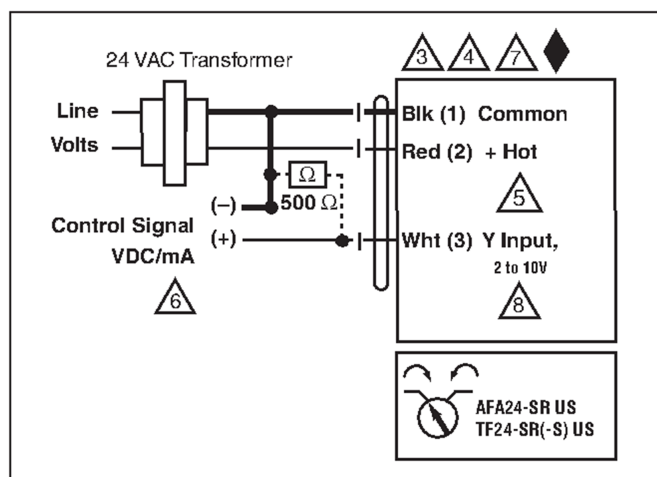
A 500 Ω resistor converts the 4 to 20 mA control signal to 2 to 10 VDC.



The AFA24-SR US and TF24-SR(-S) US are supplied without position feedback.



Actuator	Wire Number	Color
EFB24-SR(-S)	5	Org
EFX24-SR(-S)	5	Org
AFB24-SR(-S)	5	Org
AFX24-SR(-S)	5	Org
AF24-SR US	5	Wht
NFB24-SR(-S)	5	Org
NFX24-SR(-S)	5	Org
LF24-SR US	5	Grn
LF24-SR-S US	5	Wht



Refer to page 26 for auxiliary switch (-S models) wiring.