



# POWERVENTPRO Series



**In-Line Centrifugal Duct Exhaust or Supply Fans**  
Cost effective ventilation solutions from Soler & Palau, Inc.



### ■ POWERVENTPRO (PVP) Series

The POWERVENTPRO (PVP) series of direct drive centrifugal in-line duct ventilation fans; consists of six model sizes 4", 5", 6", 8" & 10" respectively. All models are designed for direct connection in-line with standard diameter circular ducting. Airflow performance values range from 108 CFM (PVP-4L) up to 618 CFM (PVP-10).

All PVP fan models incorporate a powerful external rotor motor that has

been factory matched to a non-stalling backward curved centrifugal fan wheel.

This powerful combination enables the PVP fans to deliver exceptional airflow performances against the high static pressures typically found in ducted ventilation systems. All motors within the PVP fans are fully speed controllable using voltage or frequency control regulators.

The PVP series of duct exhaust or supply fans have been specifically designed for simple installation and many years of maintenance free operation. The PVP fans can be mounted at any angle and at any point along the duct. The totally enclosed motor design allows the PVP fans to operate in high moisture, lint and dust laden air. All models are manufactured with high quality materials and workmanship that is

highlighted by a comprehensive five (5) year warranty.

All PVP fans feature a corrosion resistant galvanized steel casing and are supplied with a strong mounting bracket and prewired remotely mounted wiring junction box. The fan is connected to the wiring junction box with a UL Listed flexible conduit that provides the installer with a completely flexible choice for positioning and installation.



### ■ Applications

The PVP fans are ideally suited for a wide range of residential, commercial and industrial exhaust and intake ventilation applications. Typical applications would include the following...

**Residential** – Bathrooms, Toilets and Utility Room Exhaust,

Air Transfer...



**Commercial** – Offices, Conference Rooms, Bars, Restaurants, Cafeterias, Locker Room Exhaust and Make-Up Air Applications ...



**Industrial** – Smoking Area Ventilation, Spot Ventilation and Equipment Cooling...





## ■ POWERVENTPRO – Airflow Performance

Trade name	Model No.	Nom. RPM	Volts	Max. Watts	CFM v Static Pressure (Ps) Ins.WG									Max. Ps.	Duct Dia. Ins.
					0"	0.125"	0.25"	0.375"	0.5"	0.75"	1.0"	1.25"	1.5"		
POWERVENTPRO-4L	PVP-4L	1400	115	57	108	100	92	85	78	66	52	33	18	1.70	4"
POWERVENTPRO-4	PVP-4	2880	115	84	153	142	130	120	111	96	80	63	34	1.85	4"
POWERVENTPRO-5	PVP-5	2745	115	85	206	190	170	153	135	110	88	62	33	1.77	5"
POWERVENTPRO-6	PVP-6	3075	115	149	438	420	395	368	335	285	240	203	161	2.29	6"
POWERVENTPRO-8	PVP-8	2930	115	180	544	515	485	446	415	360	312	273	230	2.64	8"
POWERVENTPRO-10	PVP-10	3045	115	214	618	595	570	540	510	450	390	340	297	2.80	10"

Performance shown is for installation type D – Ducted Inlet, Ducted Outlet. Speed shown (rpm) is nominal. Performance is based on actual speed of test. Performance ratings do not include the effects of appurtenances in the airstream. The performance figures shown have been corrected to standard air density.

### ON REQUEST:

Soler & Palau, Inc can supply airflow performance data as Certified by the Home Ventilating Institute (HVI). **The POWERVENTPRO series has been tested and certified in accordance with the HVI air delivery ratings for in-line fans at 0.2" static pressure.**



Soler & Palau certifies that the PVP range shown herein is licensed to bear the AMCA Seal. The rating shown are based on tests and procedures performed in accordance with AMCA Publication 211 and comply with the requirements of the AMCA Certified Ratings Program.

## ■ POWERVENTPRO – Technical Specifications

All six PVP model sizes (PVP-4L, 4, 5, 6, 8 & 10) include the following specifications:

### Casing

- Manufactured from high grade pressed galvanized steel.
- Extra long inlet and discharge collars make installation quick and trouble free.
- Supplied with a strong galvanized steel mounting bracket.
- Supplied with a remote mounting, prewired wiring junction box.

### Wheel / Impeller

- Backward curved centrifugal type.

- Factory matched to an external rotor motor and dynamically balanced to eliminate vibration.

### Motor

- Totally enclosed permanent split capacitor start and run external rotor motors.
- 115V 60Hz (single phase) electrical connection.
- Permanently sealed, self lubricating precision ball bearings.
- Safety Thermal Overload Protection Cut-Out (Automatic Reset Type).

### Accessories

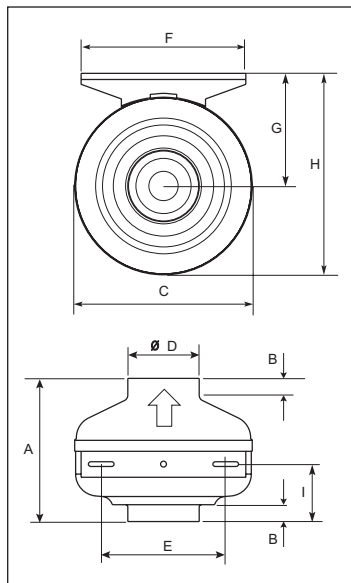
- A wide range of accessories is available to complete the most demanding installation.

### Code Approval

- All models have been independently safety tested by Underwriters Laboratories, Inc and are UL and cUL Listed.
- Independently tested for Airflow and Sound. The PVP range is licensed to bear the AMCA seal for Air performance.
- The PVP product range is certified by the Home Ventilating Institute (HVI) for Air Performance.



## ■ Dimensions (inches)



Type	A	B	C	D	E	F	G	H	I	Weight lbs
PVP-4L/4	7 5/8	1	9 1/2	3 7/8	6 11/16	8 7/8	6 1/16	10 13/16	3 1/4	6.6
PVP-5	7 5/8	1	9 1/2	4 7/8	6 11/16	8 7/8	6 1/16	10 13/16	3 7/16	6.6
PVP-6	8 1/2	1	13 1/8	5 7/8	6 11/16	8 7/8	7 7/8	14 3/8	3	11.1
PVP-8	8 1/2	1	13 1/8	7 7/8	6 11/16	8 7/8	7 7/8	14 3/8	3 11/16	11.1
PVP-10	8 1/2	1	13 1/8	9 7/8	6 11/16	8 7/8	7 7/8	14 3/8	3 1/4	13.2

All dimensions in inches.

## ■ Electrical Accessories



**SP-REG 6:** Electronic, 120V 60Hz  
Speed Control Regulator for  
models PVP-4L, 4, 5, 6, 8 & 10.

## ■ Mounting Accessories



POWERVENTPRO FAN	CIRCULAR EXHAUST/SUPPLY DIFFUSER	BACKDRAFT DAMPER	DUCT MOUNTING CLAMPS	WORM DRIVE CLIP.	FLEXIBLE AL. DUCTING	INSULATED FLEX. AL. DUCT.	LOUVRE SHUTTERS.
Stock Ref.	Stock Ref.	Stock Ref.	Stock Ref.	Stock Ref.	Stock Ref.	Stock Ref.	Stock Ref.
PVP-4/4L	BOC-100	CAR-100	ACOP-VENT 100	CX80/125	GSA-100	GSI-100	PER-100 W
PVP-5	N/A	CAR-125	ACOP-VENT 125	CX80/125	N/A	N/A	PER-125 W
PVP-6	BOC-150	CAR-150	ACOP-VENT 150	CX125/215	N/A	N/A	PER-150 W
PVP-8	N/A	CAR-200	ACOP-VENT 200	CX125/215	N/A	N/A	PER-200 W
PVP-10	N/A	CAR-250	ACOP-VENT 250	CX315	N/A	N/A	PER-250 W

D.L. B-22080-04

**SOLER & PALAU, INC.**

16 Chaplin Road, Unit #903 • P.O. BOX 637, Pine Brook, New Jersey. 07058

Tel: (973) 439-1001 • Fax: (973) 439-1002

E-mail: [sales@soler-palauinc.com](mailto:sales@soler-palauinc.com) • Web Page: [www.soler-palauinc.com](http://www.soler-palauinc.com)