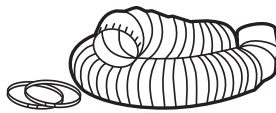


Use and Care Guide

All Metal Hook-up Kit



Safety Information



WARNING: To reduce the risk of fire or injury to persons; follow basic precautions, including the following:

- 1) For use with clothes dryers only; do not use for any other purposes.
- 2) Keep the area around the exhaust opening and adjacent surrounding areas free from the accumulation of lint, dust, and dirt.
- 3) The interior of the exhaust duct should be cleaned periodically by qualified service personnel.
- 4) A gas dryer must always be vented outdoors.
- 5) Regularly inspect the exhaust duct to be sure that it has not become crushed or otherwise restricted.

SAVE THESE INSTRUCTIONS

NOTICE:

- The clothes dryer shall not be exhausted into a chimney, a wall, a ceiling, or a concealed space of a building.
- Screws which may catch lint shall not be used to secure duct parts together.
- Flexible ducts are to be extended to their full length; any excess duct is to be removed and the duct is to be kept as straight as possible.
- Local building codes shall be followed for installations.
- The maximum length of the duct is 8 ft. No interconnection between ducts is intended.

HARDWARE INCLUDED



All metal dryer hook-up kit



Wormgear clamps (2)

TOOLS REQUIRED

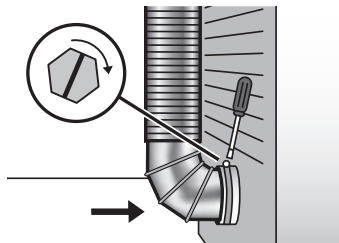


Screwdriver

Installation

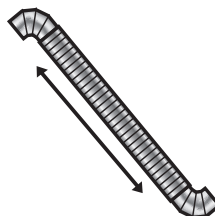
1 SECURING THE METAL ELBOW

- Push the elbow without the crimp onto the dryer exhaust outlet and secure it using one of the 4 in. metal clamps provided in this kit.



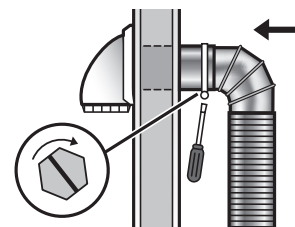
2 STRETCHING THE SEMI-RIGID DUCT

- Stretch the semi-rigid duct to the required length to reach the existing duct work, leading to the outdoors.



3 SECURING THE SECOND ELBOW

- Insert the second crimped elbow into the existing duct work and secure it using the second 4 in. metal clamp. Push the dryer back into place.



Warranty

WHAT IS COVERED

All merchandise is warranted to be free from defects in workmanship and material for one year from the date of purchase. This includes normal wear and performance failure on items. The manufacturer will replace or repair at their option.

WHAT IS NOT COVERED

This warranty only covers normal wear and performance failure. It does not cover any malfunction, performance failure, or defect arising from the misuse, abuse, neglect, or modification of the product. Any damage or malfunction inflicted upon the product by the user or other external sources, or any failure to comply with the warnings and instructions, is not covered.

For further assistance visit www.DundasJafine.com.