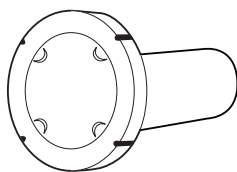


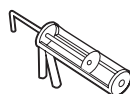
Use and Care Guide

ProShield™

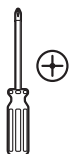
Exhaust Hood



TOOLS REQUIRED



Caulking gun

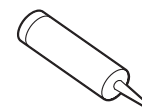


Phillips screwdriver

HARDWARE REQUIRED (NOT INCLUDED)



Screws (4)

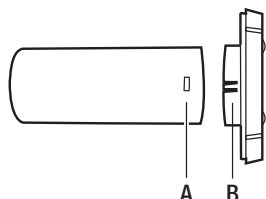


Latex caulking

Installation

1 ATTACHING THE VENT CAP TO THE PIPE

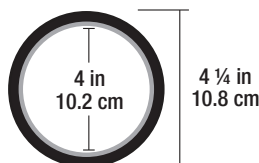
- Attach the vent cap to the pipe. Ensure the pipe fits snugly inside the collar. Align the clips on the collar (A) so they snap into the pipe slots (B).



2 CUTTING A HOLE THROUGH THE WALL

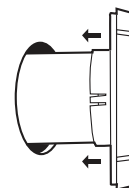
- Cut a hole through the wall $\frac{1}{4}$ in. diameter larger than the pipe. For example, to accommodate a 4 in. pipe cut a hole $4\frac{1}{4}$ in. in diameter.

NOTICE: Ensure the appropriate tool is used to cut the hole in the wall according to the type of wall material.



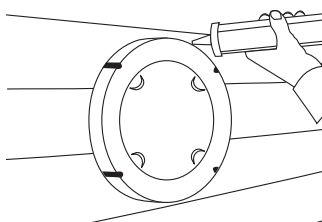
3 INSTALLING THE EXHAUST HOOD

- From the outside, pass the pipe through the hole opening until the vent cap lies flush against the outside wall surface.



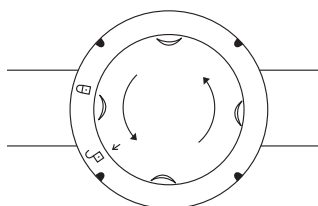
4 SECURING THE VENT CAP

- Secure the vent cap to the wall by screwing it into place and/or caulking around the reveal.



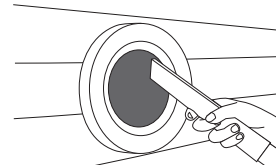
5 REMOVING THE SHIELD

- Grasp the finger pulls and twist the shield counterclockwise to align the arrow with the unlock symbol.



6 CLEANING THE VENT

- Remove the shield to clean out the lint and debris from inside the vent. Replace the shield and turn it clockwise to align the arrow with the lock symbol.



Safety Information



IMPORTANT: Vent the exhaust hood outdoors through a wall or window opening as close as possible to the dryer.

Warranty

WHAT IS COVERED

All merchandise is warranted to be free from defects in workmanship and material for one year from the date of purchase. This includes normal wear and performance failure on items. The manufacturer will replace or repair at their option.

WHAT IS NOT COVERED

This warranty only covers normal wear and performance failure. It does not cover any malfunction, performance failure, or defect arising from the misuse, abuse, neglect, or modification of the product. Any damage or malfunction inflicted upon the product by the user or other external sources, or any failure to comply with the warnings and instructions, is not covered.

For further assistance visit www.DundasJafine.com.