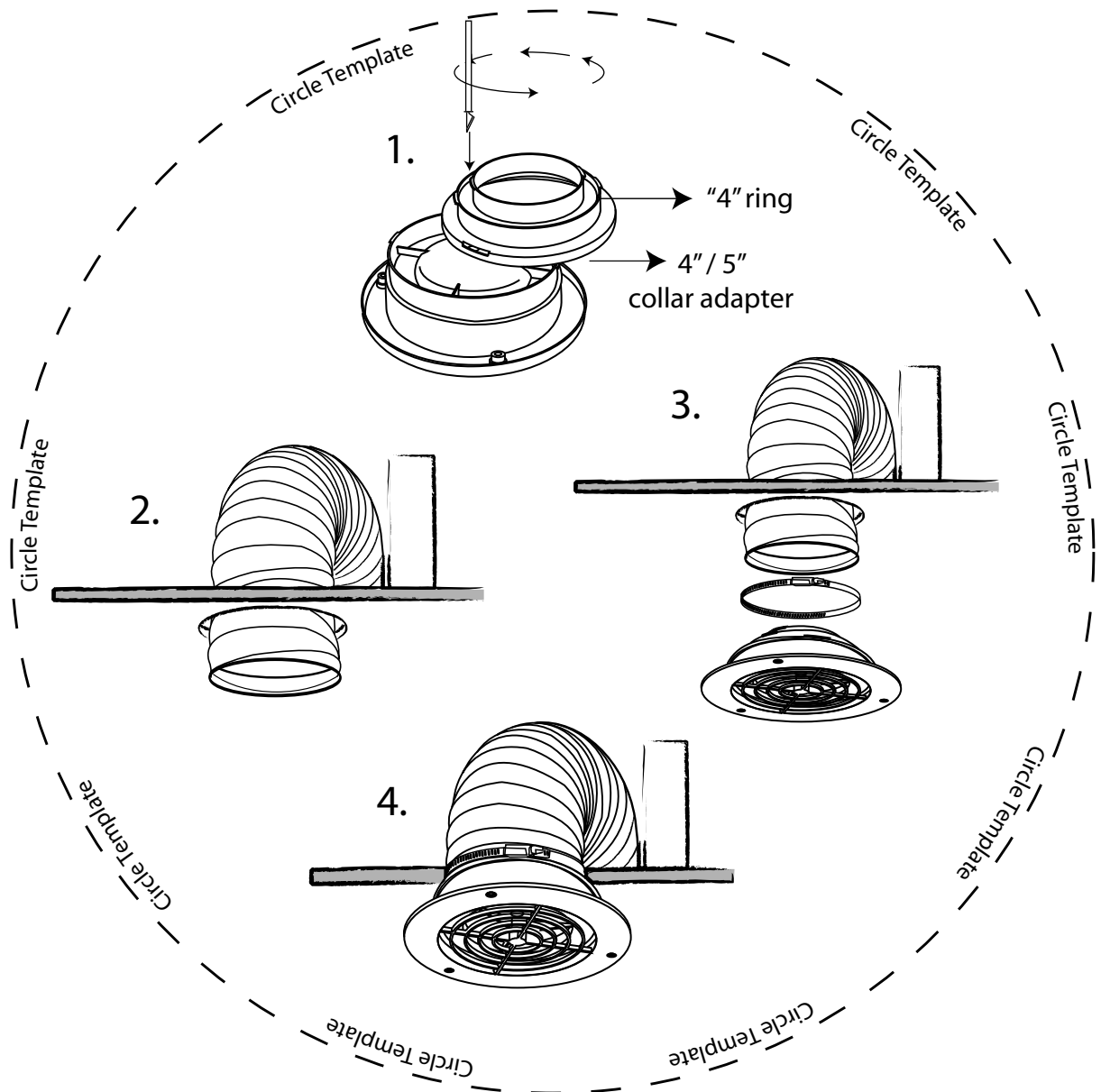


Soffit Exhaust Vent Installation Instructions

NOTE: * For use on soffit panels at least 16" wide with a vertical clearance of at least 6" high
 * Before beginning installation, make sure the soffit area is free of insulation and debris



1. If necessary, adjust your soffit exhaust vent to fit your duct size.
 - for 5" diameter duct - use a utility knife to cut off the 4" ring
 - for 6" duct - remove the 4" / 5" collar adapter
2. Cut out the circle template and position it in the midpoint of the soffit to use as a template
 - Trace the circle template and cut the hole
 - From the bathroom or kitchen fan, feed the duct through the opening
3. Connect the duct to the soffit exhaust vent and clamp to the appropriate ring size (determined in step 1)
4. Place the duct and soffit in the opening and ensure the facing is flush against the soffit panel
 - Mark and predrill the screw holes
 - Fasten the soffit exhaust vent to the soffit panel using the screws provided