



**TECK<sup>®</sup>**  
COMMERCIAL

## Electronic Exposed TECK<sup>®</sup> Flush Valves for Sloan<sup>®</sup> / Zurn<sup>®</sup> Stops

### ■ 81T201BTA-30

**Exposed Battery Operated  
1-1/2" Top Inlet Closet Fixture  
LESS STOP, WITH MODIFIED TAIL TO FIT SLOAN<sup>®</sup>/ZURN<sup>®</sup> STOP**

- Polished chrome plated vandal resistant metal cover with top mounted sensor operated **H<sub>2</sub>OPTICS<sup>®</sup>** electronics
- Right or left-hand supply installation
- ADA compliant, automatic operation battery powered infrared sensor
- Scratch resistant replaceable lens window
- Four (4) size AA alkaline batteries factory installed with valve in sleep mode for easy installation
- Hinged battery housing for easy maintenance
- Low battery flashing light (5000 flushes remaining), with battery strength indicator
- Supplied with an advanced infrared sensor activated flush system that uses precise user distance measurements along with a bowl length setting to activate the correct flush for each usage
- Optional 24 hour automatic flush factory set to OFF
- Set-up sensor range adjustment indicator lights
- 6 VDC input, 6 second arming delay
- Electronic operated non-hold-open **metal** manual override button with 5 second lockout
- Quiet action, TECK<sup>®</sup> exposed diaphragm flush valve
- Chloramine resistant diaphragm
- Forged brass diaphragm retainer
- Renewable seat
- Polished chrome plated finish
- **External water conserving flush adjustment**, factory set to 6 litre (1.6 gal.) (except -48 and -6 models)
- Adjustable 114mm to 131mm (4.5" to 5.18") inlet/valve outlet centers
- Vacuum breaker
- Spud flange, concealed spud nut, and 292mm (11-1/2") outlet tube

### ■ 81T201BTA-30-6

Same as 81T201BTA-30,  
but **Not Field Adjustable**

### ■ 81T201BTA-30-13

Same as 81T201BTA-30, but factory set to 13 litre (3.4 gal.)

### ■ 81T201BTA-30-48

Same as 81T201BTA-30, but factory set to 4.8 litre (1.27 gal.),  
**Not Field Adjustable**

### Approvals:

- IAPMO listed to CSA B125.3/ASSE 1037
- ADA Compliant and meets Handicapped Accessibility Standard ICC/ANSI A117.1 of less than 5 lbs. operating force.

(Contact Delta Representative for State and/or Local Approvals.)

U.S. Patent # 6, 826, 455

Other Patents Pending

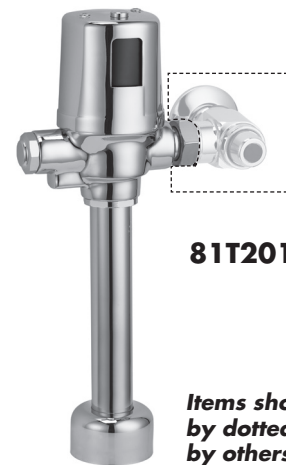


### Engineer/Architect Approval

Model Specified:

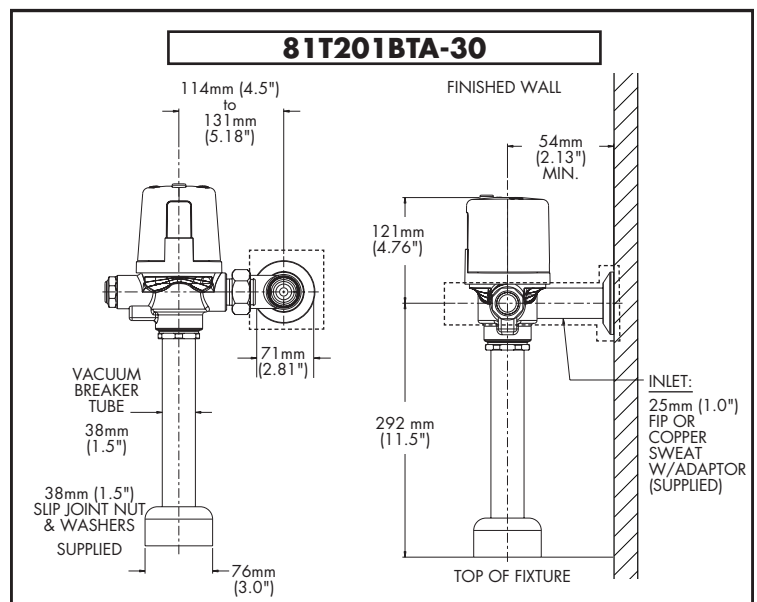
Approval:

Date:



**81T201BTA-30**

*Items shown outlined  
by dotted lines supplied  
by others.*



Note: For high and low pressure applications, please see page FEA-81T High Water Pressure note for more details.

Verify flow requirements with bowl manufacturer.

Note: Measurements may vary  $\pm 6$ mm (0.25")

Refer to [www.specselect.com](http://www.specselect.com) for individual models.

Note: Use this page as a product submittal sheet.