



TECK[®]
COMMERCIAL

Electronic Exposed TECK[®] Flush Valves for Sloan[®] / Zurn[®] Stops

❑ 81T231BTA-30

**Exposed Battery Operated
3/4" Top Inlet Urinal Fixture
LESS STOP, WITH MODIFIED TAIL TO FIT SLOAN[®]/ZURN[®] STOP**

- Polished chrome plated vandal resistant metal cover with top mounted sensor operated **H₂OPTICS[®]** electronics
- Right or left-hand supply installation
- ADA compliant, automatic operation battery powered infrared sensor
- Scratch resistant replaceable lens window
- Four (4) size AA alkaline batteries factory installed with valve in sleep mode for easy installation
- Hinged battery housing for easy maintenance
- Low battery flashing light (5000 flushes remaining) with battery strength indicator
- Infrared sensor range adjustment of 203mm-610mm (8"- 24"), factory set at 16" (±2")
- Optional 24 hour automatic flush factory set to OFF
- Set-up sensor range adjustment indicator lights
- 6 VDC input, 6 second arming delay
- Electronic operated non-hold-open **metal** manual override button with 5 second lockout
- Quiet action, TECK[®] exposed diaphragm flush valve
- Chloramine resistant diaphragm
- Forged brass diaphragm retainer
- Renewable seat
- Polished chrome plated finish
- **External water conserving flush adjustment**, factory set to 1.9 litre (.50 gal.)
- Adjustable 114mm to 131mm (4.5" to 5.18") inlet/valve outlet centers
- Vacuum breaker
- Spud flange, spud nut, and 330mm (13") outlet tube

❑ 81T231BTA-30-38

Same as 81T231BTA-30, but set to 3.8 litre (1.0 gal.),
Not Field Adjustable

❑ 81T231BTA-30-19

Same as 81T231BTA-30, **Not Field Adjustable**

❑ 81T231BTA-30-05

Same as 81T231BTA-30, but set to 0.5 litre (0.125 gal.),
Not Field Adjustable

Approvals:

- IAPMO listed to CSA B125.3/ASSE 1037
 - ADA Compliant and meets Handicapped Accessibility Standard ICC/ANSI A117.1 of less than 5 lbs. operating force.
- (Contact Delta Representative for State and/or Local Approvals.)
U.S. Patent # 6, 826, 455
Other Patents Pending

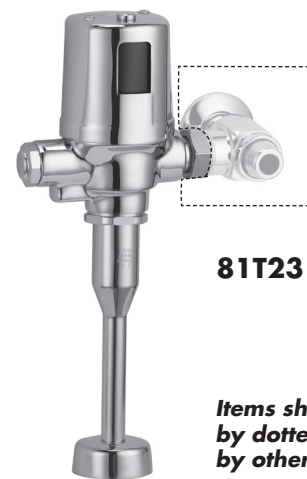


Engineer/Architect Approval

Model Specified:

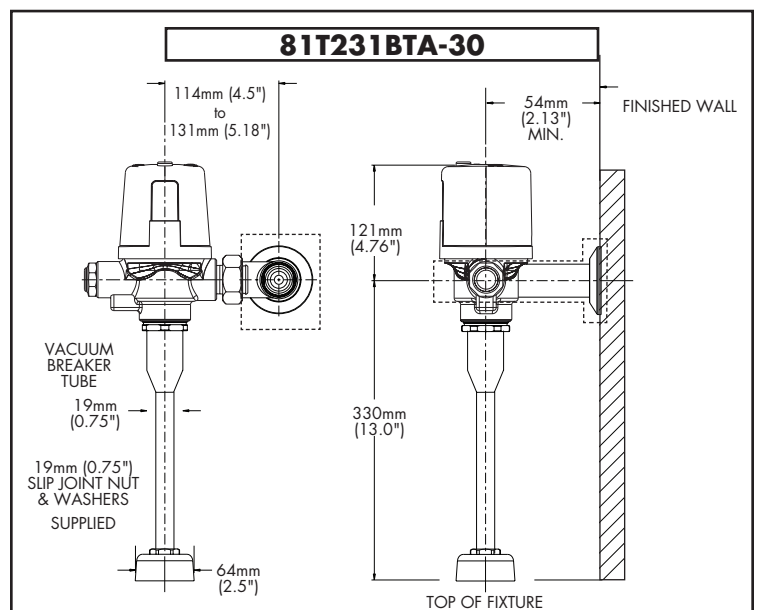
Approval:

Date:



81T231BTA-30

*Items shown outlined
by dotted lines supplied
by others.*



Note: For high and low pressure applications, please see page FEA-81T High Water Pressure note for more details.

Verify flow requirements with bowl manufacturer.

Note: Measurements may vary ± 6mm (0.25")

Refer to www.specselect.com for individual models.

Note: Use this page as a product submittal sheet.