

For Residential and Commercial Applications

Job Name		Engineer / Architect	
Job Location		Wholesaler	
Submittal Date		Contractor	

WB034/134/234 7/8" OD Copper Water Heater Connectors

Use: For use in exposed locations only to connect water heaters and other water connected devices to the water supply

Design Features:

- **Superior galvanic corrosion resistance.** Patented internal dielectric sleeve effectively isolates dissimilar metals within the waterway to prevent galvanic corrosion
- **No dielectric union needed** with installation. Dielectric is built-in to the design of the connector
- **Less torque to seal** against the pliable Nitrile rubber washer, especially on rough nipple surfaces
- **Longer connector nuts** allow a greater number of thread-to-thread contacts and a better seal
- **100% compliant** to California, Vermont and Maryland "low-lead" requirements

Operating Specifications:

Temperature: 40° to 180° F (NSF61 maximum 82° C)
Pressure: water pressures up to 125 psi maximum

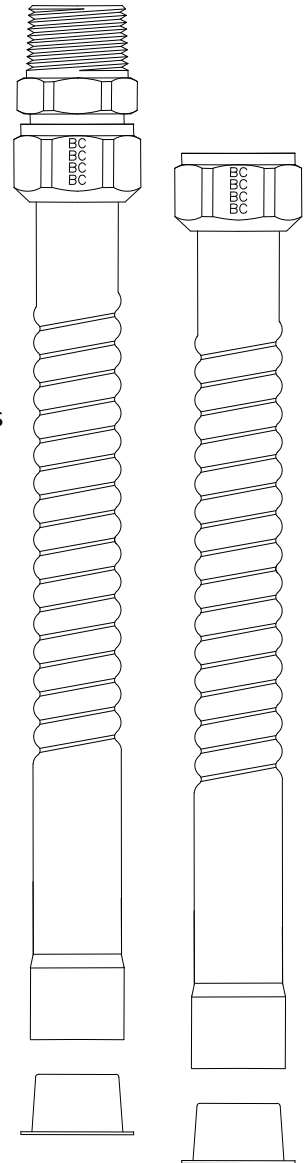


MATERIAL SPECIFICATIONS

Tubing	C12200 copper
Dielectric Sleeve	Polypropylene
Nuts	C36000 brass
End Fittings	C36000 brass
Washers	Nitrile rubber

Part Listing:

- ☐ WB034-12N 7/8" OD X 12" connector with 3/4" FIP fitting x 3/4" Nom. Male/Female Sweat (7/8" ID)
- ☐ WB034-15N 7/8" OD X 15" connector with 3/4" FIP fitting x 3/4" Nom. Male/Female Sweat (7/8" ID)
- ☐ WB034-18N 7/8" OD X 18" connector with 3/4" FIP fitting x 3/4" Nom. Male/Female Sweat (7/8" ID)
- ☐ WB034-24N 7/8" OD X 24" connector with 3/4" FIP fitting x 3/4" Nom. Male/Female Sweat (7/8" ID)
- ☐ WB134-18N 7/8" OD X 18" connector with 1" FIP fitting x 3/4" Nom. Male/Female Sweat (7/8" ID)
- ☐ WB134-24N 7/8" OD X 24" connector with 1" FIP fitting x 3/4" Nom. Male/Female Sweat (7/8" ID)



This specification and all information contained herein is the confidential and exclusive property of BrassCraft Manufacturing, and shall not be disclosed to others without the written consent of BrassCraft. This specification must be returned to BrassCraft if requested.

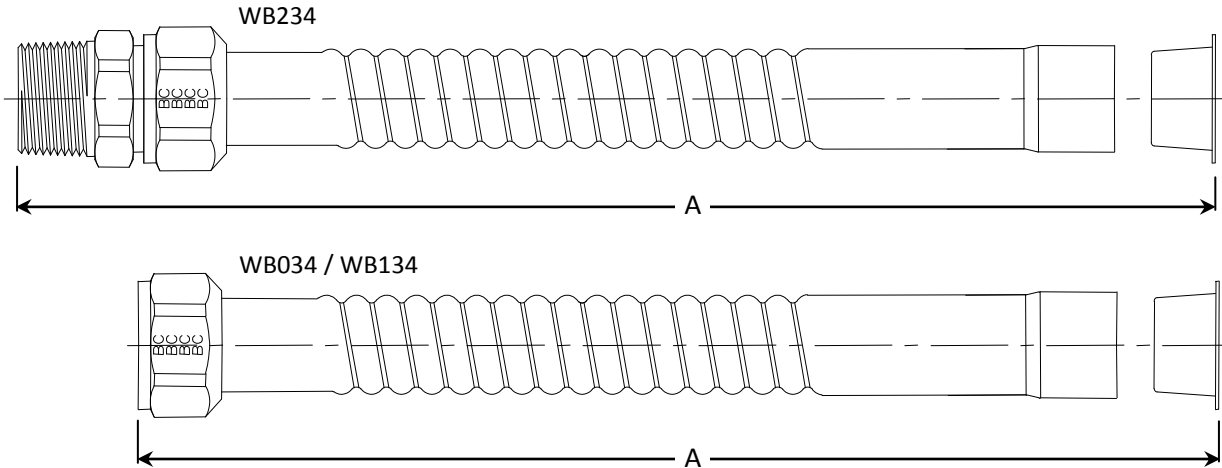
300.22 W034/134/234 Copper Water Heater Connectors REV 12/10

BrassCraft
 © 2010 Brass-Craft Mfg.

WB034/134/234 7/8" OD Copper Water Heater Connectors

Part Listing:

- ☐ WB234-12N 7/8" OD X 12" connector with 3/4" MIP/FIP fitting x 3/4" Nom. Male/Female Sweat (7/8" ID)
- ☐ WB234-15N 7/8" OD X 15" connector with 3/4" MIP/FIP fitting x 3/4" Nom. Male/Female Sweat (7/8" ID)
- ☐ WB234-18N 7/8" OD X 18" connector with 3/4" MIP/FIP fitting x 3/4" Nom. Male/Female Sweat (7/8" ID)
- ☐ WB234-24N 7/8" OD X 24" connector with 3/4" MIP/FIP fitting x 3/4" Nom. Male/Female Sweat (7/8" ID)



PART DIMENSIONS (Inches)					
Connector Length ($\pm.31$)					
Model	Dim.	12"	15"	18"	24"
WB034	A	12.31	15.31	18.31	24.31
WB134	A	-----	-----	18.31	24.31
WB234	A	13.05	16.05	19.05	25.05

Listings & Certifications:

- IAPMO listed to ASME A112.18.6 and CSA B125 (File # 0452)
- CSA listed to CSA B125 (File # 204593)
- CSA approved to California Health & Safety Code 116875, Vermont Bill S.152 and Maryland House Bill 372 (Project # 2174785)



This specification and all information contained herein is the confidential and exclusive property of BrassCraft Manufacturing, and shall not be disclosed to others without the written consent of BrassCraft. This specification must be returned to BrassCraft if requested.