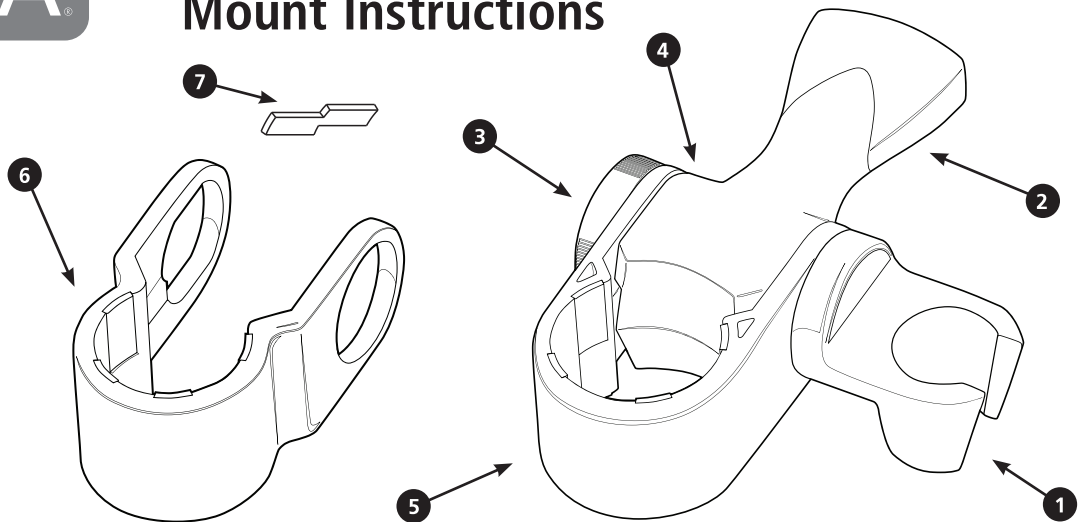




Hand Shower Mount Instructions

Parts List:

1. Hand Shower Holder
2. Paddle
3. Threaded Cap
4. Paddle Assembly
5. Grab Bar Collar
1½" or 1¼" diameter
6. Grab Bar Collar,
alternate diameter,
if required
7. Rubber Strip
(optional)



1 Unscrew Threaded Cap assembly. 	2 Slide Hand Shower Holder out of assembly. 	3 Slide the Grab Bar Collar out of assembly. 	4 Identify the size of your Grab Bar. Your Hand Shower Mount has been shipped with Grab Bar Collars to accommodate either a 1½" or 1¼" diameter Grab Bar. Once you have determined the correct size, slip the correct Collar around your bar.
5 With the Collar around your bar, insert the Hand Shower Holder through the openings in the Grab Bar Collar and Paddle. Ensure the flat areas on the end of the Hand Shower Holder align with the flat sections in the opening of the Collar. 	6 Screw Threaded Cap onto end of Hand Shower Holder. A coin may be used to assist in tightening Cap; however, be careful not to over tighten. 	7 To position your Hand Shower Mount on your Grab Bar: <ol style="list-style-type: none"> a. Push down or Push up on the Paddle to release the grip on your Grab Bar. b. Slide Hand Shower Mount to desired location. c. Return Paddle to center position to lock. d. Rotate Hand Shower Holder to desired orientation. 	If you require the mount to be tighter on your wallbar, add the rubber strip to the mount in these locations.

LIFETIME FAUCET AND FINISH LIMITED WARRANTY

All parts and finishes of the Delta® faucet are warranted to the original consumer purchaser to be free from defects in material & workmanship for as long as the original consumer purchaser owns their home. Delta Faucet Company recommends using a professional plumber for all installation and repair. Delta will replace, FREE OF CHARGE, during the warranty period, any part or finish that proves defective in material and/or workmanship under normal installation, use and service. Replacement parts may be obtained by calling 1-800-345-DELTA (in the U.S. and Canada) or by writing to:

In the United States:
Delta Faucet Company
Product Service
55 E. 111th Street
Indianapolis, IN 46280

In Canada:
Masco Canada
Technical Service Centre
350 South Edgeware Rd.,
St. Thomas, ON N5P 4L1

This warranty is extensive in that it covers replacement of all defective parts and even finish, but these are the only two things that are covered. LABOR CHARGES AND/OR DAMAGE

INCURRED IN INSTALLATION, REPAIR OR REPLACEMENT AS WELL AS ANY OTHER KIND OF LOSS OR DAMAGES ARE EXCLUDED. Proof of purchase (original sales receipt) from the original consumer purchaser must be made available to Delta for all warranty claims. THIS IS THE EXCLUSIVE WARRANTY BY DELTA FAUCET COMPANY, WHICH DOES NOT MAKE ANY OTHER WARRANTY OF ANY KIND, INCLUDING THE IMPLIED WARRANTY OF MERCHANTABILITY. This warranty excludes all industrial, commercial and business usage, whose purchasers are hereby extended a five year limited warranty from the date of purchase, with all other terms of this warranty applying except the duration of the warranty. This warranty is applicable to Delta® faucets manufactured after January 1, 1995. Some states/provinces do not allow the exclusion or limitation of incidental or consequential damages, so the above limitation or exclusion may not apply to you. Any damage to this faucet as a result of misuse, abuse or neglect, or any use of other than genuine Delta® replacement parts WILL VOID THE WARRANTY. This warranty gives you specific legal rights, and you may also have other rights which vary from state/province to state/province. It applies only for Delta® faucets installed in the United States of America, Canada and Mexico.