



## Metering Urinal Valves

Lever handle Back inlet supply metering urinal valve w/union inlet stop- brass oscillating lever handle -inlet cover tube -set screw wall flange

**Model No: 86T505**

### COMPLIES WITH:

- CSA certified.
- Lever Handle ADA compliant and meets Handicapped Accessibility Standard ASME A117.1 of less than 5 lbs operating force
- (Contact Delta Representative for State and/or Local Approvals)



### SPECIFICATION:

- Heavy Duty Cast Brass valve for 3/4" IP spud urinal
- Polished chrome plated finish
- Delta® metering slow close cartridge
- 1/2" universal FIP/copper sweat inlet
- For Washdown Urinals
- Slow close cartridge factory set for 9-16 second cycle at 50 psi
- Chrome plated union inlet stop
- Back inlet supply
- Brass oscillating lever handle, coupling nuts, inlet cover tube
- Set screw wall flange
- Spud flange and spud nut
- Outlet tube

### OPERATION:

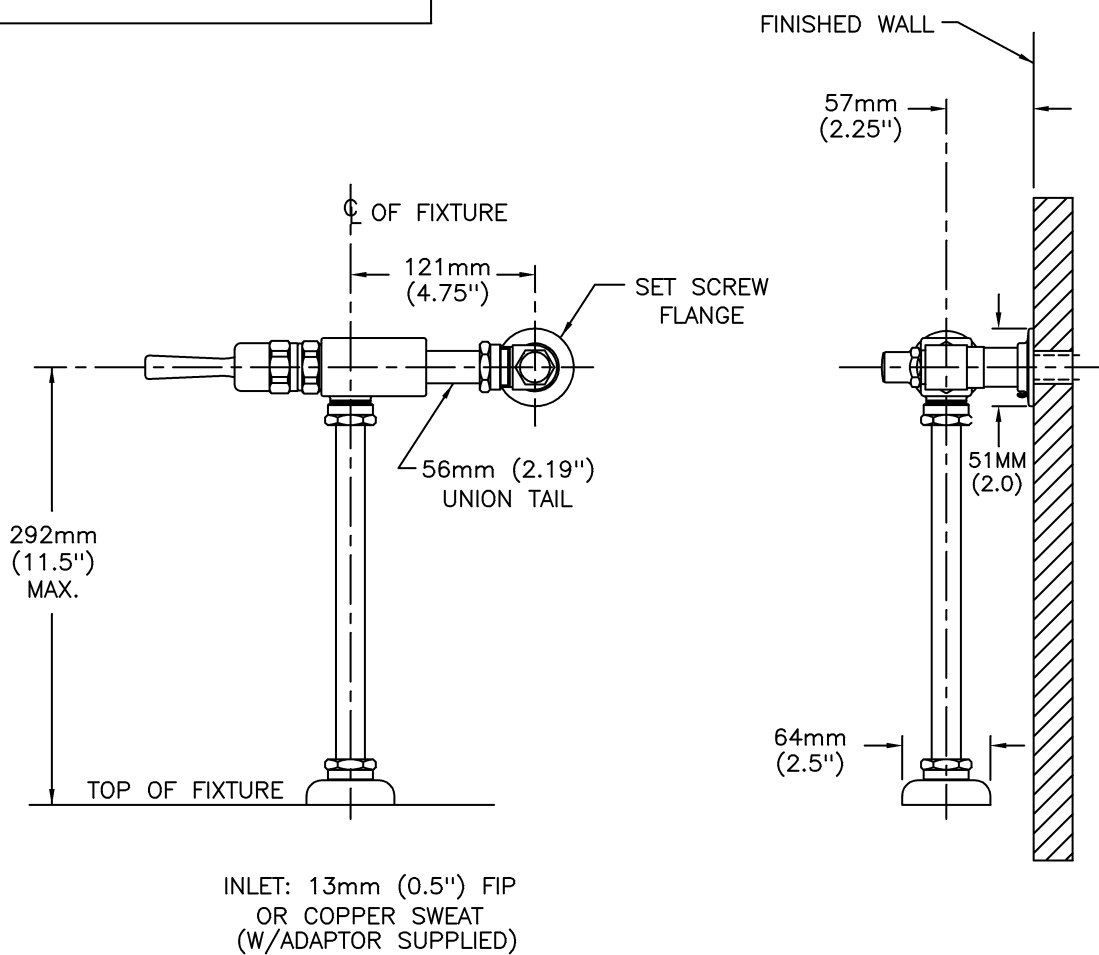
- Not Available

***(Dimensional drawing on following page)***

Delta reserves the right (1) to make changes to specifications and materials, and (2) to change or discontinue models, both without notice or obligation. Dimensions are for reference. Measurement may vary plus or minus 6mm(0.25"). Mounting locations are suggested only. Check with local codes for requirements in your area. This spec was produced January 31, 2013.

Delta Faucet Company - 55 East 111th St. - Indianapolis, Indiana, USA 46280 - (317) 848-1812  
Delta Faucet Canada - 395 Matheson Blvd E - Mississauga, Ontario, Canada L4Z 2H2 - (905) 712-3030

— FACTORY SET FOR 9 TO 16 SECOND CYCLE AT 50 PSI



Delta reserves the right (1) to make changes to specifications and materials, and (2) to change or discontinue models, both without notice or obligation. Dimensions are for reference. Measurement may vary plus or minus 6mm(0.25"). Mounting locations are suggested only. Check with local codes for requirements in your area. This spec was produced January 31, 2013.