

# OASIS® VERSACOOLER® II MODELS PAC, PGAC, PFAC, P8AC, PG8AC, PF8AC, P8ACEE, PF8ACEE, PV8AC SUNROC MODELS ADAAC, ADAFAC, ADA8AC, ADAF8AC, ADA8ACHF, ADAF8ACHF

## A. INSPECTION

Inspect the carton and water cooler for evidence of rough handling and concealed damage. Damage claims should be filed with the carrier.

## B. TO PUT WATER COOLER INTO SERVICE

- Note:** The following states require a licensed plumber to install cooler; AR, GA, MA, MI, OK, RI, SC, SD, TX, VT and WI. CA, KS, MN, NM and OR allow for a state-registered installer or contractor as well. State and local plumbing codes may prohibit the use of saddle tapping valves for water line connection in some applications. All connections must conform to applicable plumbing codes.
- Locate and install plumbing and electrical service, if required, in accordance with the Roughing-in Drawing. Filter units have additional instructions on a label inside the access panel. Read these before installing unit.
- FLUSH BUILDING WATER SUPPLY LINE BEFORE INSTALLING UNIT.
- Install unit on the wall hanger. **Wall hanger is shipped fastened to the back of the unit.**
- Install a trap in the waste line and a shut off valve in the water supply line.** An in-line strainer is furnished in the "Water Supply" tube. Connect the "Water Supply" tube to the shut off valve. This connection should not be a solder joint or flare connection to allow access to the strainer for service. To ease removal of the strainer, a sheet metal screw may be lightly threaded into the open end. When the unit has an internal waste trap, the trap should be wrapped with insulating tape to prevent sweating. Use of the 1-3/4 diameter knockout for a waste line is not recommended because of a potential conflict with ADA\* toe space clearance requirements. Check your local building code inspector for approval.
- Rotate the fan blade by hand to see that it is free of obstructions.
- Check the available power supply against the water cooler data plate to assure correct electrical service. Plug power supply cord into wall outlet. The rear most 1-3/8 diameter knockout in the frame bottom is for an externally located electrical supply. Make sure the knockout hole edge is smooth and free of any burrs. Use of a Heyco bushing #2184 in the knocked out hole is recommended in order to prevent damage to the service cord and to close up excess opening around the cord. Route the cord so it does not interfere with ADA\* space requirements.
- To fill the cold water tank on water cooler versions, open the water supply line shut-off and push any one of the front or side pushbuttons to allow water to flow to the bubbler. On the EE or HF model, actuate the solenoid by holding one hand approximately 3" from the infrared sensor. Run water until stream is free of bubbles.
- To Adjust Bubbler Stream:
  - All Pushbutton models are equipped with a Cartridge Regulator. The P8AC, PAC, PG8AC, PGAC, PF8AC, PFAC, ADAAC, ADAFAC, ADA8AC and ADAF8AC have a slot in the shelf below the Pushbuttons. Insert a screwdriver in this slot to adjust regulator. Turn adjustment clockwise to increase stream height. To access the PV8AC adjustment, remove the Bezel and Button from the front of the cooler.
  - Electric Eye (EE or HF) models have a Regulator built into the Bubbler. If adjustment is needed, insert a 5/64 hex wrench approximately 1-1/8" into the bubbler nozzle opening until it bottoms out and is seated in an adjust screw. Turn the adjust screw clockwise to reduce the stream height or counterclockwise to increase the height. Note, less than one turn is required to go from a closed to a wide open flow. Do not over tighten the adjuster in the closed position as stripping the hex impression in the adjust screw may result. Turn the adjuster 1/16 of a turn at a time.
- On electric eye equipped models, place and then hold hand approximately 3" from the sensor to actuate the solenoid valve. After approximately 30 seconds run time, the sensor will automatically shut off the solenoid valve. To reactivate, move hand away for an instant and then again place it in front of the sensor.
- To adjust the beam range of the sensor (EE and HF models only):
  - Shut off the water and power supplies.
  - Remove the four screws from the top front.
  - Remove the eight screws from the bottom of the nose that holds the nose to the shelf.
  - Remove the nose to gain access to the sensor adjusting screw located between the two lenses.
  - The screw can be turned a maximum of 3/4 turns. Turn screw counterclockwise to decrease range. The sensor has an adjustable range of 24" to 48". It is factory set at 27". There is a non-adjustable on-time delay of 0.75 seconds to prevent nuisance actuation of the solenoid valve should someone walk by. After drinking, the water will shut off immediately after walking away. Maximum run time is 30 seconds should someone tamper with the sensor. NOTE: Walls with a reflective finish, i.e., ceramic tile, across from the sensor may cause false actuation no matter what the sensor adjustment is for distance. Therefore, do not install the unit in such an area or dull the surface of the wall so it will not reflect light.

## C. MAINTENANCE

The only maintenance operation required is the removal of dirt and lint from the condenser where used. Inspection should be made at 3-month intervals. Disconnect the power supply cord, then clean the condenser with a small stiff non-wire or vacuum cleaner attachment brush when required. Observance of this procedure will insure adequate air circulation through the condenser so operation is efficient and economical.

## D. OVERLOAD PROTECTION

The compressor motor, where used, is equipped with an automatic reset protector which will disconnect the motor from the line in case of an overload.

## E. LUBRICATION

This unit is equipped with a hermetically sealed compressor and requires no additional lubrication. The fan motor, where used, on this unit seldom needs oiling, but if required, a few drops of SAE 10 oil should be used.

## F. TO DISCONTINUE USE OF WATER COOLER

- Close water shut-off valve.
- Provide container to catch water to be drained.
- On the push button model, disconnect the water supply line at the shut off valve and remove the tank drain plug. Actuate and hold in the pushbutton to open the solenoid valve and completely drain the cooler. Disconnect the power supply cord.
- On the EE model, disconnect the water supply line at the shut off valve and remove the tank drain plug. Actuate the solenoid, as explained in Step B7 to completely drain the cooler. Disconnect the power supply cord.
- Replace plug when draining is complete.
- ALWAYS DRAIN ALL WATER WHEN FREEZING TEMPERATURES ARE ANTICIPATED AND BEFORE SHIPPING THE WATER COOLER.**

\*Americans With Disabilities Act

## WARNING

The warranty and the Underwriters' Laboratory Listing for this machine are automatically voided if this machine is altered, modified, or combined with any other machine or device. Alteration or modification of this machine may cause serious flooding and/or hazardous electrical shock or fire.

EXCEPT AS SET FORTH HEREIN, THE MANUFACTURER MAKES NO OTHER WARRANTY, GUARANTEE OR AGREEMENT EXPRESSED, IMPLIED OR STATUTORY, INCLUDING ANY IMPLIED WARRANTY OR MERCHANTABILITY OR FITNESS FOR A PARTICULAR PURPOSE.

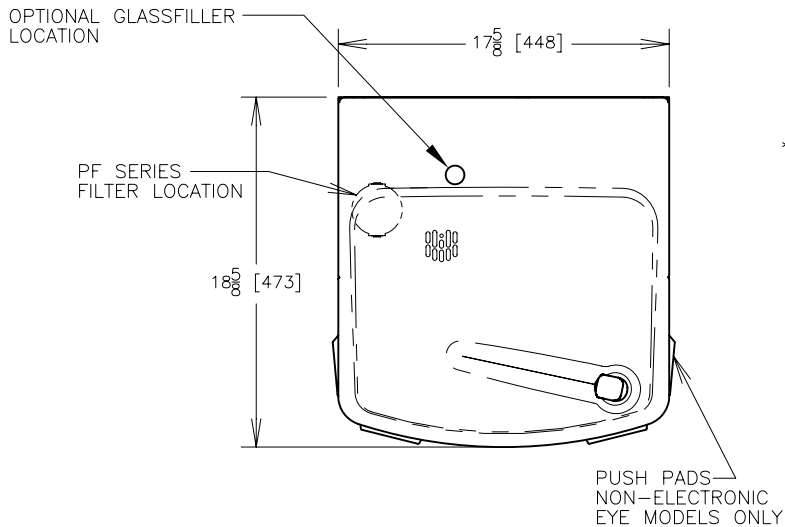


222 East Campus View Blvd. • Columbus, OH 43235 U.S.A.  
1-800-950-3226  
www.oasiscoolers.com

# OASIS® VERSACOOLER® II MODELS

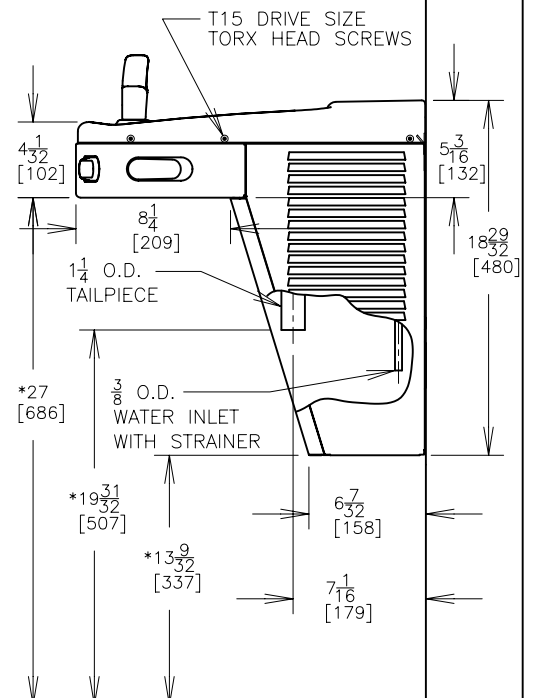
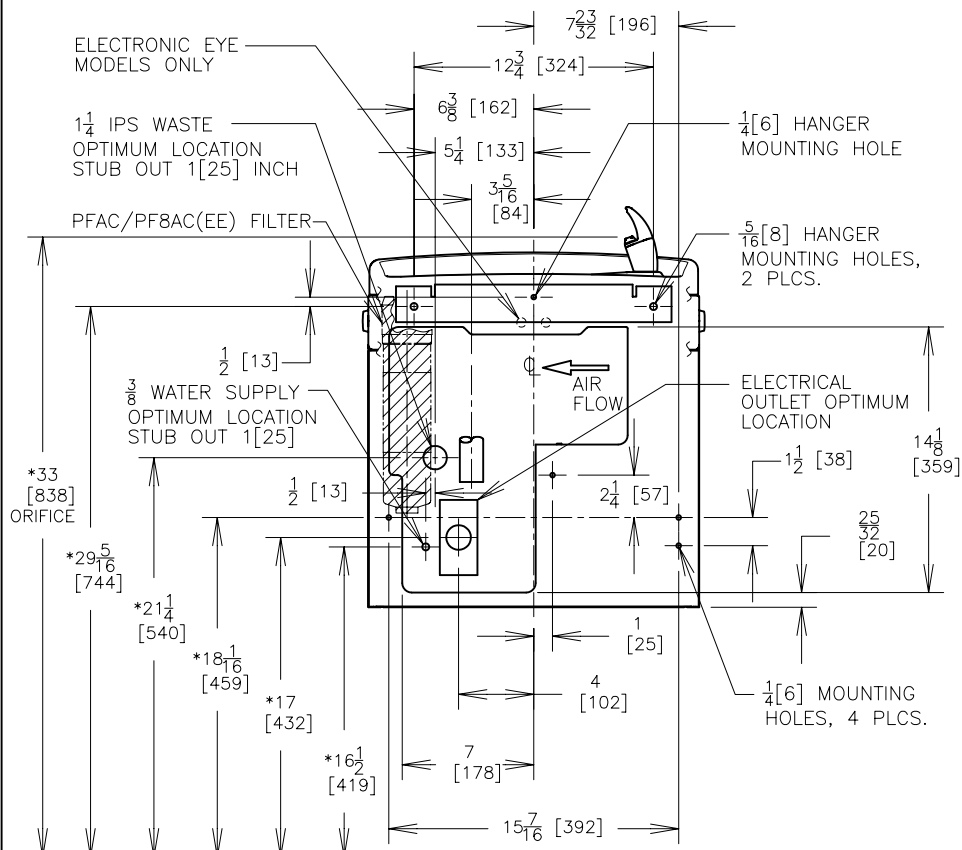
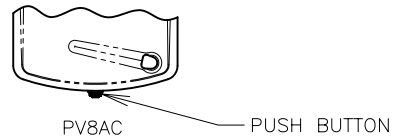
## PAC, PGAC, PFAC, P8AC, PG8AC, PF8AC, P8ACEE, PF8ACEE, PV8AC

## SUNROC MODELS ADAAC, ADAFAC, ADA8AC, ADAF8AC, ADA8ACHF, ADAF8ACHF

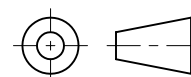


### NOTES:

1. TRAP, STOP VALVE AND ELECTRICAL OUTLET NOT FURNISHED.
2. ALLOW 4 INCHES [102 MM] MIN. PER SIDE FOR VENTILATION.
- \*3. RECOMMENDED ADULT BARRIER FREE HEIGHT INSTALLATION SHOWN. REDUCE HEIGHT BY 3 INCHES FOR INSTALLATIONS USED PRIMARILY BY CHILDREN AGES 12 AND YOUNGER. UNIT SHALL ALSO HAVE A MINIMUM CLEAR FLOOR SPACE 30[760] BY 48[1220]. ADJUST VERTICAL DIMENSIONS AS REQ'D TO COMPLY WITH FEDERAL, STATE, AND LOCAL CODES.
4. ALL DIMENSIONS ARE IN INCHES. DIMENSIONS IN BRACKETS [ ] ARE IN MILLIMETERS.



THIRD ANGLE PROJECTION



ROUGHING-IN AND  
DIMENSIONAL DRAWING



Water Coolers



## **VERSAFILLER®**

### **Model PWSBF (retro fit) and P\*SBF Family of Drinking Fountains/VersaFiller combo**

### **Installation Instructions**

The VersaFiller is an extension of the Aqua Pointe® product line that mounts directly above Versacooler® I and II products. *No additional electrical connections are required.*

If installed onto a refrigerated cooler, then chilled water can be dispensed through the VersaFiller. Otherwise, room temperature water will be dispensed.

The VersaFiller is shipped partially assembled.

On the combo units, the cooler is plumbed and ready to attach to the VersaFiller.

**When completed, the finished assembly will look like this:**

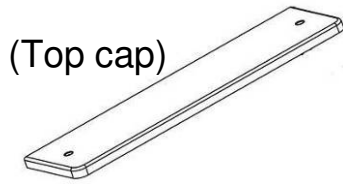


OR

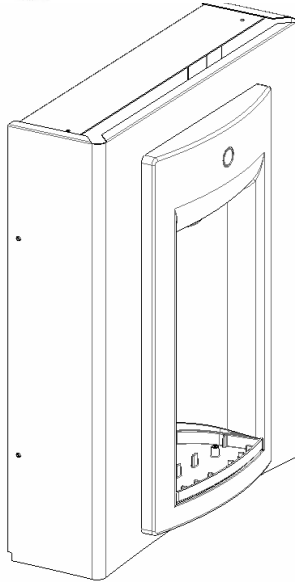


## Section 1: Getting Started

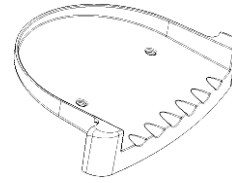
### What's Included:



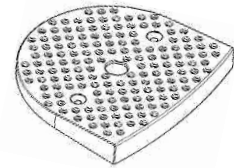
(Top cap)



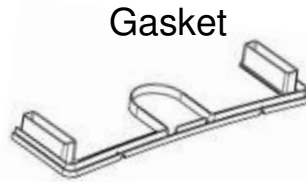
VersaFiller Sports  
Bottle Filler- (with  
wrapper, alcove  
and top cap  
installed onto the  
frame)



Drip tray



Anti splash grate

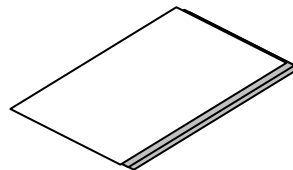
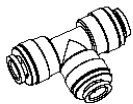


Gasket



38" of 1/4 OD  
plastic tubing  
with 19" of  
sponge tubing  
insulation

Quick connect  
tee fitting



Installation  
instructions



Anti Splash  
grate screws (2)



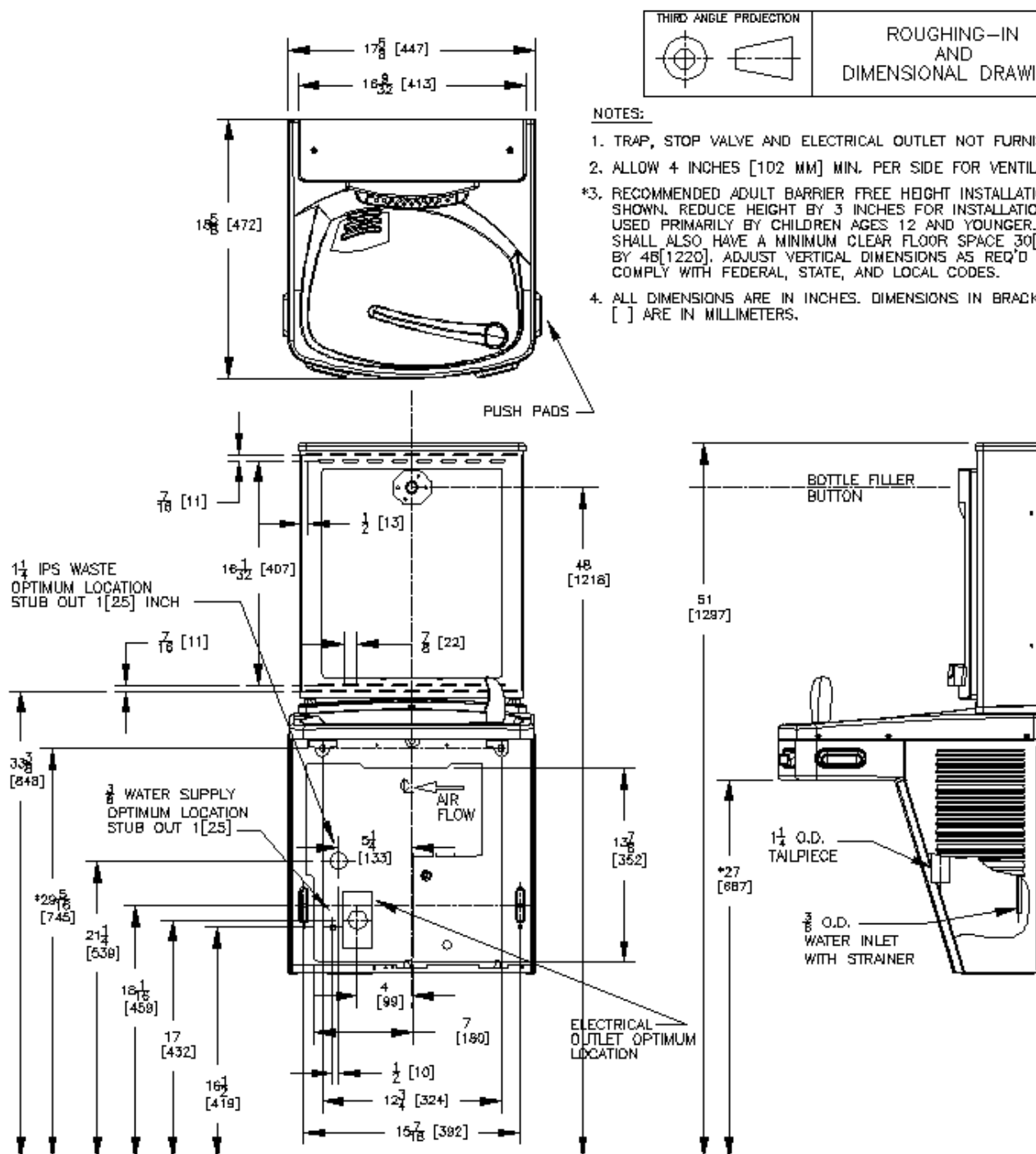
Snap bushing

### Tools required:

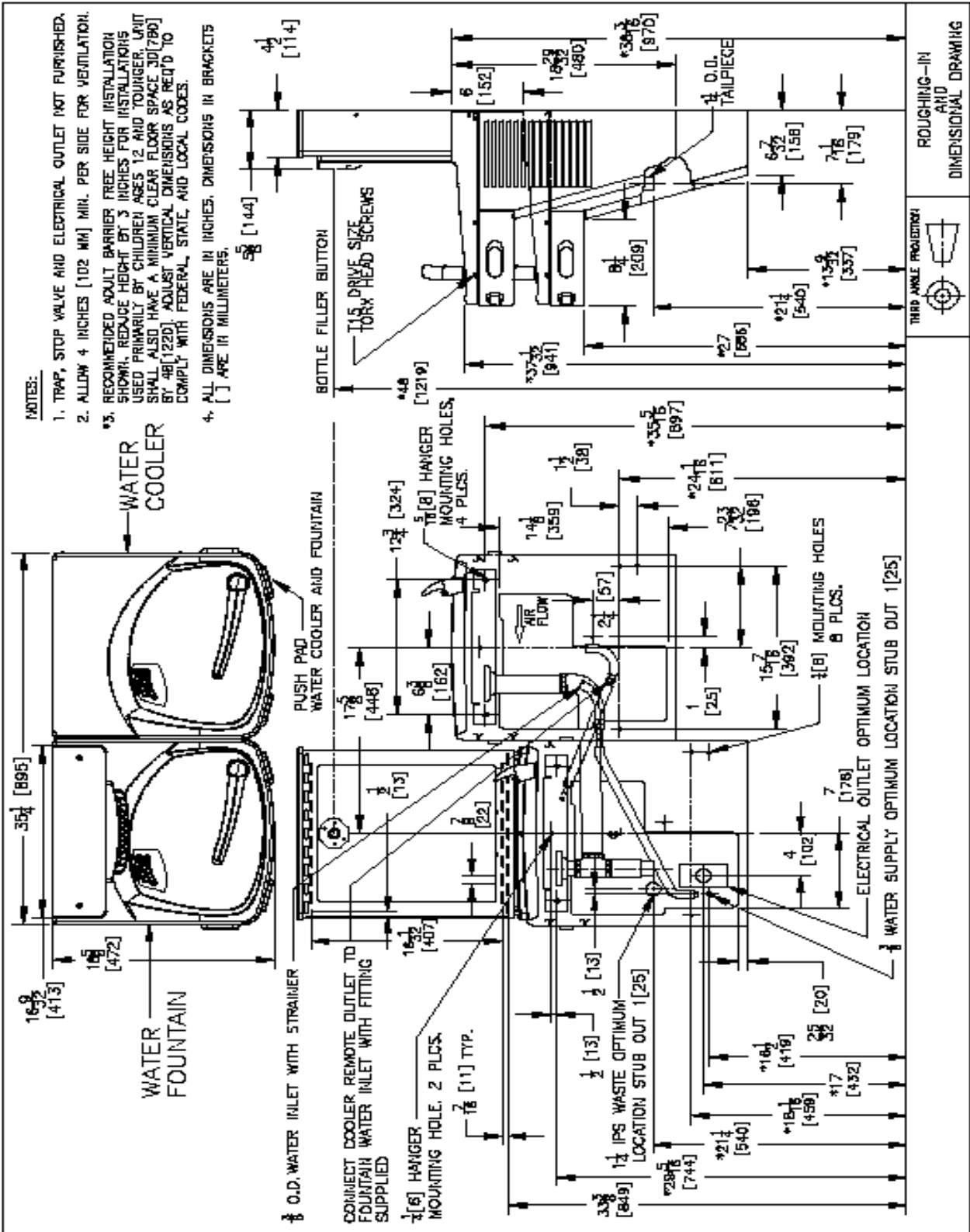
- 3/8 drill bit that will drill through SS top
- Electric drill
- Small tubing cutter for copper tube
- 1/4 " nut driver
- # 2 Phillips screw driver
- #15 torx bit driver

## Section 2: Rough In Drawing

## Oasis PWSBF: Versacooler® II Models PAC, P8AC with VersaFiller



## Oasis PWSBF: Versacooler® II Split Level Models with VersaFiller



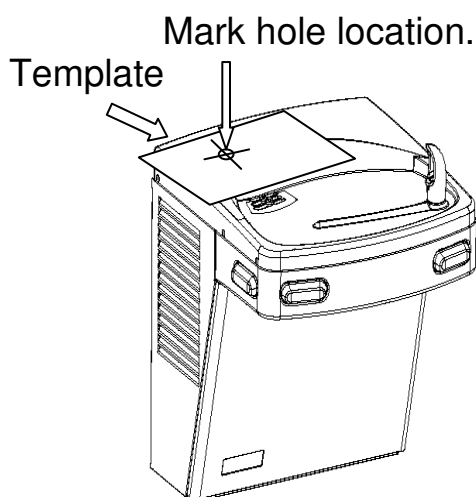
\* On split level models, the VersaFiller must be mounted on the low unit in order to meet ADA guidelines.

## Section 3: Installation

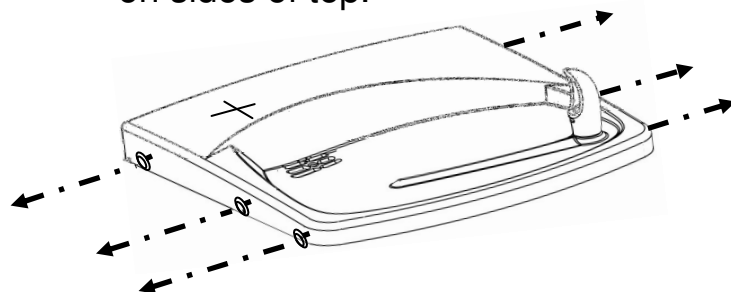
**Note: Proceed to Sect 3B Step 5 if the cooler is purchased “VersaFiller ready”.**

### **A: Drilling hole in the top for water line connection.**

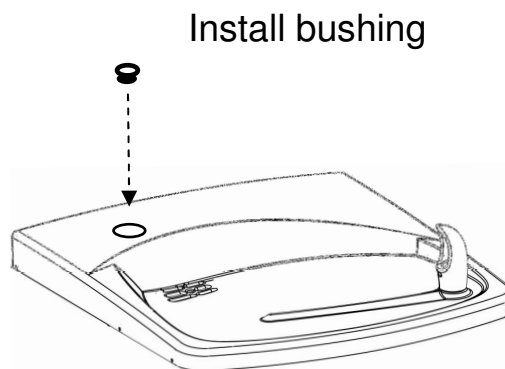
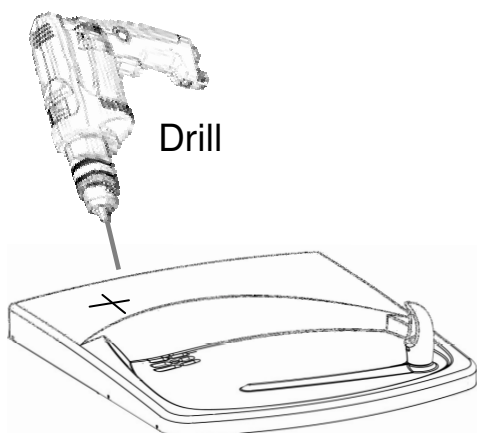
1. Disconnect power by UNPLUGGING unit. It might be necessary to remove the front panel to get access to the power.
2. Turn OFF water supply to the unit. It might be necessary to remove the front panel to access the water stop valve.
3. Place hole template onto cooler top so it is aligned with the left side of unit and wall. SEE NEXT PAGE FOR TEMPLATE
4. Mark hole location
5. Remove top from unit.



Remove top from cooler by removing six #15 torx head screws on sides of top.



6. Using a 3/8 drill bit, drill a hole through top.
7. Install snap bushing into hole to protect tubing from being cut.



ALIGN THIS EDGE WITH LEFT EDGE OF COOLER TOP

3-1/4"  
from  
side

PLACE THIS EDGE AGAINST WALL

2-1/8"  
from  
back

Mark this center point on the top. Remove the top from the cooler. Then drill a 3/8 hole through the top at the marked center point.

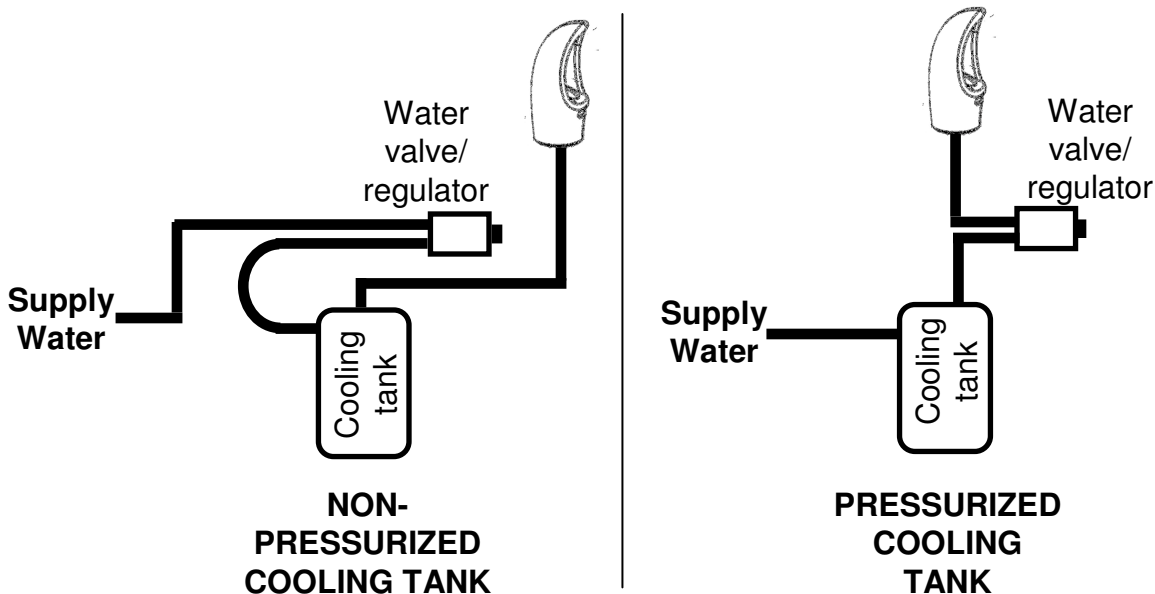
USE THIS TEMPLATE TO MARK THE  
HOLE LOCATION ON COOLER TOP



## Section 3: Installation

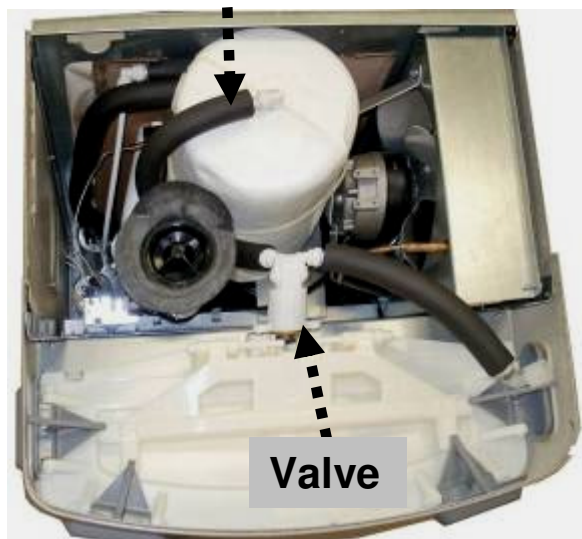
### B: Connecting the water line

If the cooling tank is non-pressurized, then go to the “Pressurizing the cooling tank” addendum section. Otherwise, proceed to step 1 below. Non-pressurized units are single units made since December of 2009. Refer to the schematic below to identify the system that you have.



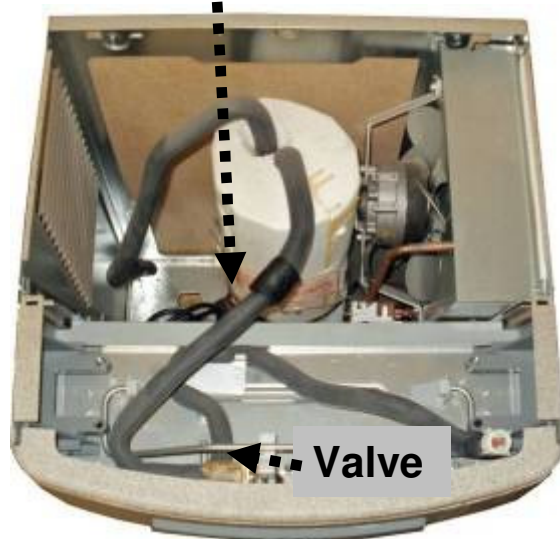
1. With the cooler top removed, find the tube going from the cooling tank outlet to the valve. The TEE fitting (supplied) will need to connect between the cooling tank and valve.

Outlet Tube (insulated plastic)



P8AC family

Outlet Tube (insulated copper)



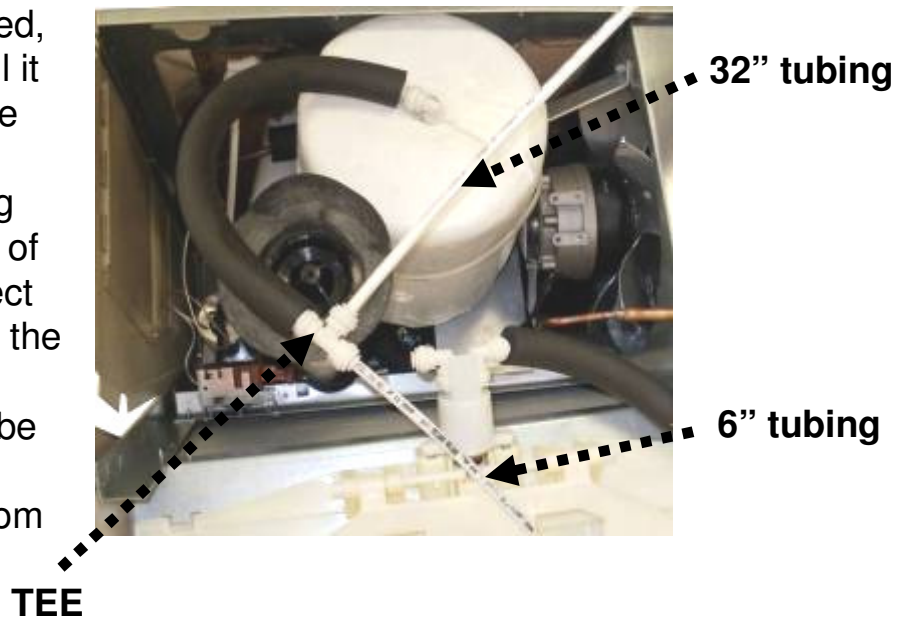
P8AM family

## Section 3: Installation: **For the P8AC Version: Versacooler II**

2. Disconnect tubing from the elbow on the valve.



3. Using the 38" piece of tubing provided, cut 6" and install it on the end of the TEE. Install the remaining tubing onto the branch of the TEE. Connect the other end of the TEE to the tank outlet tubing (tube that was disconnected from the elbow).



4. Route the TEE and tubing under the waste drain and connect the 6" length to the water valve elbow.



Go to Step 5 "Final steps for both product families:"

## Section 3: Installation: **For the P8AM Version: Versacooler I**

2. Remove tar tape from the insulation on the outlet tube.



3. Pull back insulation and cut the copper tube with a tubing cutter. Cut where there is at least 1 inch of *straight* tubing on each side of the cut.



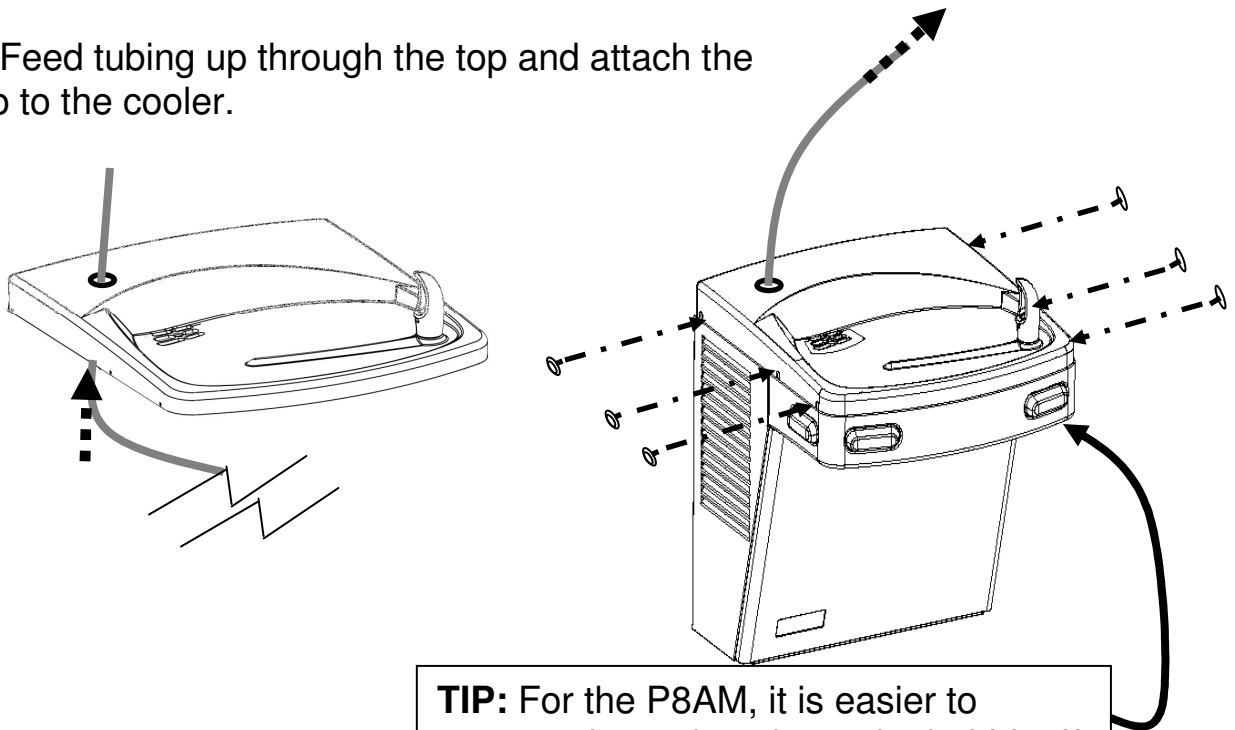
4. Install TEE fitting by connecting the copper tubing to each end. Then install the 32" piece of plastic tubing to the TEE branch.



32" plastic tubing (supplied)

## Section 3: Installation: **Final steps for both product families:**

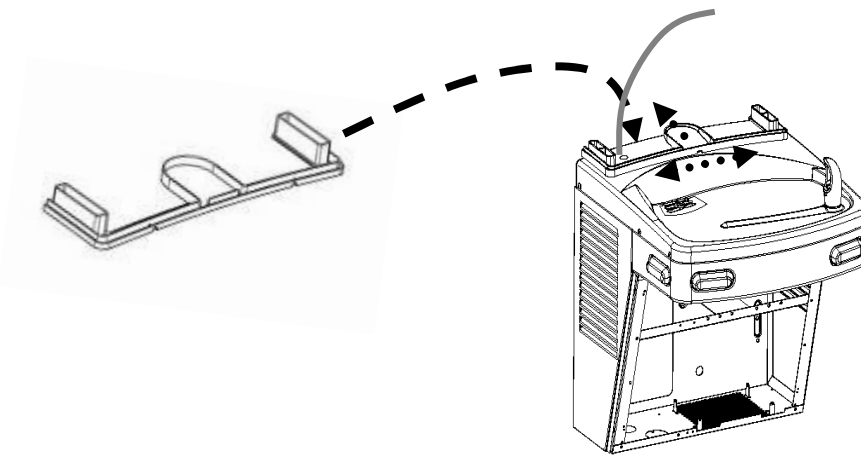
5. Feed tubing up through the top and attach the top to the cooler.



**TIP:** For the P8AM, it is easier to connect the outlet tube to the bubbler if the front nose is removed.

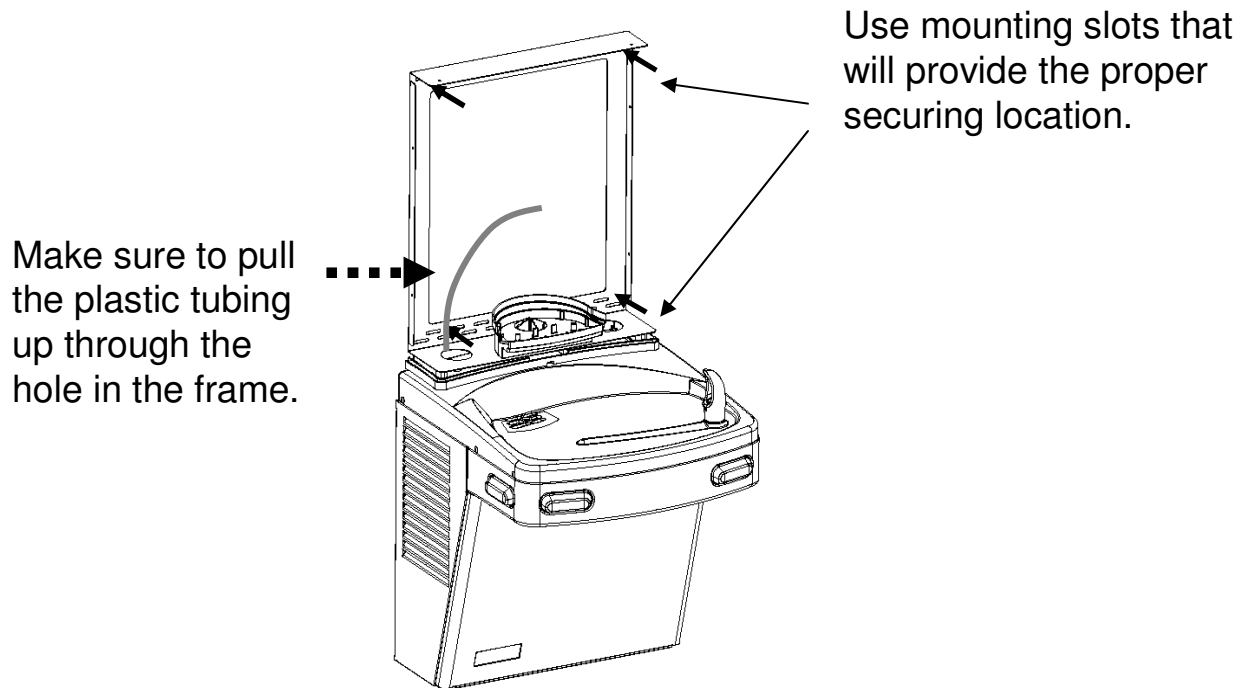
### **C: Mounting the frame to the wall**

1. Place rubber gasket on top of the cooler so it is centered left/right and against the wall.



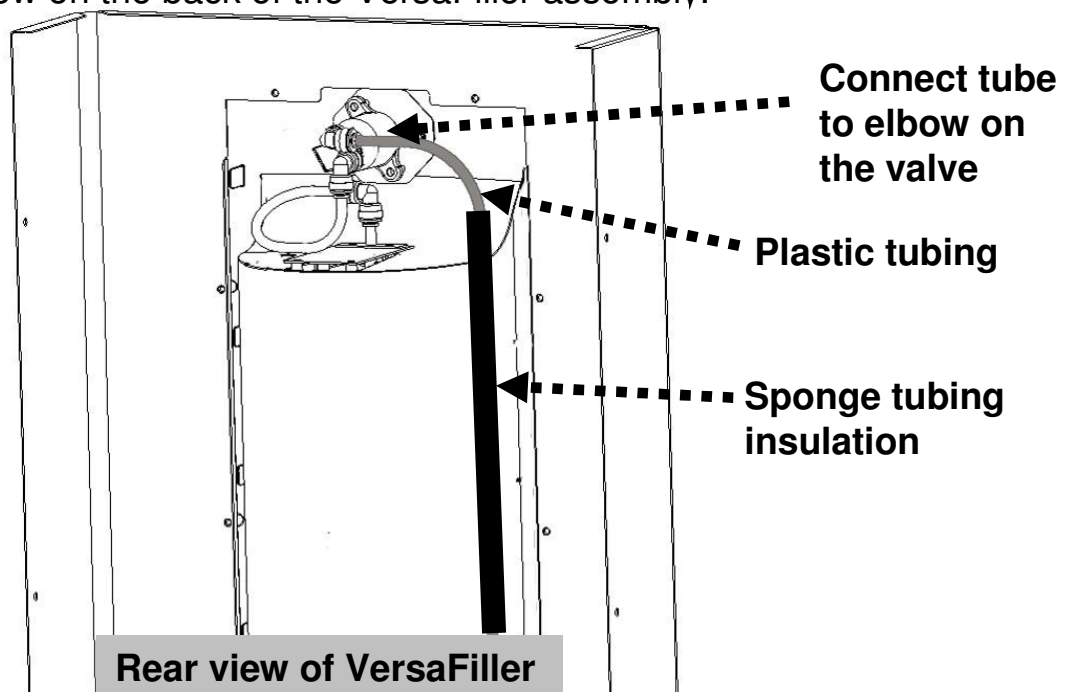
## Section 3: Installation

2. Set the wall frame onto the gasket. Center it left/right and push it against the wall and mark hole locations for wall fasteners. The gasket will set the frame at the proper height.



3. Secure frame to the wall with fasteners (not provided). Pull plastic tubing up through the hole in the frame.

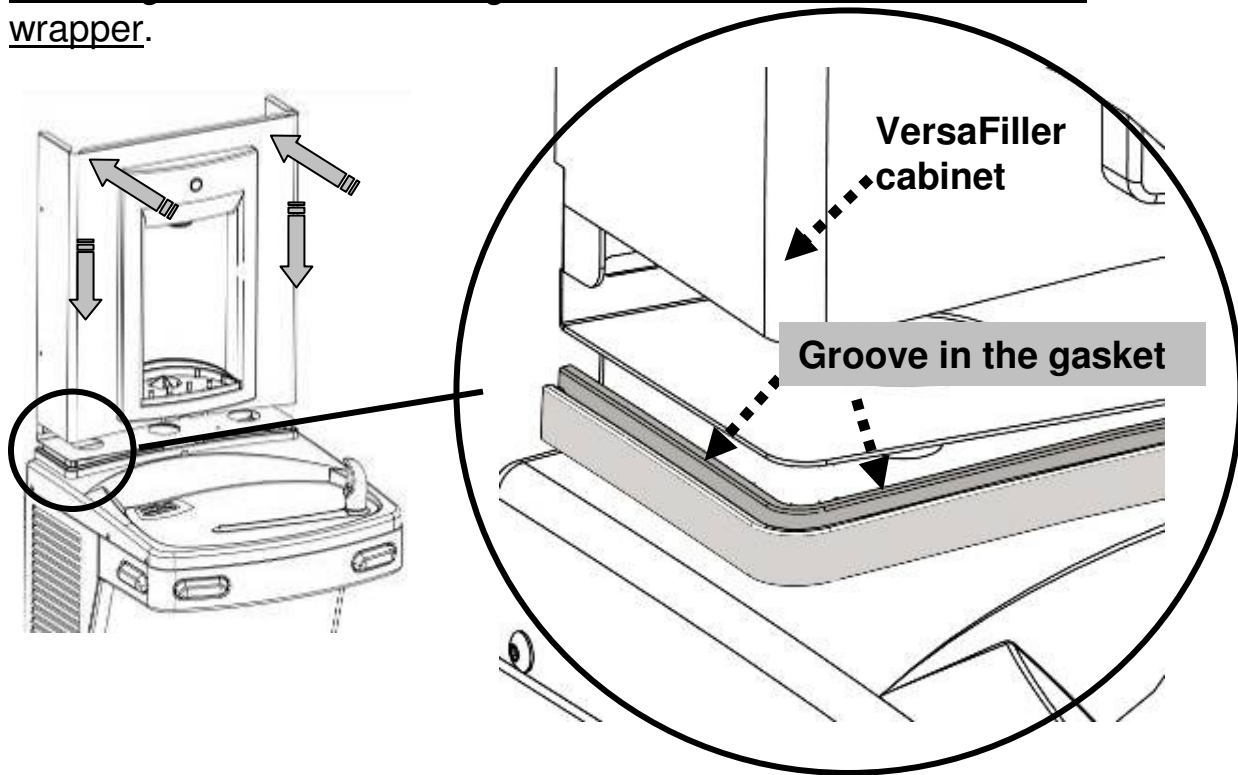
4. Slide sponge tubing insulation over water line. Connect the tubing to the INLET elbow on the back of the VersaFiller assembly.



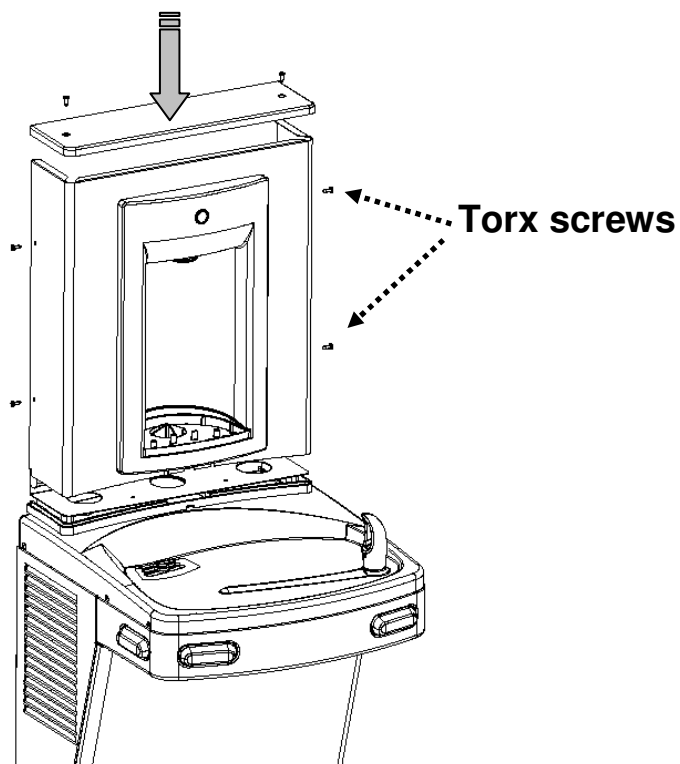


## Section 3: Installation

5. Set the VersaFiller cabinet into place. MAKE SURE the cabinet fits into the *groove* in the rubber gasket on both sides and front of the wrapper.

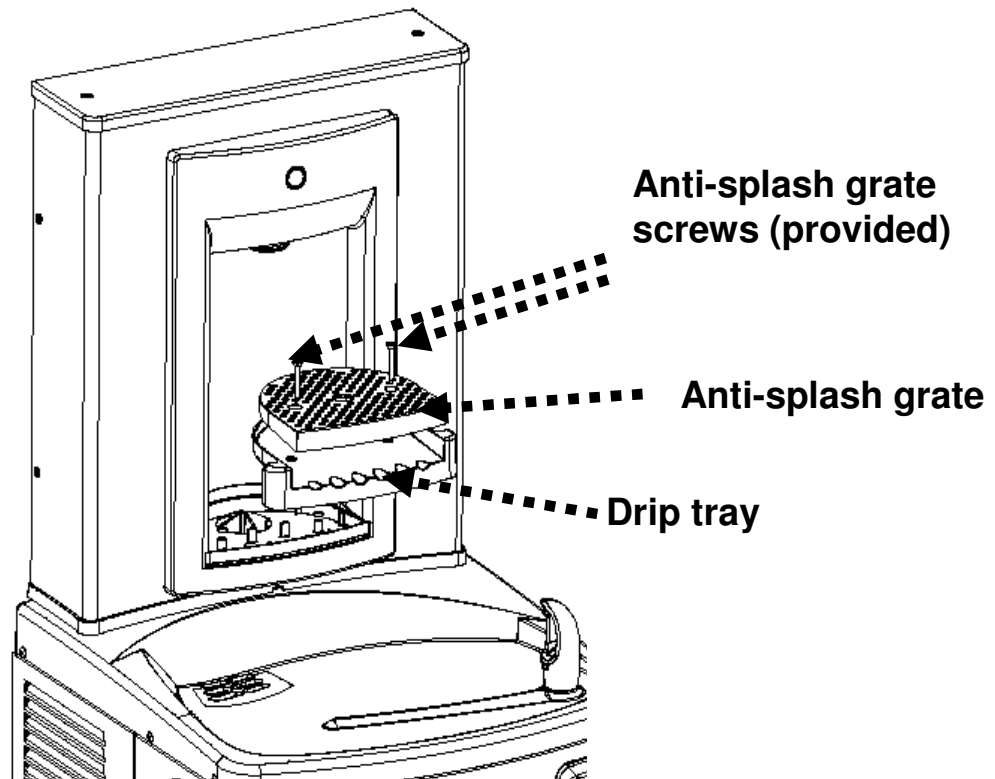


6. Attach VersaFiller assembly and top cap to the frame using the six (6) torx screws.

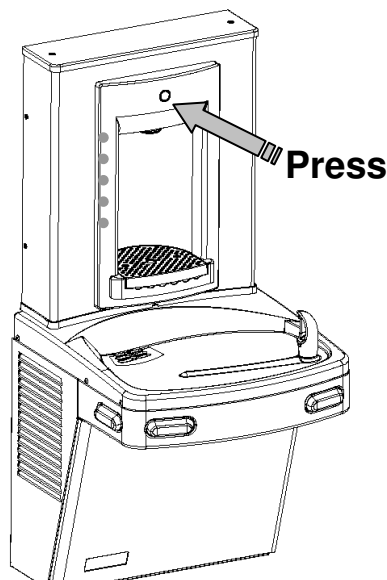


## Section 3: Installation

7. Install the drip tray and anti-splash grate into the alcove area and secure with the two (2) stainless steel phillips head screws.

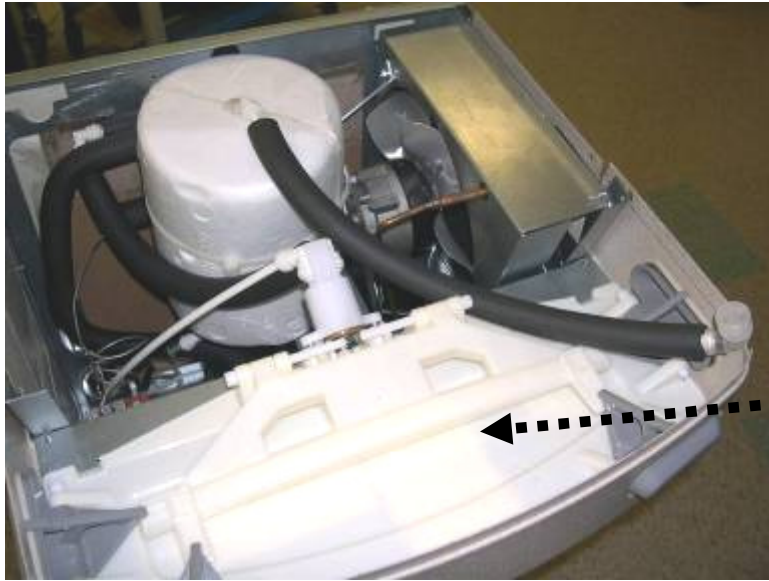


8. Turn ON water supply and check for leaks. Press the activation button and release any trapped air from the system. Plug in the power cord and replace the front panel IF it was removed earlier.



**INSTALLATION COMPLETE**

## Addendum Section: Pressurizing Cooling Tank



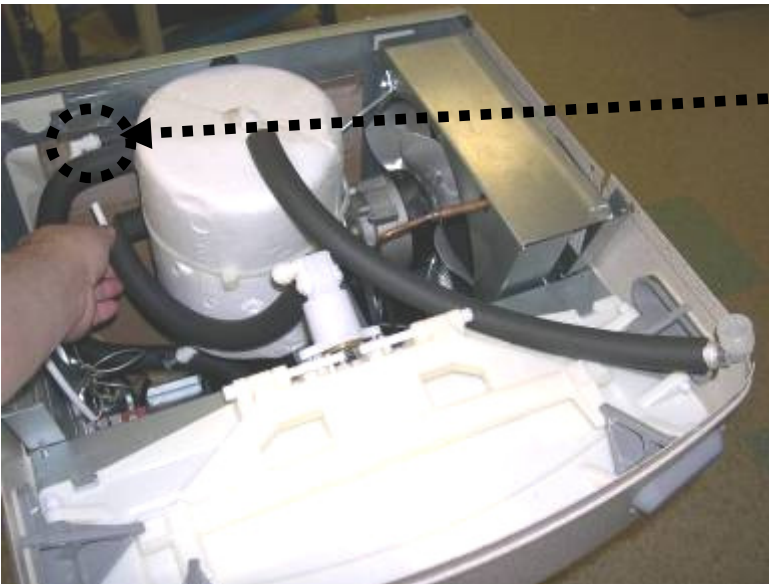
**The water should already be turned OFF and the power disconnected.**

Unit as it appears with top removed



### STEP 1

Unplug un-insulated water line from water valve inlet (JG elbow located left side of water valve facing the front of the cooler). Set tubing aside (careful to not contaminate water contact end).



### STEP 2

Unplug tubing from JG elbow leading to cooling tank inlet.





### **STEP 3**

Plug un-insulated tubing that was removed in step 1 into JG elbow leading to the cooling tank from step 2.



### **STEP 4**

Unplug tubing that is connected to the water valve outlet (JG elbow located on the right side of valve facing the cooler).



### **STEP 5**

Connect tubing from step 4 to JG elbow on the left side of the valve.



### **Step 6**

Unplug JG tubing from the cooling tank outlet. Do not set it down.



### **Step 7**

Using tubing removed in step 6, plug into JG elbow on the right side of the valve. (be sure to rout the tubing under existing tubing installed in step 4 as shown)

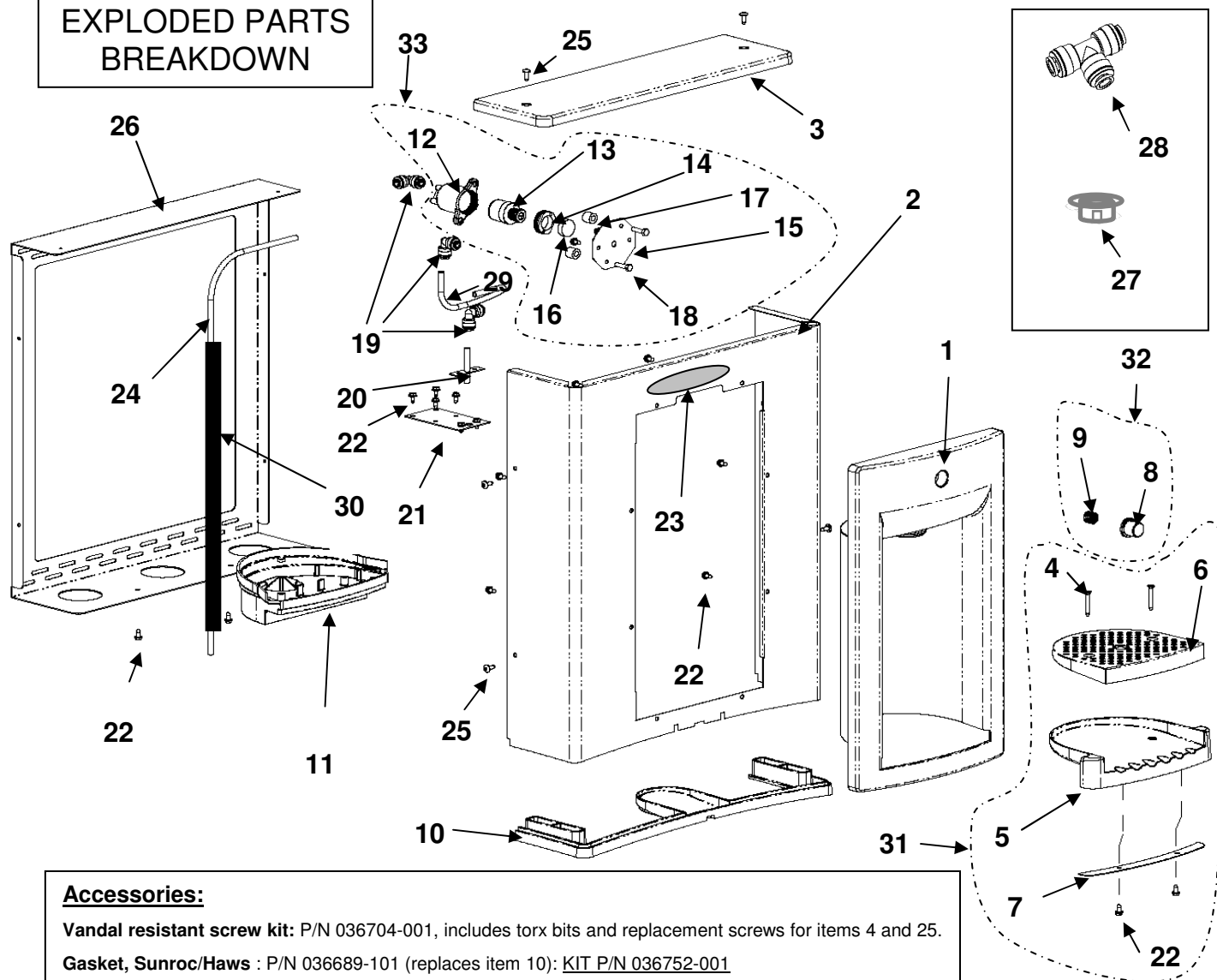


### **Step 8**

Using tubing that is connected to the JG elbow left side of valve (done in step 4), and plug the other end to the JG fitting at the top of the cooling tank.

**Return to Section 3 B**  
**“Connecting the water line”**

## EXPLODED PARTS BREAKDOWN



### Accessories:

**Vandal resistant screw kit:** P/N 036704-001, includes torx bits and replacement screws for items 4 and 25.

**Gasket, Sunroc/Haws :** P/N 036689-101 (replaces item 10): **KIT P/N 036752-001**

**Gasket, Elkay/Halsey Taylor** P/N 036689-201 (replaces item 10 ): **KIT P/N 036752-002**

\*Items highlighted in **GRAY** are available as service parts

1 036190-002	ALCOVE, PWSBF	17 028706-036	WASHER/SPACER/GASKET-NON META
2 036691-001	WRAPPER, PWSBF STN2	18 026670-007	SCREW, HEX HD MACHINE
3 036686-001	CAP, PWSBF	19 028481-101	FTG, PP UNION ELBOW WHT
4 036049-002	SCREW, FLAT HEAD TAPPING	20 036479-001	FILL TUBE ASSY
5 036688-001	TRAY, DRIP PWSBF	21 036209-001	BRACKET, FILL TUBE SUPPORT
6 036695-001	TRAY, GRILLE DRIP	22 026642-003	SCREW, HEX HD TAPPING
7 036697-001	DRIP TRAY BOTTOM CAP	23 031206-005	INSERT, NAMEPLATE AQUAPOINTE
8 036194-002	BUTTON, PWSBF	24 030152-046	TUBE, PE CUT LENGTH WHI
9 034649-001	SPRING, MSBF	25 031875-003	SCREW, BUTTON HD TAPPING
10 036689-001	GASKET, PWSBF	26 036687-001	FRAME, PWSBF
11 036191-002	DRAIN, MSBF, SHORT	27 027189-007	BUSHING, SNAP
12 035990-001	HOLDER, CARTRIDGE STEM CON	28 029199-103	FTG, PP UNION TEE WHITE
13 029967-002	CARTRIDGE	29 030152-031	TUBE, PE CUT LENGTH WHI
14 A020957	NUT, RETAINING PLASTIC	30 017681-008	INSULATION, SPONGE TUBING
15 036690-001	BRACKET, VALVE PWSBF	31 036701-001	DRIP TRAY ASSEMBLY-SERVICE
16 030176-002	PLUG, HOLE	32 036702-001	BUTTON ASSEMBLY, PWSBF-SERVICE
		33 036231-001-SP	VALVE ASSEMBLY, PWSBF DISPENSE-SERVICE

P/N 030099-412 Date: 1/2011 Rev D

© 2011 Oasis International

Oasis, Aqua Pointe, Versacooler and VersaFiller are registered trademarks of LVD Acquisition.

Haws is a registered trademark of HAWS Corporation.

Elkay and Halsey Taylor are registered trademarks owned or licensed by Elkay Sales Inc. and/or its parent Elkay Manufacturing Company



**Oasis International**

222 East Campus View Blvd.

Columbus, OH 43235

614-861-1350

www.oasiscoolers.com