

GALAXY / CRANADA
ROUND FRONT TOILET

☐ **3782-28**

- Vitreous china
- Meets definition for HET (High Efficiency Toilet)
1.28gpf/4.8Lpf
- Meets EPA WaterSense® criteria
- 12" (305mm) rough-in
- Round front siphon action bowl
- Fully glazed 2" Trapway
- Generous 9" x 8" water surface area
- Pilot Valve Water Control
- 2" Flapper flush valve
- Color-matched trip lever
- Sanitary bar on bowl
- 2 color matched bolt caps
- 100% factory flush tested
- 1 Year Limited Warranty



☐ **3352-01** Round Front Universal Bowl

☐ **3742-28** HET 1.28 gpf Tank

Nominal Dimensions:

706 x 492 x 724mm

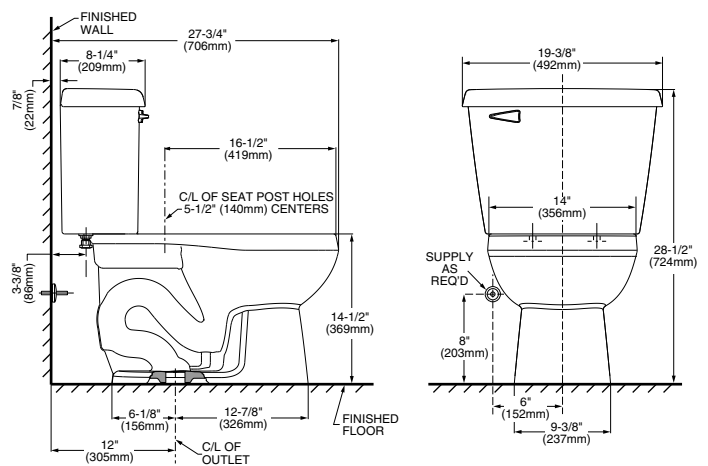
(27-3/4" x 19-3/8" x 28-1/2")

Fixture only, seat and supply sold separately

Compliance Certifications -

Meets or Exceeds the Following Specifications:

- ASME A112.19.2-2008/CSA B45.1-08 for Vitreous China Fixtures
- US EPA WaterSense® Specification for HETs



NOTES:

THIS COMBINATION IS DESIGNED TO ROUGH-IN AT A MINIMUM DIMENSION OF 305MM (12") FROM FINISHED WALL TO C/L OF OUTLET.
* DIMENSION SHOWN FOR LOCATION OF SUPPLY IS SUGGESTED.
SUPPLY NOT INCLUDED WITH FIXTURE AND MUST BE ORDERED SEPARATELY.

IMPORTANT: Dimensions of fixtures are nominal and may vary within the range of tolerance established by ANSI Standard A112.19.2. These measurements are subject to change or cancellation. No responsibility is assumed for use of superseded or voided pages.

To Be Specified:

- ☐ Color: ☐ White
- ☐ Seat:
 - ☐ Lift 'n' Clean™ Round Front Toilet Seat #8085
- ☐ Supply with stop:

