

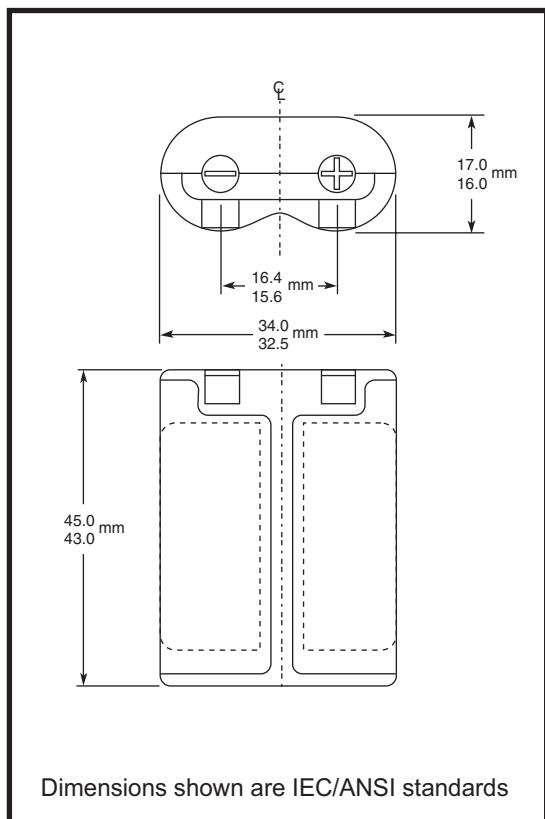
DURACELL

PHOTO ULTRA

Ultra 245

Lithium/Manganese Dioxide

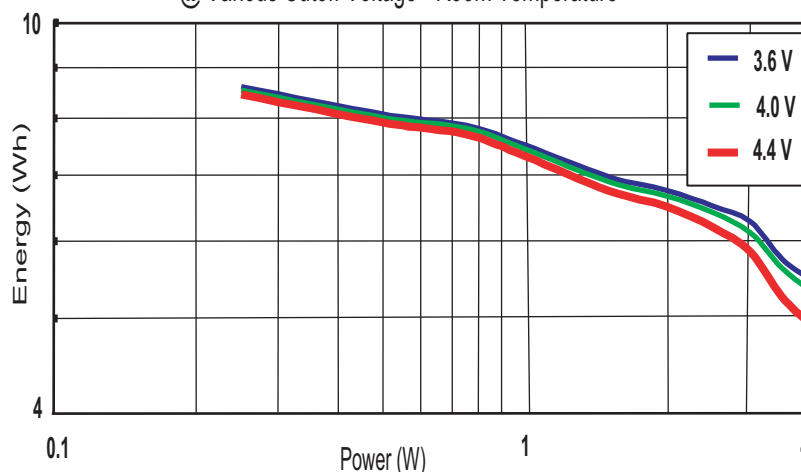
Li/MnO₂



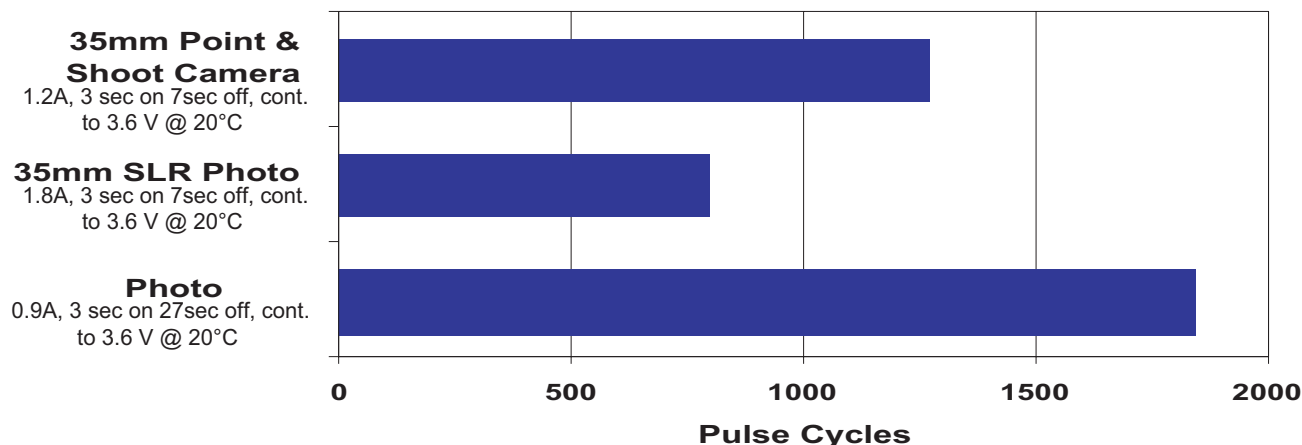
Nominal Voltage:	6 V
Typical Voltage:	6.4-6.6 V
Nominal Internal Impedance:	0.45 ohm @ 1kHz
Average Weight:	38.6 gm
Typical Volume:	24.1 cm ³
Terminals:	Flat, Recessed Contacts Nickel Plated Steel
Operating Temperature Range:	-20°C to 75°C (-4°F to 167°F)
ANSI:	5032LC
IEC:	2CR5

Delivered Energy vs. Power Drain

@ Various Cutoff Voltage - Room Temperature



Duracell Ultra 245 Typical Performance



* Delivered capacity is dependent on the applied load, operating temperature and cut-off voltage. Please refer to the charts and discharge data shown for examples of the energy / service life that the battery will provide for various load conditions.

DURACELL

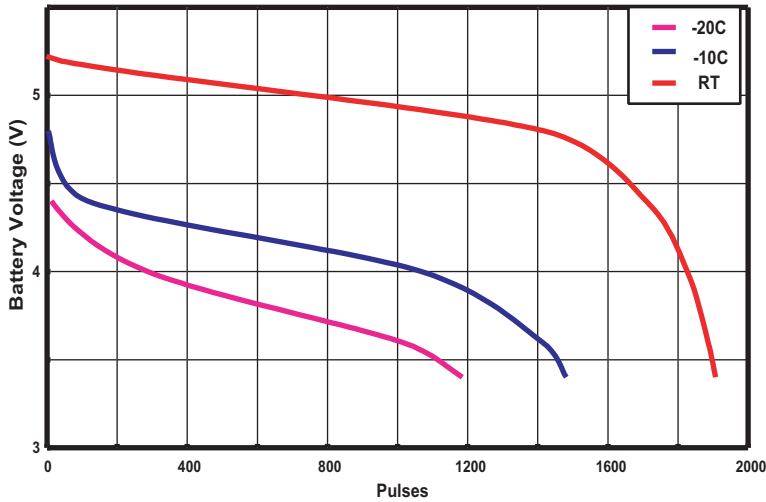
PHOTO

ULTRA

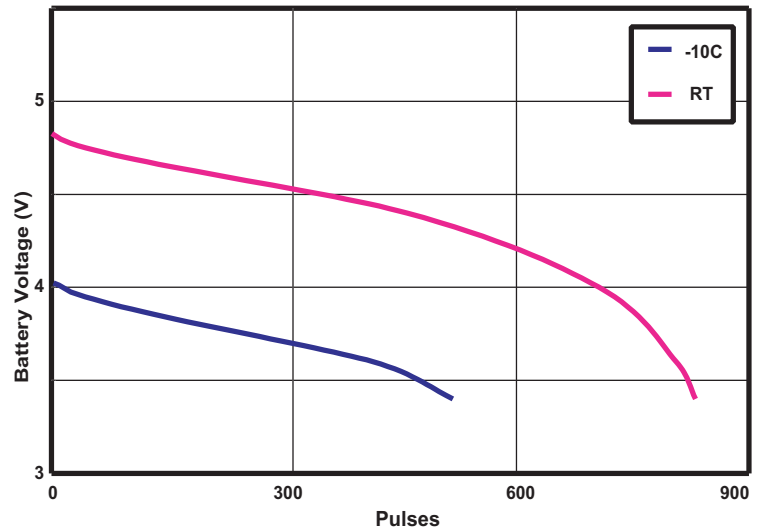
Ultra 245

Li/MnO₂

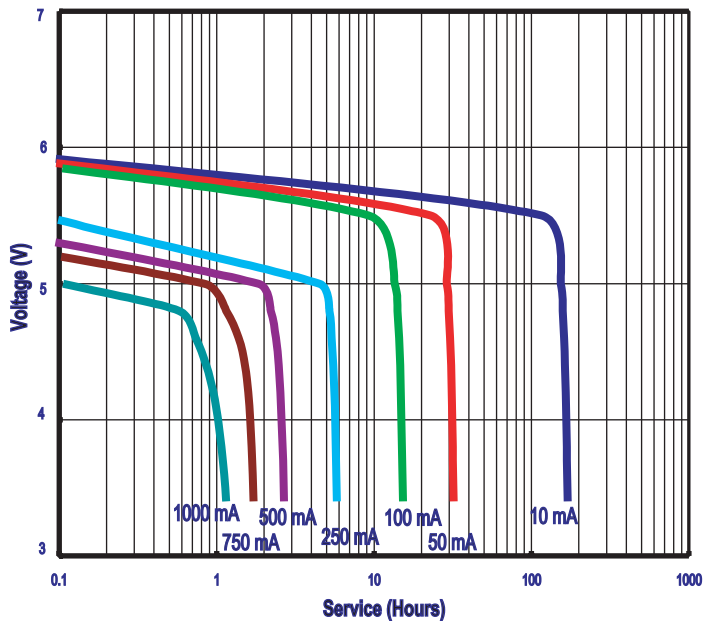
0.9 Amp, 3 sec on/27 sec off
@ Various Temperatures



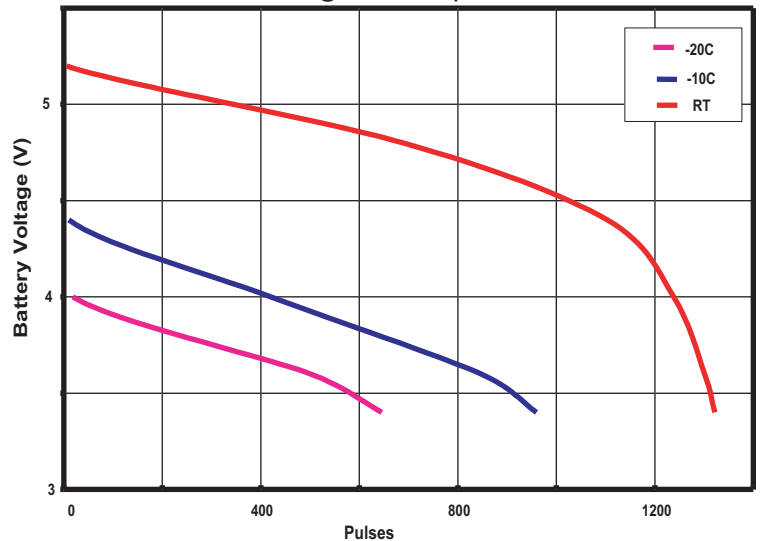
1.8 Amp 3 sec on/ 7 sec off
@ Various Temperatures



Continuous Discharge
RT to 3.4 Volts



1.2 Amp, 3 sec on/ 7 sec off
@ Various Temperatures



DURACELL®

BATTERIES

Berkshire Corporate Park
Bethel, CT 06801 U.S.A.
Telephone: Toll-free 1-800-544-5454
Internet: www.duracell.com

* Delivered capacity is dependent on the applied load, operating temperature and cut-off voltage. Please refer to the charts and discharge data shown for examples of the energy / service life that the battery will provide for various load conditions.