



REVERSOMATIC
MANUFACTURING LIMITED

LT-300-44, LT-300-45

September 1992

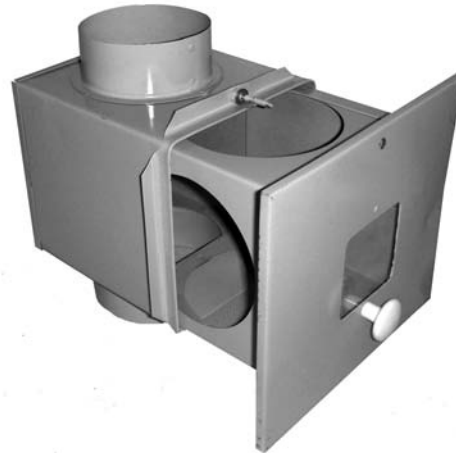
LINT TRAP FOR DRYWALL INSTALLATION CEILING OR WALL MOUNTED

LT-300 lint trap has 4" dia. inlet for dryer connection and 5" dia. outlet for better performance.

Also available in 4" dia. outlet.

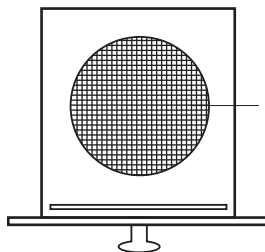
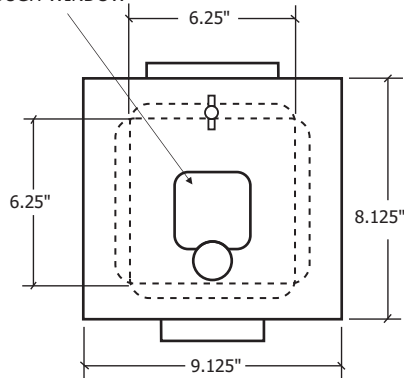
(Specify when ordering)

Removable filter unit secured in position with positive lock.

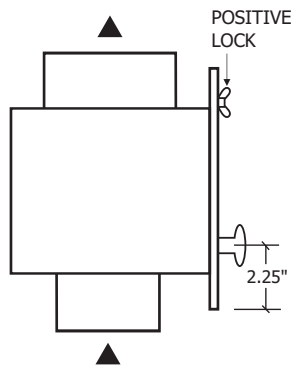


DIMENSIONS:

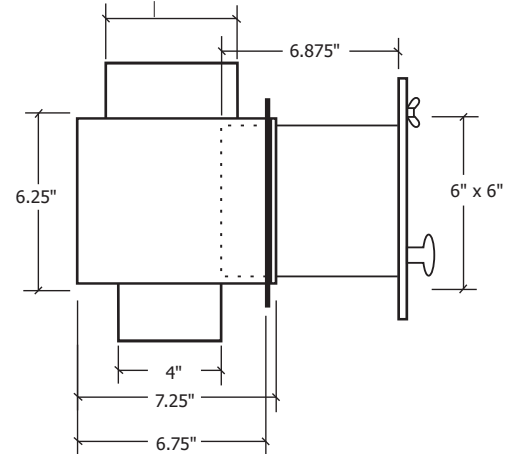
PLEXIGLASS SEE-
TROUGH WINDOW



ALUMINIUM FLY SCREEN
FILTER



4" dia. - model LT-300-44
5" dia. - model LT-300-45



Special sizes are available upon request

Contractor:	LT-300-44, LT-300-45		
Architect:	Date	Supersedes	Drawing No.
Engineer:			

Reversomatic Manufacturing Ltd.

790 Rowntree Dairy Road, Woodbridge, ON Canada L4L 5V3 • Tel: 905-851-6701 • Fax: 905-851-8376
www.reversomatic.com • info@reversomatic.com