



REVERSOMATIC
MANUFACTURING LIMITED

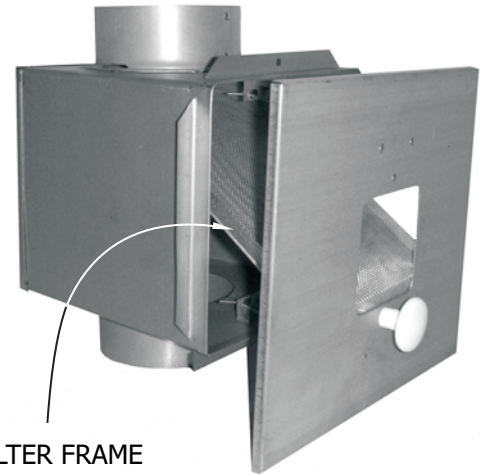
LT-200-44, LT-200-45

March 1989

LINT TRAP FOR DRYWALL INSTALLATION CEILING OR WALL MOUNTED

Model LT-200-45 lint trap has 4" dia. inlet for dryer connection and 5" dia. outlet for better performance.

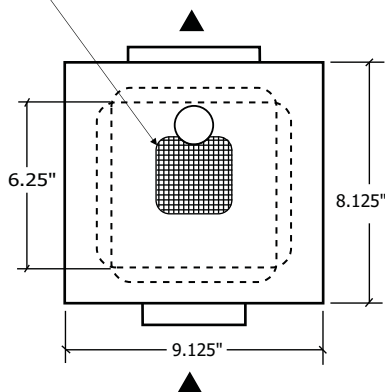
Also available in 4" dia. outlet. (Model LT- 200-44)
Specify when ordering.



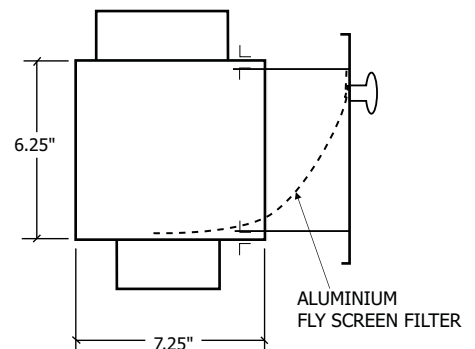
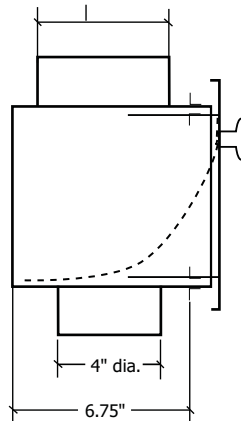
FILTER FRAME
OPTIONAL

DIMENSION:

PLEXIGLASS SEE-
TROUGH WINDOW



4" dia. - model LT-200-44
5" dia. - model LT-200-45



Special sizes are available upon request

Contractor:	LT-200-44, LT-200-45		
Architect:	Date	Supersedes	Drawing No.
Engineer:			

Reversomatic Manufacturing Ltd.

790 Rowntree Dairy Road, Woodbridge, ON Canada L4L 5V3 • Tel: 905-851-6701 • Fax: 905-851-8376
www.reversomatic.com • info@reversomatic.com