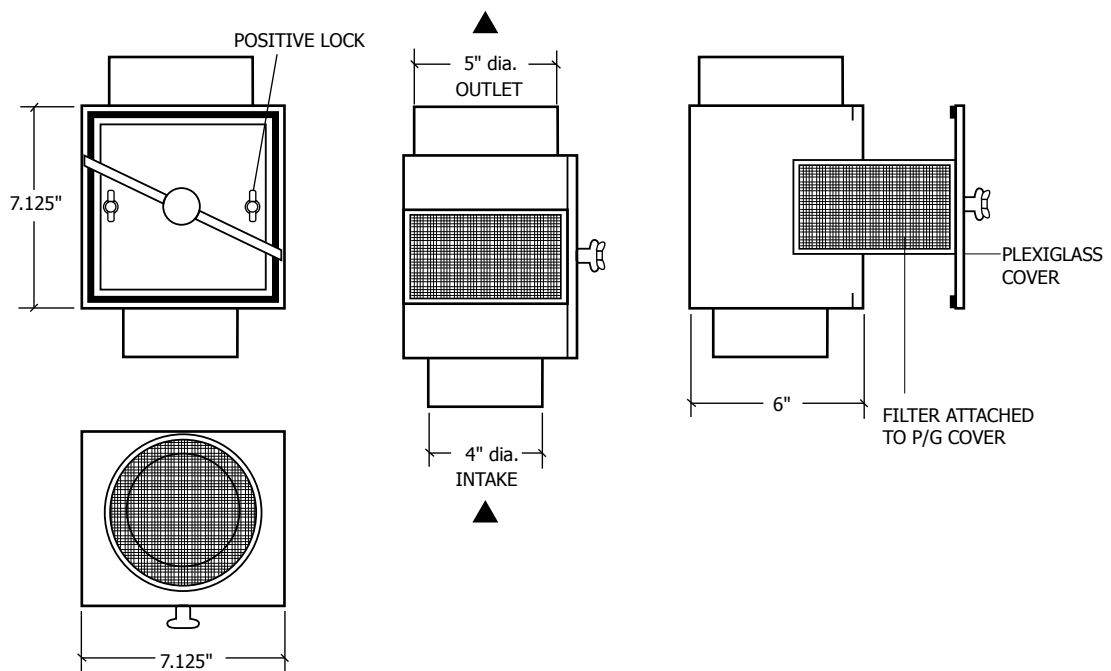
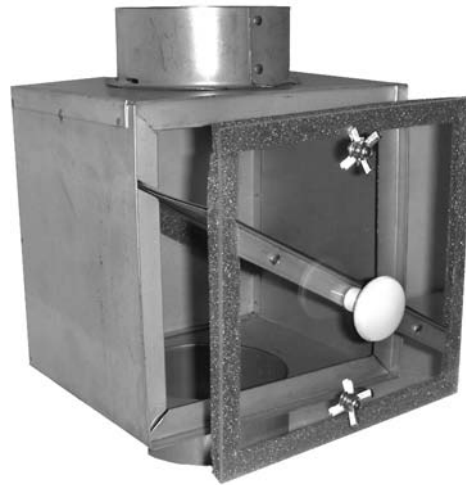




**LINT TRAP
SURFACE OR DRYWALL MOUNTED
WITH NO ROUGH EDGES**

LT-250-45 equipped with filter frame attached to the removable see-through door for easy operation.
It also locks the gasketed door with two latches that makes it totally air tight.



Special sizes are available upon request

| | | | | |
|-------------|-----------------|-----------|------------|-------------|
| Contractor: | | LT-250-45 | | |
| Architect: | Job: | Data | Supersedes | Drawing NO. |
| Engineer: | Date Submitted: | | | |

Reversomatic Manufacturing Ltd.

790 Rowntree Dairy Road, Woodbridge, ON Canada L4L 5V3 • Tel: 905-851-6701 • Fax: 905-851-8376
www.reversomatic.com • info@reversomatic.com