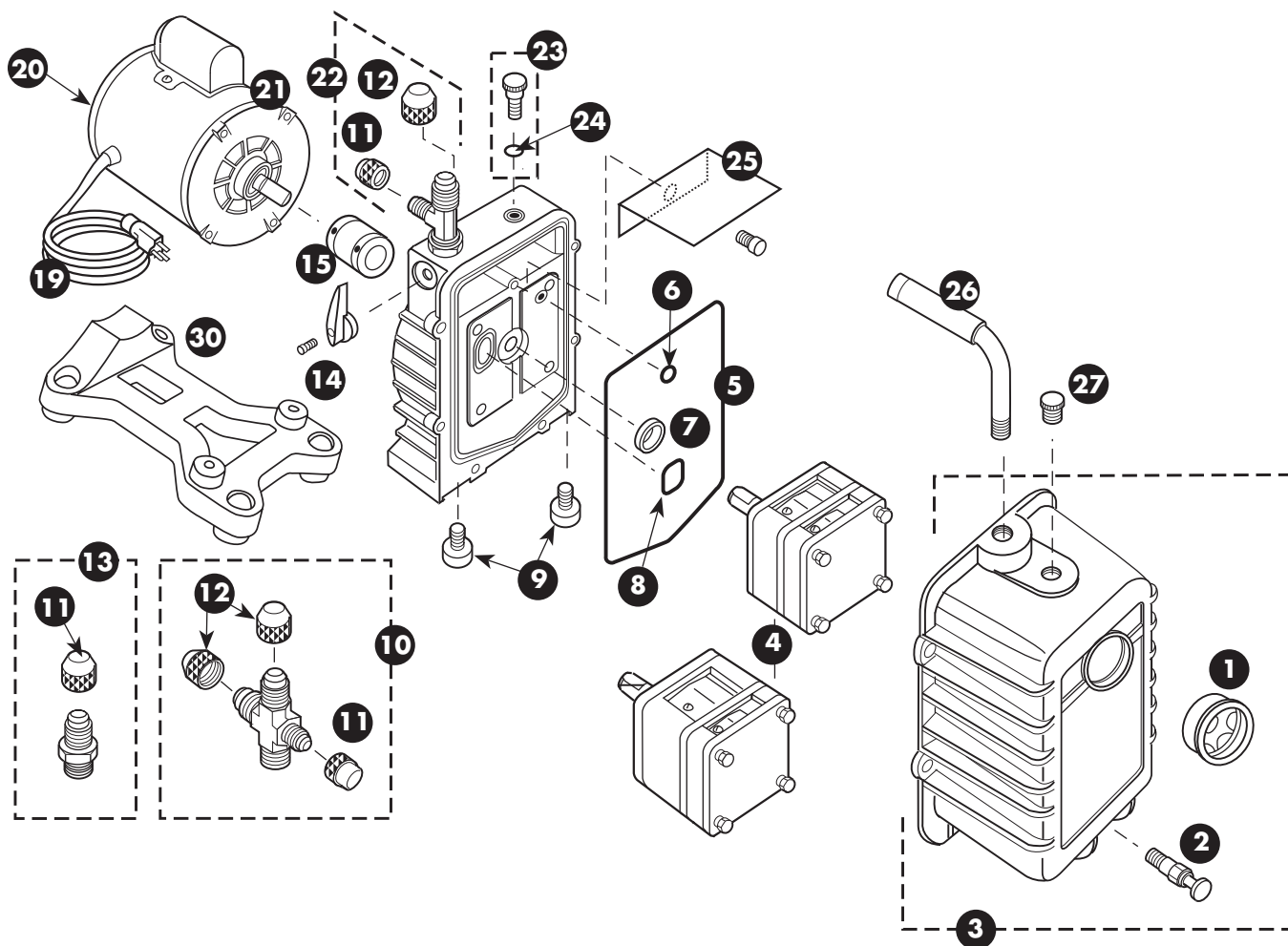


## DV-42N through DV-285N Series



### O-Ring Replacements

Part No.	Description
MR-409	M4 piston (one)
MR-509	1/4" piston (one)
P90009	3/16" and 1/4" QC (five)
P90010	NFT5-4 caps (five)
P90011	NFT5-6 caps (five)
P90012	3/8" QC (five)
P90015	DV-3, DV-5, DV-85C and 3/8" filter (five)
P90018	D10053 and 3/8" piston bonnet (five)
P90019	134a Piston (five)
P90020	134a CLA series hose (five)
P90021	33112 and 33113 (five)
P90022	33112N and 33113N (five)

When ordering, please provide the following information:

**Model number**

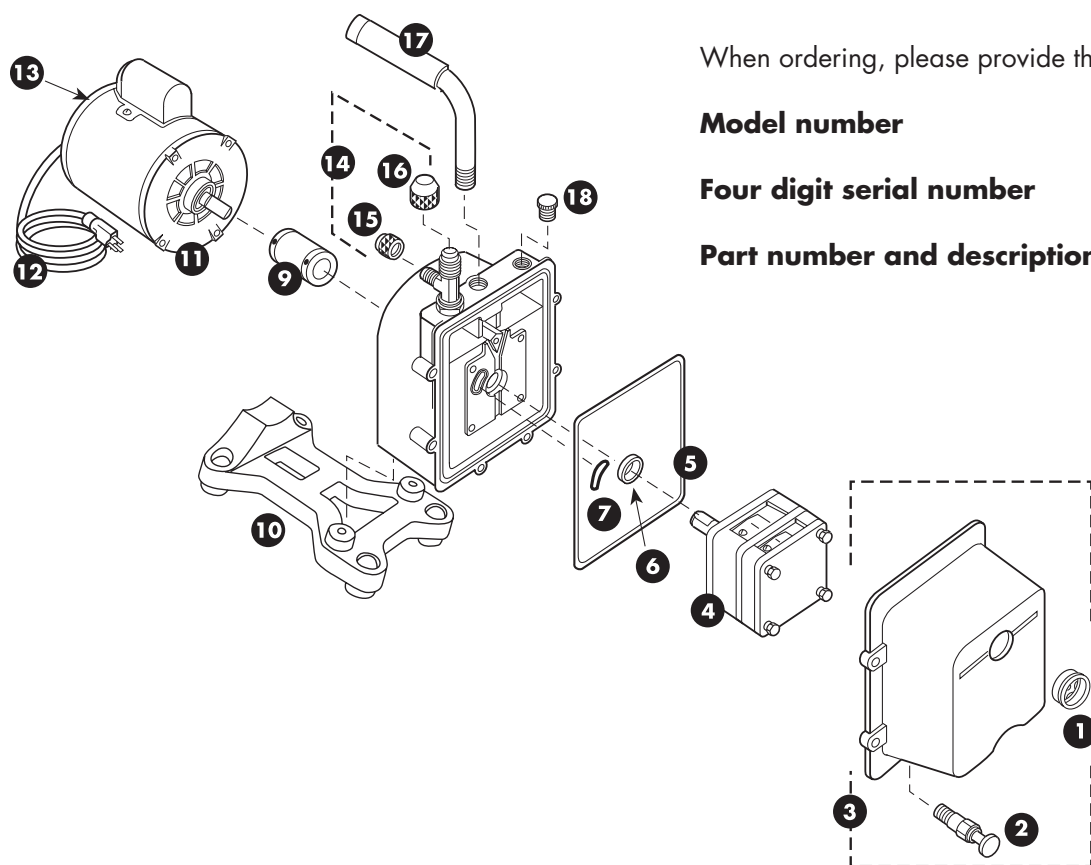
**Four digit serial number**

**Part number and description**

For repair parts for DV-42 and DV-42N series pumps manufactured prior to January 2001 see page 63

**Operating instructions for all pumps manufactured since 1980 available under "Technical Information" at [www.jbind.com](http://www.jbind.com).**

## DV-3E, DV-4E and DV-6E Eliminator™ Series



When ordering, please provide the following information:

**Model number**

**Four digit serial number**

**Part number and description**

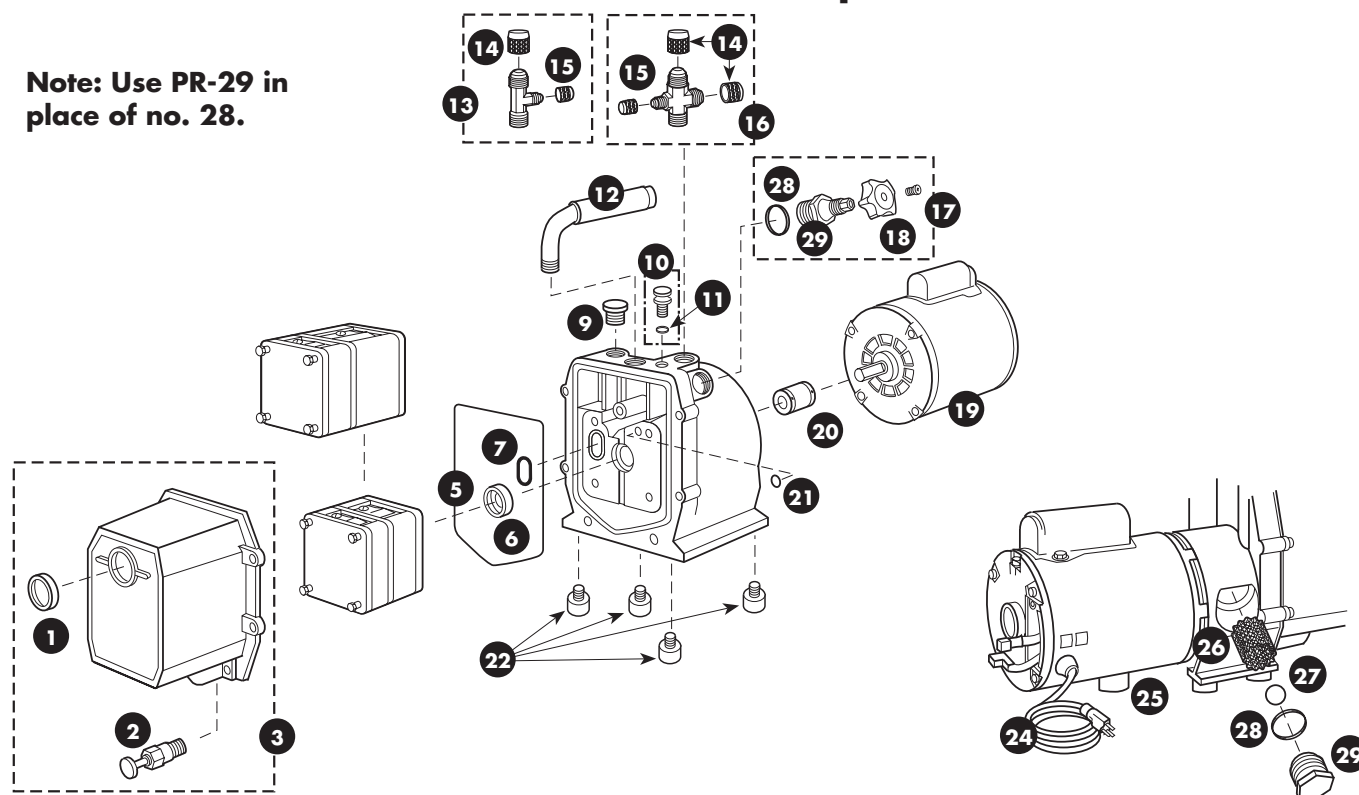
Reference	Part No.	Description
1	PR-1	Sight glass
2	PR-2	Drain valve
3	PR-9	DV-3E Cover assembly includes sight glass and drain valve
3	PR-10	DV-4E and DV-6E Cover assembly includes sight glass and drain valve
4	PR-302	DV-3E Cartridge complete with o-rings and cover seal
4	PR-303	DV-4E Cartridge complete with o-rings and cover seal
4	PR-304	DV-6E Cartridge complete with o-rings and cover seal
5	PR-216	Cover seal
6	PR-3	Shaft seal
7	PR-12	O-ring
8	PR-315	Trap intake o-ring
9	PR-208	Flexible coupler
10	PR-62	Pump base (includes rubber feet)

Reference	Part No.	Description
11	PR-207	1/2 HP, 115/230 V, 50/60 HZ Motor with line cord and switch
11	PR-206	1/2 HP Motor with line cord and switch
12	PR-31	Line cord (Emerson motor)
13	PR-54	Motor switch, rocker
14	PR-63	Intake tee with cap
15	NFT5-4	1/4" O-ring cap
16	NFT5-6	3/8" O-ring cap
17	PR-205	Cushioned handle with 3/8" nipple
18	PR-22	Oil fill plug with o-ring
not shown	PR-18	Cartridge valve repair kit

**Operating instructions for all pumps manufactured since 1980 available under "Technical Information" at [www.jbind.com](http://www.jbind.com).**

## DV-85 and DV-142 Series Vacuum Pumps

**Note: Use PR-29 in place of no. 28.**



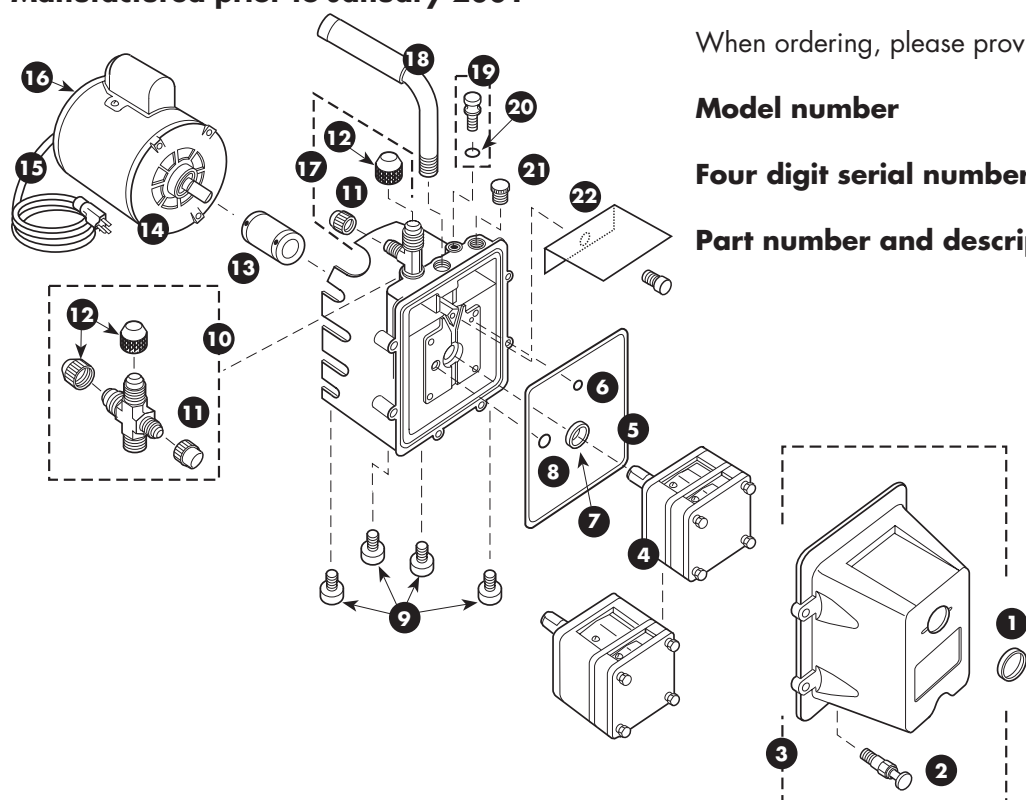
Reference	Part No.	Description
1	PR-1	Sight glass
2	PR-2	Drain valve
3	PR-19	Cover assembly includes sight glass and drain valve
5	PR-311	Cover seal
6	PR-3	Shaft seal
7	PR-315	Trap intake O-ring
8	PR-40	5 CFM splash guard and screw
9	PR-22	Oil fill plug with O-Ring
10	PR-7	Gas ballast without O-Ring
11	P90009	Gas ballast O-Ring
12	PR-205	Cushioned handle
13	PR-5	DV-85 intake tee with caps
14	NFT5-6	3/8" O-Ring cap
15	NFT5-4	1/4" O-Ring cap

Reference	Part No.	Description
16	PR-24	DV-142 intake cross with caps
18	MR-501B	Nylon handwheel
19	PR-206	1/2 HP, 115V, 60 HZ Motor with line cord and switch
19	PR-207	1/2 HP, 115/230 V, 50/60 HZ Motor with line cord and switch
19	PR-307	1/2 HP, 230 V, 50HZ motor with line cord and switch
20	PR-6	Flexible coupler
21	PR-12	Trap gas ballast O-Ring
22	PR-4	Rubber foot and screw assy. (1 per package)
24	PR-31	Line cord
25	PR-42	Motor foot and screw
26	PR-26	Oil filter
27	PR-27	Check ball
28	PR-28	No longer available
29	PR-29	Oil filter plug with O-Ring
not shown	PR-18	Cartridge valve repair kit. All pumps excluding DV-142 (6 digit serial number)

**Operating instructions for all pumps manufactured since 1980 available under "Technical Information" at [www.jbind.com](http://www.jbind.com).**

## DV-3, DV-5 and DV-127 Series Vacuum Pumps

Manufactured prior to January 2001



When ordering, please provide the following information:

**Model number**

**Four digit serial number**

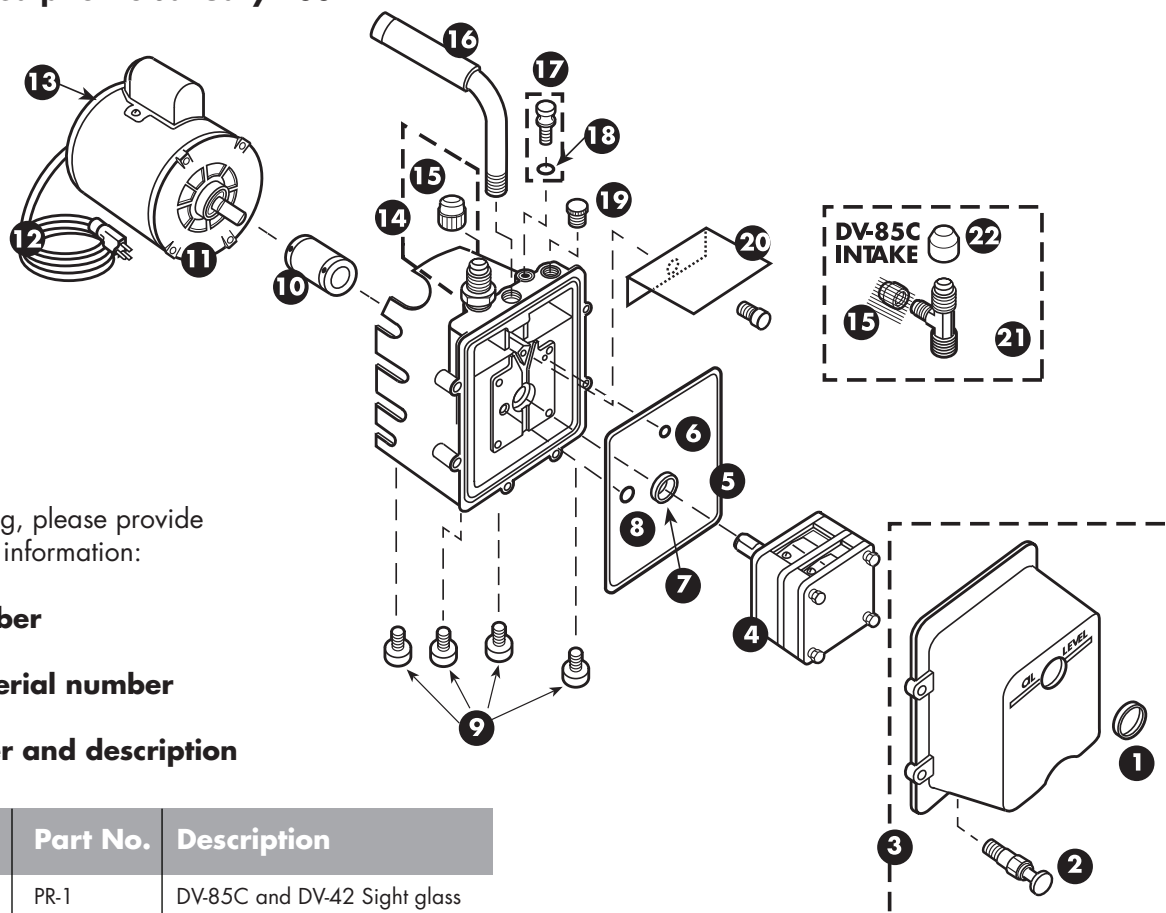
**Part number and description**

Reference	Part No.	Description
1	PR-8	Sight glass
2	PR-2	Drain valve
3	PR-10	Cover assembly includes sight glass and drain valve
4	PR-405	DV-5 and DV-127 Cartridge complete with o-rings and cover seal
5	PR-216	Cover seal
6	PR-12	O-ring
7	PR-3	Shaft seal
8	P90015	O-ring
9	PR-4	Rubber foot and screw assembly (one per package)
10	PR-24	Intake cross with caps
11	NFT5-4	1/4" O-ring
12	NFT5-6	3/8" O-ring
13	PR-6	Flexible coupler
13	PR-53	Flexible coupler (-250 Models after Serial No. 0198)

Reference	Part No.	Description
14	PR-206	1/2 HP, 115 V, 60 HZ Motor with line cord and switch
14	PR-207	1/2 HP, 115/230 V, 50/60 HZ Motor with line cord and switch
14	PR-307	1/2 HP, 230 V, 50HZ motor with line cord and switch
15	PR-31	Line cord (Emerson motor)
16	PR-30	115 V Motor switch, rocker (Marathon motor)
16	PR-54	115/230 V Motor switch, rocker (Emerson motor after Serial No. 0198)
17	PR-5	Intake tee with caps
18	PR-205	Cushioned handle
19	PR-7	Gas Ballast with o-ring assembly
20	P90009	O-ring and gas ballast
21	PR-22	DV-3 and DV-5 Oil fill plug with o-ring
22	PR-39	DV-3 Splash guard with screw
22	PR-40	DV-5 and DV-127 Splash guard with screw
not shown	PR-18	Cartridge valve repair kit

## DV-42, DV-42N and DV-85C Series Vacuum Pumps

Manufactured prior to January 2001



When ordering, please provide the following information:

**Model number**

**Four digit serial number**

**Part number and description**

Reference	Part No.	Description
1	PR-1	DV-85C and DV-42 Sight glass
2	PR-2	Drain valve
3	PR-9	DV-85C and DV-42 Cover assembly includes sight glass and drain valve
3	PR-44	DV-42N Cover assembly includes sight glass and drain valve
4	PR-403	DV-42N Cartridge complete with o-rings and cover seal
5	PR-216	Cover seal
6	PR-12	O-ring
7	PR-3	Shaft Seal
8	P90015	O-ring
9	PR-4	Rubber foot and screw assembly (1 per package)
10	PR-6	Flexible coupler
10	PR-53	Flexible coupler (-250 Models after Serial No. 0198)
11	PR-207	1/2 HP, 115/230V, 50/60 HZ motor with line cord and switch

Reference	Part No.	Description
11	PR-206	1/2 HP Motor with line cord and switch
12	PR-31	Line Cord
13	PR-30	Motor switch- rocker (Marathon motor)
13	PR-54	115/230V Motor switch- rocker (Emerson motor after Serial No. 0198)
14	PR-32	DV-42 Intake with cap
15	NFT5-4	1/4" O-ring cap
16	PR-205	Cushioned handle- 3/8" nipple
17	PR-7	Gas Ballast with o-ring assembly
18	P90009	O-ring and gas ballast
19	PR-22	Oil fill plug with o-ring for newer style DV-42
20	PR-39	DV-42 and DV85C Splash guard and screw
21	PR-5	DV-85C Intake tee with caps
22	NFT5-6	3/8" O-ring cap
not shown	PR-18	Cartridge valve repair kit