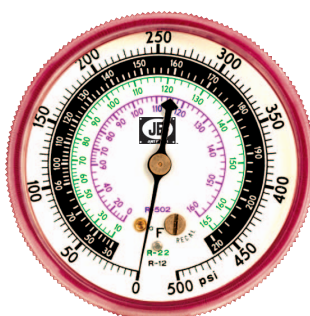
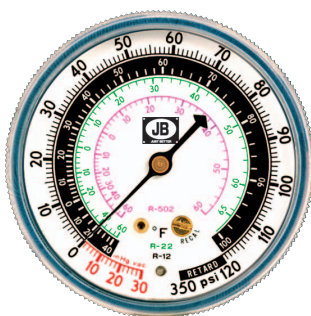


## 2 1/2" Standard

## Gauges



### R-12, R-22 and R-502 Refrigerant Gauges

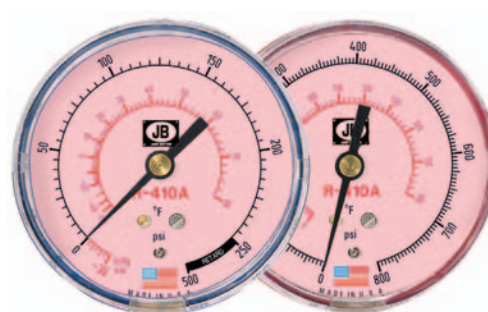
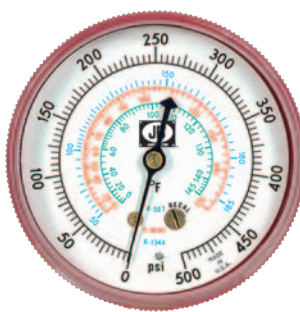
Compound Gauge: 30" vacuum to 120 psi,  
retard to 350 psi

Pressure Gauge: 0 to 500 psi

### R-134a Automotive Gauges

Compound Gauge: 30" vacuum to 120 psi,  
retard to 350 psi

Pressure Gauge: 0 to 500 psi



### R-134a, R-404A and R-507 Refrigerant Gauges

Compound Gauge: 30" vacuum to 120 psi,  
retard to 350 psi

Pressure Gauge: 0 to 500 psi

### R-410A Refrigerant Gauges

Compound Gauge: 30" vacuum to 250 psi,  
retard to 500 psi

Pressure Gauge: 0 to 800 psi

## 2 1/2" (63.5 mm) Gauges

These high quality standard gauges are identical to the gauges used on our manifold sets. They are surge dampened for accuracy. Gauges are sensitive instruments and therefore should not be subjected to pressures beyond scale.



**made in the USA**  
**Recalibration screw**  
**for easy adjustment**

**Full size brass**  
**movements**

**1/8" MPT brass**  
**connection**

**All steel cases on**  
**standard gauges**

**High Impact clear**  
**view Lexan lens for**  
**visibility and**  
**durability**

Refrigerants	Compound steel case	Pressure steel case	Compound steel case Liquid filled	Pressure steel case Liquid filled	Compound brass case	Pressure brass case
R-12, R-22 and R-502	M2-250	M2-500	M2-870	M2-875	M2-250B	M2-500B
R-22, R-134A, and R-404A	M2-430	M2-435	M2-880	M2-885	_____	_____
R-22, R-404, and R-410A	M2-460	M2-465	M2-890	M2-895	_____	_____
R-134a, R-404A, and R-507	M2-420	M2-425	_____	_____	_____	_____
R-134a	M2-350	M2-355	_____	_____	_____	_____
R-410A	M2-410	M2-415	_____	_____	_____	_____

**For manifold replacement parts, please refer to "Repair Parts" section beginning on page 60.**

For safety reasons, gauges and hoses not specified for R-410A can damage product and cause injury.

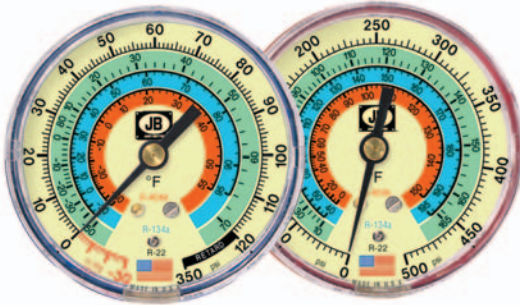
# Gauges

## 3 1/8" Standard Illuminated

### Exclusive Illuminated Gauges

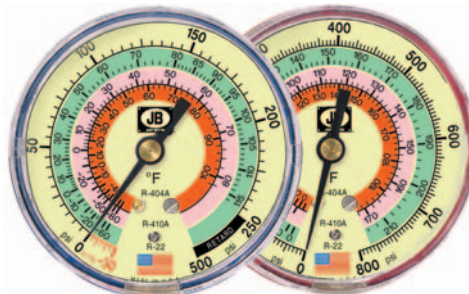
JB offers an EXCLUSIVE 3- 1/8" (80 mm) Illuminated gauge. The glow-in-the-dark dials store energy to emit light in dimly lit or dark applications. This exclusive feature is only available on the large size gauge, and only available from JB.

Refrigerants	Compound steel case Glow in the dark	Pressure steel case Glow in the dark
R-12, R-22 and R-502	M2-800	M2-805
R-22, R-134a, and R-404A	M2-851	M2-856
R-22, R-404, and R-410A	M2-820	M2-825
R-410A	M2-810	M2-815



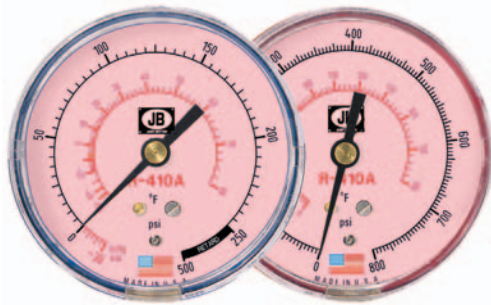
#### R-22, R-134a, and R-404A Refrigerant Gauges

Compound Gauge: 30" vacuum to 120 psi, retard to 350 psi  
Pressure Gauge: 0 to 500 psi



#### R-22, R-404A, and R-410A Refrigerant Gauges

Compound Gauge: 30" vacuum to 250 psi, retard to 500 psi  
Pressure Gauge: 0 to 800 psi



#### 3-1/8" (80 mm) R-410A Refrigerant Gauges

Compound Gauge: 30" vacuum to 250 psi, retard to 500 psi  
Pressure Gauge: 0 to 800 psi

### Controls Pump

The controls pump is used in conjunction with a gauge manifold to quickly and accurately test and set single or dual pressure controls to 350 psi and 25 inches of vacuum.

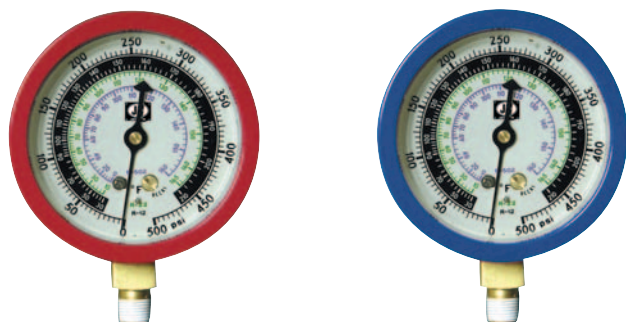
Part No.	Description
40200	Controls pump with 40201



### Replacement parts

Part No.	Description
40201	Adapter without O-Ring
40202	Adapter with O-Ring
40203	Pressure access valve with 35 psi core
40204	Piston O-Ring
40205	Pressure valve core 35 psi
40206	Vacuum valve core 3 psi
40207	Vacuum access valve with 3 psi core

## Liquid Filled Gauges



### 2 1/2" (63.5 mm) Liquid Filled Compound Gauges

These 2 1/2" (63.5 mm) American Made liquid filled gauges are the toughest in the industry and are backed by an extended warranty. These gauges feature high impact Lexan lenses for better durability and visibility.

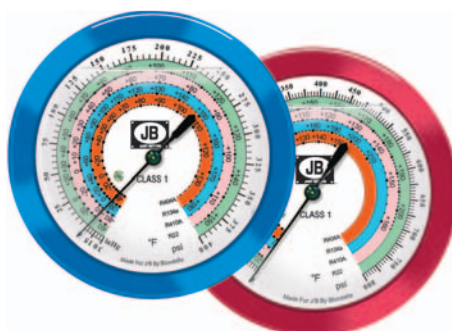
Refrigerants	Compound liquid filled	Pressure liquid filled
R-12, R-22 and R-502	M2-870	M2-875
R-22, R-134a, and R-404A	M2-880	M2-885
R-22, R-404A, and R-410A	M2-890	M2-895

### 2 1/2" (63.5 mm) Liquid Filled Pressure Gauges

Part No.	Range	Part No.	Range	Part No.	Range
29950	0-15 psi	29954	0-200 psi	29958	30 - 0 - 30 psi
29951	0-30 psi	29955	0-300 psi	29959	30 - 0 - 60 psi
29952	0-60 psi	29956	0-400 psi	29960	30 - 0 - 150 psi
29953	0-160 psi	29957	0-30 inHG		

### 3 1/8" (80 mm) Liquid Filled Gauges

Made with European Craftsmanship and quality standards, these Class 1 gauges are +/- 1% accuracy. These liquid filled gauges are offered with an exclusive four refrigerant combination dial.



Refrigerants	Compound liquid filled	Pressure liquid filled
R-22, R-134a, R-404A and R-410A	M2-860	M2-865

## Gauges



Internal "breathing diaphragm" eliminates air bubbles which can distort the reading rendering calibration unnecessary

Internal diaphragm seal prevents freezing and corrosion

Highly accurate; within 1%

Temperature compensated for changes in case pressure for accuracy

Tough, impact resistant Zytel casing with over 10,000 lb tensile strength

1/8" MPT fitting on bottom for convenience

Class 1 accuracy

Exclusive four refrigerant combination dial for most applications

No leak system prevents unwanted Glycerin leaks

Heavy duty case to withstand daily use

Re-calibration screw for convenience