

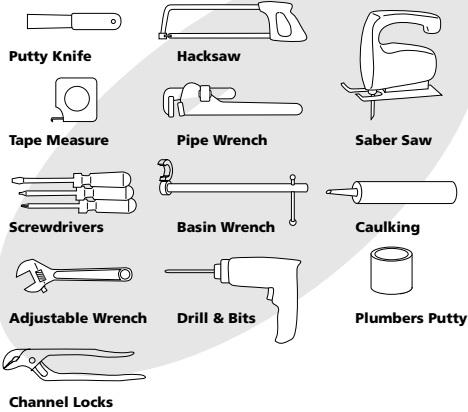
# Installation Instructions for CRANE Drop-In Lavatory

**CRANE**

Thank you for purchasing Crane Plumbing products. To ensure that your installation project goes smoothly, please review these instructions before proceeding.

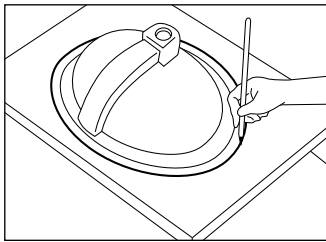
## RECOMMENDED TOOLS & MATERIALS

(not supplied)

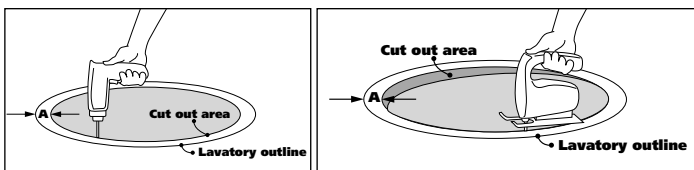


## INSTALLATION

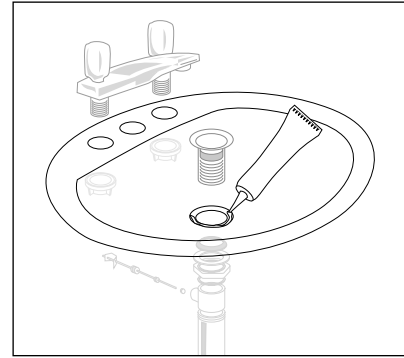
- 1 When replacing an existing lavatory, make certain to turn off water supply before proceeding. For a new installation, a cutout will need to be determined from the position of the lavatory on the countertop. Remember to provide proper clearance under the counter and lavatory for faucet supply lines, drain assembly and mechanical needs of the cabinet. Outline using a carpenter's pencil or other marking device the shape of the lavatory on the underside of the countertop.



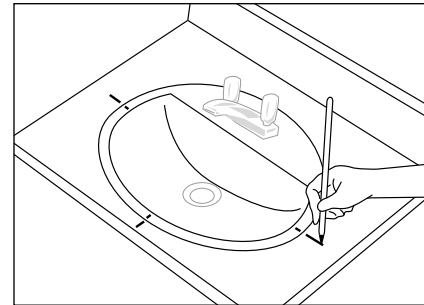
- 2 Using a drill create a clearance hole 1/2" ("A" on illustration) inside the outline of the lavatory on the countertop. Using a saber saw cut an opening 1/2" ("A" on illustration) inside the outline of the lavatory starting at the clearance hole.



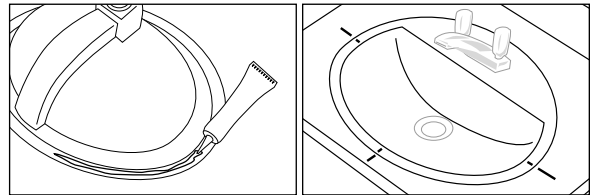
- 3 Install the faucet and drain units (not included) onto the lavatory following manufacturers installation instructions. Apply a bead of sealant to the drain where it meets the lavatory to create a water tight seal. Remove any excess sealant.



- 4 Place the lavatory into the opening in the countertop to check for position, clearance, alignment and fit. Mark the lavatory and countertop with grease pencil to identify the correct position.



- 5 Place sealant on the underside of the lavatory and replace the unit into the cutout area of the countertop carefully aligning with marks made in step 4. Allow sealant to harden.



- 6 Install supply lines (not included) and trap to drain assembly (not included) as per manufacturers instructions.

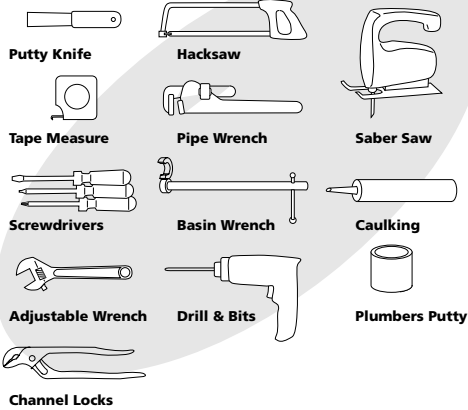
# Installation Instructions for CRANE Undercounter Lavatory

**CRANE**

Thank you for purchasing Crane Plumbing products. To ensure that your installation project goes smoothly, please review these instructions before proceeding.

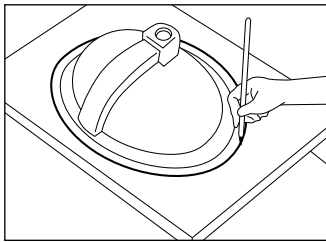
## RECOMMENDED TOOLS & MATERIALS

(not supplied)

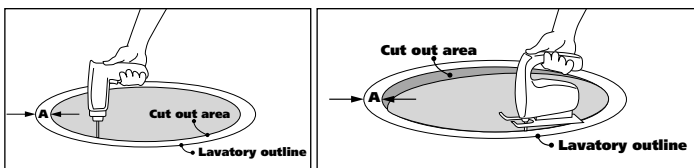


## INSTALLATION

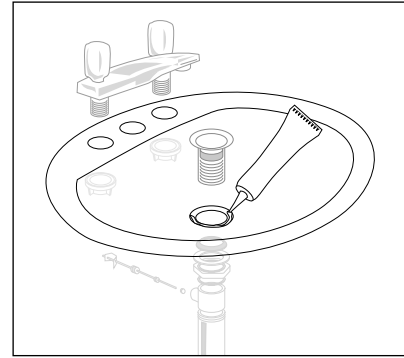
- 1 When replacing an existing lavatory, make certain to turn off water supply before proceeding. For a new installation, a cutout will need to be determined from the position of the lavatory on the countertop. Remember to provide proper clearance under the counter and lavatory for faucet supply lines, drain assembly and mechanical needs of the cabinet. Outline using a carpenter's pencil or other marking device the shape of the lavatory on the underside of the countertop.



- 2 Using a saber saw cut an opening 1-1/2" ("A" on illustration) inside the outline of the lavatory.



- 3 On the bottom of the countertop, mark the holes that will be necessary for the mounting hardware 1-7/8" from the cutout edge.
- 4 Depending on the material that your countertop is manufactured with, you'll need to install the mounting hardware differently (see fig. 4).
- 5 Mount drain assembly (not included) following manufacturers instructions. Apply a bead of sealant around the drain where it meets the lavatory to create a watertight seal. Remove excess sealant.



- 6 Add a bead of silicone adhesive to rim of lavatory after checking fit and position within the open area of the countertop.
- 7 Tighten screws when lavatory is centered over the cut out. Secure bowl and remove excess sealant from around the lip.
- 8 Install faucet (not included), countertop (not included), supply lines (not included) and trap to drain assembly (not included) as per manufacturers instructions.

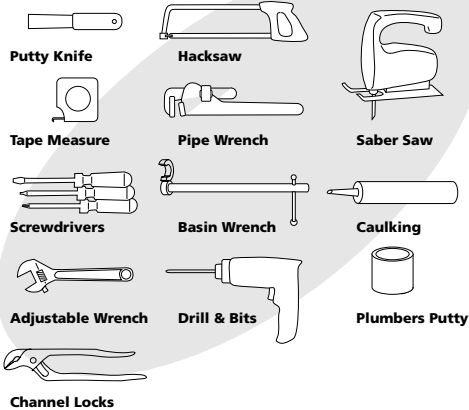
# Installation Instructions for CRANE Wall-Hung Lavatory

**CRANE**

Thank you for purchasing Crane Plumbing products. To ensure that your installation project goes smoothly, please review these instructions before proceeding.

## RECOMMENDED TOOLS & MATERIALS

(not supplied)



**7** Connect trap to drain assembly as per manufacturers instructions. Connect supply lines (not included) to faucet. Apply a bead of caulk to the lavatory where it meets the wall.

## INSTALLATION

- 1** When replacing an existing lavatory, make certain to turn off water supply before proceeding. Determine the need for reinforcement behind finished wall for lavatory hanger mounting screws. Horizontal center line location of support is shown for each model in fig. 2 below. Support should be flat to wall behind.
- 2** Rim height determines hanger mounting bolt centerline position. From fig. 2 you will be able to determine the proper distance vertically from the floor your hanger mounting bolts will need to be installed.
- 3** Position hanger according to your specific products needs. Make sure that the hanger mount is centered with the waste hole centerline. Mark the hanger screw locations through the hanger mount screw holes.
- 4** Drill holes for screws  
(note: some models are equipped with anchor screws or steel hangers. Lavatories with bottom anchor screw holes should be secured with both anchor screws as well as hangers)
- 5** Attach hanger to wall (hand tighten). Mount lavatory for position. Level the top and mark the bottom anchor screw holes (if applicable). Remove lavatory and tighten the hanger screws and drill pilot holes for anchor screws.
- 6** Install faucet (not included), drain assembly (not included). Apply a bead of sealant to the area where the drain meets the lavatory. Remove any excess sealant once drain is installed.

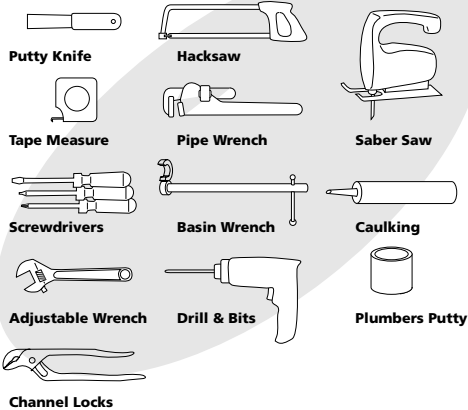
# Installation Instructions for CRANE Pedestal Lavatory

**CRANE**

Thank you for purchasing Crane Plumbing products. To ensure that your installation project goes smoothly, please review these instructions before proceeding.

## RECOMMENDED TOOLS & MATERIALS

(not supplied)



**7** Level and square unit and secure lavatory to wall as shown in fig. 5-1 or 5-2. Before completeing the supply line fittings install (not included) level and square the unit.

**8** Install pedestal screws and securely tighten lavatory anchor nuts or lag bolts. Available space may determine the method of attaching the pedestal to the floor.

## INSTALLATION

**1** When replacing an existing lavatory, make certain to turn off water supply before proceeding. Determine the need for reinforcement behind finished wall for lavatory anchor screws. Determine horizontal center line location of support from pedestal lavatory.

**2** Pedestal lavatory should be placed against the wall where the installation is to occur. Level the lavatory on the pedestal. Use as many bumper cushions (supplied) to level the lavatory to the pedestal stand.

**3** Mark lavatory and pedestal screw locations on the wall through the mounting holes. If a steel hanger is provided, mark the location of its screws when positioned as shown in fig. 5-2

**4** Remove lavatory and pedestal from install position. Drill pilot holes for lavatory and pedestal anchor screws or lag bolts.

**5** **-1 Anchor Screw install.** Install anchor screws leaving 1-7/8" threaded and exposed as shown in fig 5-1.

**5** **-2 Lag Bolt install.** Use lag bolts to secure lavatory as shown in fig 5-2.

**6** Install faucet (not included), drain assembly (not included) and trap to drain assembly (not included) as per manufacturers instructions. When installing drain to lavatory basin, apply a bead of sealant to ensure water tight seal. Remove any excess sealant when complete.