



Non-CFC foam insulation.
Vitrilas @ lined tank
Factory installed Hydrojet @
Sediment Reduction System
Flue damper

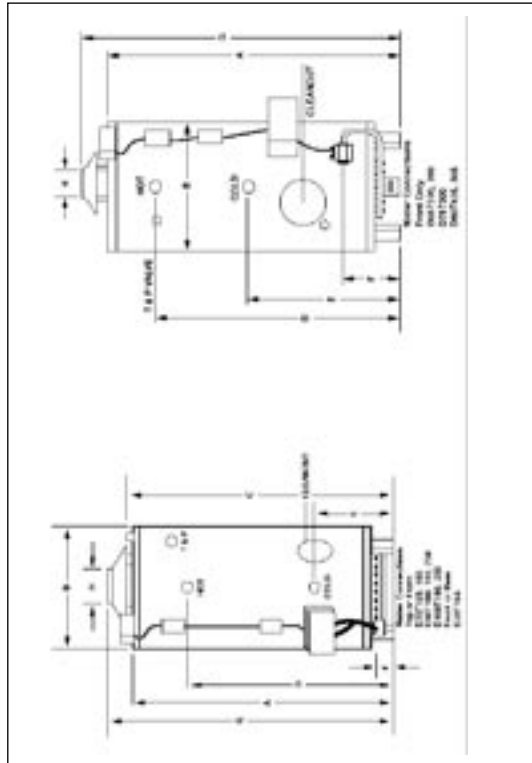
Electronic ignition—electronic ignition eliminates the constant burning pilot on other commercial water heaters. This device results in savings of pilot gas used during stand-by periods. (115V AC required to heater).
Ignition system operates off of 24 volts.
Magnesium anode rods
Hand hole cleanout
Controls

Brass drain valve.
T&P relief valve installed.
ASME code available on all models above 200,000 BTUH (58.6KW).
Three year limited warranty - See complete copy of the warranty included with the water heater.
One year limited parts warranty - (exclusive of shipping and reinstallation costs.)
Design certified by CSA International (formerly AGA/CGA)

These tanks are not stocked at all locations.

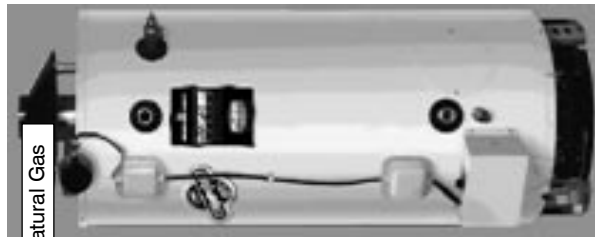


Due to weight and cube, all hot water tanks delivered by our trucks or contract carriers will have handling fees applied.

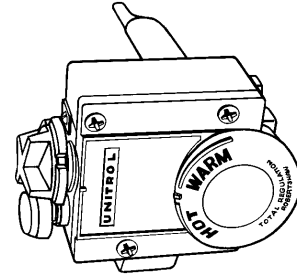
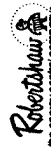


COMMERCIAL ENERGY SAVER GAS ELECTRONIC IGNITION

PART#	SIZE		BTU INPUT	RECOVERY (gph)			A in.	B in.	C in.	D in.	E in.	F in.	G in.	H in.	Weight lbs/kg
	U.S.	LITRES		40F	100F	140F									
D-75T-125-3N	75	284	125,000	303	121	86	65	28-1/4	67-1/8	54-1/2	34	4-3/4	72-1/4	5	520/236
D-80T-199-3N	80	303	199,999	485	194	139	64-1/2	28-1/4	66-1/4	56	19-1/2	4-3/4	72-3/8	6	540/245
D-80T-250-3N	80	303	250,000	606	242	173	64-1/2	28-1/4	66-1/4	56	19-1/2	4-3/4	72-3/8	6	540/245
D-100T-250-3N	98	371	250,000	606	242	173	75-1/2	28-1/4	77-1/4	67	19-1/2	4-3/4	83-3/8	6	610/277
D-65T-370-3N	65	246	370,000	897	359	256	64-1/2	28-1/4	54-1/4	29	10-1/2	73-3/8	8	665/302	
D-80T-425-3N	80	303	425,000	1030	412	294	75-1/2	28-1/4	64-1/4	29	10-1/2	82-3/4	10	750/340	



Dimensions



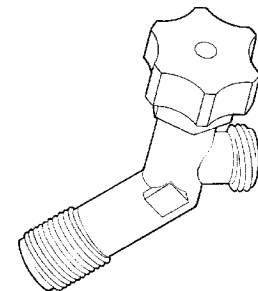
110-C309 Natural Gas
110-C319 Propane

Water Heating Thermostat UNI-KITS. The 110 series water heater thermostat Uni-Kit is designed for Universal replacement applications. Some models feature a built in, non cycling Energy Cut-Off (ECO) system to shut off all gas to the heater in case of excessive water temperatures. All models have a 5 1/2" sensing element and vary by inlet and outlet size, shank length, high temperature stop, and regulator type and setting. If the thermostat you are requiring is different from the model illustrated give one of our branches listed below a call with your model's description.



ULN1477
For J.H. Woods, Water Heater plastic drain valve O.E.M. quality

Giant Factories Inc.



18G0020
Master Flow Drain Valve Plastic

Part# Size
ULN1483 3/4" M X 42"
ULN1484 3/4" M X 54"
Drop tube plastic

